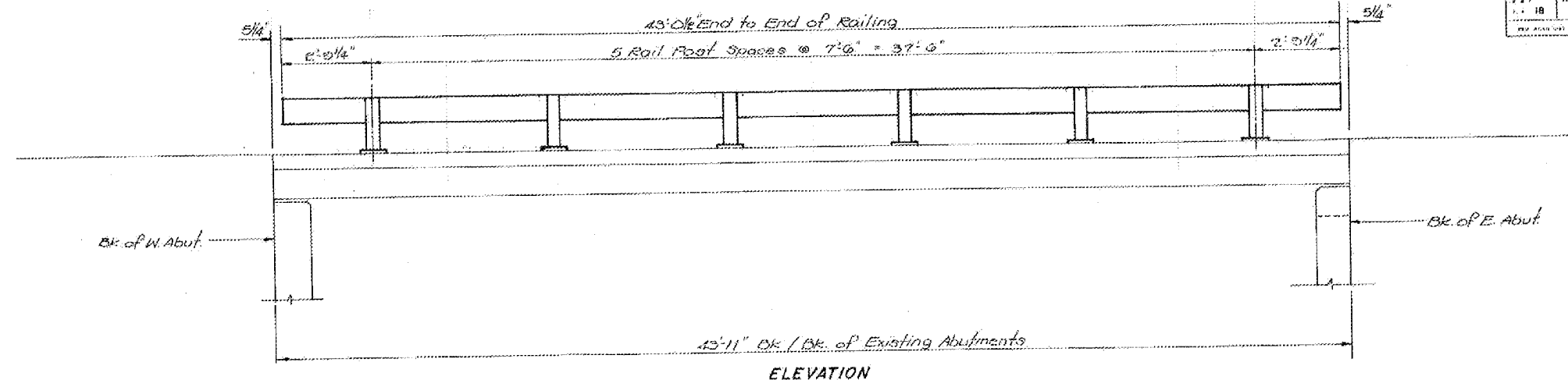
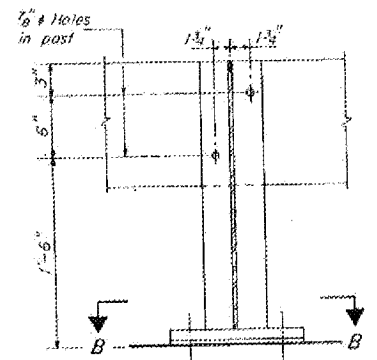


ROUTE NO.	SECTION	DESIGNED BY	CHECKED BY	DATE
18	104 BY-1BR	CARROLL	40	39

SHEET NO. 8
SHEETS 5

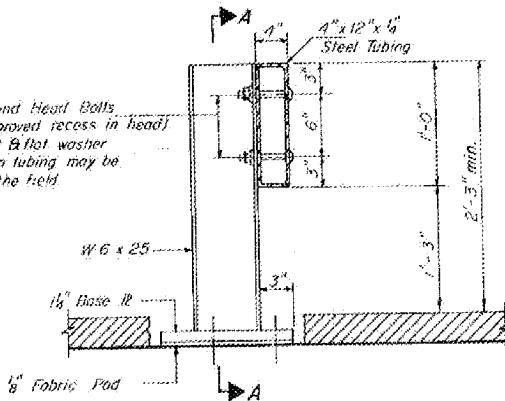


ELEVATION

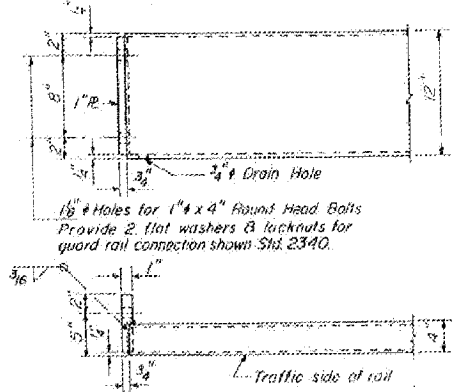


SECTION A-A

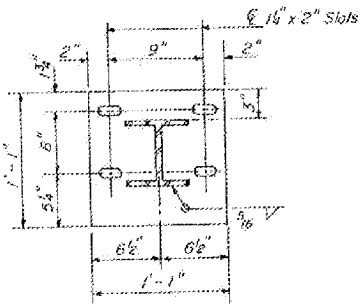
2-3/4" x 6" Round Head Bolts
(With slot or approved recess in head)
with locknut & flat washer
7/8" holes in tubing may be drilled in the field



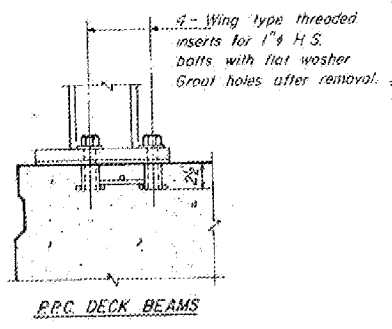
SECTION AT RAIL POST



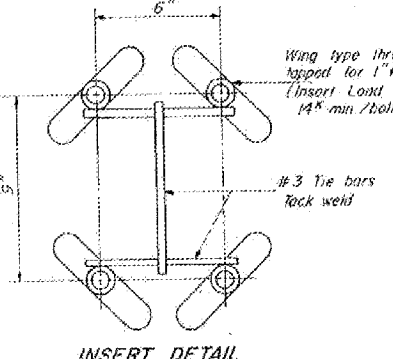
END OF RAIL DETAILS



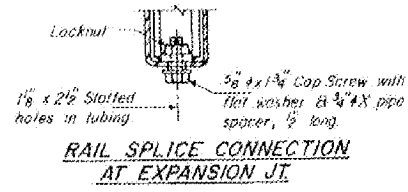
SECTION B-B



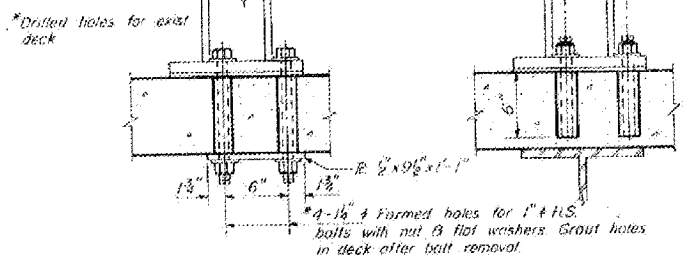
P.R.C. DECK BEAMS



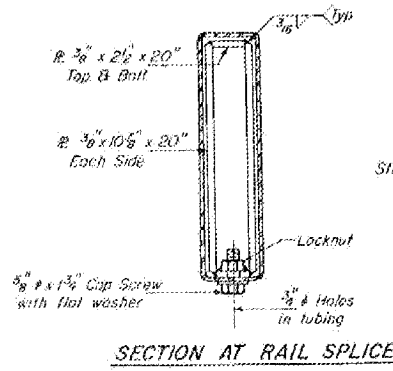
INSERT DETAIL



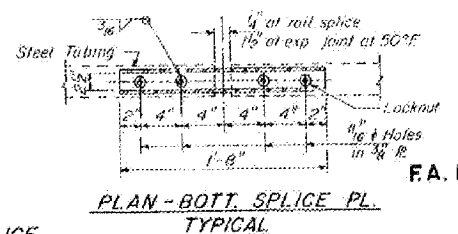
RAIL SPLICE CONNECTION AT EXPANSION JT.



ANCHORAGE DETAILS



SECTION AT RAIL SPLICE



PLAN - BOTT. SPLICE PL. TYPICAL

NOTES
 Hollow structural steel tubing shall conform to the requirements of ASTM designation A-500 Grade B Structural Steel Tubing.
 All other steel shapes and plates shall conform to the requirements of AASHTO M-183 except posts shall conform to AASHTO M-223 Grade 50. Bolts, cap screws, and nuts shall conform to the requirements of ASTM designation A-307 except for high strength bolts, threaded rods, nuts and washers noted which shall conform to AASHTO M-164.
 The bridge rail shall receive one shop coat of a steel prime paint.
 The 1" high strength bolts or threaded rods used to connect the railposts shall be tightened in accordance with Article 50704(g)(5) of the Standard Specification.
 See Special Provisions for Temporary Bridge Rail.
 The Temporary Bridge Rail steel tubing may be used for one rail element of the permanent steel railing, Type S-1 provided the tubing is maintained in good condition during the course of the work as determined by the Engineer in the field.

FOR INFORMATION ONLY

BILL OF MATERIAL

Item	Unit	Quantity
Temporary Bridge Rail	Lin Ft	43

TEMPORARY BRIDGE RAIL
 F.A. RTE. 18 OVER TRIB. OF MISSISSIPPI R.
 F.A. RTE. 18, SECTION 104 BY-1BR
 CARROLL COUNTY
 STA. 566 + 37.11

DESIGNED	DHC
CHECKED	KLF
DRAWN	JED
CHECKED	KLF

R-25 8-30-80 (10'-9" Maximum Post Spacing)

SCALE: 1/2" = 1'-0"