

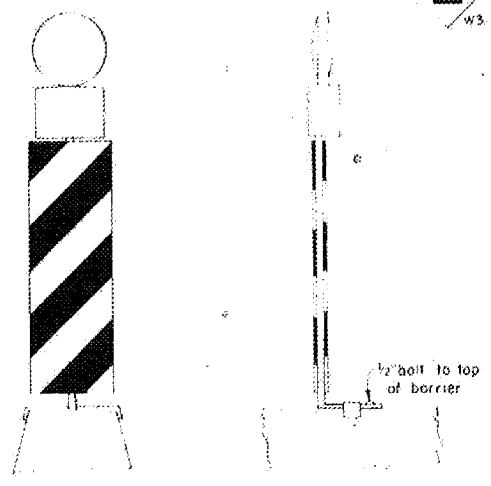
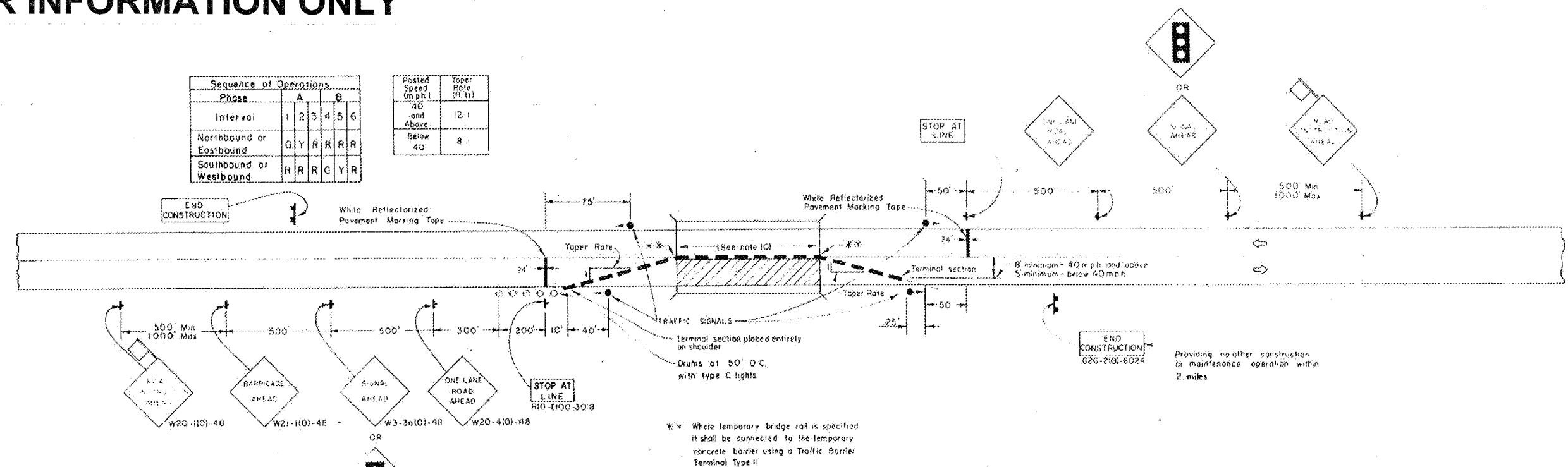
**SPECIAL DETAIL FOR TRAFFIC CONTROL
BRIDGE DECK CONSTRUCTION
UTILIZING TEMPORARY BARRIERS
TYPICAL APPLICATION OF TRAFFIC CONTROL DEVICES**

Revised 6/80				
ROUTE NO.	SEC.	COUNTY	TOTAL SHEETS	SHEET NO.
PA. 18	104-BY-18H	CARROLL	40	30
F.W.A. REG. NO. ILLINOIS PROJECT				

FOR INFORMATION ONLY

Sequence of Operations						
Phase	A			B		
Interval	1	2	3	4	5	6
Northbound or Eastbound	G	Y	R	R	R	R
Southbound or Westbound	R	R	R	G	Y	R

Posted Speed (mph)	Taper Rate (ft:1)
40 and Above	12:1
Below 40	8:1



DETAIL A
suggested mounting detail

* * * Where temporary bridge rail is specified it shall be connected to the temporary concrete barrier using a Traffic Barrier Terminal Type II

GENERAL NOTES

- The Engineer must be notified at least 72 hours prior to placing the temporary signals in operation so that arrangements can be made to inspect the installation and set the timing of the signals. The Contractor must furnish timing cycle gears of 60, 65, 70, 80, 90, 100, and 110 seconds for the controller.
- At any time that the signals are not operating the signal head shall be loaded and the SIGNAL AHEAD sign covered or removed.
- The left signal head shall normally be mounted at a height of 10 feet above the road surface measured to the bottom of the signal head. The right head shall normally be mounted at height of 14 feet above the road surface. Baffle plates will be required on all signals.
- All red lenses shall normally be 12 inch nominal diameter. The right signal head shall be aimed so the centers of the light beams of the indications are directed toward a point in the center of the approach lane 500 feet in advance of the signal. The left indication shall be aimed at a point in the center of the approach lane 100 feet in advance of the stop line.
- Bi-directional steady burning lights and double vertical panels shall be mounted on the barrier or bridge rail at 20 foot centers. Detail A shows a suggested mounting for the temporary concrete barrier. Other methods of mounting may be used upon the approval of the Engineer.
- All signs shall be post mounted if the closing time exceeds four days.
- High intensity flashing lights shall be used on each approach in advance of the work area during hours of darkness, and installed above the first two signs in each series.
- Longitudinal dimensions may be adjusted slightly to fit field conditions.
- All vehicles, equipment, men and their activities are restricted at all times to one side of the pavement unless otherwise authorized by the Engineer.
- Temporary Bridge Rail shall be used across the bridge when specified in the plans.
- Form BT 725 is required.

WHERE, AT ANY TIME, ANY VEHICLE, EQUIPMENT, MEN OR THEIR ACTIVITIES WILL ENCR OACH ON ONE LANE OF A BRIDGE DECK AND TRAFFIC SIGNALS ARE REQUIRED.

SYMBOLS

- Work Area
- 18 in. by 18 in. diamond orange flag
- Sign on post (a for permanent support)
- Drum with steady burning light
- Temporary concrete barrier
- Traffic signal

TWO-LANE, TWO WAY TRAFFIC,
ONE LANE CLOSURE ON A BRIDGE
DECK DAY OR NIGHT OPERATIONS.

SPECIAL DETAILS