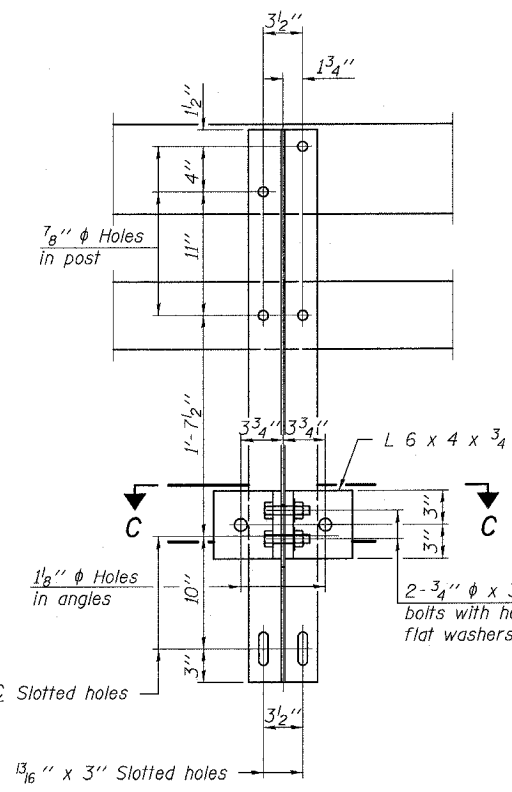
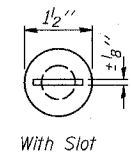
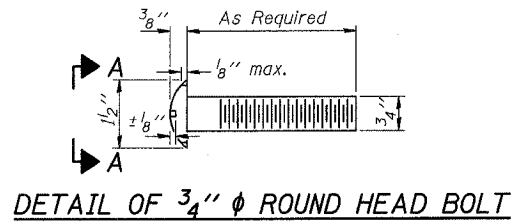


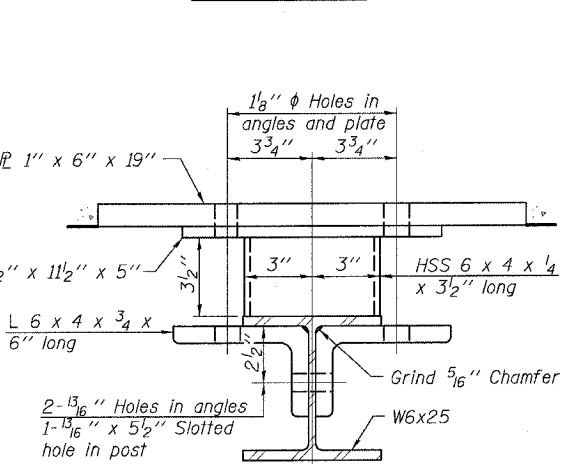
STATE OF ILLINOIS
DEPARTMENT OF TRANSPORTATION

ROUTE NO.	SECTION	COUNTY	SHEETS	SHEET NO.	SHEET NO. 6 9 SHEETS
FAP 308	104-BY-1BRD	CARROLL	40	18	
FED. ROAD DIST. NO. 7		ILLINOIS		FED. AID PROJECT	

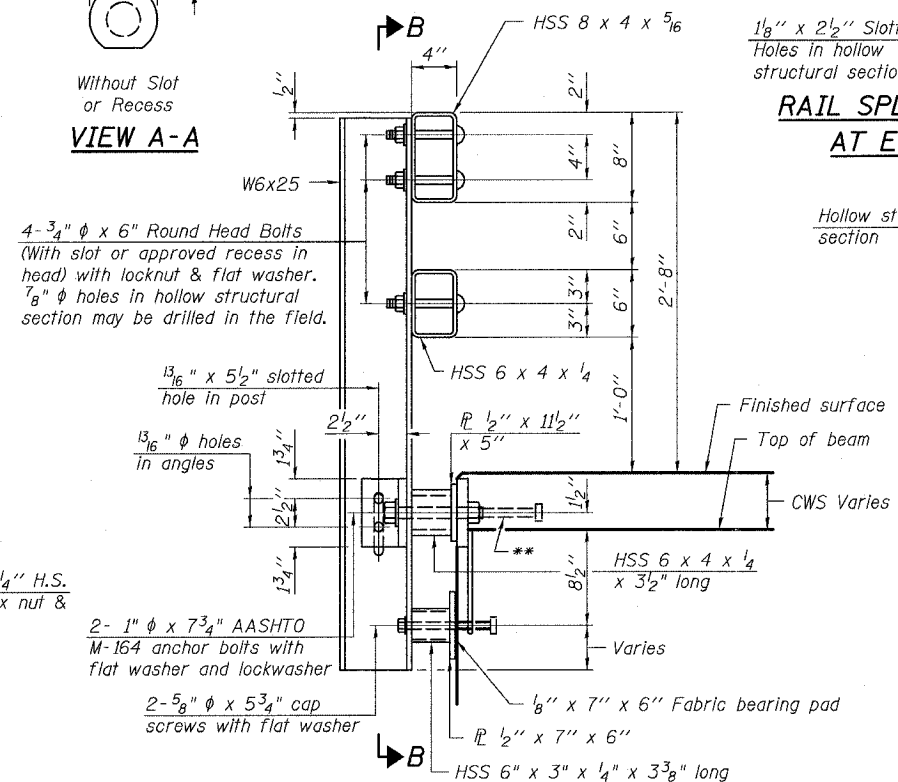
Contract #64D14



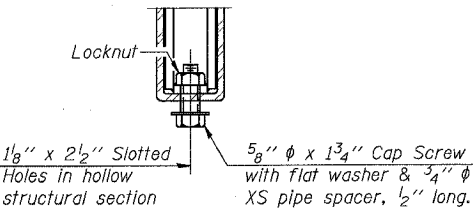
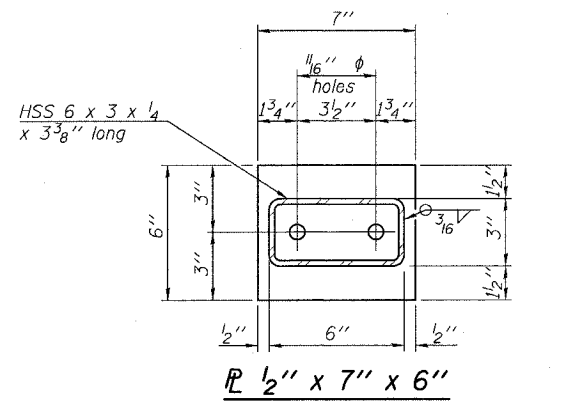
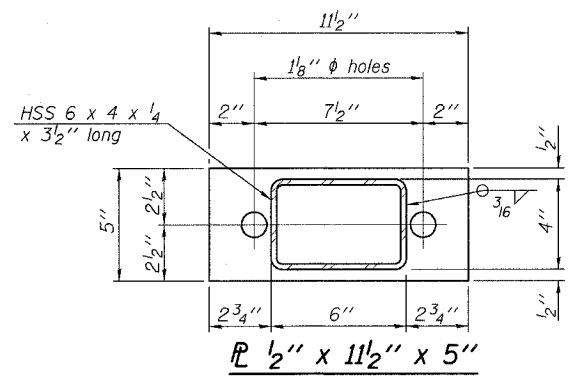
SECTION B-B



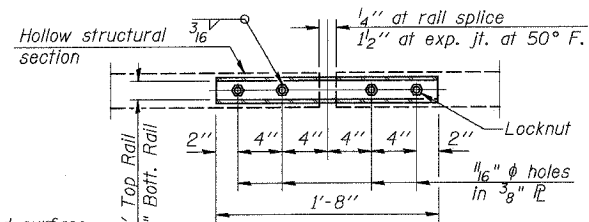
SECTION C-C



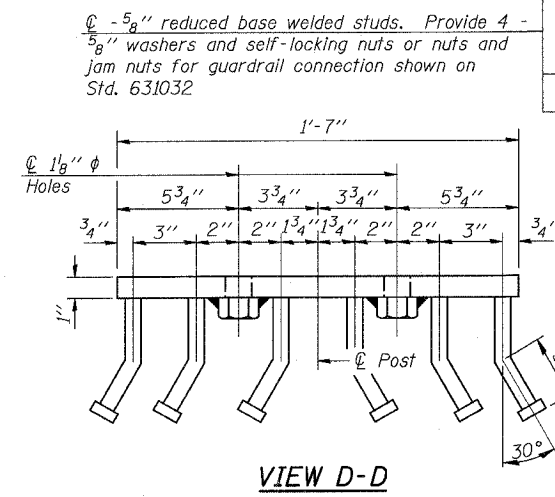
SECTION AT RAIL POST



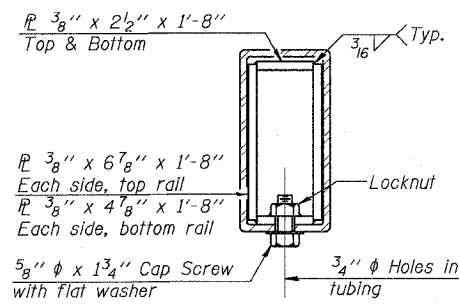
RAIL SPLICE CONNECTION
AT EXPANSION JT.



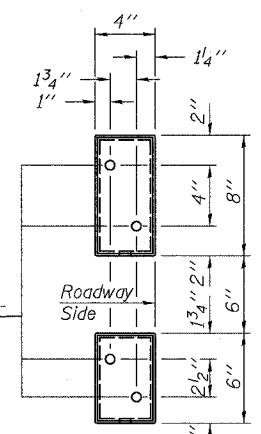
PLAN-BOTT. SPLICE R
TYPICAL



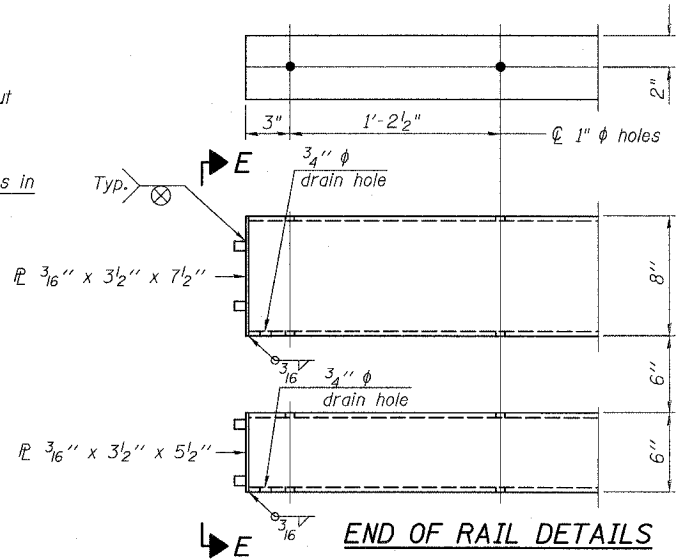
VIEW D-D



SECTION AT
RAIL SPLICE

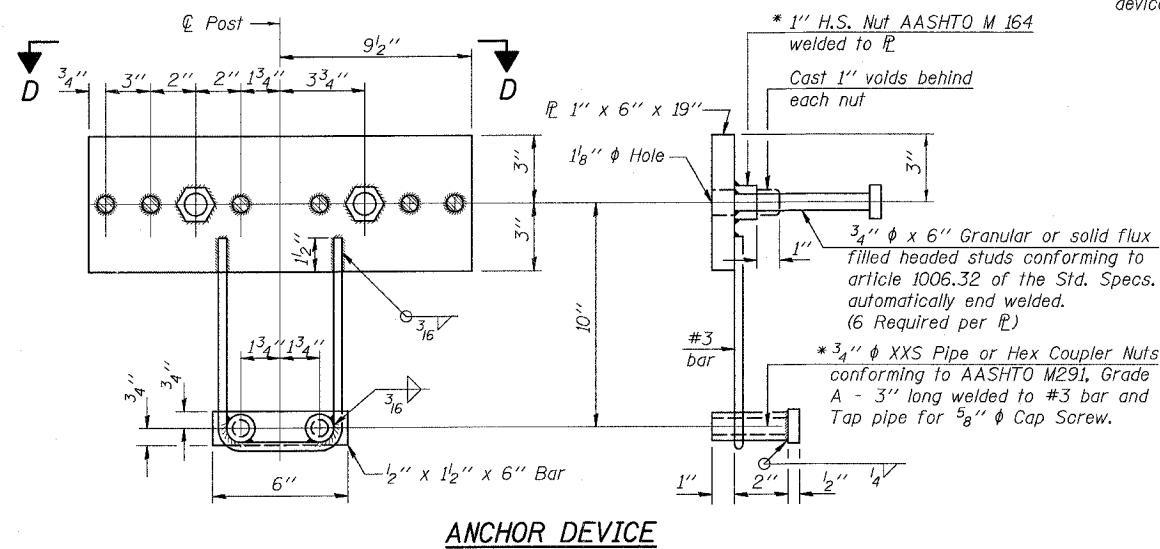


VIEW E-E



END OF RAIL DETAILS

Notes:
All field drilled holes shall be coated with an approved zinc rich paint before erection.
For multi-span bridges, sufficient 1/4 inch x 6 inch x 1-2 inch galvanized steel shims shall be provided to align rail between adjacent spans. Cost included with Steel Bridge Rail, Type SM.
Steel rail elements shall be galvanized according to Article 509.05 of the Standard Specifications.
** The studs of the anchor devices shall be placed below the top reinforcement bars and the outermost longitudinal reinforcement bar shall be placed directly above the studs of the rail post anchor device.



ANCHOR DEVICE

* Threaded areas shall be plugged or blocked off during casting of beam. Galvanized after fabrication.

BILL OF MATERIAL

Item	Unit	Quantity
Steel Railing, Type SM	Foot	86

ILLINOIS DEPARTMENT OF TRANSPORTATION
STEEL RAILING, TYPE SM
WITH CONCRETE WEARING SURFACE
IL-84 OVER A DRAINAGE DITCH
FAP ROUTE 308 SECTION (104-BY-1BRD)
CARROLL COUNTY
STATION 566+38
STRUCTURE NO. 008-0016

SCALE: NONE
DATE 10/10/07

DESIGNED	GPM
CHECKED	BRT
DRAWN	GPM
CHECKED	BRT

R-34CWS

11-1-06 (6'-3" Maximum Post Spacing) (5" minimum to 7 1/8" maximum CWS thickness)