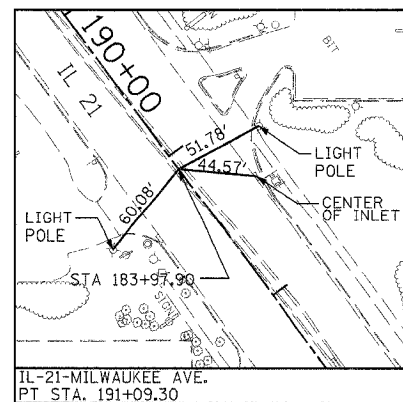
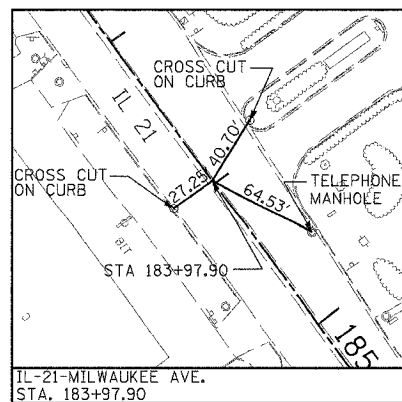
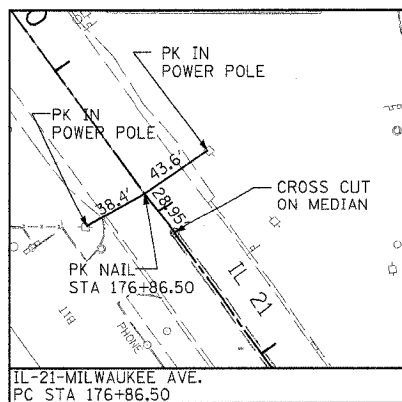
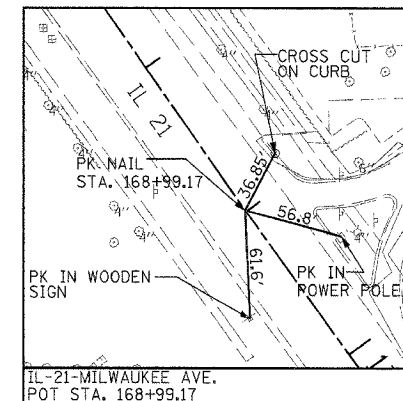
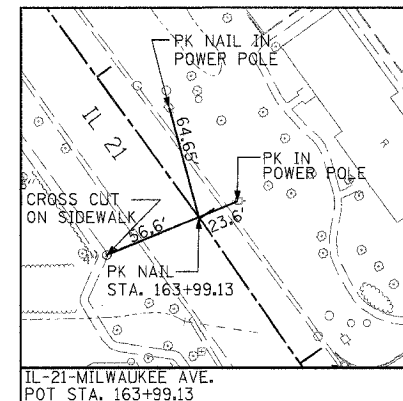
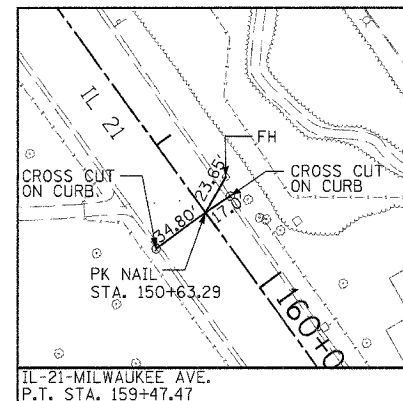
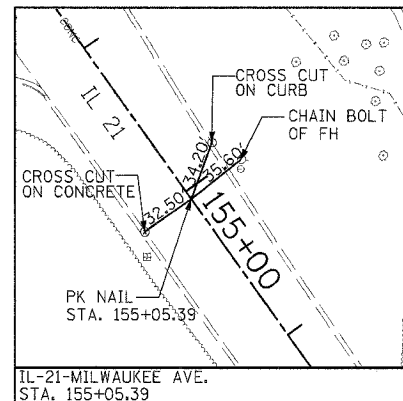
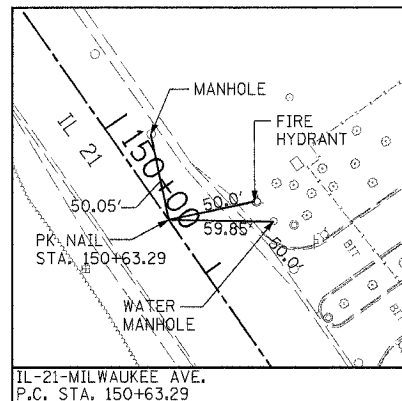
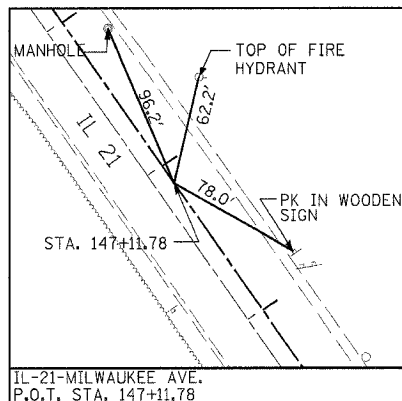
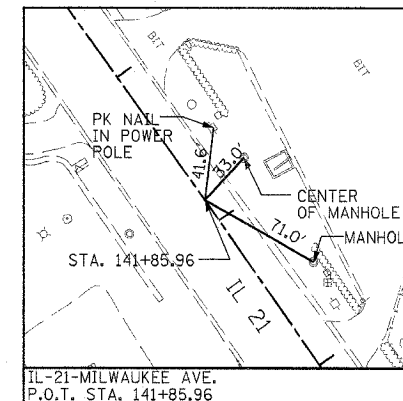
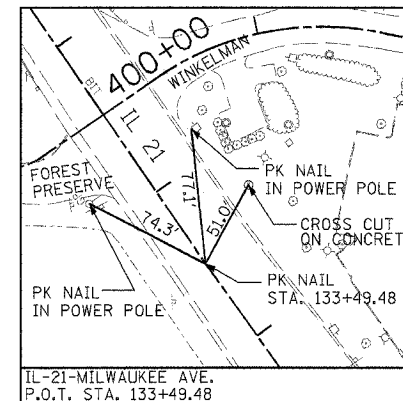
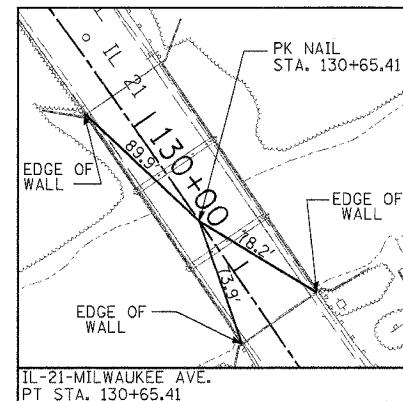
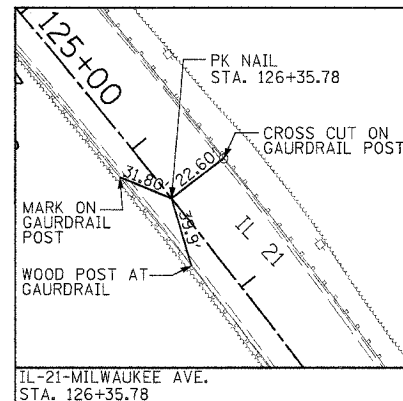
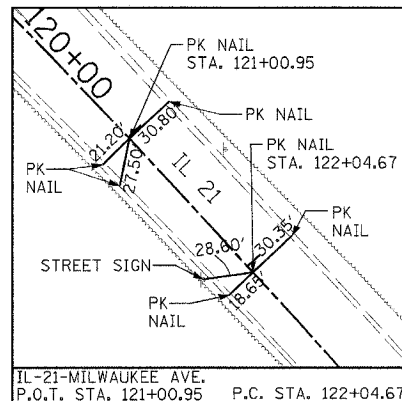
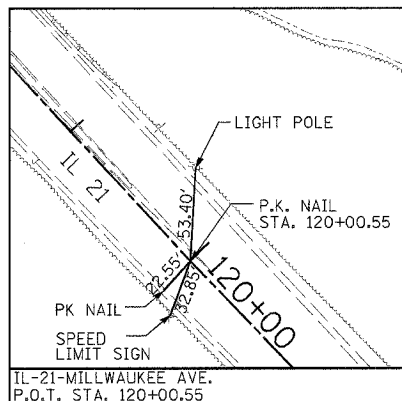
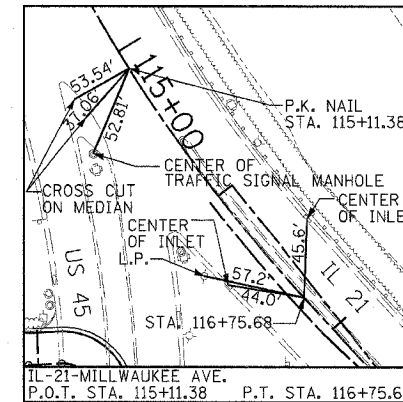
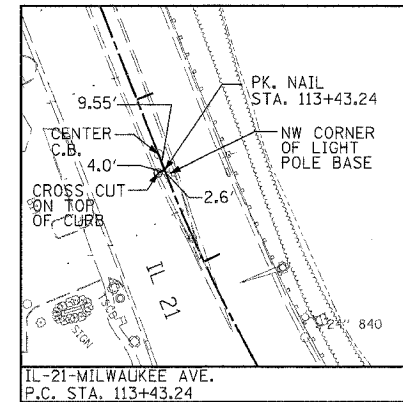
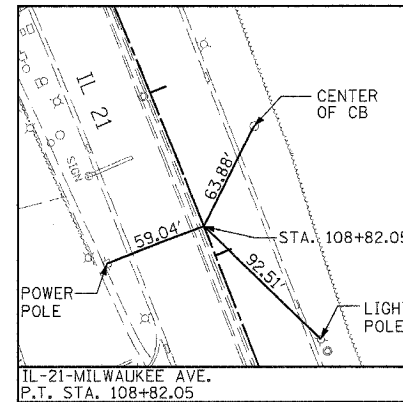
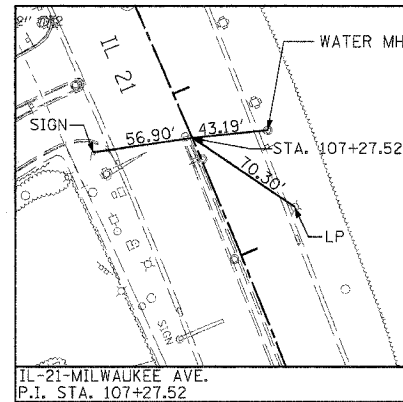
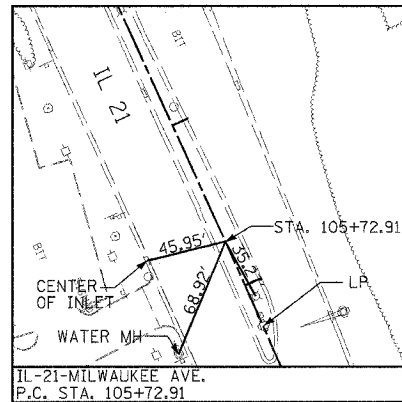
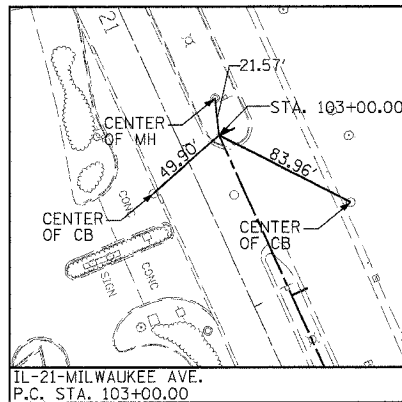


F.A.P. RTE.	SECTION	COUNTY	TOTAL SHEETS	SHEET NO.
374	2007-060 I	COOK	21	5
STA.		TO STA.		
FED. ROAD DIST. NO.		ILLINOIS FED. AID PROJECT		
CONTRACT NO. 60DB0				



REVISIONS	
NAME	DATE

ILLINOIS DEPARTMENT OF TRANSPORTATION
ALIGNMENT, TIES AND BENCHMARKS
ILLINOIS ROUTE 21

DATE: 10-26-07
DRAWN BY: DK
CHECKED BY: JA/GC

DELTA ENGINEERING, INC.
CONSULTING ENGINEERS, CONSTRUCTION MANAGERS, SURVEYORS
111 W. JACKSON BLVD., SUITE 910 CHICAGO, IL 60604-2001
Ph: 312-377-7700 Fax: 312-427-4145

STV Incorporated 200 W Monroe - Suite 1650
Chicago, Illinois 60606
engineers/architects/scientists/construction managers