

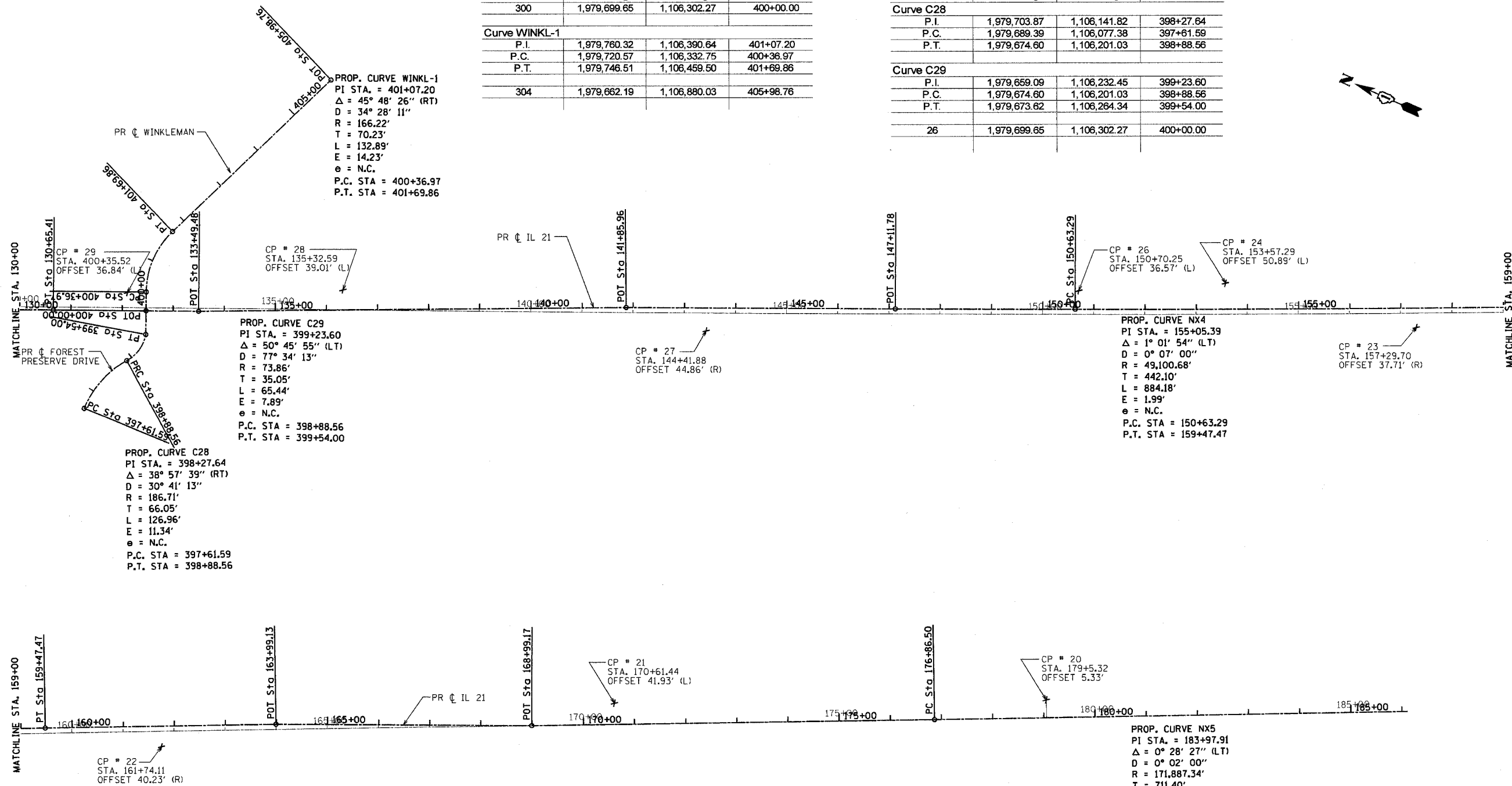
F.A.P. RTE.	SECTION	COUNTY	TOTAL SHEETS	SHEET NO.
374	2007-060 I	COOK	21	4
STA. 130+00.00		TO STA. 186+00.00		
FED. ROAD DIST. NO.		ILLINOIS	FED. AID PROJECT	
CONTRACT NO. 60080				

WINKLEMAN PROPOSED CENTERLINE

Point No.	Northing	Easting	Station
300	1,979,699.65	1,106,302.27	400+00.00
Curve WINKL-1			
P.I.	1,979,760.32	1,106,390.64	401+07.20
P.C.	1,979,720.57	1,106,332.75	400+36.97
P.T.	1,979,746.51	1,106,459.50	401+69.86
304	1,979,662.19	1,106,880.03	405+98.76

FOREST PRESERVE DRIVE PROPOSED CENTERLINE

Point No.	Northing	Easting	Station
Curve C28			
P.I.	1,979,703.87	1,106,141.82	398+27.64
P.C.	1,979,689.39	1,106,077.38	397+61.59
P.T.	1,979,674.60	1,106,201.03	398+88.56
Curve C29			
P.I.	1,979,659.09	1,106,232.45	399+23.60
P.C.	1,979,674.60	1,106,201.03	398+88.56
P.T.	1,979,673.62	1,106,264.34	399+54.00
26	1,979,699.65	1,106,302.27	400+00.00

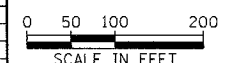


CONTROL POINTS:

CP No.	ELEVATION	CP No.	ELEVATION	CP No.	ELEVATION
CP 20	649.188	CP 23	646.684	CP 27	642.238
N = 1975925.07	E = 1109032.10	N = 1977649.22	E = 1107703.70	N = 1978781.23	E = 1106899.73
3/8" IRON PIPE WITH CAP		SPIKE NAIL		SPIKE NAIL	
CP 21	646.165	CP 24	647.402	CP 28	639.802
N = 1976611.94	E = 1108541.87	N = 1978003.82	E = 1107559.620	N = 1979407.44	E = 1106557.04
IRON PIPE WITH CAP		SPIKE NAIL		SPIKE NAIL	
CP 22	643.786	CP 26	643.946	CP 29	642.185
N = 1977287.64	E = 1107962.38	N = 1978230.18	E = 1107382.952	N = 1979750.13	E = 1106310.69
CHISELED CROSS		CHISELED CROSS		PK NAIL	

REVISIONS	
NAME	DATE

ILLINOIS DEPARTMENT OF TRANSPORTATION
ALIGNMENT, TIES AND BENCHMARKS
ILLINOIS ROUTE 21



DATE: 10-26-07
DRAWN BY: DK
CHECKED BY: JA/GC

DELTA ENGINEERING, INC.
CONSULTING ENGINEERS, CONSTRUCTION MANAGERS, SURVEYORS
111 W. JACKSON BLDG., SUITE 910 CHICAGO, IL 60604-2001
PH: 312-377-7700 FAX: 312-427-6145

STV Incorporated 200 W Monroe - Suite 1650
Chicago, Illinois 60606
engineers/architects/scientists/construction managers