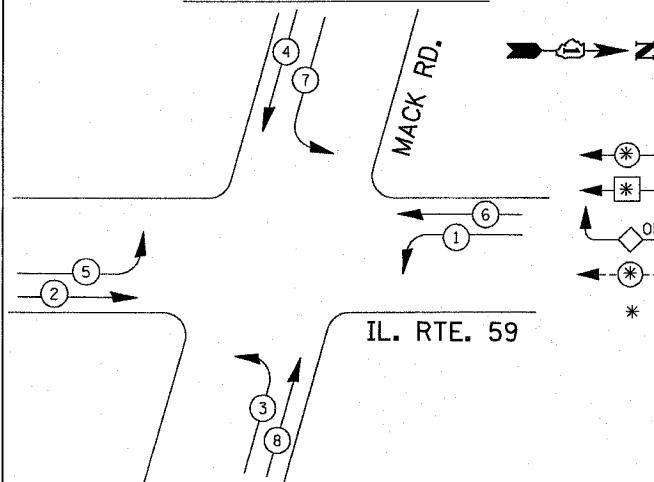


**CONTROLLER SEQUENCE**



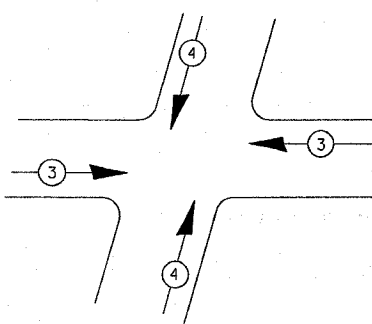
**LEGEND**

- DUAL ENTRY PHASE
- PROTECTED LEFT TURN PHASE
- OVERLAP
- PEDESTRIAN PHASE
- \* NUMBER REFERS TO ASSOCIATED PHASE

**PHASE DESIGNATION DIAGRAM**

DUAL ENTRY - ALL LEGS  
PROTECTED/PERMITTED LEFT TURN PHASING

**PROPOSED EMERGENCY VEHICLE SEQUENCE**



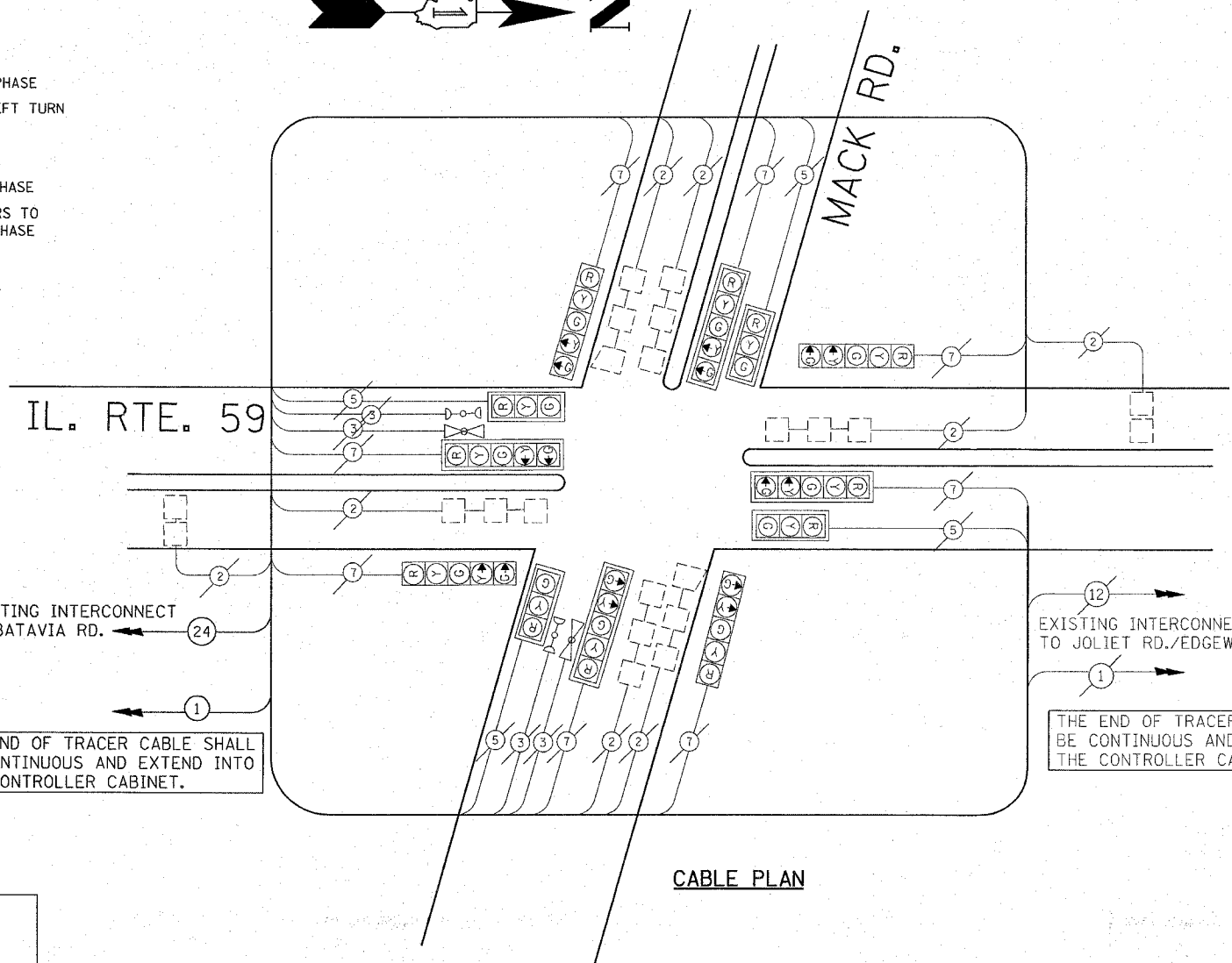
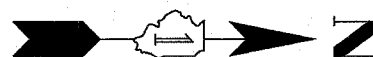
**EXISTING EMERGENCY VEHICLE PREEMPTOR**

EMERGENCY VEHICLE PREEMPTOR	3	4
MOVEMENT		

IL. RTE. 59

EXISTING INTERCONNECT TO BATAVIA RD.

THE END OF TRACER CABLE SHALL BE CONTINUOUS AND EXTEND INTO THE CONTROLLER CABINET.



**CABLE PLAN**

EXISTING INTERCONNECT TO JOLIET RD./EDGEWOOD

THE END OF TRACER CABLE SHALL BE CONTINUOUS AND EXTEND INTO THE CONTROLLER CABINET.

**CABLE PLAN LEGEND**

- |  |                 |                 |
|--|-----------------|-----------------|
|  | <b>PROPOSED</b> | <b>EXISTING</b> |
| CONTROLLER CABINET   |                 |                 |
| RAILROAD CONTROL CABINET   |                 |                 |
| SERVICE INSTALLATION, (P) POLE OR (G) GROUND MOUNT                                       |                 |                 |
| TELEPHONE CONNECTION   |                 |                 |
| GROUND ROD AT (C) CONTROLLER, (H) HANDHOLE, (P) POST, (M) MAST ARM, OR (S) SERVICE       |                 |                 |
| FIBER OPTIC CABLE IN CONDUIT, NUMBER OF FIBERS AS NOTED                                  |                 |                 |
| ELECTRIC CABLE IN CONDUIT, NO. 14, UNLESS OTHERWISE NOTED, NUMBER OF CONDUCTORS AS NOTED |                 |                 |
| GROUND CABLE IN CONDUIT NO. 6 COPPER (GREEN)   |                 |                 |
| SIGNAL FACE WITH BACKPLATE. 'P' INDICATES PROGRAMMED HEAD                                |                 |                 |
| 12" (300mm) RED WITH 8" (200mm) YELLOW AND GREEN TRAFFIC SIGNAL FACE                     |                 |                 |
| 12" (300mm) TRAFFIC SIGNAL SECTION   |                 |                 |
| 12" (300mm) PEDESTRIAN SIGNAL SECTION  |                 |                 |
| ILLUMINATED SIGN "NO LEFT TURN"  |                 |                 |
| ILLUMINATED SIGN "NO RIGHT TURN"   |                 |                 |
| PUSHBUTTON DETECTOR  |                 |                 |
| DETECTOR LOOP  |                 |                 |
| PREFORMED DETECTOR LOOP  |                 |                 |
| MICROWAVE VEHICLE SENSOR   |                 |                 |
| VIDEO DETECTOR   |                 |                 |
| CLOSED CIRCUIT TV  |                 |                 |
| EMERGENCY VEHICLE SYSTEM DETECTOR  |                 |                 |
| CONFIRMATION BEACON  |                 |                 |
| UNINTERRUPTABLE POWER SUPPLY   |                 |                 |

I.D.O.T. TRAFFIC SIGNAL INSTALLATION ELECTRICAL SERVICE REQUIREMENTS					TOTAL WATTAGE
TYPE	NO. LAMPS	WATTAGE INCAND.	WATTAGE LED	% OPERATION	
SIGNAL (RED)	12	135	17	0.50	102.00
(YELLOW)	12	135	25	0.25	75.00
(GREEN)	12	135	15	0.25	45.00
ARROW	16	135	12	0.10	19.20
PED. SIGNAL		90	25	1.00	
CONTROLLER	1	100	100	1.00	100.00
ILLUM. SIGN		84		0.05	
FLASHER				0.50	
ENERGY COSTS TO:					TOTAL = 341.20
ILLINOIS DEPARTMENT OF TRANSPORTATION 201 WEST CENTER COURT SCHLAUBURG, ILLINOIS 60196-1096 CONTACT: KEA MCKENZIE PHONE: 630-437-2495 COMPANY: COMM. ED.					

FOUNDATION (DEPTH)	FT. (m)	CABLE SLACK	FT. (m)	VERTICAL	FT. (m)
TYPE A - POST	4 (1.2)	HANDHOLE	6.5 (2.0)	ALL FOUNDATIONS	3.5 (1.0)
D - CONTROLLER	4 (1.2)	DOUBLE HANDHOLE	13 (4.0)	MAST ARM (L) POLE	20'HL-2"=
E - M. ARM POLE		SIGNAL POST	2 (0.6)	(6m+L-0.6m)=	
24" (600mm)	10 (3.0)	CONTROLLER CAB.	1 (0.5)	BRACKET MOUNTED	13 (4.0)
30" (750mm)	15 (4.6)	FIBER OPTIC	13 (4.0)	PED. PUSHBUTTON	4 (1.2)
36" (900mm)	15 (4.6)	ELECTRIC SERVICE	1 (0.5)	ELECTRIC SERVICE	13.5 (4.1)
		GROUND CABLE	1 (0.5)	SERVICE TO GROUND	13.5 (4.1)
				POST MOUNTED	6 (1.8)

RESTORATION OF WORK AREA, RESTORATION OF THE TRAFFIC SIGNAL WORK AREA SHALL BE INCLUDED IN THE RELATED PAY ITEMS SUCH AS FOUNDATION, CONDUIT, HANDHOLE, TRENCH AND BACKFILL, ETC. ALL ROADWAY SURFACES SUCH AS SHOULDERS, MEDIANS, SIDEWALKS, PAVEMENT, ETC. SHALL BE REPLACED IN KIND. ALL DAMAGE TO MOWED LAWNS SHALL BE REPLACED WITH AN APPROVED SOD AND ALL DAMAGE TO UNMOWED FIELDS SHALL BE SEEDED. RESTORATION OF THE WORK AREA SHALL BE INCIDENTAL TO THE CONTRACT WITHOUT ANY EXTRA COMPENSATION ALLOWED TO THE CONTRACTOR.

REVISIONS		ILLINOIS DEPARTMENT OF TRANSPORTATION
NAME	DATE	
		<p><b>CABLE PLAN, PHASE DESIGNATION DIAGRAM, AND EMERGENCY VEHICLE PREEMPTION SEQUENCE IL. RTE. 59 AT MACK RD.</b></p> <p>SCALE: _____ DATE: 11/19/2007</p> <p>DRAWN BY: BCK DESIGNED BY: BCK CHECKED BY: DAD</p>

c:\projects\tr-traffic\1159\batavia.dgn 11/19/2007