

F.A.P. RTE.	SECTION	COUNTY	TOTAL SHEETS	SHEET NO.
338	112 N-2	DUPAGE	42	1

STATE OF ILLINOIS
DEPARTMENT OF TRANSPORTATION
DIVISION OF HIGHWAYS

**PROPOSED
HIGHWAY PLANS**

F.A.P. 338 (IL-59)
AT BATAVIA ROAD

SECTION: 112 N-2 PROJ. ACHSIP-0338(033)

**RESURFACING (MAINTENANCE)
AND TRAFFIC SIGNAL MODERNIZATION
DUPAGE COUNTY**

C-91-033-08

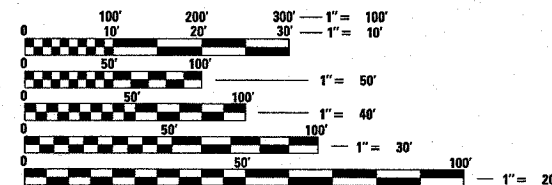
R. 9 E.

FOR INDEX OF SHEETS, SEE SHEET NO. 2

THE PROJECT IS LOCATED
IN THE CITY OF WARRENVILLE



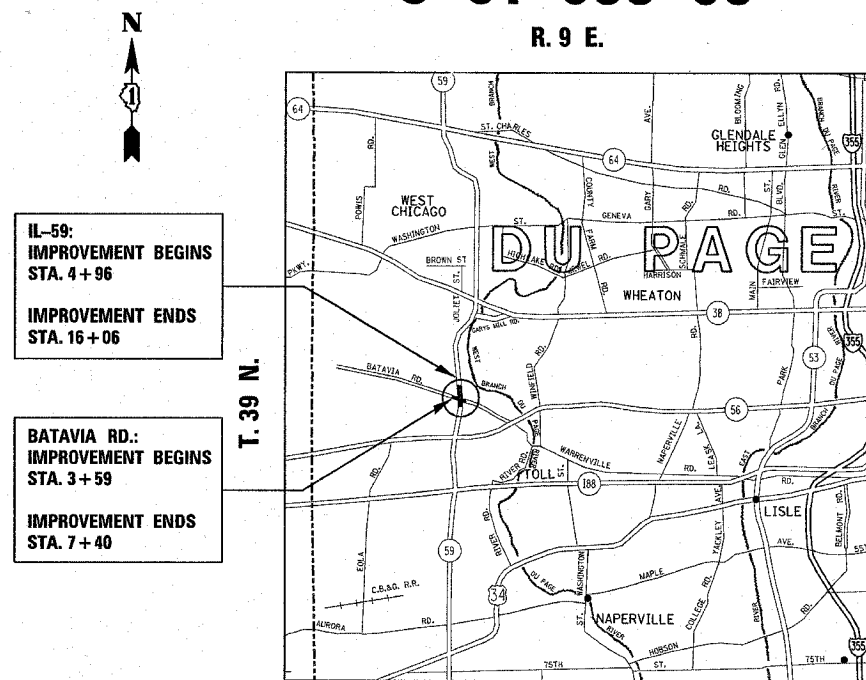
DISTRICT 1 DESIGN - PLAN PREP ENGINEER: KEN ENG/LONG TRAN - (847) 705-4240



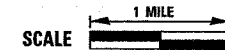
FULL SIZE PLANS HAVE BEEN PREPARED USING STANDARD ENGINEERING SCALES. REDUCED SIZED PLANS WILL NOT CONFORM TO STANDARD SCALES. IN MAKING MEASUREMENTS ON REDUCED PLANS, THE ABOVE SCALES MAY BE USED.

J.U.L.I.E.
JOINT UTILITY LOCATION INFORMATION FOR EXCAVATION
1-800-892-0123

CONTRACT NO. 60D51



WINFIELD TOWNSHIP



GROSS AND NET LENGTH OF IMPROVEMENT = 1448 FT (0.27 MILE)

AVERAGE DAILY TRAFFIC
2005 ADT = 38,800 (IL 59)
= 10,200 (BATAVIA RD.)

POSTED SPEED LIMIT
45 MPH

STATE OF ILLINOIS
DEPARTMENT OF TRANSPORTATION
DIVISION OF HIGHWAYS

SUBMITTED October 25, 2007

Diane O'Keefe
DEPUTY DIRECTOR OF HIGHWAYS, REGION ENGINEER
December 7, 2007

Eric E. Clark
ENGINEER OF DESIGN AND ENVIRONMENT
December 7, 2007

Christina M. Reed
DIRECTOR OF HIGHWAYS, CHIEF ENGINEER

**PRINTED BY THE AUTHORITY
OF THE STATE OF ILLINOIS**