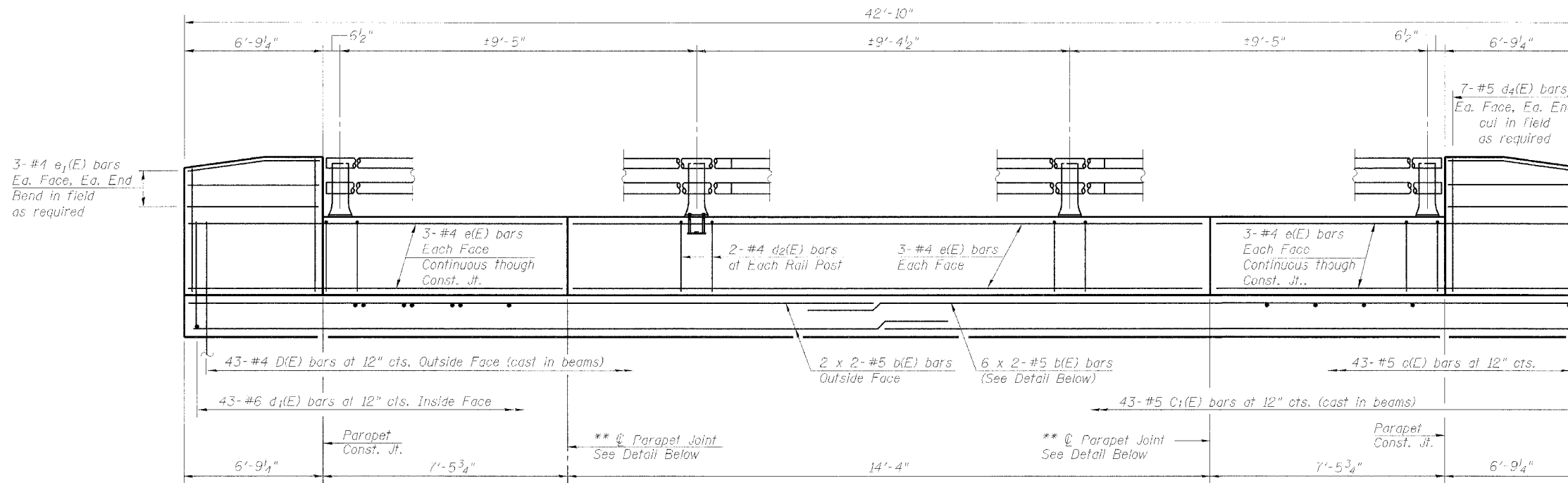


STATE OF ILLINOIS  
DEPARTMENT OF TRANSPORTATION

ROUTE NO.	SECTION	COUNTY	CITY	SHEET NO.	SHEET NO. 11 16 SHEETS
3887	AR-B	KANE	43	27	
FED. ROAD DIST. NO. 7		ILLINOIS		FED. AID PROJECT	

Contract #60C23



Note: For D(E) and C<sub>1</sub>(E) bar details, See Sht. 7 of 16.

**ELEVATION OF PARAPETS**  
(Inside Face)

\*\* 1/4" x 3/4" Formed joint in top of sidewalk at Parapet Joint location, (typ) with Concrete Sealer (full width along joint, backer rod not required.)

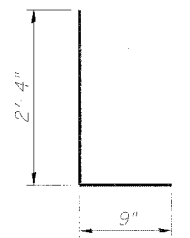
**BILL OF MATERIAL**

Two Parapets and Sidewalks and North Abutment (Sht. 15 of 16)

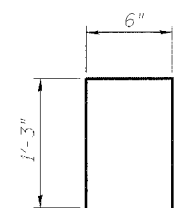
Bar	No.	Size	Length	Shape
b(E)	32	#5	22'-2"	—
c(E)	86	#5	5'-8"	—
d <sub>1</sub> (E)	86	#6	3'-0"	L
d <sub>2</sub> (E)	16	#4	3'-0"	□
d <sub>3</sub> (E)	2	#5	9'-9"	□
d <sub>4</sub> (E)	56	#5	3'-3"	—
e(E)	36	#4	13'-11"	—
e <sub>1</sub> (E)	24	#4	6'-5"	—
h(E)	6	#6	24'-8"	—
h <sub>1</sub> (E)	6	#6	20'-8"	—
h <sub>2</sub> (E)	6	#6	8'-9"	—
u(E)	72	#4	4'-8"	□
Reinforcement Bars, Epoxy Coated			Pound	3030
Concrete Superstructure			Cu. Yd.	26.5

**NOTES**

1. Provide all cast in inserts, drilled in place anchors as required to remount existing aluminum railing. Provide new gaskets and mounting pads. Straighten railing as required. Cost of all material and labor to remove, store, remount railing shall be included in cost of "Removing and Re-erecting Existing Railing". Field verify all post and rail dimensions. Concrete Superstructure shall include all sidewalks, parapets, and back wall on north abutment.
2. See Sht. 14 of 16 for Rail Details.
3. 6x2 #5(E) indicates 6 lines of #5 epoxy coated bars with 2 lengths per line.



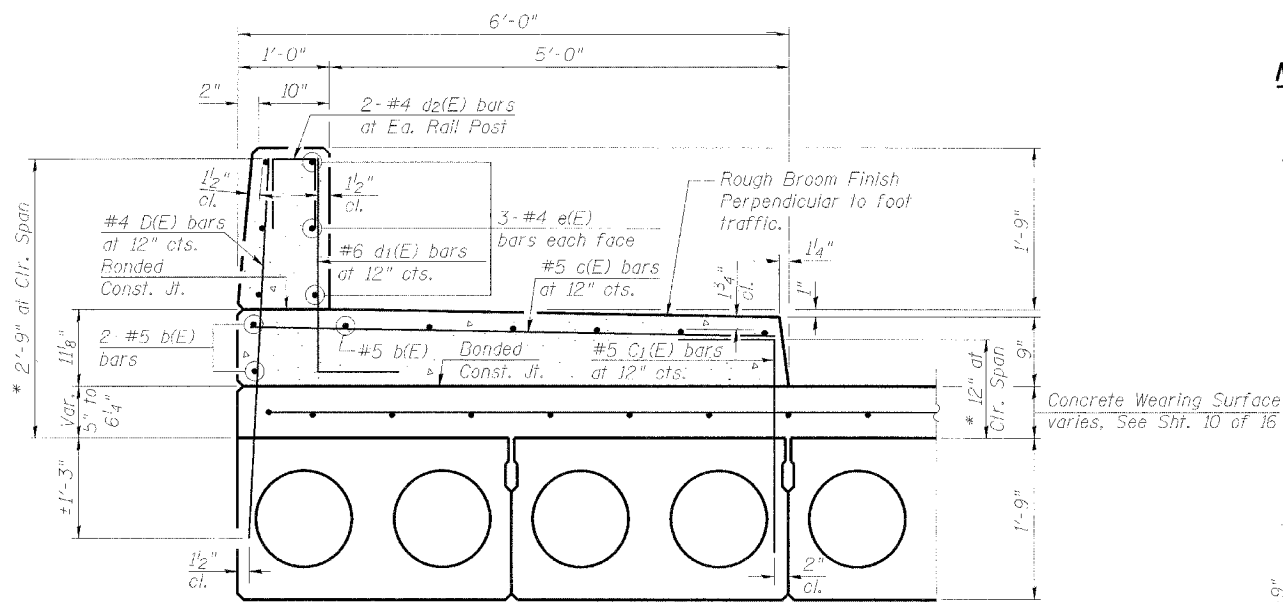
**BAR d<sub>1</sub>(E)**



**BAR d<sub>2</sub>(E)**

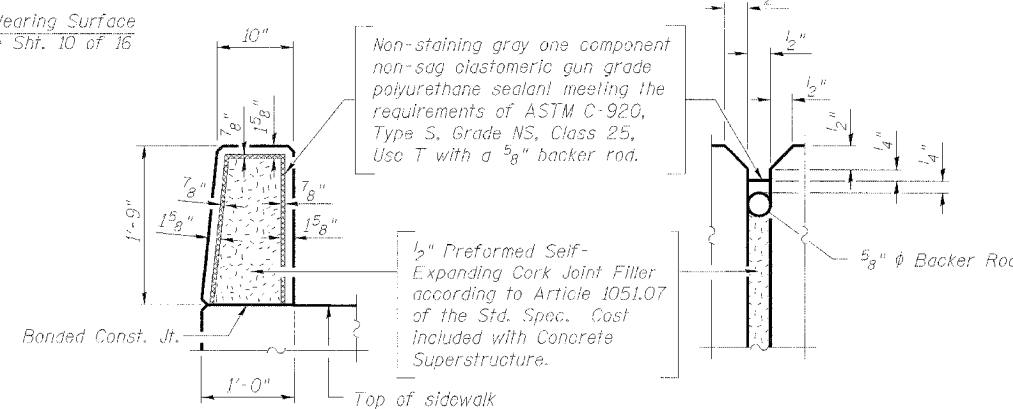
**MIN. BAR LAPS**  
#5 bars = 1'-8"

DESIGNED	LLV
CHECKED	DDB
DRAWN	MGM
CHECKED	LLV



**SECTION THRU PARAPET & SIDEWALK**

\* D(E) and C<sub>1</sub>(E) bar projection linearly varies from center span of beam to 1" greater at bearing ends.



**PARAPET JOINT DETAILS**

**SIDEWALK & PARAPET DETAILS**  
**F.A.U. 3887 (IL 31)**  
**OVER MILL CREEK**  
**SECTION AR-B**  
**KANE COUNTY STA. 187+31.80**  
**STRUCTURE NO. 045-0020**

**STS CONSULTANTS**  
111 NE Jefferson Ave.  
Peoria, Illinois 61602  
Ph(309)676-8464  
FAX(309)676-5445  
IL Design Firm Reg. No. 184-001518