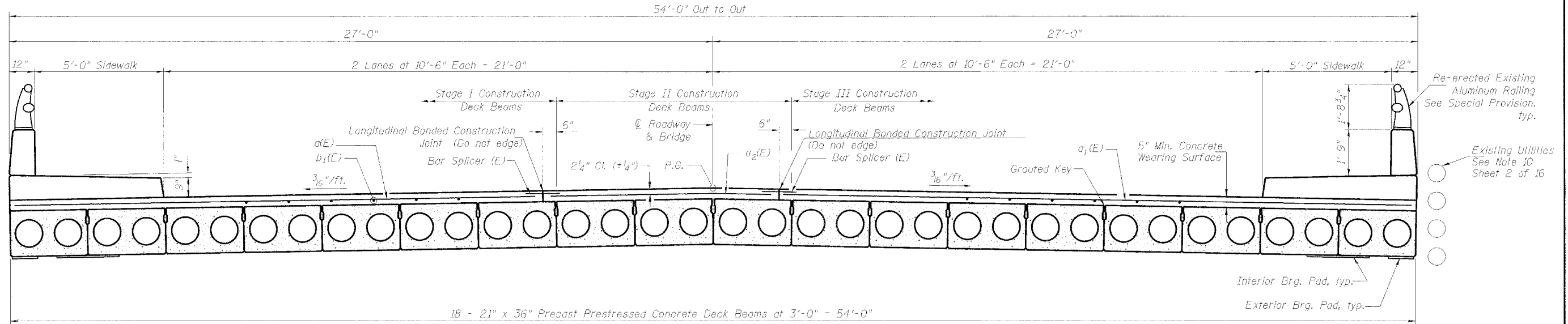


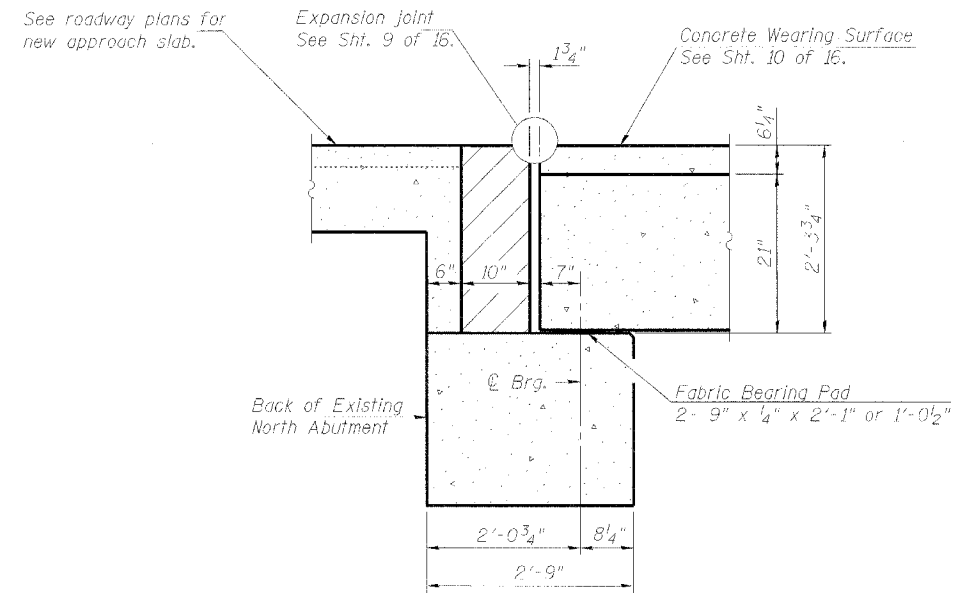
STATE OF ILLINOIS
DEPARTMENT OF TRANSPORTATION

ROUTE NO.	SECTION	COUNTY	TOTAL SHEETS	SHEET NO.
3887	AR-B	KANE	43	24
ILLINOIS		FED. AID PROJECT		

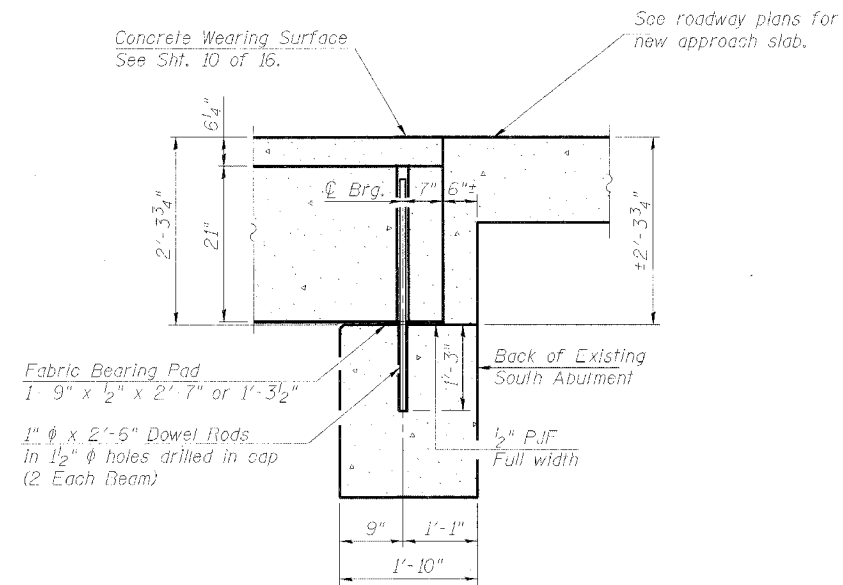
Contract #60C23



CROSS SECTION
(Looking South)



SECTION THRU NORTH ABUTMENT



SECTION THRU SOUTH ABUTMENT

SECTIONS AND BEARING DETAILS
F.A.U. 3887 (IL 31)
OVER MILL CREEK
SECTION AR-B
KANE COUNTY STA. 187+31.80
STRUCTURE NO. 045-0020

DESIGNED	LLV
CHECKED	DDB
DRAWN	MGM
CHECKED	LLV

- Notes:
- After beams have been erected, holes shall be drilled into substructure and anchor dowels placed. Dowel holes shall be filled with non-shrink grout to top of beam and allowed to cure min. 24 hrs. prior to grouting the shear keys.
 - All horizontal dimensions are at right angles to beam ends.
 - See Sht. 7 of 16 for Bearing Pad Details.
 - Existing dowel rods shall be burned off flush with the top of the abutment.

STS CONSULTANTS
111 NE Jefferson Ave.
Peoria, Illinois 61602
Ph(309)676-8464
FAX(309)676-5445
IL Design Firm Reg. No. 184-001518