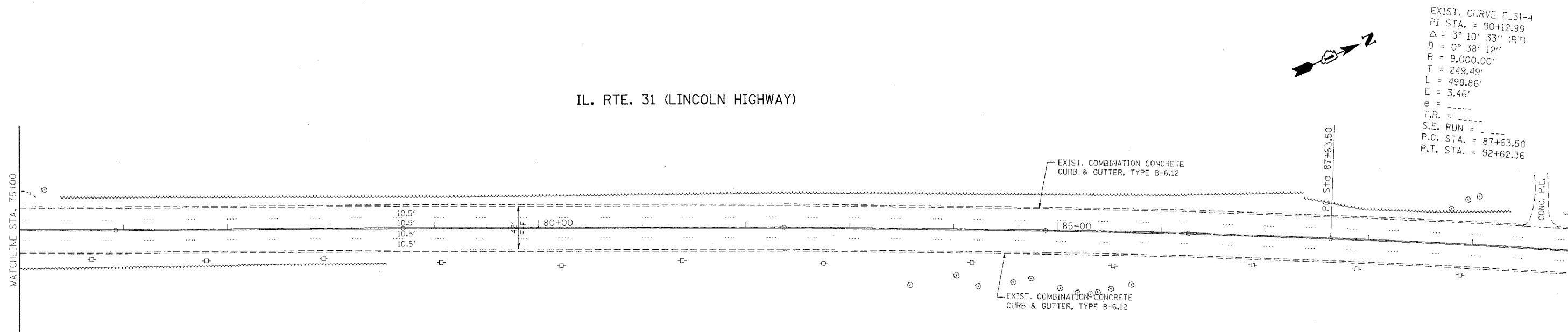


IL. RTE. 31 (LINCOLN HIGHWAY)



LEGEND

- |  |  |
|--|--|
| <p>(A) THERMOPLASTIC PAVEMENT MARKING<br/>EDGE LINE, 4" SOLID WHITE</p> <p>(B) THERMOPLASTIC PAVEMENT MARKING<br/>CENTER LINE, 4" DOUBLE<br/>SOLID YELLOW 2 @ 11" C-C</p> <p>(C) THERMOPLASTIC PAVEMENT MARKING<br/>SKIP-DASH LINE, 4" WHITE</p> <p>(D) POLYUREA PAVEMENT MARKING<br/>CENTER LINE, 4" DOUBLE<br/>SOLID YELLOW 2 @ 11" C-C</p> <p>(E) POLYUREA PAVEMENT MARKING<br/>SKIP-DASH LINE 4" WHITE</p> <p>(F) PAVEMENT MARKING TAPE, TYPE III<br/>EDGE LINE, 4" WHITE</p> <p>(G) PAVEMENT MARKING TAPE, TYPE III<br/>CENTER LINE, 4" DOUBLE<br/>SOLID YELLOW 2 @ 11" C-C</p> <p>(H) PAVEMENT MARKING TAPE, TYPE III<br/>SKIP-DASH LINE, 4" WHITE</p> | <p> WORK ZONE</p> <p> REMOVAL</p> <p> IMPACT ATTENUATOR</p> <p> TRAFFIC FLOW ARROW</p> <p> TEMPORARY BARRIER WALL (STATE OWNED)</p> <p> BARRICADE TYPE I OR TYPE II OR REFLECTORIZED DRUM<br/>OR VERTICAL PANEL WITH STEADY BURNING LIGHTS AT 50' C-C</p> <p> TYPE III BARRICADE WITH STEADY BURNING LIGHTS<br/>TO ADEQUATELY PROTECT THE AREA SHOWN.</p> <p> CONSTRUCTION SIGN AND REFERENCE NUMBER<br/>(REFER TO SIGN DETAIL LEGEND SHEET)</p> |
|--|--|

FILE NAME =  
c:\projects\118207\design\ee.dgn

USER NAME = galbannb  
 PLOT SCALE = 50.0000' / IN.  
 PLOT DATE = 11/5/2007

DESIGNED -	REVISED -
DRAWN -	REVISED -
CHECKED -	REVISED -
DATE -	REVISED -

STATE OF ILLINOIS  
DEPARTMENT OF TRANSPORTATION

FAU 3887: ILL RTE 31 (LINCOLN HIGHWAY) OVER MILL CREEK  
PROPOSED ROADWAY AND PAVEMENT MARKING PLAN

SCALE: SHEET NO. OF SHEETS STA. TO STA.

F.A.U. RTE.	SECTION	COUNTY	TOTAL SHEETS	SHEET NO.
3887	AR-B	KANE	43	9
CONTRACT NO. 60C23				
FED. ROAD DIST. NO. 1 (ILLINOIS) FED. AID PROJECT				