

01-17-2025 LETTING ITEM 118

INDEX OF SHEETS

- | | |
|------|---|
| 1 | COVER SHEET |
| 2 | GENERAL NOTES, COMMITMENTS, HIGHWAY STANDARDS |
| 3-4 | SUMMARY OF QUANTITIES |
| 5 | TYPICAL SECTIONS |
| 6 | ALIGNMENT, TIES, AND BENCHMARKS |
| 7 | PLAN & PROFILE SHEETS |
| 8-14 | DETAIL SHEETS |

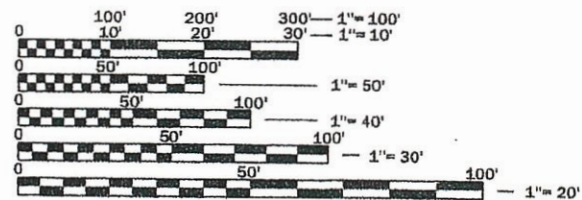
TRAFFIC DATA

PEARL STREET

ADT = 3,900 (2012)
ADT = 4,059 (2020)
ADT = 4,485 (2040)

FUNCTIONAL CLASSIFICATION

MAJOR COLLECTOR



FULL SIZE PLANS HAVE BEEN PREPARED USING STANDARD ENGINEERING SCALES. REDUCED SIZED PLANS WILL NOT CONFORM TO STANDARD SCALES. IN MAKING MEASUREMENTS ON REDUCED PLANS, THE ABOVE SCALES MAY BE USED.

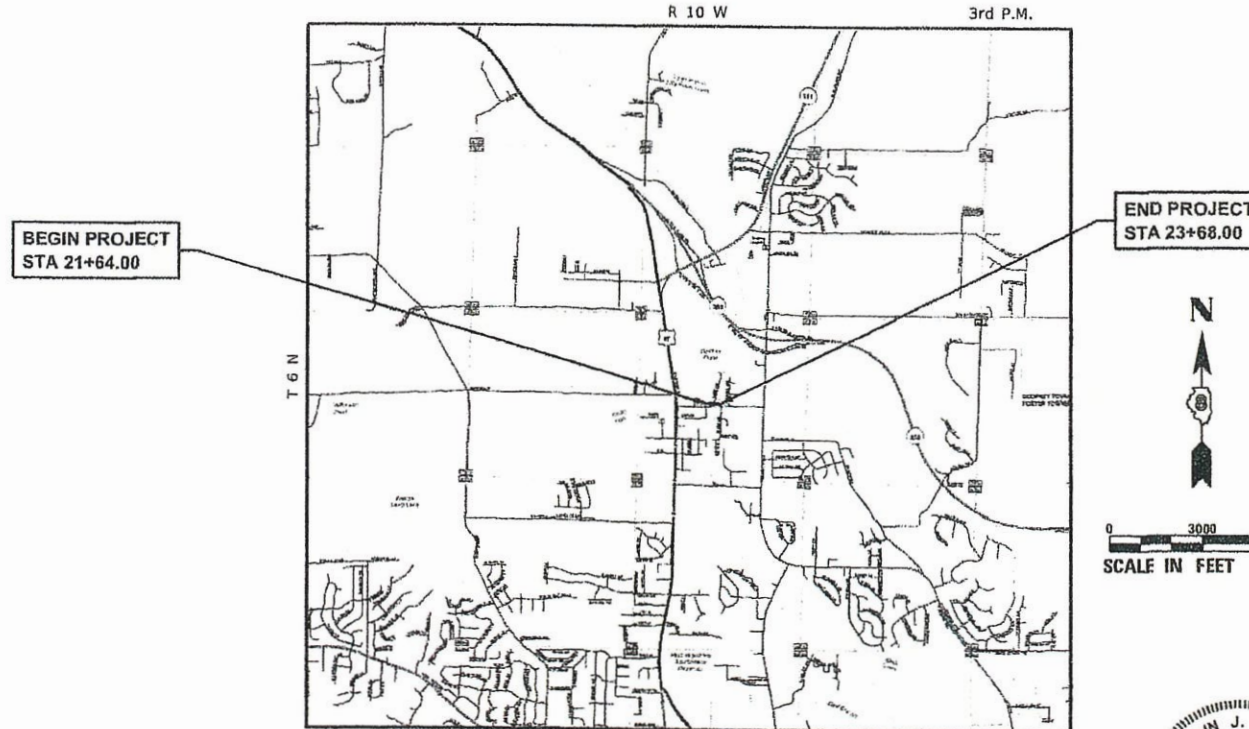
J.U.L.I.E.
JOINT UTILITY LOCATION INFORMATION FOR EXCAVATION
1-800-892-0123
OR 811

STATE OF ILLINOIS LOCAL AGENCY PROJECT

PROPOSED HIGHWAY PLANS

RAILWAY-HIGHWAY SAFETY CROSSING PROGRAM FUNDS
FAU ROUTE 8953 (PEARL STREET)
SECTION 19-00032-02-SW
PROJECT M2EH (908)
SIDEWALK AND PEDESTRIAN
CROSSING ADDITION
AAR/DOT #294428V, MP 252.01 AND
AAR/DOT #441185B, MP 252.02
VILLAGE OF GODFREY
MADISON COUNTY

C-98-019-20

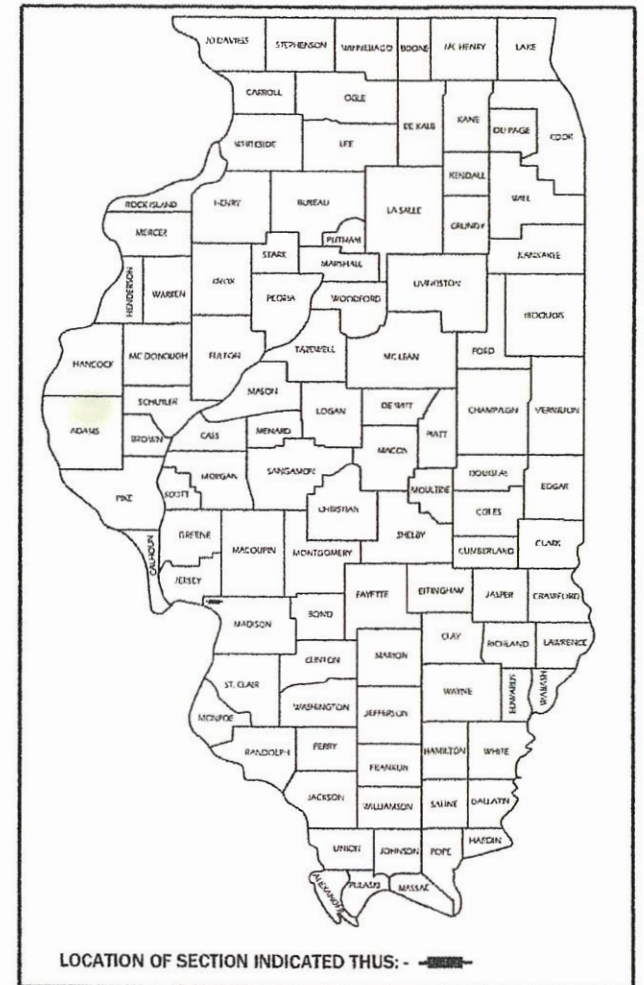


LOCATION MAP

NET LENGTH = 204.00 FT. = 0.0386 MILE
GROSS LENGTH = 204.00 FT. = 0.0386 MILE

SIGNED: *Collin J. Wilcox* 10-30-2024
ILLINOIS PROFESSIONAL ENGINEER NO. 062-070470
LICENSE EXPIRES: 11-30-2025

FAU RTE.	SECTION	COUNTY	TOTAL SHEETS	SHEET NO.
8953	19-00032-02-SW	MADISON	14	1
ILLINOIS CONTRACT NO. 97789				



PLANS PREPARED BY:

LOCHMUELLER GROUP
411 N. 10th Street, Suite 200
St. Louis, MO 63101
PHONE: 314.621.3395

AGENCY RESPONSIBLE FOR LETTING

Approved: *[Signature]*
VILLAGE OF GODFREY, MAYOR

Passed: *[Signature]* 10/30/2024
District 8 Engineer of Local Roads & Streets

Releasing for Bid Based on Limited Review: *[Signature]* 10/30/2024
Regional Engineer

PRINTED BY THE AUTHORITY
OF THE STATE OF ILLINOIS

CONTRACT NO. 97789

GENERAL NOTES

NO WORK SHALL COMMENCE UNTIL TRAFFIC CONTROL REQUIREMENTS ARE MET.

THE CONTRACTOR SHALL DEVELOP A PLAN TO ACCOMPLISH THIS WORK AND MINIMIZE DISRUPTION OF ACCESS. THIS PLAN SHALL BE SUBMITTED TO THE ENGINEER FOR APPROVAL.

THE CONTRACTOR SHALL BE REQUIRED TO PROVIDE ACCESS TO ABUTTING PROPERTIES AT ALL TIMES DURING CONSTRUCTION OF THE PROJECT.
THE CONTRACTOR SHALL PROTECT ALL TREES FROM DAMAGE DUE TO HIS OPERATIONS.

BENCHMARKS FOR THE PROJECT ARE DESCRIBED IN THE PLANS AND ARE BASED ON NORTH AMERICAN VERTICAL DATUM OF 1988 (NAVD 88). ALL BEARINGS AND COORDINATES REFERENCED IN THE PLAN DRAWINGS AND ALL CONTROL COORDINATES ARE BASED ON THE ILLINOIS STATE PLANE COORDINATE SYSTEM, WEST ZONE, NAD 83.

ANY REFERENCE TO A STANDARD IN THESE PLANS SHALL BE INTERPRETED TO MEAN THE EDITION AS INDICATED BY THE SUBNUMBER SHOWN IN THE LIST OF STANDARDS.

THE CONTRACTOR SHALL KEEP EXISTING ADJACENT STREETS CLEAN OF DIRT, MUD, AND OTHER DEBRIS AND, WHEN NECESSARY, CLEAN SAID PAVEMENTS ON A DAILY BASIS OR WHEN DIRECTED BY THE ENGINEER. NO EXTRA COMPENSATION SHALL BE ALLOWED TO THE CONTRACTOR FOR THIS WORK.

IT SHALL BE THE CONTRACTOR'S RESPONSIBILITY TO MAINTAIN DRAINAGE FLOWS AT ALL TIMES DURING THE PERFORMANCE OF THE WORK. METHODS USED BY THE CONTRACTOR SHALL BE SUBJECT TO APPROVAL OF THE ENGINEER. THE COST OF MAINTAINING DRAINAGE FLOWS SHALL BE INCLUDED IN THE CONTRACT UNIT PRICE FOR THE DRAINAGE ITEMS.

ALL UTILITIES, SCHOOL DISTRICTS, POST OFFICE, LOCAL POLICE, AND FIRE DEPARTMENTS SHALL BE NOTIFIED BY THE CONTRACTOR A MINIMUM OF 7 DAYS PRIOR TO THE START OF CONSTRUCTION.

WORK SHALL BE PERFORMED SO THAT ALL DRIVEWAYS SHALL BE ACCESSIBLE OR THAT THE CONTRACTOR PROVIDES RESIDENTS WITH PARKING ACCESS. THIS WORK THE CONTRACTOR SHALL COORDINATE WITH RESIDENTS.

PUBLIC SERVICES

SCHOOL DISTRICT	ALTON SCHOOL DISTRICT 550 LANDMARKS BLVD SUITE A ALTON, IL 62002 618.474.2600
POST OFFICE	UNITED STATES POSTAL SERVICE 400 TOLLE LANE GODFREY, IL 62035 618.466.3121
POLICE DEPARTMENT	MADISON COUNTY SHERIFF 405 RANDLE STREET EDWARDSVILLE, IL 62025 618.692.4433
FIRE DEPARTMENT	GODFREY FIRE PROTECTION DISTRICT 6011 GODFREY ROAD GODFREY, IL 62035 618.466.0131

COMMITMENTS

NONE

HIGHWAY STANDARDS

000001-08	STANDARD SYMBOLS, ABBREVIATIONS AND PATTERNS
280001-07	TEMPORARY EROSION CONTROL SYSTEMS
420001-10	PAVEMENT JOINTS
424001-12	PERPENDICULAR CURB RAMPS
424026-04	ENTRANCE ALLEY PEDESTRIAN CROSSING
604001-05	CONCRETE CURB TYPE B AND COMBINATION CONCRETE CURB AND GUTTER
606001-08	OFF-ROAD OPERATIONS, 2L, 2W, 15' (4.5 M) TO 24'' (600 MM) FROM PAVEMENT EDGE
701006-05	FRAMES AND LIDS TYPE 1
701301-04	LANE CLOSURE, 2L, 2W, SHORT TIME OPERATIONS
701311-03	LANE CLOSURE, 2 L, 2W, MOVING OPERATIONS - DAY ONLY
701501-06	URBAN LANE CLOSURE, 2L, 2W, UNDIVIDED
701801-06	SIDEWALK, CORNER OR CROSSWALK CLOSURE
701901-10	TRAFFIC CONTROL DEVICES
720001-01	SIGN PANEL MOUNTING DETAILS
720006-04	SIGN PANEL ERECTION DETAILS
720011-01	METAL POSTS FOR SIGNS, MARKERS & DELINEATORS
729001-01	APPLICATIONS OF TYPES A & B METAL POSTS (FOR SIGNS & MARKERS)
780001-05	TYPICAL PAVEMENT MARKINGS

UTILITIES

Name & Address of Utility	Type	Location
AT&T Kevin Urbanek OSP- Design Engineer ATO, Midwest C&E 160 W Division St, Maryville, IL 62062 618.346.6426 ku1285@att.com	overhead telephone	No conflict at this time.
Charter Communications Larry Saafr	overhead cable	No conflict at this time.
Village of Godfrey Rich Beran Village Engineer 618.466.4319 rberan@godfreyil.org	Storm sewer	Manhole to be adjusted STA 23+23.25
City of Brighton Craig Noble 217.828.2018 craig.noble@amwater.com	Potable water	No conflict.
Consolidated Communications Wes Chambers 217-235-3355 Wes.Chambers@consolidated.com	Fiber optic	No conflict at this time.
IL-American Water – Alton Cheryl Johnson 618-466-2131x3	Potable water, Sanitary sewer	No conflict at this time.
Ameren IP South Gas John Westerheide T 618-346-1245 C 618-407-0483 JWesterheide@ameren.com	Underground gasoline	No conflict at this time.
Ameren IP South Electric John Westerheide T 618-346-1245 C 618-407-0483 JWesterheide@ameren.com	overhead electric	No conflict at this time.
Level 3 Communications 877-366-8344x2 NationalRelo@centurylink.com	Fiber optic	No conflict at this time.
Sprint 708-955-6659 James.burton@erisson.com	Fiber optic	No conflict at this time.
Zayo/FNA 360 Networks Henry Klobucar 406-496-6510 Henry.klobucar@zayo.com	Fiber optic	No conflict at this time.

FILE NAME: S:\Projects\2017 Projects\417-00035-0HY Godfrey Pearl St\Design\LODD Sheets\08-sht-gennote.RR.dgn



USER NAME = CWRcox	DESIGNED CJW	REVISED -
MODEL NAME = Gen-01	DRAWN SA	REVISED -
PLOT SCALE = 0.3667' / in.	CHECKED LWJ	REVISED -
PLOT DATE = 11/14/2024	DATE -	REVISED -

STATE OF ILLINOIS
DEPARTMENT OF TRANSPORTATION

GENERAL NOTES, COMMITMENTS, HIGHWAY STANDARDS		
PEARL STREET		
SCALE:	SHEET 1 OF 1 SHEETS	

F.A.U. RTE.	SECTION	COUNTY	TOTAL SHEETS	SHEET NO.
8953	19-00032-02-SW	MADISON	14	2
		CONTRACT NO. 97789		
		ILLINOIS	FED. AID PROJECT	

CODE NO.	ITEM	UNIT	QUANTITY
20200100	EARTH EXCAVATION	CU YD	15
35100300	AGGREGATE BASE COURSE, TYPE A 4"	SQ YD	141
42000301	PORTLAND CEMENT CONCRETE PAVEMENT 8" (JOINTED)	SQ YD	72
42300200	PORTLAND CEMENT CONCRETE DRIVEWAY PAVEMENT, 6 INCH	SQ YD	47
42400100	PORTLAND CEMENT CONCRETE SIDEWALK 4 INCH	SQ FT	583
42400800	DETECTABLE WARNINGS	SQ FT	60
44000100	PAVEMENT REMOVAL	SQ YD	95
44000200	DRIVEWAY PAVEMENT REMOVAL	SQ YD	47
44000400	GUTTER REMOVAL	FOOT	60
44000600	SIDEWALK REMOVAL	SQ FT	47
60255800	MANHOLES TO BE ADJUSTED WITH NEW TYPE 1 FRAME, CLOSED LID	EACH	1
60605000	COMBINATION CONCRETE CURB AND GUTTER, TYPE B-6.24	FOOT	58
67100100	MOBILIZATION	L SUM	1
72400310	REMOVE SIGN PANEL - TYPE 1	SQ FT	2
72400600	RELOCATE SIGN PANEL ASSEMBLY - TYPE B	EACH	1
73500300	REMOVE AND RELOCATE GROUND MOUNTED SIGN SUPPORT	EACH	1
X6060505	CONCRETE CURB (SPECIAL)	FOOT	23

▪ =SPECIALTY ITEM



USER NAME	= cwr502x	DESIGNED	CJW	REVISED	-
MODEL NAME	= QUAM-01	DRAWN	SA	REVISED	-
PLOT SCALE	= 42.6667" / in.	CHECKED	LWJ	REVISED	-
PLOT DATE	= 9/5/2022	DATE	-	REVISED	-

**STATE OF ILLINOIS
DEPARTMENT OF TRANSPORTATION**

SUMMARY OF QUANTITIES PEARL STREET

SCALE: NTS	SHEET 1	OF 2	SHEETS
------------	---------	------	--------

F.A.U. RTE.	SECTION	COUNTY	TOTAL SHEETS	SHEET NO.
6953	19-00032-02-SW	MADISON	14	3
		CONTRACT NO. 97789		
		ILLINOIS	FED. AID PROJECT	

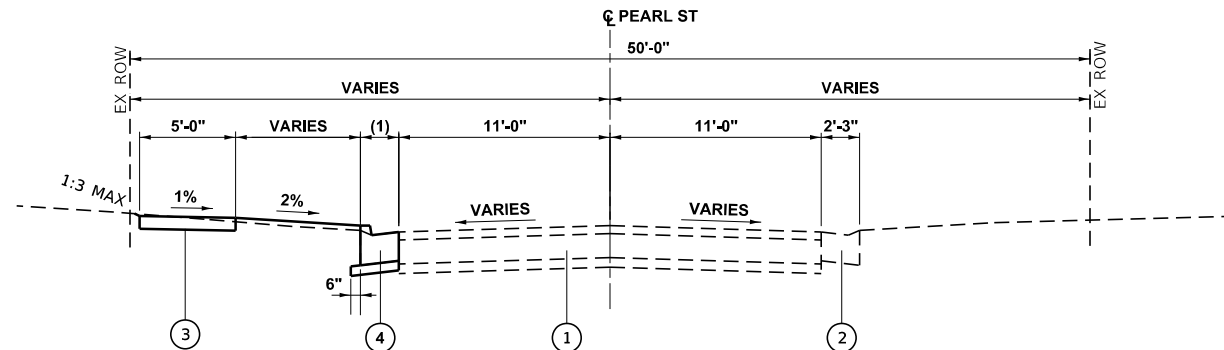
FILE NAME: S:\Projects\2017 Projects\417-0035-04Y Godfrey Pearl St\Design\CA0D Sheets\08-sht-quantities-RR.dgn

CODE NO.	ITEM	UNIT	QUANTITY
X7010216	TRAFFIC CONTROL AND PROTECTION, (SPECIAL)	L SUM	1
Z0013798	CONSTRUCTION LAYOUT	L SUM	1
Z0048665	RAILROAD PROTECTIVE LIABILITY INSURANCE	L SUM	1

• =SPECIALTY ITEM

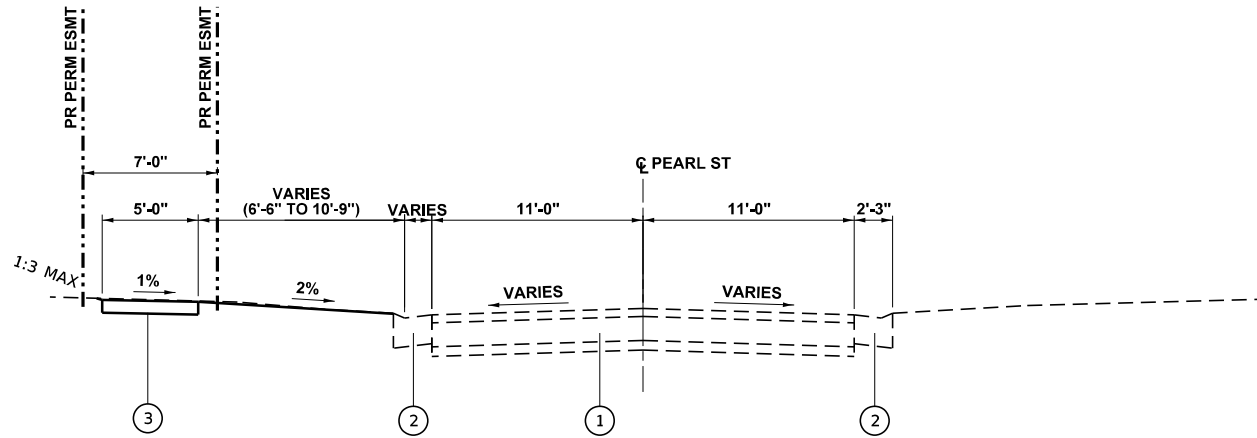
FILE NAME: S:\Projects\2017 Projects\17-0035-01Y Goffrey Fee-1 S&D Design\CHDD Sheets\08-qty-quantities.BR.dgn

 <div>431 N. 35th Street, Suite 200 St. Louis, MO 63121 PH: 314.621.3100</div>	USER NAME = cwlccox	DESIGNED CJW	REVISED -	STATE OF ILLINOIS DEPARTMENT OF TRANSPORTATION	SUMMARY OF QUANTITIES PEARL STREET			FAU. RTE.	SECTION	COUNTY	TOTAL SHEETS	SHEET NO.
	MODEL NAME = QUAN-02	DRAWN SA	REVISED -					8953	19-00032-02-SW	MADISON	14	4
	PLOT SCALE = 42.6667' / in.	CHECKED LWJ	REVISED -		SCALE: NTS			SHEET 2 OF 2 SHEETS			CONTRACT NO. 97789	
	PLOT DATE = 9/15/2022	DATE -	REVISED -					ILLINOIS FED. AID PROJECT				



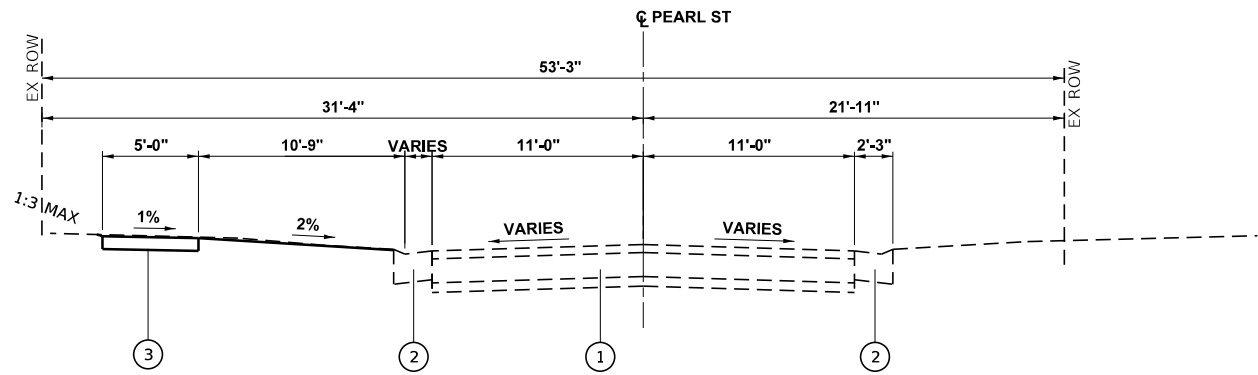
PROPOSED TYPICAL SECTION

STA 21+64.00 TO STA 21+68.34



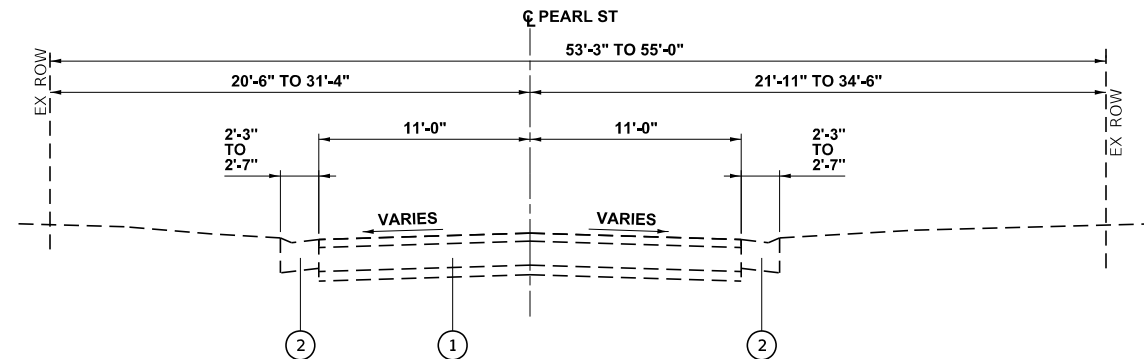
PROPOSED TYPICAL SECTION

STA 21+68.34 TO STA 23+28.65



PROPOSED TYPICAL SECTION

STA 23+28.65 TO STA 23+55.83



EXISTING TYPICAL SECTION

STA 21+64.00 TO STA 23+55.83

LEGEND

- 1) EXISTING HMA/CONCRETE PAVEMENT
- 2) EXISTING CONCRETE GUTTER/CURB & GUTTER
- 3) PROPOSED PORTLAND CEMENT CONCRETE SIDEWALK, 4"
- 4) PROPOSED CONCRETE COMBINATION CURB AND GUTTER, TYPE B-6.24
PROPOSED AGGREGATE BASE COURSE, TYPE A 4"

NOTES:

- 1) TRANSITION WIDTH BETWEEN EXISTING DEPRESSED CURB AND GUTTER AND PROPOSED CURB AND GUTTER, TYPE B-6.24

FILE NAME: S:\Projects\2017 Projects\417-00035-0HY Godfrey Pearl St\Design\CADD Sheets\08-shr-Typical&PR.dgn



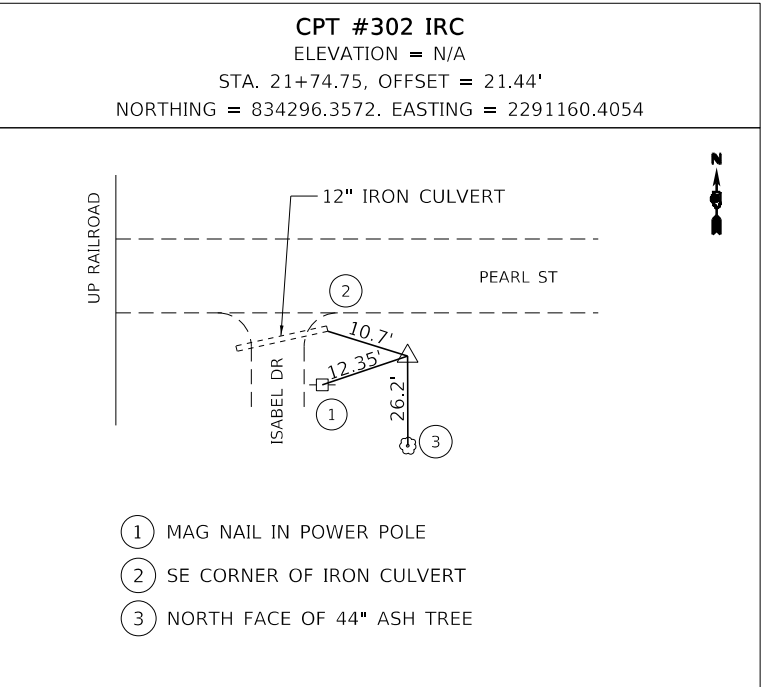
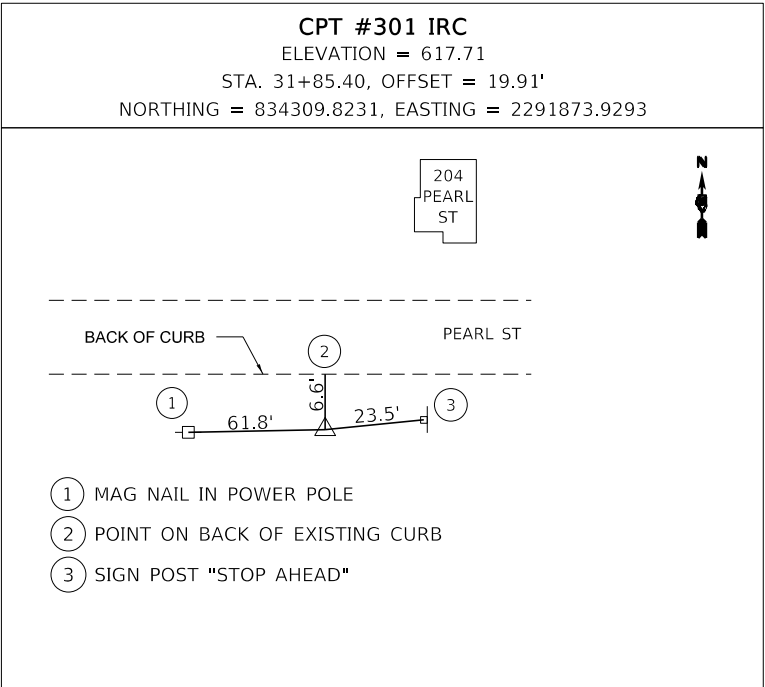
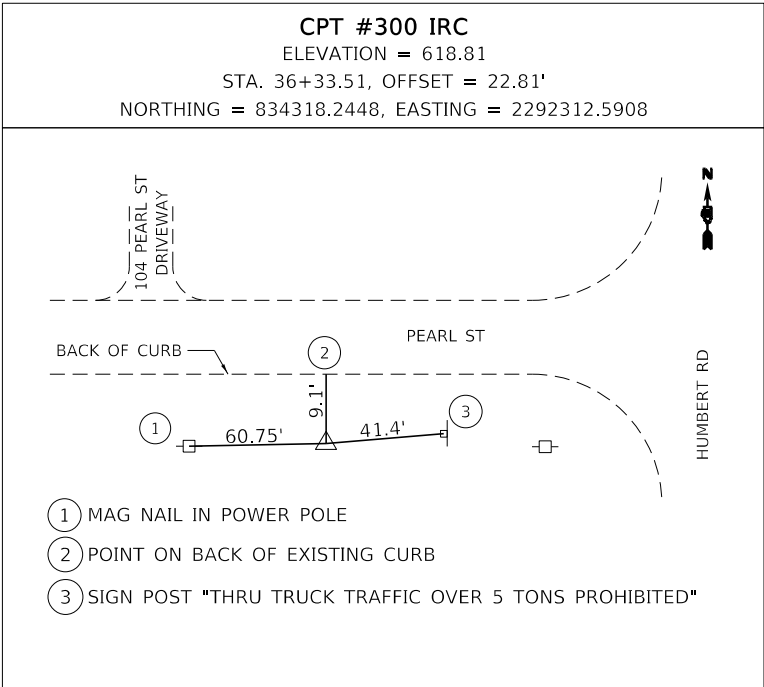
USER NAME = CJW/cx	DESIGNED CJW	REVISED -
MODEL NAME = Typ-01	DRAWN SA	REVISED -
PLOT SCALE = 10.0000" / in.	CHECKED LWJ	REVISED -
PLOT DATE = 11/14/2024	DATE -	REVISED -

STATE OF ILLINOIS
DEPARTMENT OF TRANSPORTATION

TYPICAL SECTIONS
PEARL STREET

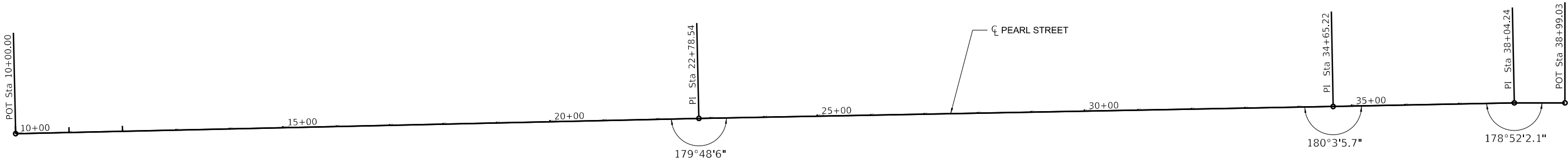
SCALE: N.T.S. SHEET 1 OF 1 SHEETS

F.A.U. RTE.	SECTION	COUNTY	TOTAL SHEETS	SHEET NO.
8953	19-00032-02-SW	MADISON	14	5
CONTRACT NO. 97789				
ILLINOIS FED. AID PROJECT				



BENCHMARKS		
MONUMENT	ELEVATION	DESCRIPTION
BM 1	621.57'	SET RAILROAD SPIKE IN THE NORTH FACE OF THE 4TH POWER POLE WEST OF HUMBERT ROAD ON THE SOUTH SIDE OF PEARL STREET. POLE TAG #8048021

PR PEARL STREET			
POINT	STATION	NORTHING	EASTING
POT	10+00.00	834,264.1622	2,289,689.0120
PI	22+78.54	834,292.7115	2,290,967.2318
PI	34+65.22	834,315.1030	2,292,153.6970
PI	38+04.24	834,321.8052	2,292,492.6523
PI	38+99.03	834,321.8052	2,292,587.4416



FILE NAME: S:\Projects\2017 Projects\417-0035-0HY Godfrey Pearl St\Design\CADD Sheets\08-sht-ATB-RR.dgn



USER NAME	= cwlcdx
MODEL NAME	= ATB-01
PLOT SCALE	= 200.0000 ' / in.
PLOT DATE	= 9/15/2022

DESIGNED	CJW
DRAWN	SA
CHECKED	LWJ
DATE	-

REVISED	-
REVISED	-
REVISED	-
REVISED	-

STATE OF ILLINOIS
DEPARTMENT OF TRANSPORTATION

ALIGNMENT, TIES AND BENCHMARKS
PEARL STREET

SCALE: N.T.S.

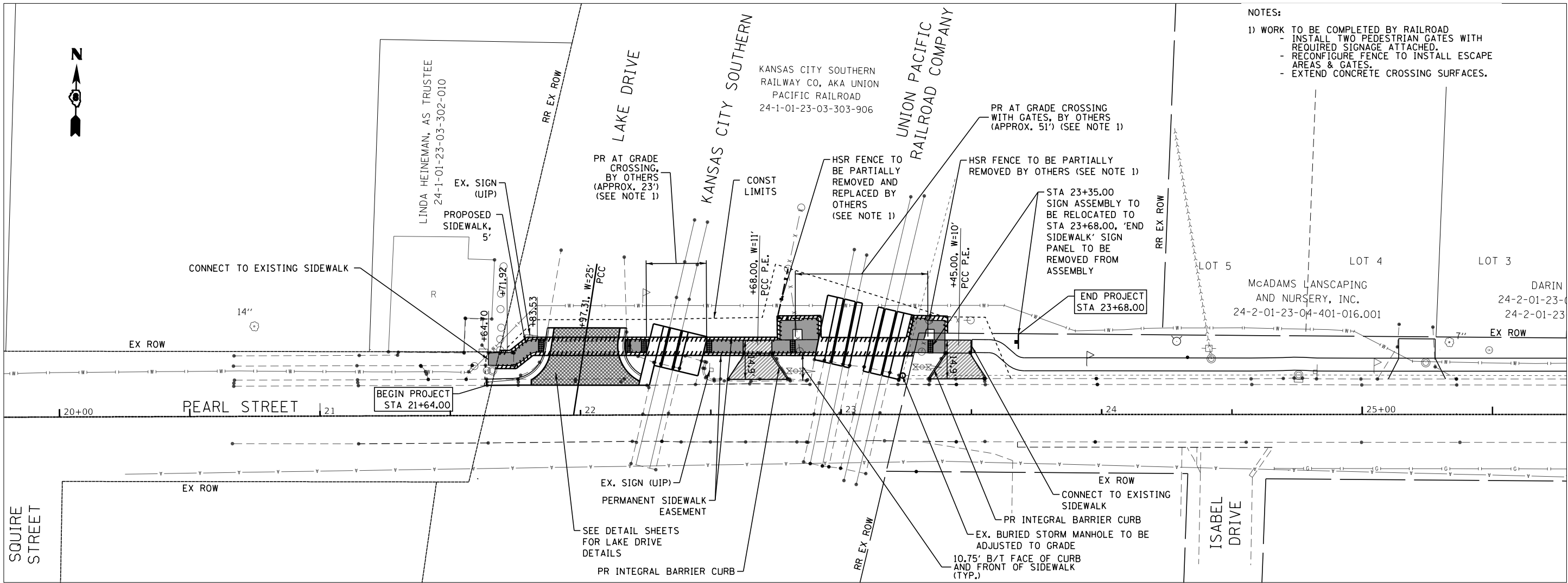
SHEET 1 OF 1 SHEETS

F.A.U. RTE.	SECTION	COUNTY	TOTAL SHEETS	SHEET NO.
8953	19-00032-02-SW	MADISON	14	6
CONTRACT NO. 97789				
ILLINOIS FED. AID PROJECT				

PLAN	DATE	BY
SURVEYED		
PLOTTED		
ALIGNED		
DESIGNED		
NO.		

PROFILE	DATE	BY
SURVEYED		
PLOTTED		
GRADES CHECKED		
NO.		

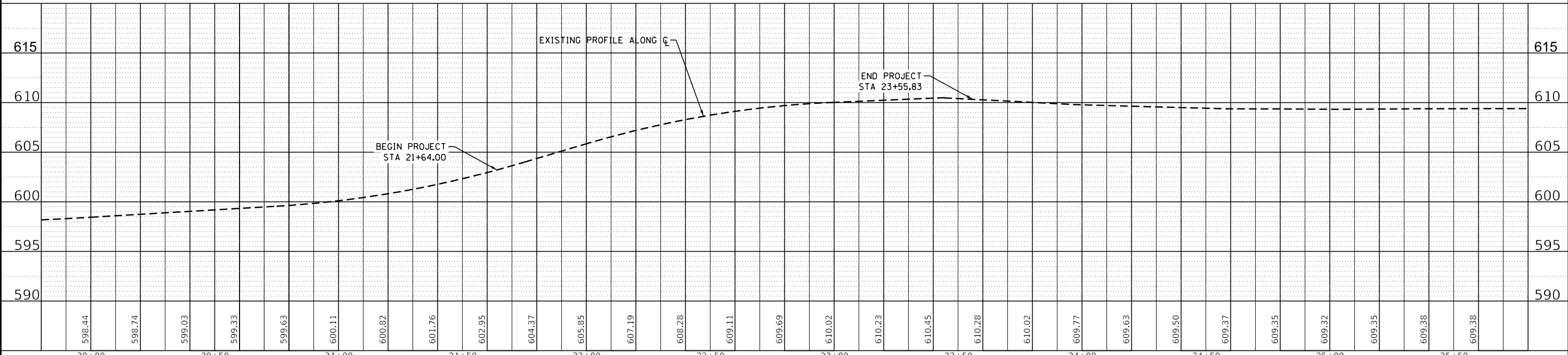
FILE NAME: S:\Projects\2017 Projects\417-20035-001Y Godfrey Pearl St Design\CA00 Sheets\08-sht-pln-prf-Pearl-RR.dgn



PORTLAND CEMENT CONCRETE PAVEMENT 8" JOINTED
AGG BASE COURSE, 4"

PORTLAND CEMENT CONCRETE DRIVEWAY PAVEMENT, 6"
AGG BASE COURSE, 4"

PORTLAND CEMENT CONCRETE SIDEWALK, 4"
AGG BASE COURSE, 4"



USER NAME: cmlcox	DESIGNED: CJW	REVISED: -
MODEL NAME: PP-01	DRAWN: CJW	REVISED: -
PLOT SCALE: 400000' / in	CHECKED: LWJ	REVISED: -
PLOT DATE: 9/15/2022	DATE: -	REVISED: -

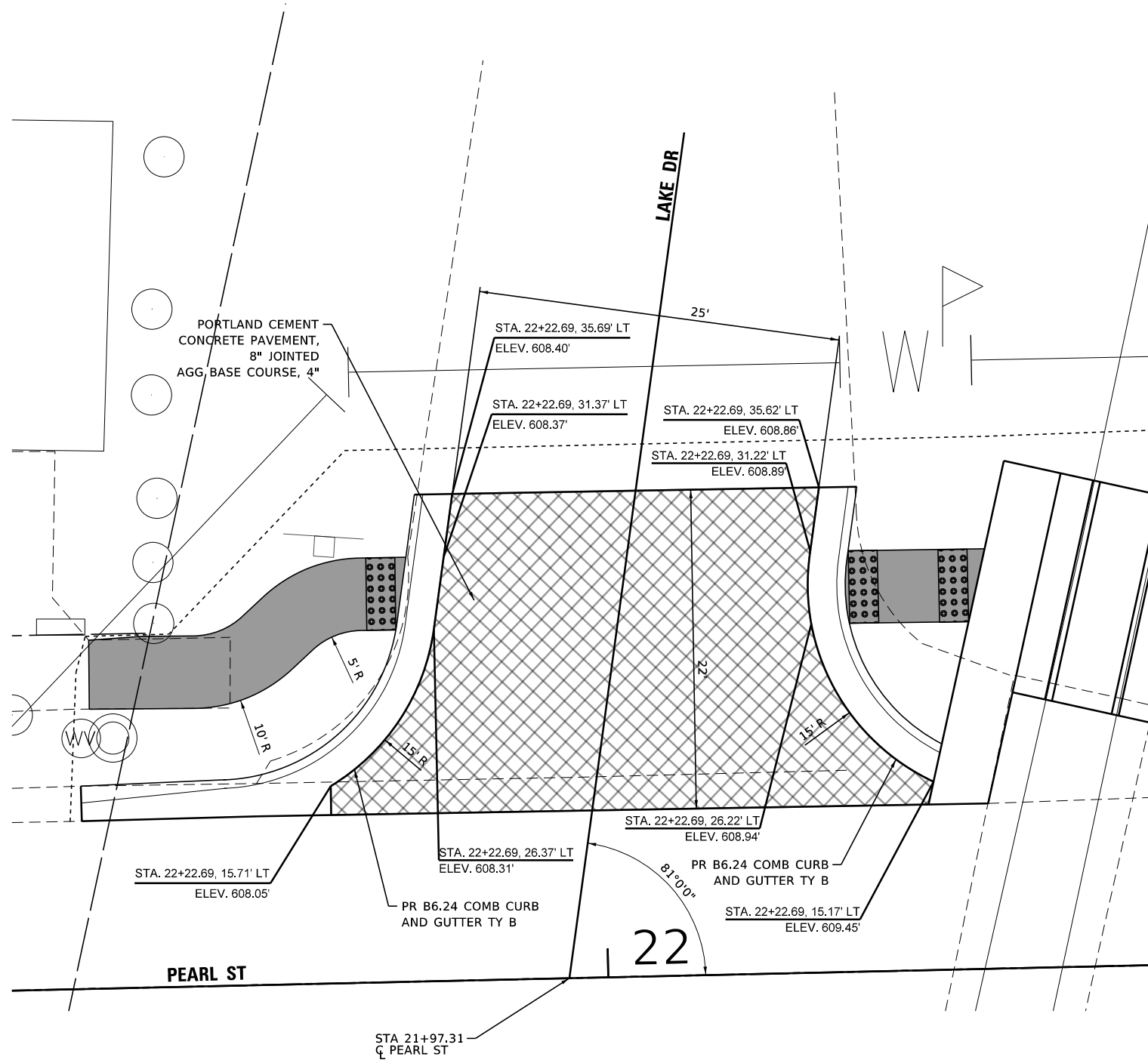
STATE OF ILLINOIS
DEPARTMENT OF TRANSPORTATION

PEARL STREET PLAN & PROFILE SHEETS			
SCALE: 1:20	SHEET 1	OF 1	SHEETS

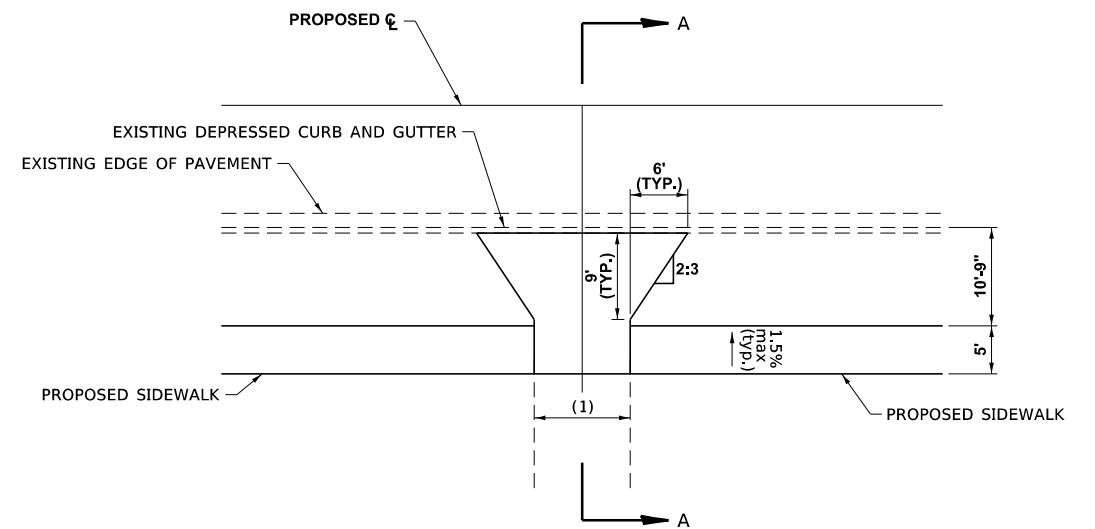
F.A.U. RTE.	SECTION	COUNTY	TOTAL SHEETS	SHEET NO.
8953	19-00032-02-SW	MADISON	14	7
CONTRACT NO. 97789				

ILLINOIS FED. AID PROJECT

FILE NAME: S:\Projects\2017 Projects\417-00035-0HY Godfrey Pearl St\Design\cadd Sheets\08-sht-Details_BB.dgn

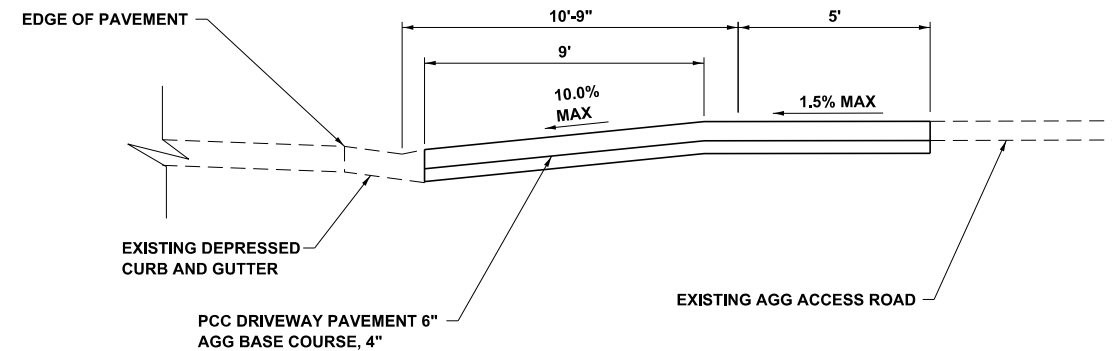


LAKE DRIVE DETAIL

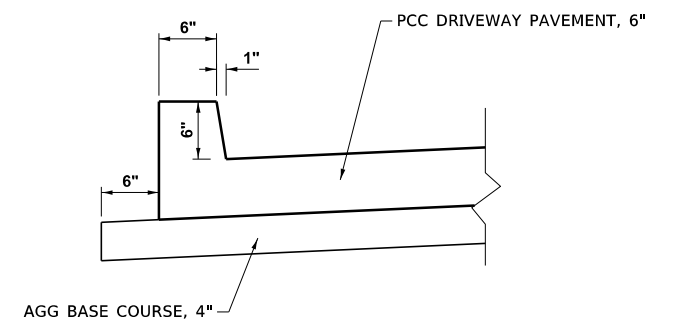


PRIVATE ENTRANCE DETAIL A (N.T.S.)

ENTRANCES AT STA 22+68.00 AND STA 23+45.00
(1) 11' AT STA 22+68.00, 10' AT STA 23+45.00



SECTION A-A



INTEGRAL BARRIER CURB DETAIL (N.T.S.)



USER NAME = cwillcox
MODEL NAME = DETAIL-01
PLOT SCALE = 10.0000" / IN.
PLOT DATE = 9/15/2022

DESIGNED CJW
DRAWN SA
CHECKED LWJ
DATE -

REVISED -
REVISED -
REVISED -
REVISED -

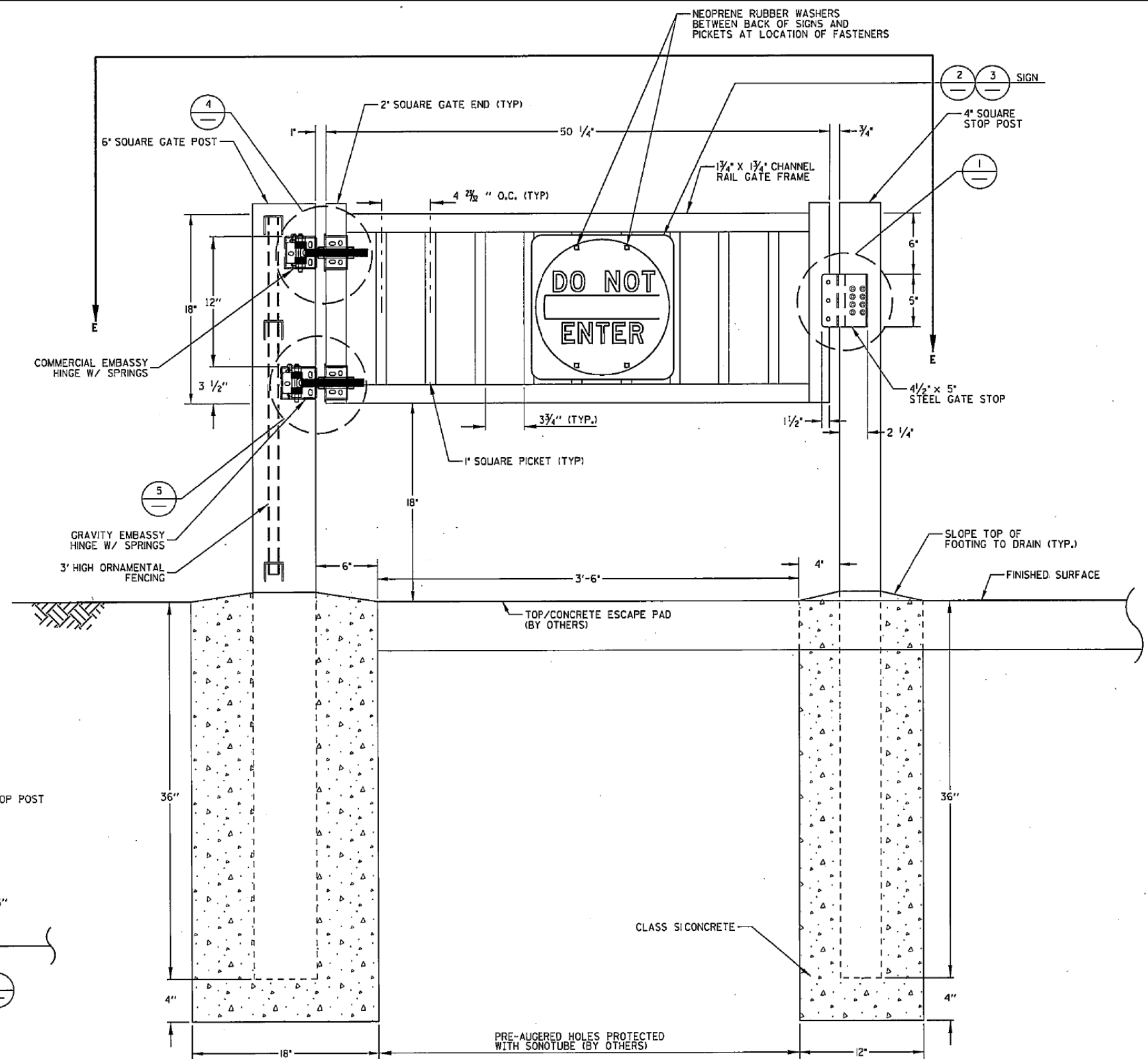
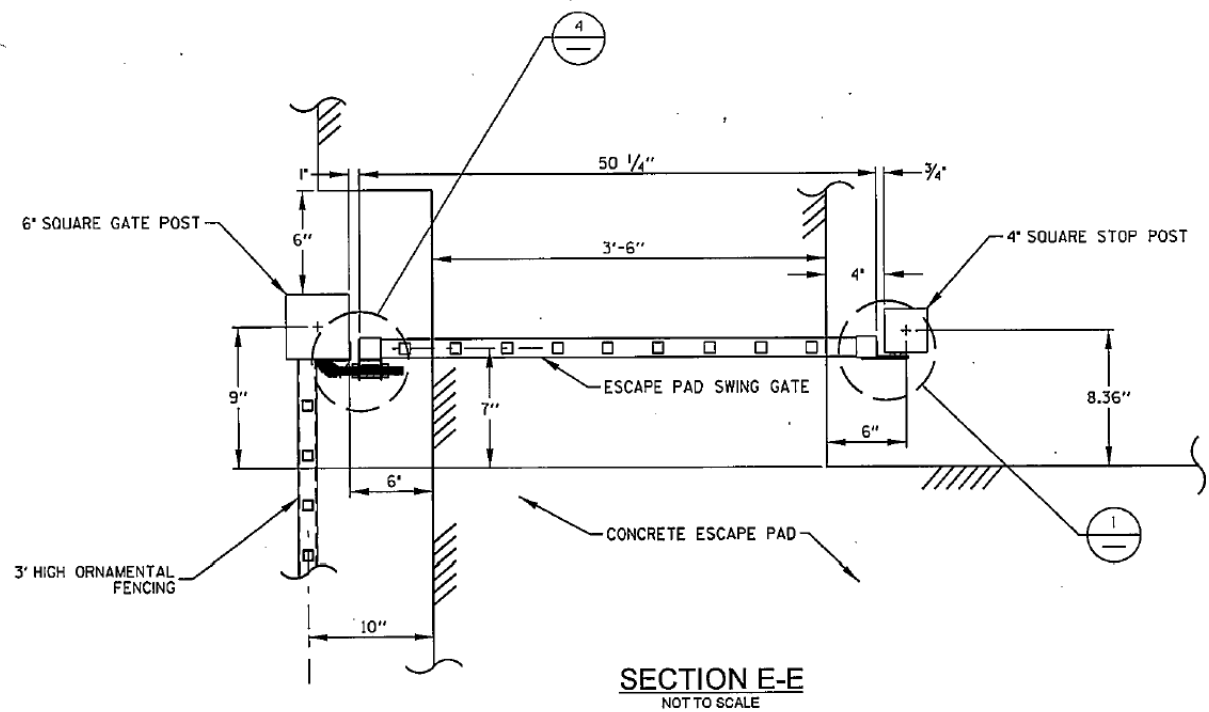
STATE OF ILLINOIS
DEPARTMENT OF TRANSPORTATION

DETAILS
PEARL STREET

SCALE: N.T.S.

SHEET 1 OF 7 SHEETS

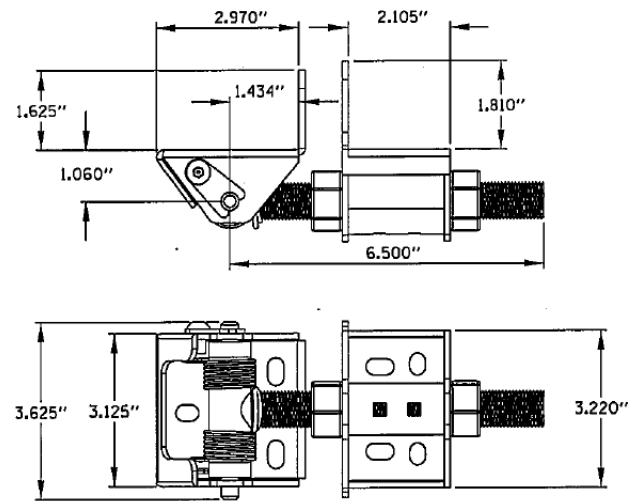
F.A.U. RTE.	SECTION	COUNTY	TOTAL SHEETS	SHEET NO.
8953	19-00032-02-SW	MADISON	14	8
CONTRACT NO. 97789				
ILLINOIS FED. AID PROJECT				



NOTE: A RIGHT HAND (RH) ESCAPE PAD SWING GATE IS DEPICTED HEREIN. A LEFT HAND (LH) ESCAPE PAD SWING GATE TO BE THE OPPOSITE OF THAT WHICH IS SHOWN.

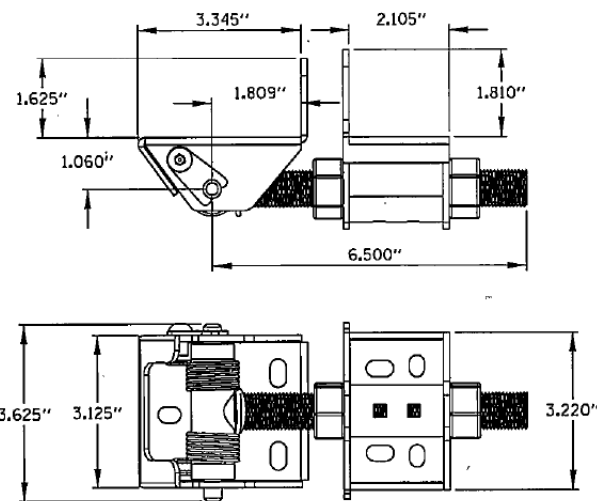
* DETAILS SHOWN ON THIS PAGE
ARE FOR INFORMATION ONLY -
WORK TO BE DONE BY OTHERS.

ESCAPE PAD SWING GATE DETAILS (LOOKING TOWARD TRACK)
NOT TO SCALE



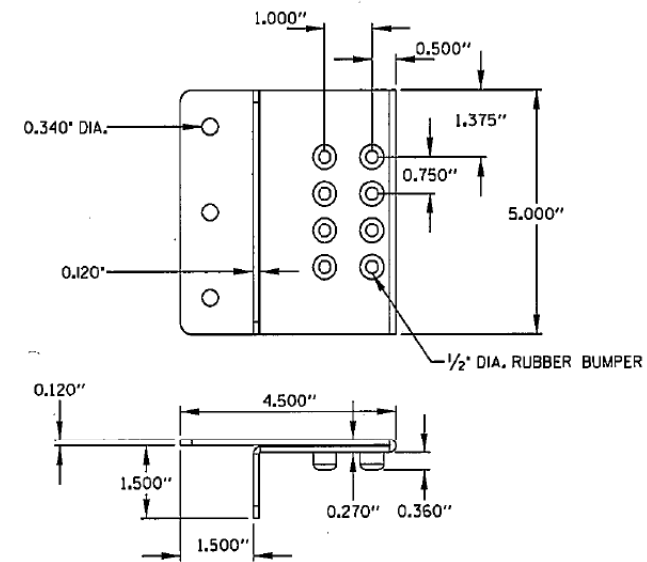
4 COMMERCIAL EMBASSY HINGE W/ SPRINGS DETAIL
NOT TO SCALE

PROPRIETARY AND CONFIDENTIAL
THE INFORMATION CONTAINED IN THIS DRAWING IS THE SOLE PROPERTY OF MODERN FENCE TECHNOLOGIES. ANY REPRODUCTION IN PART OR AS A WHOLE WITHOUT THE WRITTEN PERMISSION OF MODERN FENCE TECHNOLOGIES IS PROHIBITED.



5 GRAVITY EMBASSY HINGE W/ SPRINGS DETAIL
NOT TO SCALE

PROPRIETARY AND CONFIDENTIAL
THE INFORMATION CONTAINED IN THIS DRAWING IS THE SOLE PROPERTY OF MODERN FENCE TECHNOLOGIES. ANY REPRODUCTION IN PART OR AS A WHOLE WITHOUT THE WRITTEN PERMISSION OF MODERN FENCE TECHNOLOGIES IS PROHIBITED.



6 STEEL GATE STOP DETAIL
NOT TO SCALE

PROPRIETARY AND CONFIDENTIAL
THE INFORMATION CONTAINED IN THIS DRAWING IS THE SOLE PROPERTY OF MODERN FENCE TECHNOLOGIES. ANY REPRODUCTION IN PART OR AS A WHOLE WITHOUT THE WRITTEN PERMISSION OF MODERN FENCE TECHNOLOGIES IS PROHIBITED.

* DETAILS SHOWN ON THIS PAGE
ARE FOR INFORMATION ONLY -
WORK TO BE DONE BY OTHERS.

FILE NAME: S:\Projects\2017 Projects\417-00035-0HY Godfrey Pearl St\Design\CAD Sheets\08-shd-Details_BB.dgn



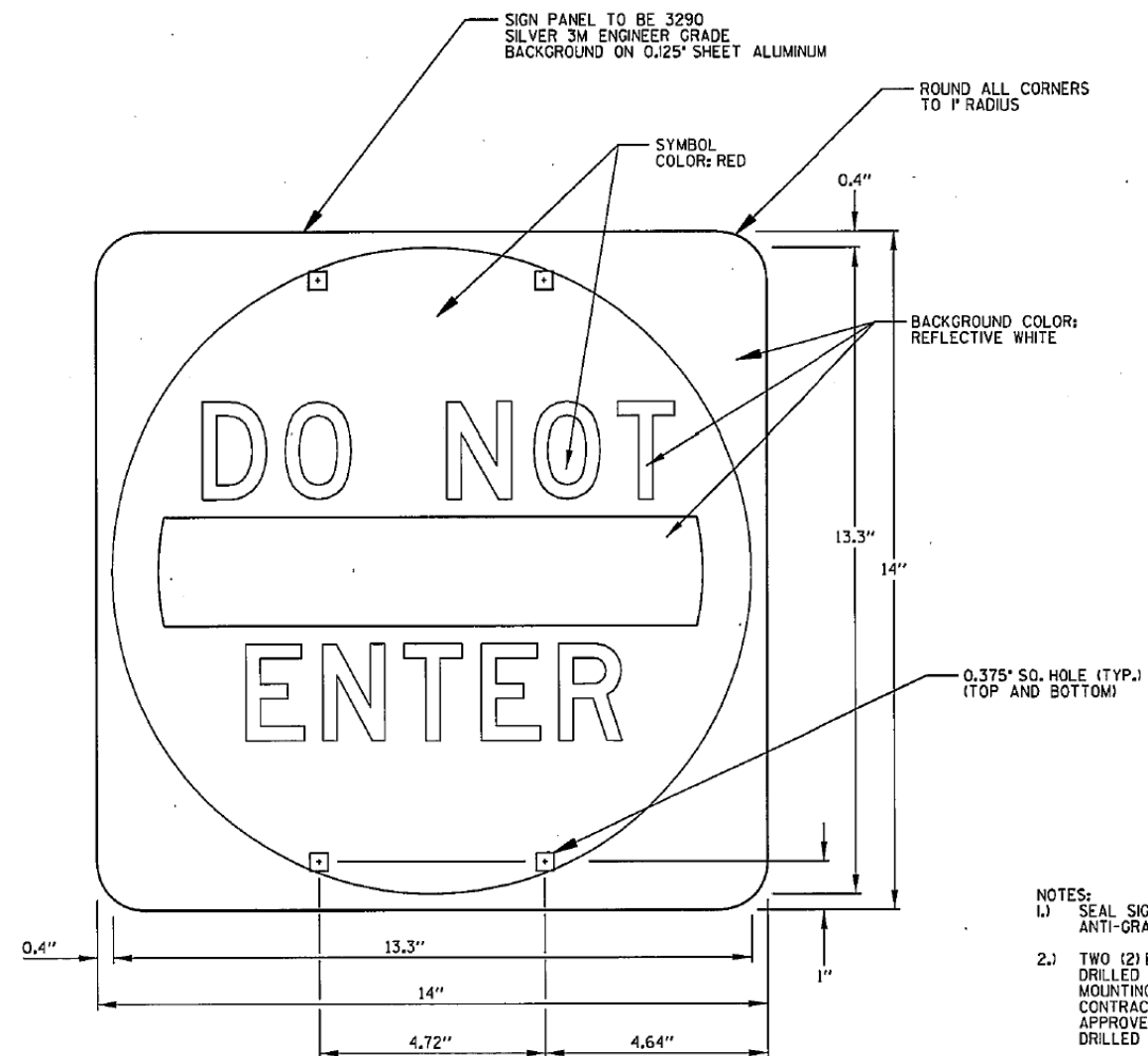
USER NAME = cwillcox	DESIGNED CJW	REVISED -
MODEL NAME = DETAIL-04	DRAWN SA	REVISED -
PLOT SCALE = 10.0000" / in.	CHECKED LWJ	REVISED -
PLOT DATE = 9/15/2022	DATE -	REVISED -

STATE OF ILLINOIS
DEPARTMENT OF TRANSPORTATION

DETAILS
PEARL STREET

SCALE: NTS SHEET 4 OF 7 SHEETS

FAU. RTE.	SECTION	COUNTY	TOTAL SHEETS	SHEET NO.
8953	19-00032-02-SW	MADISON	14	11
CONTRACT NO. 97789				
ILLINOIS FED. AID PROJECT				

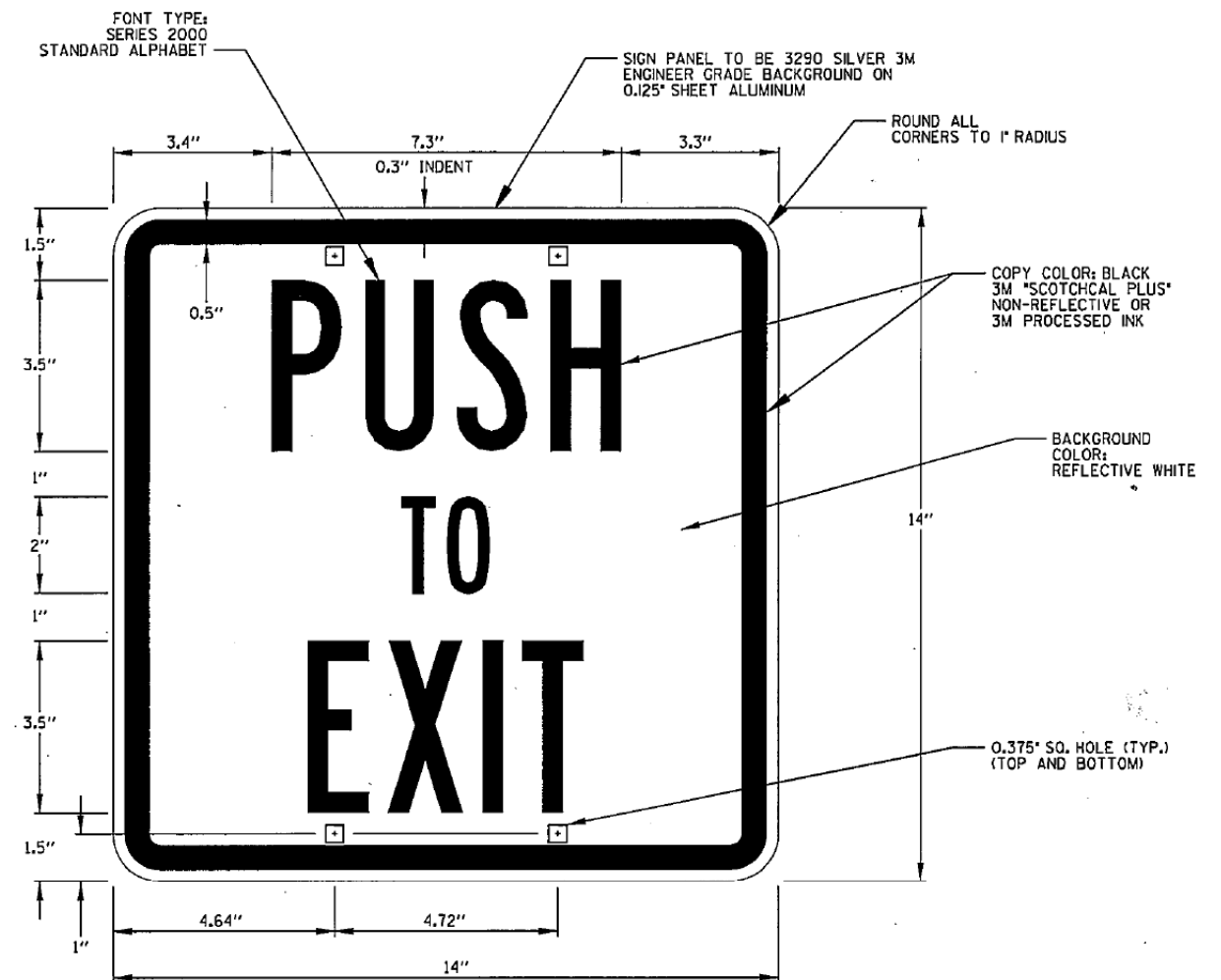


R5-ISTD & MIN;
1.0" Radius, No border, White;
Table of distances between letter and object lefts.

0.4	13.3	0.3
-----	------	-----

- NOTES:
- 1.) SEAL SIGNS WITH TRANSPARENT ANTI-GRAFFITI FILM
 - 2.) TWO (2) EACH PICKETS TO BE DRILLED WITH TWO (2) HOLES EACH FOR MOUNTING TAMPER-PROOF FASTENERS. CONTRACTOR TO APPLY ENGINEER APPROVED SURFACE COATING PRODUCT TO DRILLED HOLES.
 - 3.) SIGNS TO BE MOUNTED BACK TO BACK WITH FOUR (4) TAMPER-PROOF STAINLESS STEEL ONE-WAY FASTENERS. ENGINEER APPROVED NEOPRENE WASHERS TO BE PLACED BETWEEN SIGN SURFACES AND PICKETS PRIOR TO INSTALLATION OF FASTENERS.

* DETAILS SHOWN ON THIS PAGE
ARE FOR INFORMATION ONLY -
WORK TO BE DONE BY OTHERS.



1.0" Radius, 0.5" Border, 0.3" Indent, Black on White;
 PUSH B 75% spacing;
 TO B 75% spacing;
 EXIT B 75% spacing;
 Table of distances between letter and object lefts.

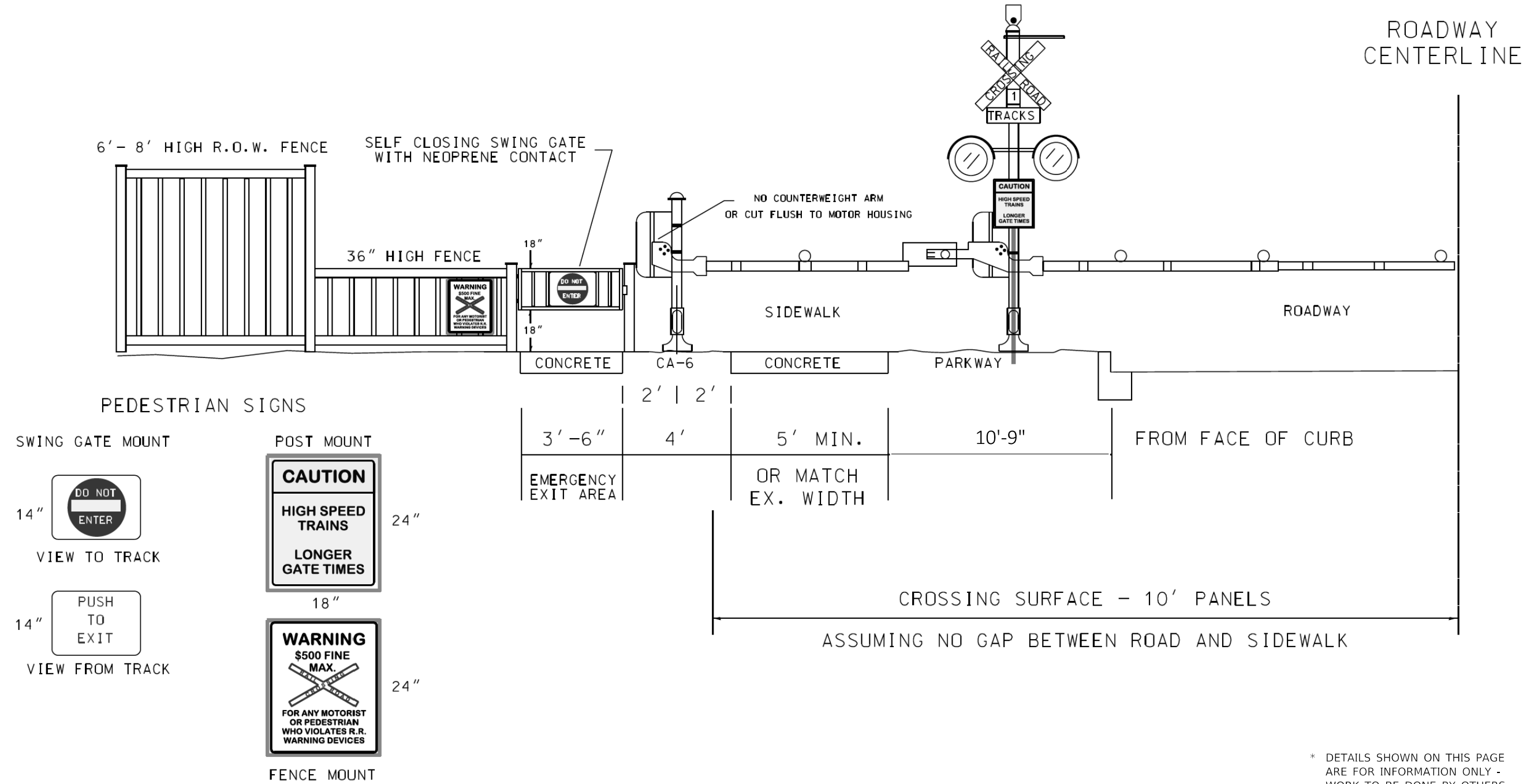
	P	U	S	H	
3.4	1.9	2.0	1.9	1.5	3.3

6.0	1.0	1.0	6.0
-----	-----	-----	-----

	E	X	I	T	
4.1	1.6	2.1	0.9	1.3	4.0

ESCAPE PAD SWING GATE SIGN (LOOKING AWAY FROM TRACK)
NOT TO SCALE

PEDESTRIAN VIEW AT EXIT GATE - TRAIN APPROACH
CROSS SECTION (NTS)



* DETAILS SHOWN ON THIS PAGE
ARE FOR INFORMATION ONLY -
WORK TO BE DONE BY OTHERS.

FILE NAME: S:\Projects\2017 Projects\417-00035-0HY Godfrey Pearl St\Design\CAD Sheets\08-shd-Details_RR.dgn



USER NAME = cwillcox	DESIGNED CJW	REVISED -
MODEL NAME = DETAIL-06	DRAWN SA	REVISED -
PLOT SCALE = 10.0000" / in.	CHECKED LWJ	REVISED -
PLOT DATE = 9/15/2022	DATE -	REVISED -

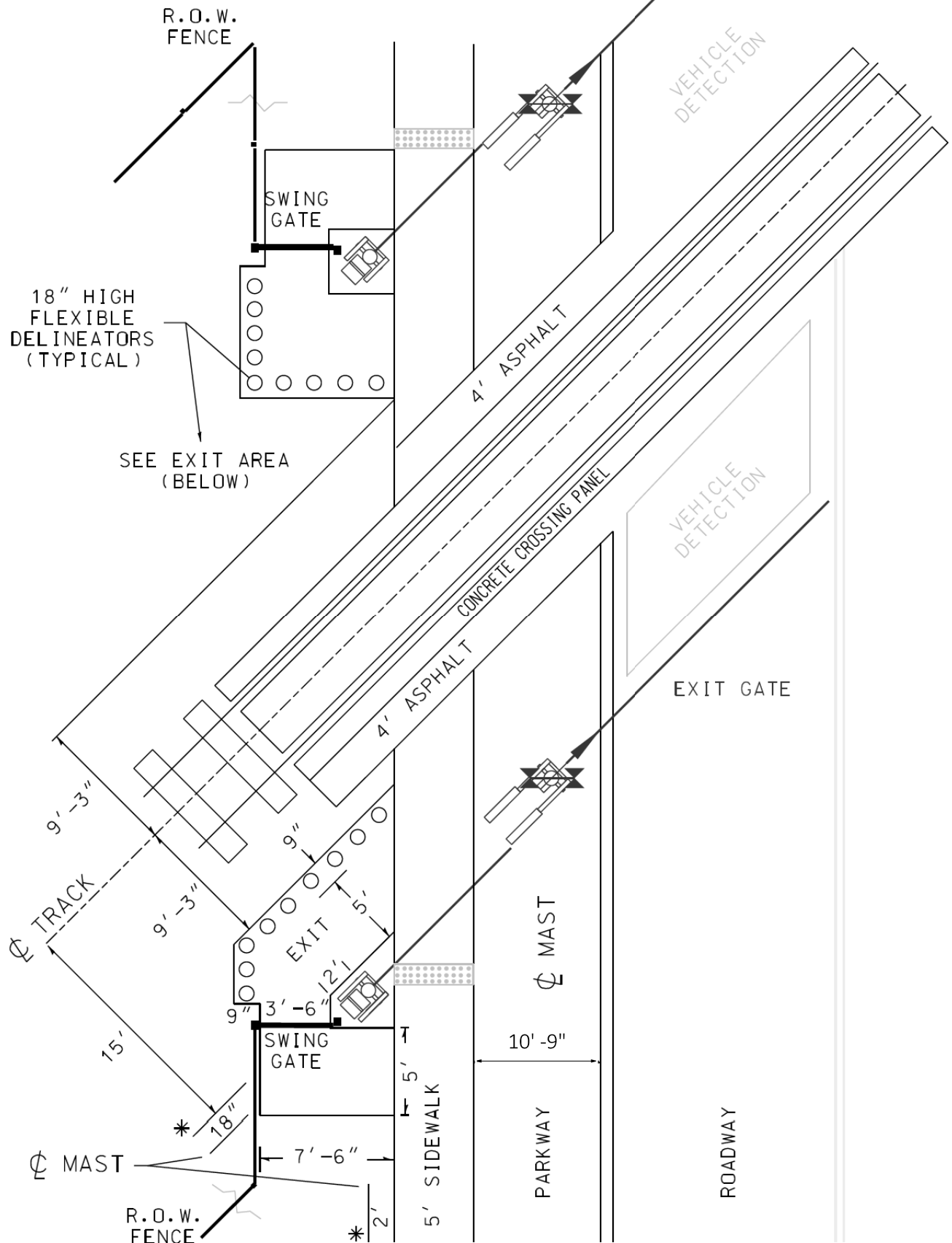
STATE OF ILLINOIS
DEPARTMENT OF TRANSPORTATION

DETAILS PEARL STREET	
SCALE: NTS	SHEET 6 OF 7 SHEETS

FA.U. RTE.	SECTION	COUNTY	TOTAL SHEETS	SHEET NO.
8953	19-00032-02-SW	MADISON	14	13
CONTRACT NO. 97789				
ILLINOIS FED. AID PROJECT				

CROSSING SKEW 45 TO 89 DEGREES

PLAN VIEW
(NTS)



RECOMMENDED CONSTRUCTION SEQUENCE - WARNING DEVICES INSTALLED FIRST, PARALLEL TO TRACKS

1. LOCATE ROADWAY GATE 15 FT FROM CENTERLINE OF TRACK
2. CONDUIT (2) TO ACCOMMODATE ROADWAY AND PEDESTRIAN GATES
3. LAYOUT SIDEWALK
 - A. ALLOW CLEARANCE FROM ROADWAY COUNTERWEIGHTS AND ARMS
 - B. 4'-6" CENTERLINE FOUNDATION TO END OF COUNTERWEIGHTS
 - C. 18" CENTERLINE FOUNDATION TO OUTER ARMS
4. LOCATE PEDESTRIAN GATE 16'-6" FROM CENTERLINE OF TRACK
 - A. ALLOW CLEARANCE FOR GATE ARM BRACKET (24" FOUNDATION CENTERLINE TO SIDEWALK - TYPICAL)
 - B. LOCATE BACK OF MECHANISM/DOOR - 2' FROM FOUNDATION CENTERLINE
 - C. USE PEDESTRIAN GATE MECH WITHOUT COUNTERWEIGHT ARM, OR CUT FLUSH TO MOTOR HOUSING TO ELIMINATE CONFLICT WITH SWING GATE
 - D. INSTALL SONOTUBE FOR SWING GATE CONTACT POST TO ELIMINATE POTENTIAL DAMAGE TO SIGNAL CABLE DURING FENCE INSTALLATION
5. LAYOUT EXIT AREA; FRAME AND POUR SIDEWALK AND EXIT AREA
 - A. PROVIDE 3'-6" x 4' CA-6 "ISLAND"
 - B. * USE CENTERLINE OF PED GATE MAST TO LOCATE EXIT EDGES *
6. INSTALL SWING GATE MINIMIZING GAPS TO PED. GATE. ENSURE GATE HOUSING OPENS
7. INSTALL 18" DELINEATORS - TRACK SIDE EXIT AREA (IN 9" PERIMETER EXTENSION)
8. COMPLETE R/W FENCE AND CONNECTIONS TO SWING GATE
9. ADJUST HINGES AND GATE CLOSER TO ALLOW PROPER OPERATION
10. CHECK 16'-6" ALONG PEDESTRIAN GATE FROM TRACK CENTERLINE FOR PARALLEL

* DETAILS SHOWN ON THIS PAGE
ARE FOR INFORMATION ONLY -
WORK TO BE DONE BY OTHERS.

FILE NAME: S:\Projects\2017 Projects\417-00035-0HY Godfrey Pearl St\Design\4000 Sheets\08-shr-Detail-RR.dgn



USER NAME	= cwillcox
MODEL NAME	= DETAIL-07
PLOT SCALE	= 10,0000" / in.
PLOT DATE	= 9/15/2022

DESIGNED	CJW
DRAWN	SA
CHECKED	LWJ
DATE	-

REVISED	-
REVISED	-
REVISED	-
REVISED	-

STATE OF ILLINOIS
DEPARTMENT OF TRANSPORTATION

DETAILS
PEARL STREET

SCALE: NTS SHEET 7 OF 7 SHEETS

FA.U. RTE.	SECTION	COUNTY	TOTAL SHEETS	SHEET NO.
8953	19-00032-02-SW	MADISON	14	14
CONTRACT NO. 97789				
ILLINOIS FED. AID PROJECT				