

STATE OF ILLINOIS  
DEPARTMENT OF TRANSPORTATION

F.A.I. RTE.	SECTION	COUNTY	TOTAL SHEETS	SHEET NO.
80	2024-1038-I	ILLINOIS	5	1
CONTRACT NO. 62X81			* COOK, WILL	

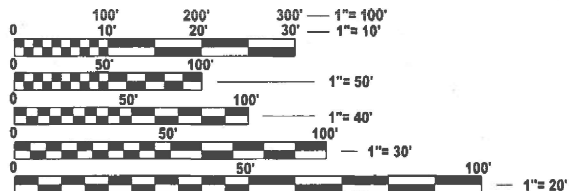
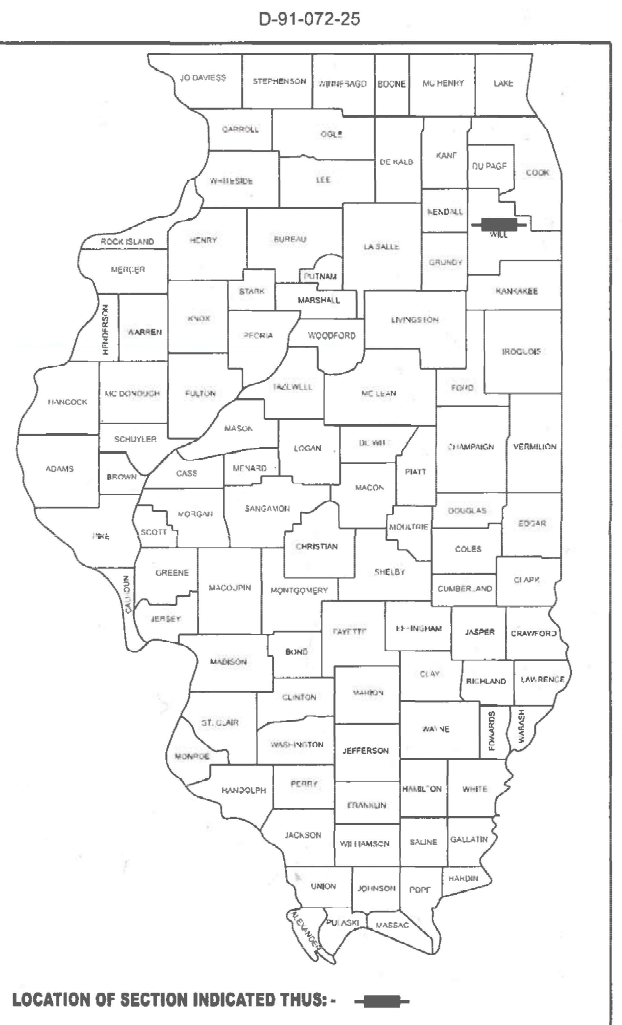
FOR INDEX OF SHEETS, SEE SHEET NO. 2

PROPOSED  
HIGHWAY PLANS

FAI ROUTE 80 (I-80)  
I-294 TO KENDALL COUNTY LINE  
SECTION 2024-1038-I

EXPRESSWAY HIGHWAY CLEANING (LITTER / DEBRIS REMOVAL)  
WILL AND COOK COUNTY

C-91-093-25



FULL SIZE PLANS HAVE BEEN PREPARED USING STANDARD  
ENGINEERING SCALES. REDUCED SIZED PLANS WILL NOT  
CONFORM TO STANDARD SCALES. IN MAKING MEASUREMENTS  
ON REDUCED PLANS, THE ABOVE SCALES MAY BE USED.

J.U.L.I.E.  
JOINT UTILITY LOCATION INFORMATION FOR EXCAVATION  
1-800-892-0123  
OR 811

PROJECT ENGINEER: OSCAR OLIVEROS (847) 705-4548  
PROJECT MANAGER: JACEK EJMONT (847) 705-4641

CONTRACT NO. 62X81

LOCATION MAP - SEE INDEX OF SHEETS

GROSS LENGTH = 185,856 FT. = 35.2 MILE  
NET LENGTH = 185,856 FT. = 35.2 MILE

STATE OF ILLINOIS  
DEPARTMENT OF TRANSPORTATION

SUBMITTED Oct 21, 2024 1R  
James J. Jones REGIONAL ENGINEER

December 6, 2024  
Scott A. Etkin ENGINEER OF DESIGN AND ENVIRONMENT

December 6, 2024  
James J. Jones DIRECTOR OF HIGHWAYS PROJECT IMPLEMENTATION<sup>13</sup>

PRINTED BY THE AUTHORITY  
OF THE STATE OF ILLINOIS

INDEX OF SHEETS

- 1. TITLE SHEET
- 2. INDEX OF SHEETS  
APPLICABLE STATE STANDARDS
- 3. GENERAL NOTES, SUMMARY OF QUANTITIES, &  
TYPICAL EXPRESSWAY CROSS-SECTIONS
- 4. EXPRESSWAY CLEANING MAP: I-80 (I-294 TO KENDALL CO LINE)
- 5. TRAFFIC CONTROL DETAILS FOR FREEWAY SHOULDER CLOSURES  
AND PARTIAL RAMP CLOSURES (TC-17)

STATE STANDARDS

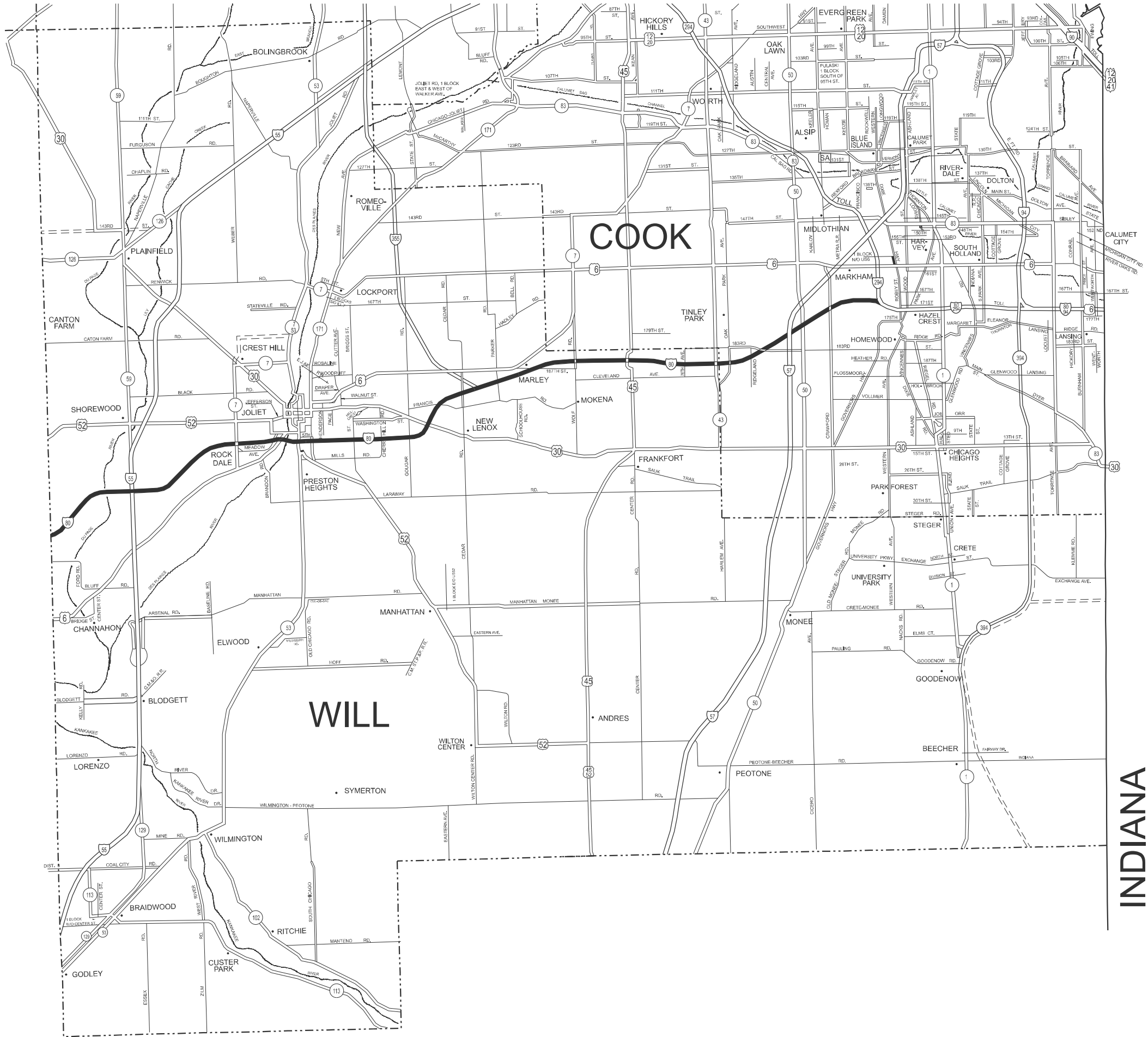
- 701106-02 OFF-ROAD OPERATION MULTILANE, MORE THAN 15' AWAY
- 701426-09 LANE CLOSURE, MULTILANE, INTERMITTENT OR MOVING OPER., FOR SPEEDS ≥ 45 MPH
- 701901-10 TRAFFIC CONTROL DEVICES

MODEL: GenNote01 [Sheet]  
FILE NAME: c:\pw\_work\pwwd\illinois.gov\jacek.ejmont@illinois.gov\d1047020\DD107225-shl-gennote.dgn

	USER NAME = jacek.ejmont	DESIGNED -	REVISED -	STATE OF ILLINOIS DEPARTMENT OF TRANSPORTATION	INDEX OF SHEETS APPLICABLE STATE STANDARDS				F.A.I RTE.	SECTION	COUNTY	TOTAL SHEETS	SHEET NO.
		DRAWN -	REVISED -						80	2024-1038-I	*	5	2
		CHECKED -	REVISED -		CONTRACT NO. 62X81								
	PLOT DATE = 10/18/2024	DATE -	REVISED -		ILLINOIS   FED. AID PROJECT								
					SCALE: NONE	SHEET 1	OF 1	SHEETS	STA.	TO STA.			



MODEL: MAPS [Sheet]  
FILE NAME: c:\p\work\will\illinois.gov\_jack.ajmont@illinois.gov\1047020D\107225-shh-details.dgn



USER NAME	= brad.gagliano
PLOT DATE	= 10/18/2024

DESIGNED	-
DRAWN	-
CHECKED	-
DATE	-

REVISED	-
REVISED	-
REVISED	-
REVISED	-

STATE OF ILLINOIS  
DEPARTMENT OF TRANSPORTATION

EXPRESSWAY CLEANING MAP: I-80 (I-294 TO KENDALL CO LINE)

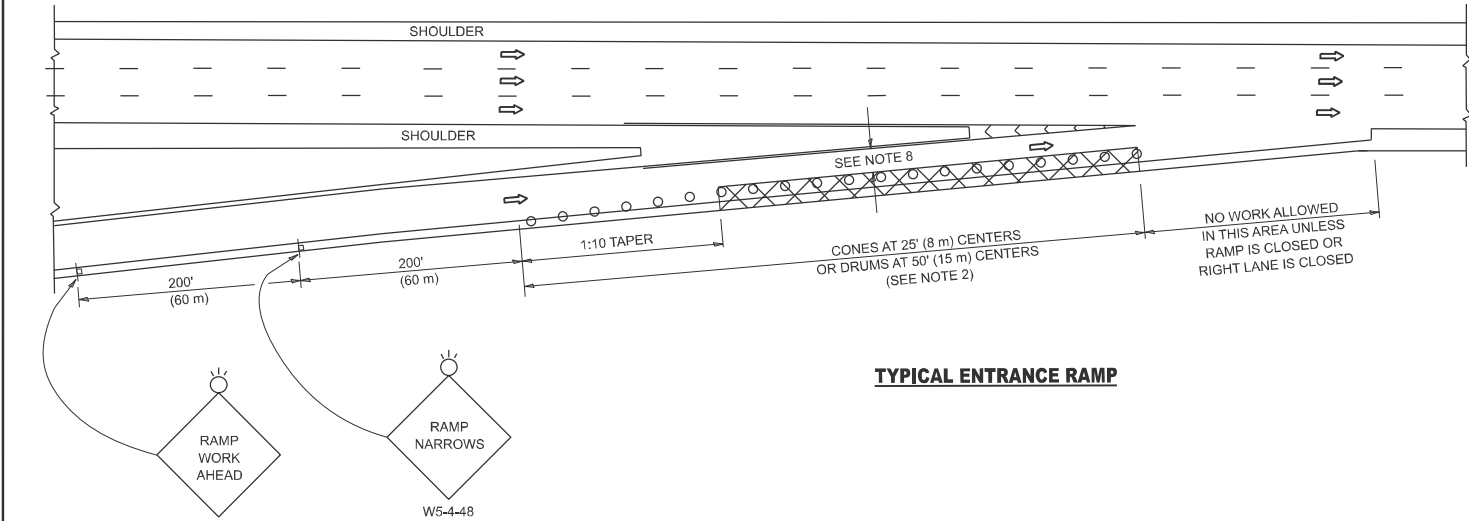
SCALE: NONE    SHEET 1    OF 1    SHEETS    STA.    TO STA.

F.A.I RTE.	SECTION	COUNTY	TOTAL SHEETS	SHEET NO.
80	2024-1038-I	*	5	4
CONTRACT NO. 62X81				
ILLINOIS    FED. AID PROJECT				

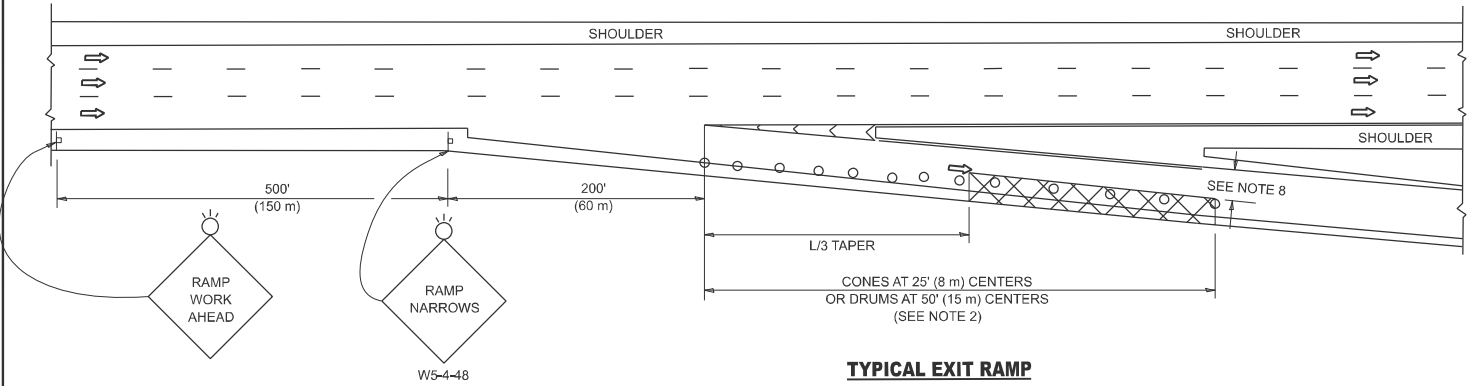
\* COOK, WILL



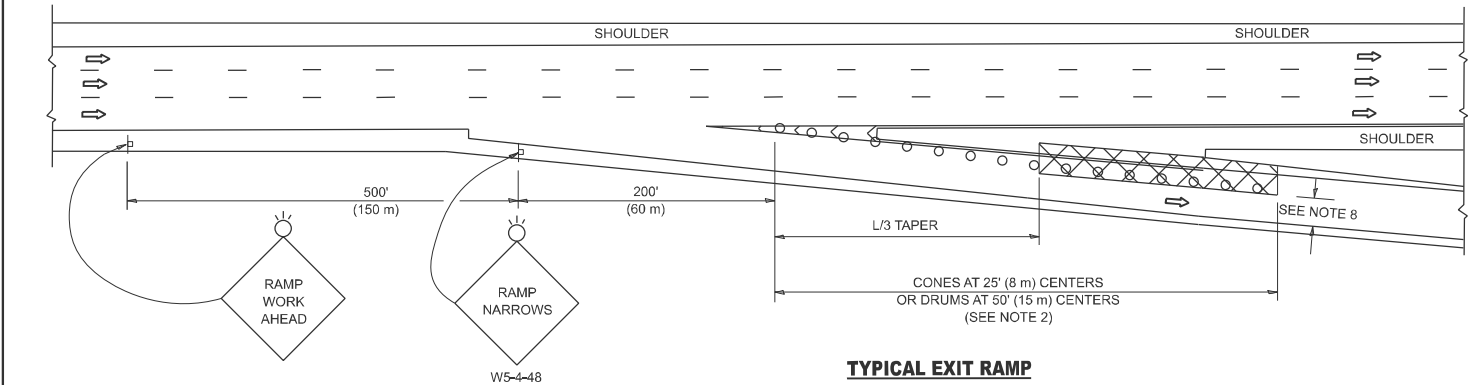
PARTIAL RAMP CLOSURE DETAILS



TYPICAL ENTRANCE RAMP



TYPICAL EXIT RAMP



TYPICAL EXIT RAMP

SYMBOLS

- ACTIVE WORK AREA
- SIGN ON PORTABLE OR PERMANENT SUPPORT
- FLAGGER WITH CONTROL SIGN
- TYPE II BARRICADE OR DRUM
- CONE, DRUM OR BARRICADE
- IMPACT ATTENUATOR OF TYPE AND TEST LEVEL SPECIFIED

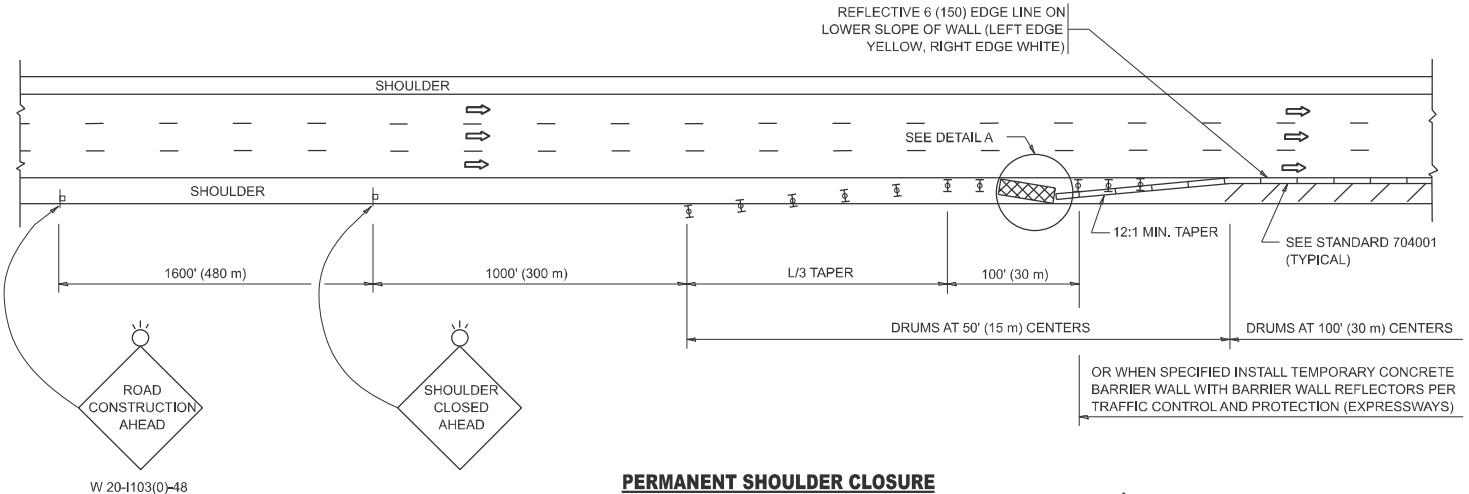
GENERAL NOTES:

- THE "L" DISTANCE EQUALS:  

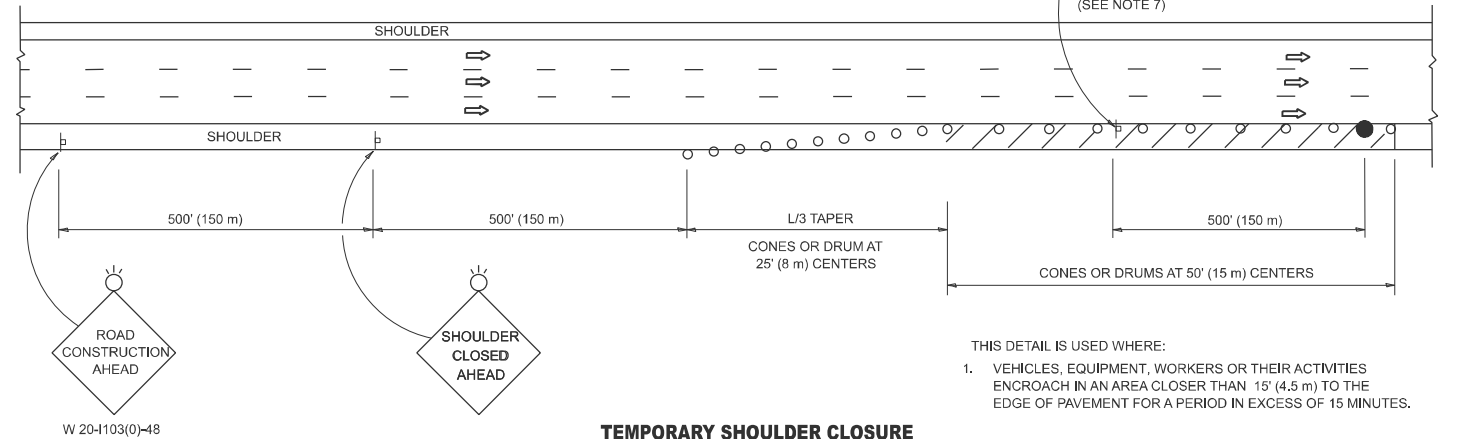
SPEED LIMIT	FORMULAS	
	METRIC	ENGLISH
45 mph (80 km/h) OR GREATER:	$L=0.65(W)(S)$	$L=(W)(S)$

W = WIDTH OF OFFSET IN FEET (METERS)  
S = NORMAL POSTED SPEED MPH (KM/H)
- TYPE II BARRICADES OR DRUMS ARE REQUIRED FOR ALL NIGHTTIME CLOSURES. TYPE II BARRICADES OR DRUMS WITH MONODIRECTIONAL STEADY BURN LIGHTS ARE REQUIRED FOR DELINEATING OBSTACLES, EXCAVATIONS, OR HAZARDS EXCEEDING 100 FT (30m) IN LENGTH AT NIGHT.
- ALL SIGNS SHALL BE POST MOUNTED IF THE CLOSURE TIME EXCEEDS FOUR DAYS.
- FLASHING LIGHTS SHALL BE USED DURING THE HOURS OF DARKNESS AND SHALL BE INSTALLED ABOVE THE FIRST TWO SETS OF SIGNS.

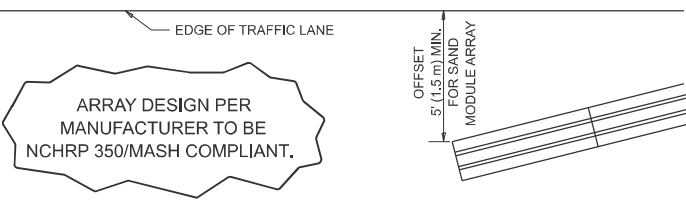
SHOULDER CLOSURE DETAILS



PERMANENT SHOULDER CLOSURE



TEMPORARY SHOULDER CLOSURE



DETAIL "A"  
IMPACT ATTENUATOR, TEMPORARY  
(SEE NOTE 5)

- THE IMPACT ATTENUATOR, TEMPORARY IS NOT REQUIRED WHEN THE TEMPORARY CONCRETE BARRIER WALL IS PROTECTED BY OR IS TIED INTO THE EXISTING GUARDRAIL. IF OFFSET IS LESS THAN 5 FEET USE NARROW USE TYPE DEVICE TO MEET NCHRP350/MASH.
- AUTHORIZATION FROM THE DISTRICT'S BUREAU OF TRAFFIC IS REQUIRED FOR ALL FREEWAY CLOSURES.
- THE FLAGGER AND FLAGGER SIGN ARE REQUIRED AT THE ABOVE WORK SITES WHEN:
  - FOUR OR MORE WORK VEHICLES ENTER THE TRAFFIC LANES IN A ONE HOUR PERIOD.
  - THE WORK ACTIVITY REQUIRES FREQUENT ENCR OACHMENT INTO THE LANE OPEN TO TRAFFIC.THE FLAGGER SHALL BE STATIONED APPROXIMATELY 100' (30 m) TO 200' (60 m) IN ADVANCE OF THE WORKERS.
- 12' MIN. WIDTH TANGENT SECTION  
16' MIN. WIDTH CURVE SECTION.
- TEMPORARY SHOULDER AND NON-SYSTEM INTERCHANGE PARTIAL RAMP CLOSURES ARE ALLOWED WEEKDAYS BETWEEN 9:00 A.M. AND 3:00 P.M. AND BETWEEN 7:00 P.M. AND 5:00 A.M. OR AS APPROVED BY THE EXPRESSWAY TRAFFIC OPERATIONS ENGINEER. PERMANENT SHOULDER AND PARTIAL RAMP CLOSURES WILL ONLY BE PERMITTED IF CALLED FOR IN THE PLANS OR AS APPROVED BY THE EXPRESSWAY OPERATIONS ENGINEER.

ALL DIMENSIONS ARE IN INCHES (MILLIMETERS) UNLESS OTHERWISE SHOWN.

MODEL: TC17 (Sheet)  
FILE NAME: c:\p\work\w\idol\gag\lanobld1047020D107225-sh-Dst\dsts.dgn

	USER NAME   = brad.gagliano	DESIGNED   -	REVISED   -   M.D. 06-13	STATE OF ILLINOIS DEPARTMENT OF TRANSPORTATION	TRAFFIC CONTROL DETAILS FOR FREEWAY SHOULDER CLOSURES AND PARTIAL RAMP CLOSURES	SCALE: NONE	SHEET   1	OF   1	SHEETS	STA.	TO STA.	F.A.I RTE.	SECTION	COUNTY	TOTAL SHEETS	SHEET NO.
		DRAWN   -   D.W.S.	REVISED   -   M.D. 01-18									80	2024-1038-I	*	5	5
		CHECKED   -	REVISED   -   M.D. 10-20									TC-17		CONTRACT NO. 62X81		
		PLOT DATE   = 10/15/2024	DATE       -   11-96									REVISED   -   D.S. 05-24	ILLINOIS   FED. AID PROJECT			

\* COOK, WILL