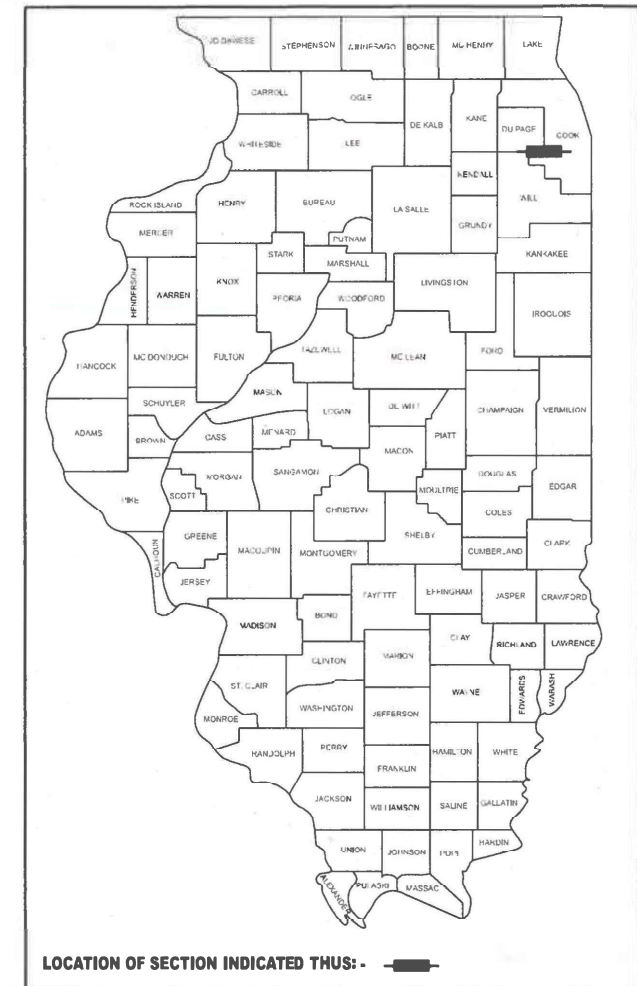


F.A.I. RTE.	SECTION	COUNTY	TOTAL SHEETS	SHEET NO.
*	2024-1039-I	*	6	1
		ILLINOIS	CONTRACT NO. 62X75	

I-290, ILL 53

\* COOK, DUPAGE

D-91-066-25



01-17-2025 LETTING ITEM 076

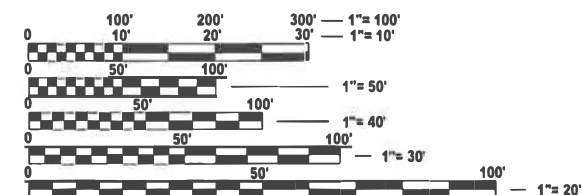
STATE OF ILLINOIS  
DEPARTMENT OF TRANSPORTATION

PROPOSED  
HIGHWAY PLANS

FAI ROUTE VARIOUS  
SECTION 2024-1039-I  
DEBRIS / LITTER PICKING  
TYPE of IMPROVEMENT  
COOK AND DUPAGE COUNTIES

C-91-087-25

FOR INDEX OF SHEETS, SEE SHEET NO. 2



FULL SIZE PLANS HAVE BEEN PREPARED USING STANDARD  
ENGINEERING SCALES. REDUCED SIZED PLANS WILL NOT  
CONFORM TO STANDARD SCALES. IN MAKING MEASUREMENTS  
ON REDUCED PLANS, THE ABOVE SCALES MAY BE USED.

J.U.L.I.E.  
JOINT UTILITY LOCATION INFORMATION FOR EXCAVATION  
1-800-892-0123  
OR 811

PROJECT ENGINEER: OSCAR OLIVEROS (847) 705-4548  
PROJECT MANAGER: JACEK EJMONT (847) 705-4641

CONTRACT NO. 62X75

LOCATION MAP - SEE INDEX OF SHEETS

STATE OF ILLINOIS  
DEPARTMENT OF TRANSPORTATION

SUBMITTED Oct 21 2024  
Jacek EJMONT REGIONAL ENGINEER  
December 6, 2024  
Scott A. Elk ENGINEER OF DESIGN AND ENVIRONMENT  
December 6, 2024  
James J. Jan DIRECTOR OF HIGHWAYS PROJECT IMPLEMENTATION 13

PRINTED BY THE AUTHORITY  
OF THE STATE OF ILLINOIS

INDEX OF SHEETS

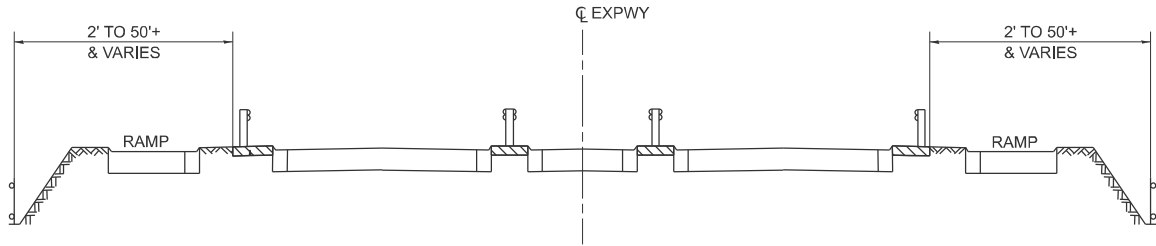
- 1. TITLE SHEET
- 2. INDEX OF SHEETS  
APPLICABLE STATE STANDARDS
- 3. GENERAL NOTES, SUMMARY OF QUANTITIES, &  
TYPICAL EXPRESSWAY CROSS-SECTIONS
- 4. EXPRESSWAY CLEANING MAP: I-290 & I-290 EXTENSION FROM AUSTIN BLVD TO IL-83
- 5. EXPRESSWAY CLEANING MAP: I-290 EXTENSION & ILL 53 FROM IL-83 TO LAKE COOK ROAD
- 6. TRAFFIC CONTROL DETAILS FOR FREEWAY SHOULDER CLOSURES  
AND PARTIAL RAMP CLOSURES (TC-17)

STATE STANDARDS

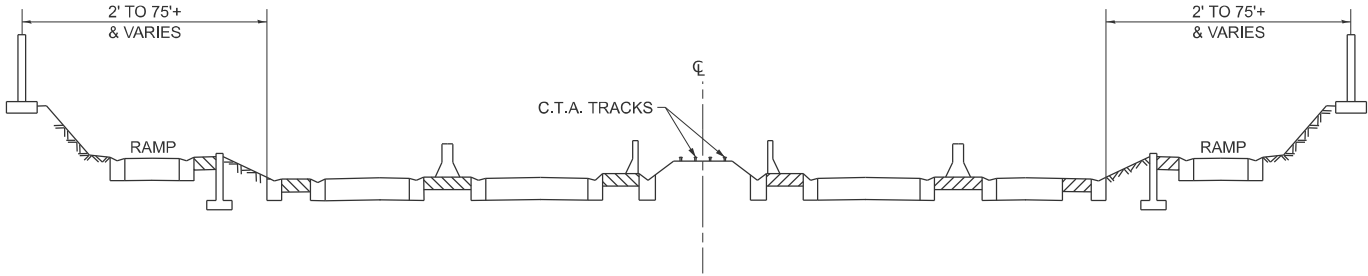
- 701106-02 OFF-ROAD OPERATION MULTILANE, MORE THAN 15' AWAY
- 701426-09 LANE CLOSURE, MULTILANE, INTERMITTENT OR MOVING OPER., FOR SPEEDS ≥ 45 MPH
- 701901-10 TRAFFIC CONTROL DEVICES

MODEL: GenNote01 [Sheet]  
FILE NAME: c:\pwworking\illinois.gov\jacek.ejmont\1066205-shl-gennote.dgn

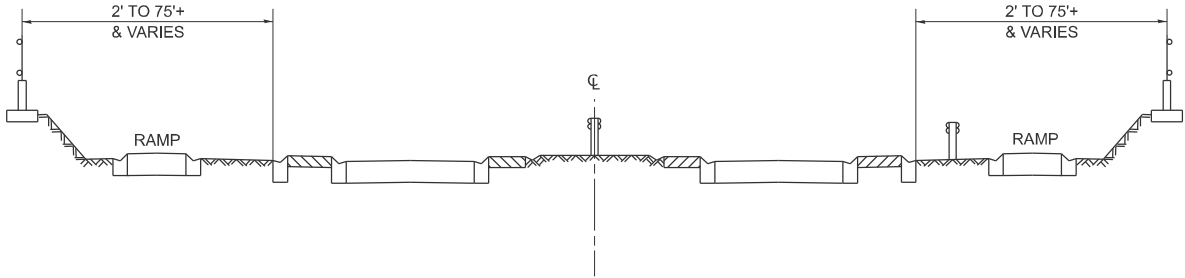
	USER NAME = jacek.ejmont	DESIGNED -	REVISED -	STATE OF ILLINOIS DEPARTMENT OF TRANSPORTATION	INDEX OF SHEETS APPLICABLE STATE STANDARDS			F.A.I RTE.	SECTION	COUNTY	TOTAL SHEETS	SHEET NO.
		DRAWN -	REVISED -					*	2024-1039-I	*	6	2
		CHECKED -	REVISED -					CONTRACT NO. 62X75				
	PLOT DATE = 10/21/2024	DATE -	REVISED -		SCALE: NONE	SHEET 1	OF 6 SHEETS	STA.	TO STA.	ILLINOIS   FED. AID PROJECT		



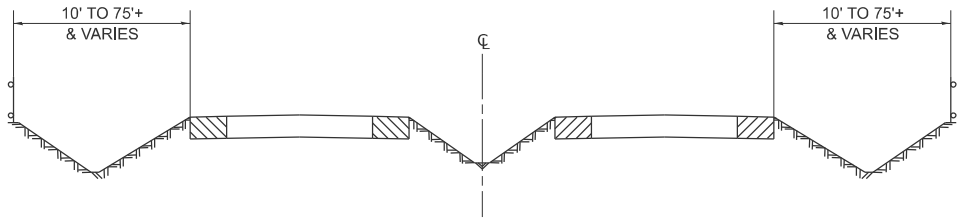
TYPICAL EXPRESSWAY CROSS-SECTION NO. 1



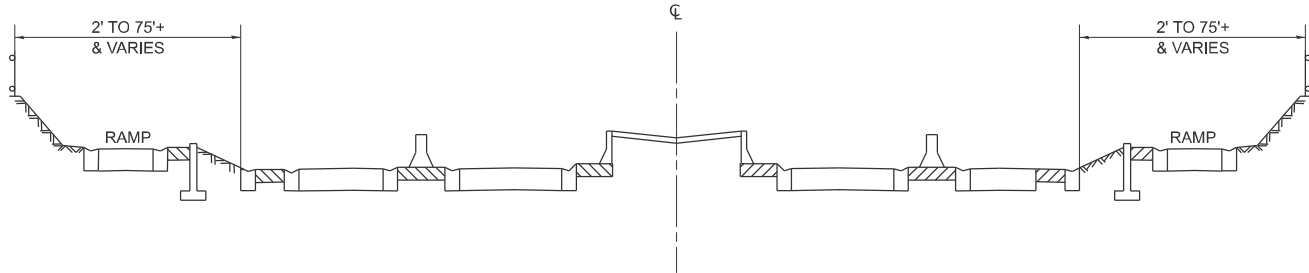
TYPICAL EXPRESSWAY CROSS-SECTION NO. 2



TYPICAL EXPRESSWAY CROSS-SECTION NO. 3



TYPICAL EXPRESSWAY CROSS-SECTION NO. 4



TYPICAL EXPRESSWAY CROSS-SECTION NO. 5

NOTES:

1. SCHEDULE MAY VARY AS DIRECTED BY THE ENGINEER.
2. NO DAILY CONTRACTOR WORK REQUESTS/SCHEDULING SHALL BE AUTHORIZED OR APPROVED TO START WHEN IT IS DETERMINED BY THE ENGINEER THAT WEATHER CONDITIONS WILL BE UNFAVORABLE. APPROVAL OF DAILY CONTRACTOR WORK SCHEDULE REQUEST SHALL BE SOLELY DETERMINED BY THE ENGINEER.
3. ALL SHOULDER CLOSURES SHALL BE IMMEDIATELY REMOVED DURING ALL ADVERSE WEATHER CONDITIONS WITHOUT EXCEPTION, INCLUDING BUT NOT LIMITED TO RAIN, WET ROAD SURFACE (SPRAY FROM TIRES), MIST, DRIZZLE, SLEET, SNOW, FOG AND ANY OTHER CIRCUMSTANCE DETERMINED UNSAFE BY THE ENGINEER. THE CONTRACTOR SHALL IMPLEMENT THIS CONTRACT REQUIREMENT IMMEDIATELY WITHOUT WAITING FOR DEPARTMENT'S INSTRUCTION.
4. NO WORK WILL BE ALLOWED ON THE FOLLOWING LEGAL HOLIDAYS UNLESS IT IS CONSIDERED AN EMERGENCY, IMMEDIATE HAZARD OR ANY WORK AS DESIGNATED BY THE DEPARTMENT THAT REQUIRES FIRST PRIORITY CORRECTIVE ACTION:

EASTER HOLIDAY  
MEMORIAL DAY HOLIDAY  
INDEPENDENCE DAY HOLIDAY  
LABOR DAY HOLIDAY  
THANKSGIVING HOLIDAY  
CHRISTMAS HOLIDAY  
NEW YEARS HOLIDAY

SUMMARY OF QUANTITIES

<u>SUMMARY OF QUANTITIES</u>			COOK		DUPAGE
			URBAN	100 % STATE 0044	100 % STATE 0044
CODE NO.	ITEM	UNIT	TOTAL QUANTITIES	EXPRESSWAY	EXPRESSWAY
X0326643	LITTER PICKING	MILE	460	359	101

MODEL: TYP [Sheet]  
FILE NAME: c:\p\work\illinois.gov\jacek.ejmont\illinois.gov\d1044680\106625-sh-typical.dgn

USER NAME = jacek.ejmont	DESIGNED -	REVISED -
	DRAWN -	REVISED -
	CHECKED -	REVISED -
PLOT DATE = 10/21/2024	DATE -	REVISED -

STATE OF ILLINOIS  
DEPARTMENT OF TRANSPORTATION

GENERAL NOTES, SUMMARY OF QUANTITIES, &  
TYPICAL EXPRESSWAY CROSS-SECTIONS

SCALE: NONE SHEET 1 OF 1 SHEETS STA. TO STA.

F.A.I RTE.	SECTION	COUNTY	TOTAL SHEETS	SHEET NO.
*	2024-1039-I	*	6	3
CONTRACT NO. 62X75				
ILLINOIS FED. AID PROJECT				

This is a detailed street map of the Chicago area, specifically focusing on the intersection of Cook County and DuPage County. The map shows a grid of streets, including major highways like I-55, I-54, and I-90. A thick black line highlights a route starting from the northwest, passing through the city center, and ending near Lake Michigan. The map is labeled with 'DUPAGE' and 'COOK' in large, bold letters. A north arrow is located in the top right corner.

MODEL: MAP [Sheet]

USER NAME = jacek.ejmont	DESIGNED -	REVISED -
	DRAWN -	REVISED -
	CHECKED -	REVISED -
PLOT DATE = 10/21/2024	DATE -	REVISED -

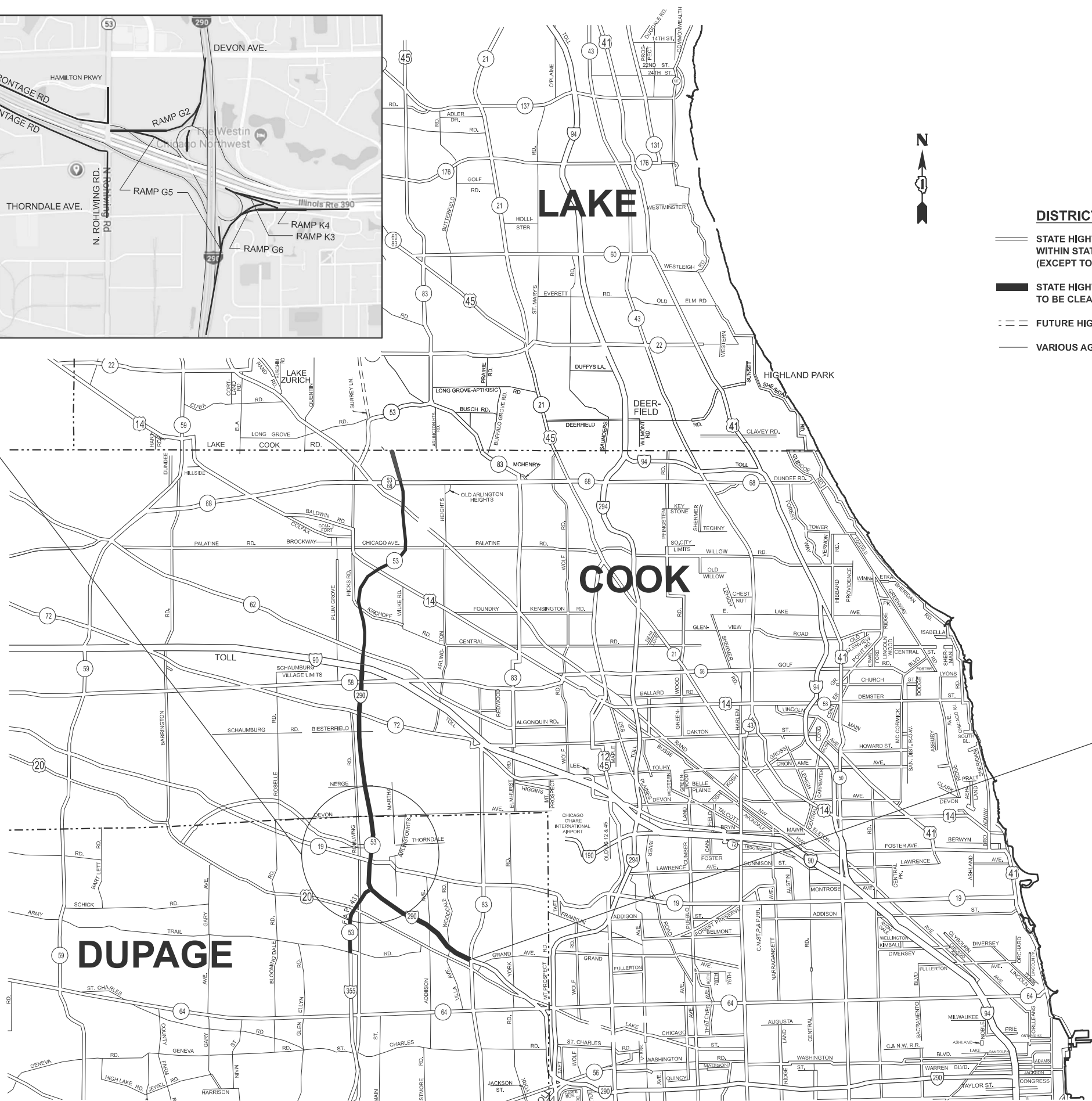
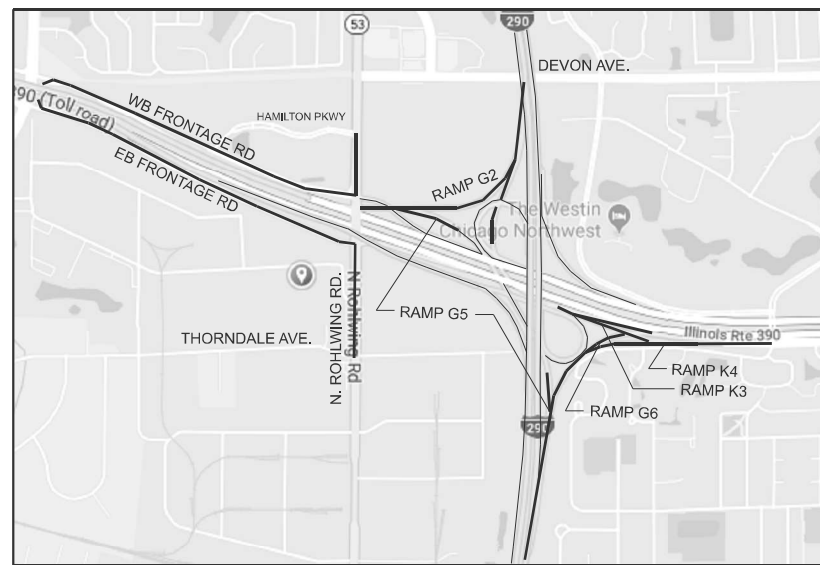
**STATE OF ILLINOIS**  
**DEPARTMENT OF TRANSPORTATION**

## EXPRESSWAY CLEANING MAP

### I-290 & I-290 EXTENTIONS FROM AUSTIN BLVD TO IL-83

SCALE: NONE	SHEET 1	OF 2	SHEETS	STA.	TO STA.
-------------	---------	------	--------	------	---------

F.A.I RTE.	SECTION	COUNTY	TOTAL SHEETS	SHEET NO.
*	2024-1039-I	*	6	4
		CONTRACT NO. 62X75		
ILLINOIS		FED. AID PROJECT		

DISTRICT NO. 1

**STATE HIGHWAYS & EXPRESSWAYS  
WITHIN STATE JURISDICTION  
(EXCEPT TOLLWAYS)**

## STATE HIGHWAYS & EXPRESSWAYS TO BE CLEANED

## FUTURE HIGHWAYS

— VARIOUS AGENCIES HIGHWAYS

— CONTINUED ON SHEET 4

**STATE OF ILLINOIS**  
**DEPARTMENT OF TRANSPORTATION**

## EXPRESSWAY CLEANING MAP

### 290 EXTENSION & ILL 53 FROM IL-83 TO LAKE COOK ROAD

SCALE: NONE	SHEET 2	OF 2	SHEETS	STA.	TO STA.
-------------	---------	------	--------	------	---------

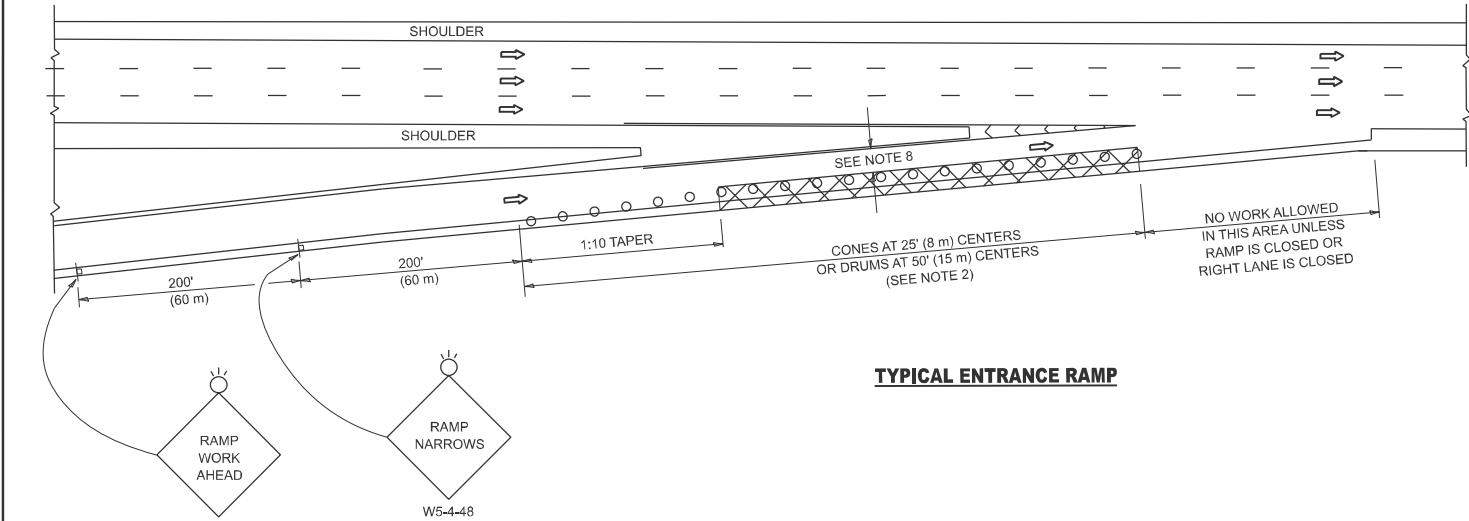
F.A.I RTE.	SECTION	COUNTY	TOTAL SHEETS	SHEET NO.
*	2024-1039-I	*	6	5
		CONTRACT NO. 62X75		
		ILLINOIS	FED. AID PROJECT	

I-290, ILL 53

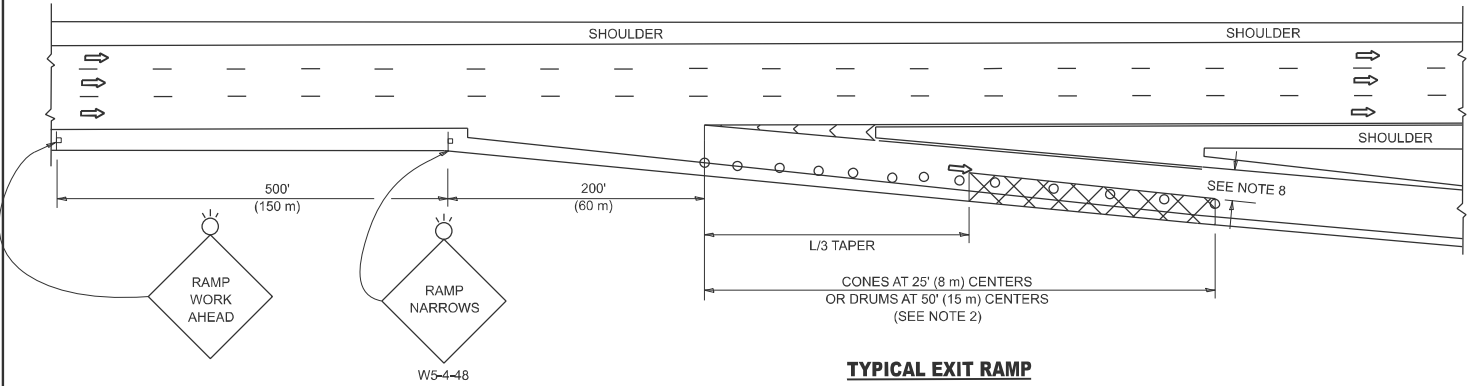
\* COOK, DUPAGE

MODEL: DetailShi01 [Sheet]  
FILE NAME: c:\pw\work\pwidotillinois.gov\_jacek.ejmont@illinois.gov\d1044680\D106625-shi-details2.dgn

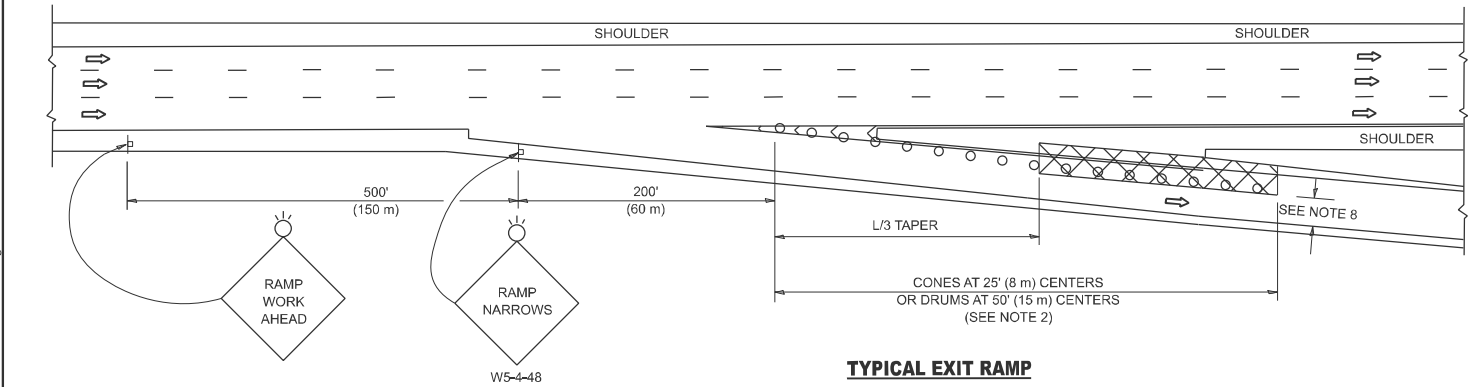
PARTIAL RAMP CLOSURE DETAILS



TYPICAL ENTRANCE RAMP



TYPICAL EXIT RAMP



TYPICAL EXIT RAMP

SYMBOLS

- ACTIVE WORK AREA
- SIGN ON PORTABLE OR PERMANENT SUPPORT
- FLAGGER WITH CONTROL SIGN
- TYPE II BARRICADE OR DRUM
- CONE, DRUM OR BARRICADE
- IMPACT ATTENUATOR OF TYPE AND TEST LEVEL SPECIFIED

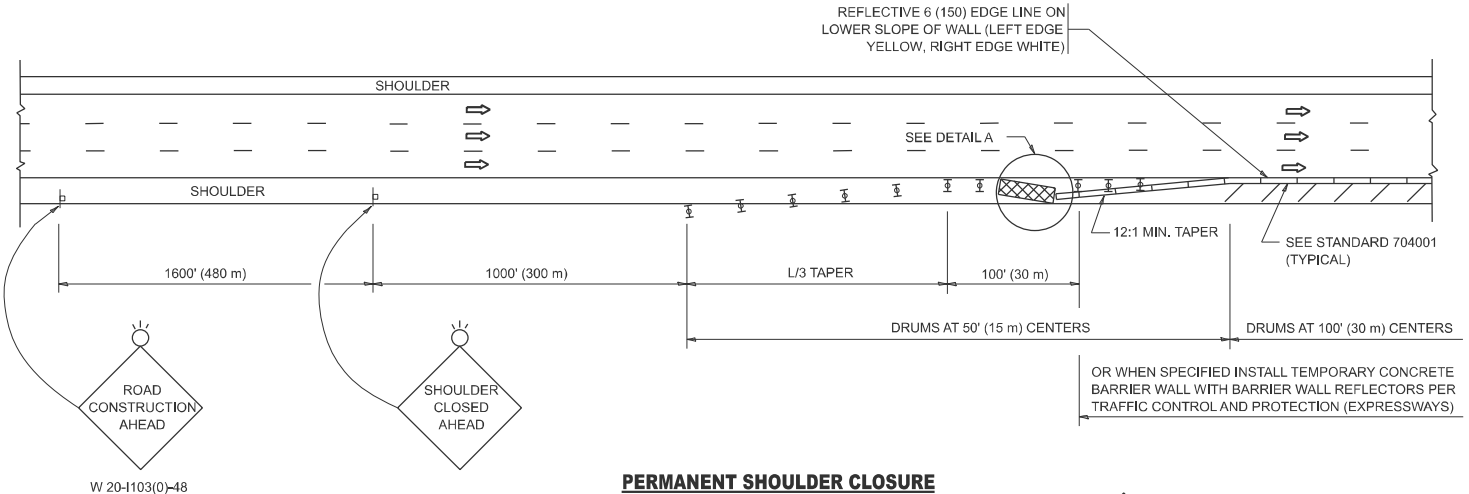
GENERAL NOTES:

- THE "L" DISTANCE EQUALS:  

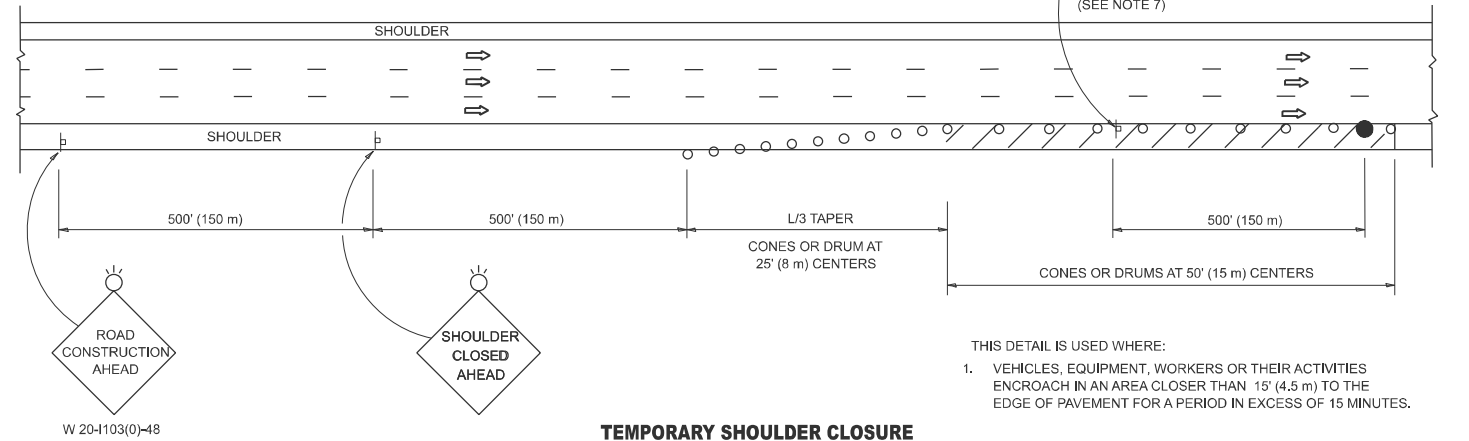
SPEED LIMIT	FORMULAS	
	METRIC	ENGLISH
45 mph (80 km/h)	$L=0.65(W)(S)$	$L=(W)(S)$
OR GREATER:		

W = WIDTH OF OFFSET IN FEET (METERS)  
S = NORMAL POSTED SPEED MPH (KM/H)
- TYPE II BARRICADES OR DRUMS ARE REQUIRED FOR ALL NIGHTTIME CLOSURES. TYPE II BARRICADES OR DRUMS WITH MONODIRECTIONAL STEADY BURN LIGHTS ARE REQUIRED FOR DELINEATING OBSTACLES, EXCAVATIONS, OR HAZARDS EXCEEDING 100 FT (30m) IN LENGTH AT NIGHT.
- ALL SIGNS SHALL BE POST MOUNTED IF THE CLOSURE TIME EXCEEDS FOUR DAYS.
- FLASHING LIGHTS SHALL BE USED DURING THE HOURS OF DARKNESS AND SHALL BE INSTALLED ABOVE THE FIRST TWO SETS OF SIGNS.

SHOULDER CLOSURE DETAILS

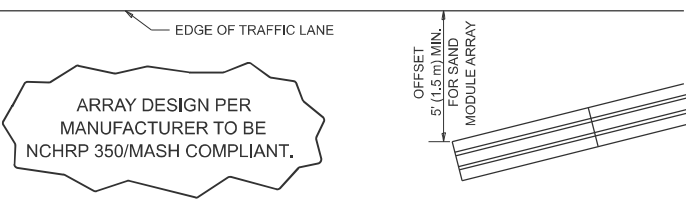


PERMANENT SHOULDER CLOSURE



TEMPORARY SHOULDER CLOSURE

- THIS DETAIL IS USED WHERE:
- VEHICLES, EQUIPMENT, WORKERS OR THEIR ACTIVITIES ENCR OACH IN AN AREA CLOSER THAN 15' (4.5 m) TO THE EDGE OF PAVEMENT FOR A PERIOD IN EXCESS OF 15 MINUTES.



DETAIL "A"  
IMPACT ATTENUATOR, TEMPORARY  
(SEE NOTE 5)

- THE IMPACT ATTENUATOR, TEMPORARY IS NOT REQUIRED WHEN THE TEMPORARY CONCRETE BARRIER WALL IS PROTECTED BY OR IS TIED INTO THE EXISTING GUARDRAIL. IF OFFSET IS LESS THAN 5 FEET USE NARROW USE TYPE DEVICE TO MEET NCHRP350/MASH.
- AUTHORIZATION FROM THE DISTRICT'S BUREAU OF TRAFFIC IS REQUIRED FOR ALL FREEWAY CLOSURES.
- THE FLAGGER AND FLAGGER SIGN ARE REQUIRED AT THE ABOVE WORK SITES WHEN:
  - FOUR OR MORE WORK VEHICLES ENTER THE TRAFFIC LANES IN A ONE HOUR PERIOD.
  - THE WORK ACTIVITY REQUIRES FREQUENT ENCR OACHMENT INTO THE LANE OPEN TO TRAFFIC.THE FLAGGER SHALL BE STATIONED APPROXIMATELY 100' (30 m) TO 200' (60 m) IN ADVANCE OF THE WORKERS.
- 12' MIN. WIDTH TANGENT SECTION  
16' MIN. WIDTH CURVE SECTION.
- TEMPORARY SHOULDER AND NON-SYSTEM INTERCHANGE PARTIAL RAMP CLOSURES ARE ALLOWED WEEKDAYS BETWEEN 9:00 A.M. AND 3:00 P.M. AND BETWEEN 7:00 P.M. AND 5:00 A.M. OR AS APPROVED BY THE EXPRESSWAY TRAFFIC OPERATIONS ENGINEER. PERMANENT SHOULDER AND PARTIAL RAMP CLOSURES WILL ONLY BE PERMITTED IF CALLED FOR IN THE PLANS OR AS APPROVED BY THE EXPRESSWAY OPERATIONS ENGINEER.

ALL DIMENSIONS ARE IN INCHES (MILLIMETERS) UNLESS OTHERWISE SHOWN.

MODEL: TC17 (Sheet)  
FILE NAME: c:\p\work\illinois\gov\jacob.ejmont@illinois.gov\d1044680D106625-shh-DistSids.dgn

	USER NAME = jacob.ejmont	DESIGNED -	REVISED - M.D. 06-13
		DRAWN - D.W.S.	REVISED - M.D. 01-18
		CHECKED -	REVISED - M.D. 10-20
	PLOT DATE = 10/21/2024	DATE - 11-96	REVISED - D.S. 05-24

STATE OF ILLINOIS  
DEPARTMENT OF TRANSPORTATION

TRAFFIC CONTROL DETAILS FOR FREEWAY  
SHOULDER CLOSURES AND PARTIAL RAMP CLOSURES

SCALE: NONE SHEET 1 OF 1 SHEETS STA. TO STA.

F.A.I. RTE.	SECTION	COUNTY	TOTAL SHEETS	SHEET NO.
*	2024-1039-I	*	6	6
TC-17		CONTRACT NO. 62X75		
ILLINOIS		FED. AID PROJECT		

I-290, ILL 53

\* COOK, DUPAGE