

STATE OF ILLINOIS
DEPARTMENT OF TRANSPORTATION

F.A.I. RTE.	SECTION	COUNTY	TOTAL SHEETS	SHEET NO.
74	(10-4-1HB-1)BR	CHAMPAIGN	23	1
ILLINOIS			CONTRACT NO. 70D78	

FOR INDEX OF SHEETS, SEE SHEET NO. 2

FOR SUMMARY OF QUANTITIES SEE SHEET(S) 3-4

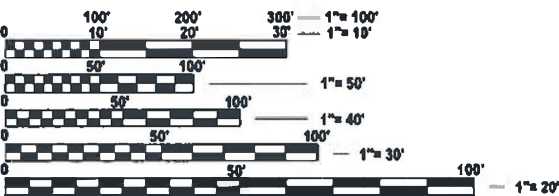
CURRENT TRAFFIC DATA

TURKEY		
I-74 FARM RD		
2024 ADT	22,800	275
2034 ADT	23,900	325
2044 AM D	1,505	N/A
2044 PM D	1,950	N/A
PV + PC%	88.9	90.1
SU%	4.8	8.4
MU%	28.5	1.5

DESIGN DESIGNATION

F.A.I. 74 (INTERSTATE)

C.H. 29 (LOCAL)



FULL SIZE PLANS HAVE BEEN PREPARED USING STANDARD ENGINEERING SCALES. REDUCED SIZED PLANS WILL NOT CONFORM TO STANDARD SCALES. IN MAKING MEASUREMENTS ON REDUCED PLANS, THE ABOVE SCALES MAY BE USED.

J.U.L.I.E.
JOINT UTILITY LOCATION INFORMATION FOR EXCAVATION
1-800-892-0123
OR 811

PROJECT ENGINEER: JEFF M. SHERER
PROJECT MANAGER: TIM BRANDENBURG

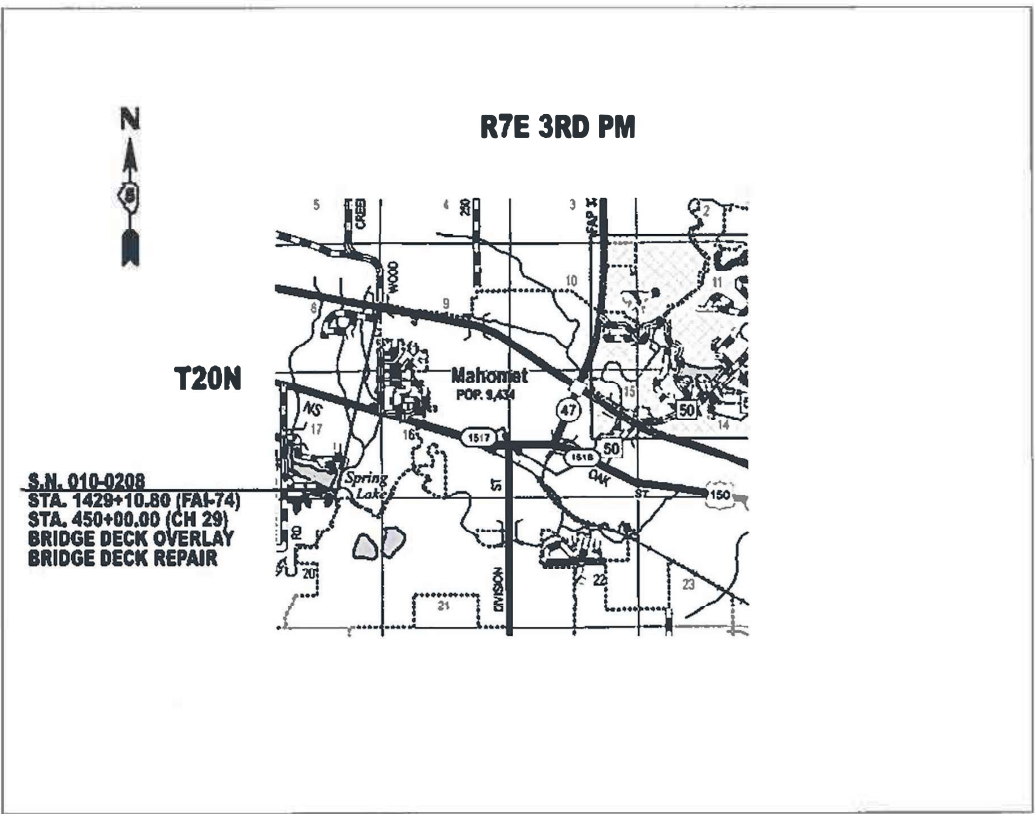
CONTRACT NO. 70D78

PROPOSED
HIGHWAY PLANS

FAI ROUTE 74 (I-74)
SECTION (10-4-1HB-1)BR
PROJECT BR-6Z51(628)
BRIDGE DECK OVERLAY, BRIDGE REPAIR
CHAMPAIGN COUNTY

C-95-068-22

AT TURKEY FARM ROAD (OVERHEAD) W OF MAHOMET



GROSS LENGTH = 348.918 FT. = 0.066 MILE
NET LENGTH = 348.918 FT. = 0.066 MILE



LOCATION OF SECTION INDICATED THUS: -

STATE OF ILLINOIS
DEPARTMENT OF TRANSPORTATION

SUBMITTED October 10, 2024
Jeff M. Sherer REGIONAL ENGINEER

December 6, 2024
Jeff M. Sherer ENGINEER OF DESIGN AND ENVIRONMENT

December 6, 2024
Jeff M. Sherer DIRECTOR OF HIGHWAYS PROJECT IMPLEMENTATION

PRINTED BY THE AUTHORITY
OF THE STATE OF ILLINOIS

INDEX OF SHEETS

SHEET NO.	ITEM
1	COVER SHEET
2	INDEX OF SHEETS/ HIGHWAY STANDARDS/ GENERAL NOTES
3-4	SUMMARY OF QUANTITIES
5	EXISTING DECK CROSS-SECTION
6	PROPOSED DECK CROSS-SECTION
7	GENERAL PLAN AND ELEVATION S.N. 010-0208
8-9	DETAIL OF REMOVAL AT DECK ENDS
10-11	DETAIL OF CONSTRUCTION AT DECK ENDS
12	DETAIL OF STRIP SEAL JOINT
13	WEARING SURFACE PLAN
14	DETAIL OF FLOOR DRAINS
15	DETAIL OF REMOVAL AT ABUTMENTS
16	DETAIL OF CONSTRUCTION AT ABUTMENTS
17-19	DETAIL OF DECK SLAB REPAIR
20	DETAIL OF STEEL REPAIRS
21	DETAIL OF ELASTOMERIC BEARINGS
22	DETAIL OF TRAFFIC CONTROL & PROTECTION (SPECIAL)
23	DETAIL OF ROAD CLOSURE

LIST OF STANDARDS

STANDARD NO.	DESCRIPTION
000001-08	STANDARD SYMBOLS, ABBREVIATIONS AND PATTERNS
001001-02	AREAS OF REINFORCEMENT BARS
001006	DECIMAL OF AN INCH AND OF A FOOT
701001-02	OFF RD OPERATIONS, 2L, 2W, 15' FROM PAVEMENT EDGE
701006-05	OFF RD OPERATIONS, 2L, 2W, 15' TO 24" FROM PAVEMENT EDGE
701301-04	LANE CLOSURE, 2L, 2W, SHORT TIME OPERATION
701400-12	APPROACH TO LANE CLOSURE FREEWAY/ EXPRESSWAY
701406-13	LANE CLOSURE FREEWAY/ EXPRESSWAY DAY ONLY
701901-10	TRAFFIC CONTROL DEVICES

GENERAL NOTES

G.N.-100

ENGLISH UNITS OF MEASUREMENT SHALL GOVERN OVER AND SUPERSEDE ANY METRIC UNITS SHOWN IN THIS CONTRACT. WHERE INCLUDED, METRIC UNITS ARE FOR INFORMATION ONLY.

G.N.-406

THE QUANTITIES INCLUDED IN THE PLANS FOR HOT-MIX ASPHALT RESURFACING ARE INTENDED TO GIVE THE COVERAGE SHOWN ON THE TYPICAL CROSS SECTIONS. IT IS NOT INTENDED TO INCREASE THE THICKNESS OF THE HOT-MIX ASPHALT MIXTURE IN ORDER TO USE ALL OF THE QUANTITIES INCLUDED IN THE CONTRACT.

G.N.-1004.01

COARSE AGGREGATE GRADATION CA-10 MAY BE USED WHENEVER COARSE AGGREGATE CA-6 IS SPECIFIED IN THE STANDARD SPECIFICATIONS.

THERE ARE NO COMMITMENTS ASSOCIATED WITH THIS PROJECT

G.N. -406H

GN 406H Mixture Requirements

Contract: 70D78

Location	CH 29
Mixture Use	Mainline
AC/PG	PG 64-22
Design Air Voids	4.0% @ Ndes=50
Mix Comp(Gradation)	IL 9.5
Friction Aggregate	Mix C
Mixture Weight	112
Quality Management Program	QC/QA
Sublot Size	3000
Material Transfer Device (Required ?)	NO

COARSE AGGREGATE GRADATION CA-10 MAY BE USED WHENEVER COARSE AGGREGATE CA-6 IS SPECIFIED IN THE STANDARD SPECIFICATIONS.

MODEL: IndexGenNotes [Sheet]
FILE NAME: c:\paw_work\paw\tdot\lateral\proj\md0923394\70D78.sht-IndexGenNotes.dgn

	USER NAME = Jeff.Sherer	DESIGNED -	REVISED -	STATE OF ILLINOIS DEPARTMENT OF TRANSPORTATION	INDEX OF SHEETS/ GENERAL NOTES			F.A.I. RTE.	SECTION	COUNTY	TOTAL SHEETS	SHEET NO.
		DRAWN -	REVISED -					74	(10-4-1HB-1)BR	CHAMPAIGN	23	2
		CHECKED -	REVISED -					CONTRACT NO. 70D78				
	PLOT DATE = 9/18/2024	DATE -	REVISED -		SCALE: NONE	SHEET 1	OF 1 SHEETS	STA.	TO STA.	ILLINOIS FED. AID PROJECT		

MODEL: SQ01 [Sheet]
FILE NAME: c:\pwworking\tdaherjmd\0923947\0D78-shit-SQ0.dgn

				CHAMPAIGN COUNTY FAI-74 (I-74)) URBAN BRIDGE DECK OVERLAY/ REPAIRS S.N. 010-0208 90% FED/ 10% STATE
CODE NO.	ITEM	UNIT	TOTAL QUANTITY	0059
40600290	BITUMINOUS MATERIALS (TACK COAT)	POUND	95.0	95.0
40600982	HOT-MIX ASPHALT SURFACE REMOVAL - BUTT JOINT	SQ YD	210.0	210.0
40604050	HOT-MIX ASPHALT SURFACE COURSE, IL-9.5, MIX "C", N50	TON	21.0	21.0
50102400	CONCRETE REMOVAL	CU YD	24.9	24.9
50157300	PROTECTIVE SHIELD	SQ YD	251.0	251.0
50300100	FLOOR DRAINS	EACH	8.0	8.0
50300225	CONCRETE STRUCTURES	CU YD	15.2	15.2
50300255	CONCRETE SUPERSTRUCTURE	CU YD	13.3	13.3
50300260	BRIDGE DECK GROOVING	SQ YD	691.0	691.0
50300300	PROTECTIVE COAT	SQ YD	762.4	762.4
50500405	FURNISHING AND ERECTING STRUCTURAL STEEL	POUND	3810.0	3810.0
50800205	REINFORCEMENT BARS, EPOXY COATED	POUND	4470.0	4470.0
52000110	PREFORMED JOINT STRIP SEAL	FOOT	62.0	62.0
52100010	ELASTOMERIC BEARING ASSEMBLY, TYPE I	EACH	8.0	8.0
52100520	ANCHOR BOLTS, 1"	EACH	16.0	16.0
67000500	ENGINEER'S FIELD OFFICE, TYPE B	CAL MO	5.0	5.0

* SPECIALTY ITEM

	USER NAME = Jeff.Sherer	DESIGNED -	REVISED -	STATE OF ILLINOIS DEPARTMENT OF TRANSPORTATION	SUMMARY OF QUANTITIES			FAI RTE	SECTION	COUNTY	TOTAL SHEETS	SHEET NO.
		DRAWN -	REVISED -					74	(10-4-1HB-1)BR	CHAMPAIGN	23	3
		CHECKED -	REVISED -		SCALE: NONE			CONTRACT NO. 70D78				
	PLOT DATE = 10/9/2024	DATE -	REVISED -		SHEET 1	OF 2	SHEETS	STA.	TO STA.	ILLINOIS FED. AID PROJECT		

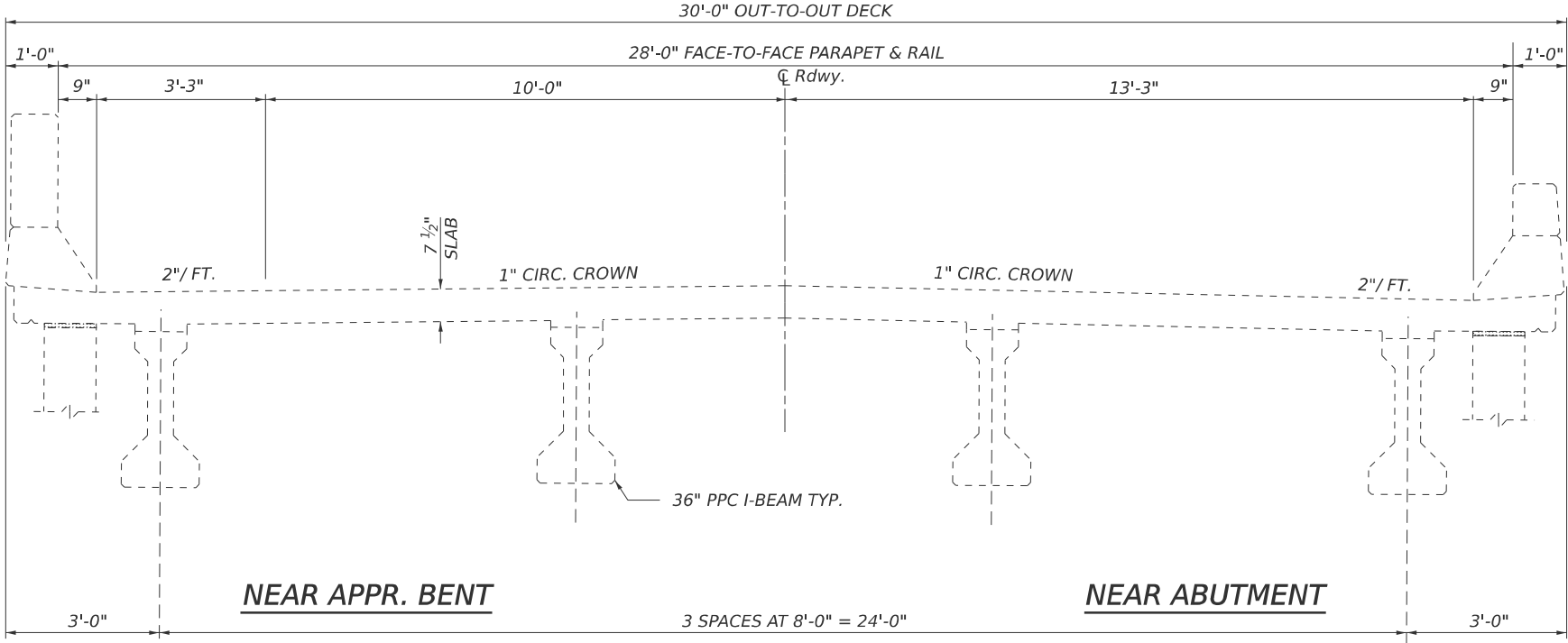
MODEL: SQ02 [Sheet]
FILE NAME: c:\pwworking\tdaher\pmd092394\70D78-shl-SQ02.dgn

				CHAMPAIGN COUNTY FAI-74 (I-74)) URBAN BRIDGE DECK OVERLAY/ REPAIRS S.N. 010-0208 90% FED/ 10% STATE
CODE NO.	ITEM	UNIT	TOTAL QUANTITY	0059
67100100	MOBILIZATION	L SUM	1.0	1.0
70100700	TRAFFIC CONTROL AND PROTECTION, STANDARD 701406	L SUM	1.0	1.0
70107025	CHANGEABLE MESSAGE SIGN	CAL DA	28.0	28.0
70400100	TEMPORARY CONCRETE BARRIER	FOOT	620.0	620.0
70600250	IMPACT ATTENUATORS, TEMPORARY (NON- REDIRECTIVE), TEST LEVEL 3	EACH	2.0	2.0
X7010216	TRAFFIC CONTROL AND PROTECTION, (SPECIAL)	L SUM	1.0	1.0
Z0001899	JACK AND REMOVE EXISTING BEARINGS	EACH	8.0	8.0
Z0001903	STRUCTURAL STEEL REMOVAL	POUND	2330.0	2330.0
Z0001905	STRUCTURAL STEEL REPAIR	POUND	3130.0	3130.0
Z0012111	BRIDGE DECK FLY ASH OR GGBF SLAG CONCRETE OVERLAY, 2 1/2"	SQ YD	716.0	716.0
Z0012130	BRIDGE DECK SCARIFICATION 3/4"	SQ YD	716.0	716.0
Z0013798	CONSTRUCTION LAYOUT	L SUM	1.0	1.0
Z0016002	DECK SLAB REPAIR (FULL DEPTH, TYPE II)	SQ YD	57.0	57.0
Z0012754	STRUCTURAL REPAIR OF CONCRETE (DEPTH EQUAL TO OR LESS THAN 5 INCHES)	SQ YD	97.0	97.0
Z0041895	POLYMER CONCRETE	CU FT	4.0	4.0

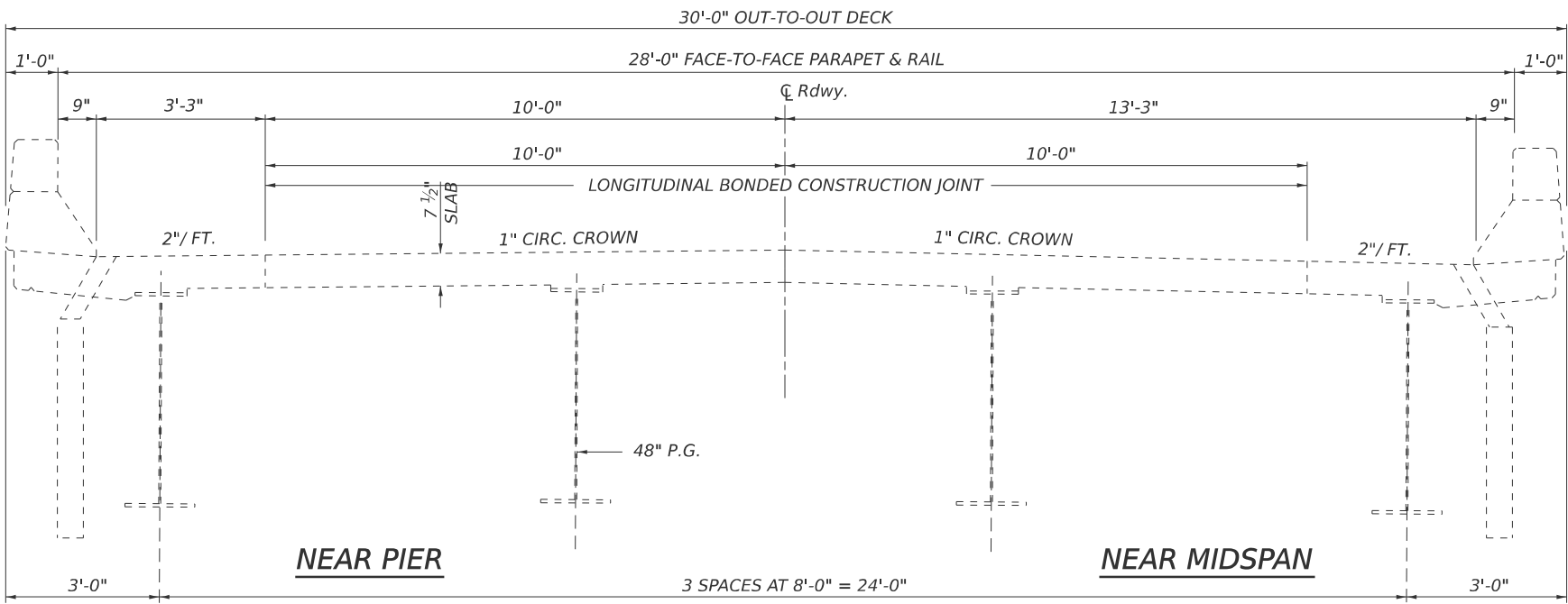
* SPECIALTY ITEM

	USER NAME = Jeff.Sherer	DESIGNED -	REVISED -	STATE OF ILLINOIS DEPARTMENT OF TRANSPORTATION	SUMMARY OF QUANTITIES			F.A.I. RTE.	SECTION	COUNTY	TOTAL SHEETS	SHEET NO.
		DRAWN -	REVISED -					74	(10-4-1HB-1)BR	CHAMPAIGN	23	4
		CHECKED -	REVISED -		CONTRACT NO. 70D78							
	PLOT DATE = 10/9/2024	DATE -	REVISED -		SCALE: NONE	SHEET 2	OF 2 SHEETS	STA.	TO STA.	ILLINOIS FED. AID PROJECT		

EXISTING TYPICAL CROSS-SECTION
(APPROACH BENT LOOKING NORTH)



EXISTING TYPICAL CROSS-SECTION
(DECK LOOKING NORTH)



MODEL: EXIST DECK TYPICAL [Sheet]
FILE NAME: c:\p\work\idolsherer\md0929394\70D78-shr-RepairPlans.dgn

USER NAME	= Jeff.Sherer	DESIGNED	-	REVISED	-
		DRAWN	-	REVISED	-
		CHECKED	-	REVISED	-
PLOT DATE	= 9/18/2024	DATE	-	REVISED	-

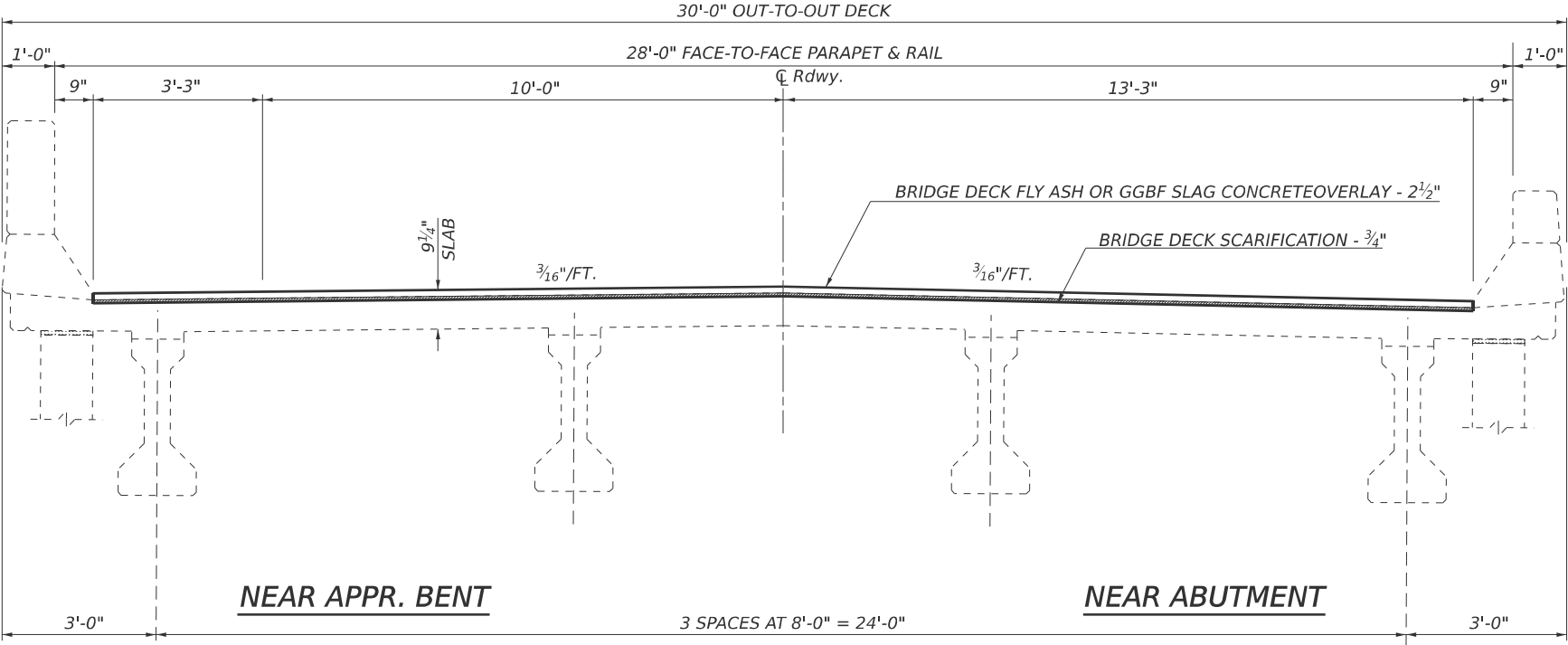
STATE OF ILLINOIS
DEPARTMENT OF TRANSPORTATION

EXISTING DECK CROSS-SECTION
S.N. 010-0208

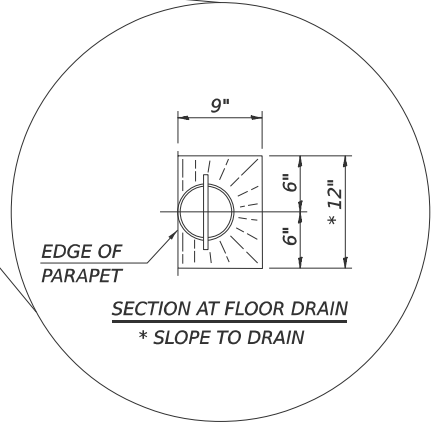
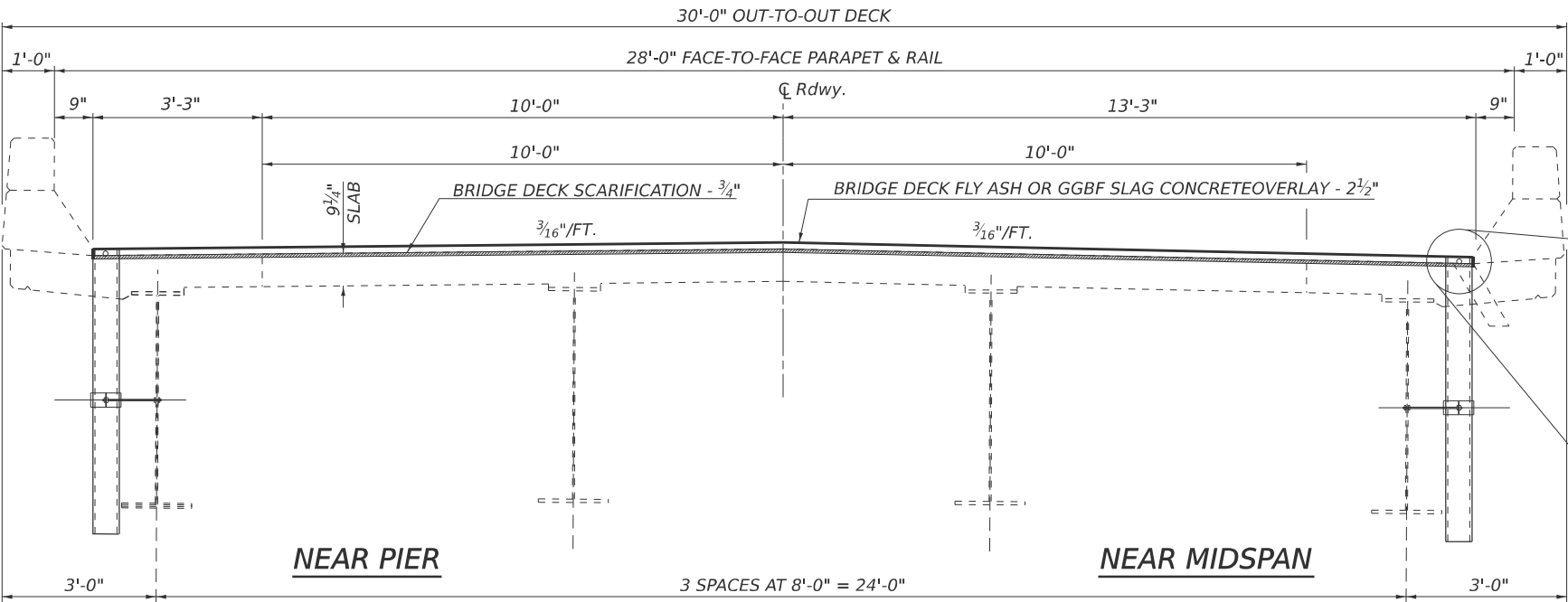
SCALE: NONE SHEET 1 OF 1 SHEETS STA. TO STA.

F.A.I. RTE.	SECTION	COUNTY	TOTAL SHEETS	SHEET NO.
74	(10-4-1HB-1)BR	CHAMPAIGN	23	5
		CONTRACT NO. 70D78		
		ILLINOIS FED. AID PROJECT		

PROPOSED TYPICAL CROSS-SECTION
(APPROACH BENT LOOKING NORTH)



PROPOSED TYPICAL CROSS-SECTION
(DECK LOOKING NORTH)



MODEL: PROP DECK TYP (Sheet)
FILE NAME: c:\p\work\kwl\sherj\md0923394\70D78-shr-RepairPlans.dgn

USER NAME = Jeff.Sherer	DESIGNED -	REVISED -
	DRAWN -	REVISED -
	CHECKED -	REVISED -
PLOT DATE = 9/18/2024	DATE -	REVISED -

STATE OF ILLINOIS
DEPARTMENT OF TRANSPORTATION

PROPOSED DECK CROSS-SECTION
S.N. 010-0208

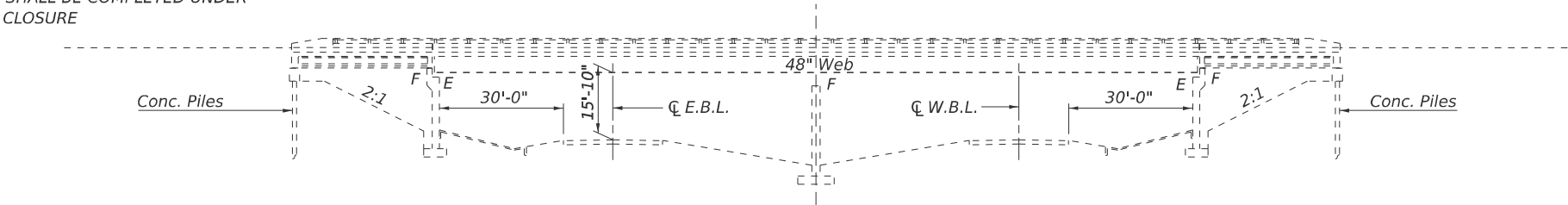
SCALE: NONE SHEET 1 OF 1 SHEETS STA. TO STA.

F.A.I. RTE.	SECTION	COUNTY	TOTAL SHEETS	SHEET NO.
74	(10-4-1HB-1)BR	CHAMPAIGN	23	6
CONTRACT NO. 70D78				
ILLINOIS FED. AID PROJECT				

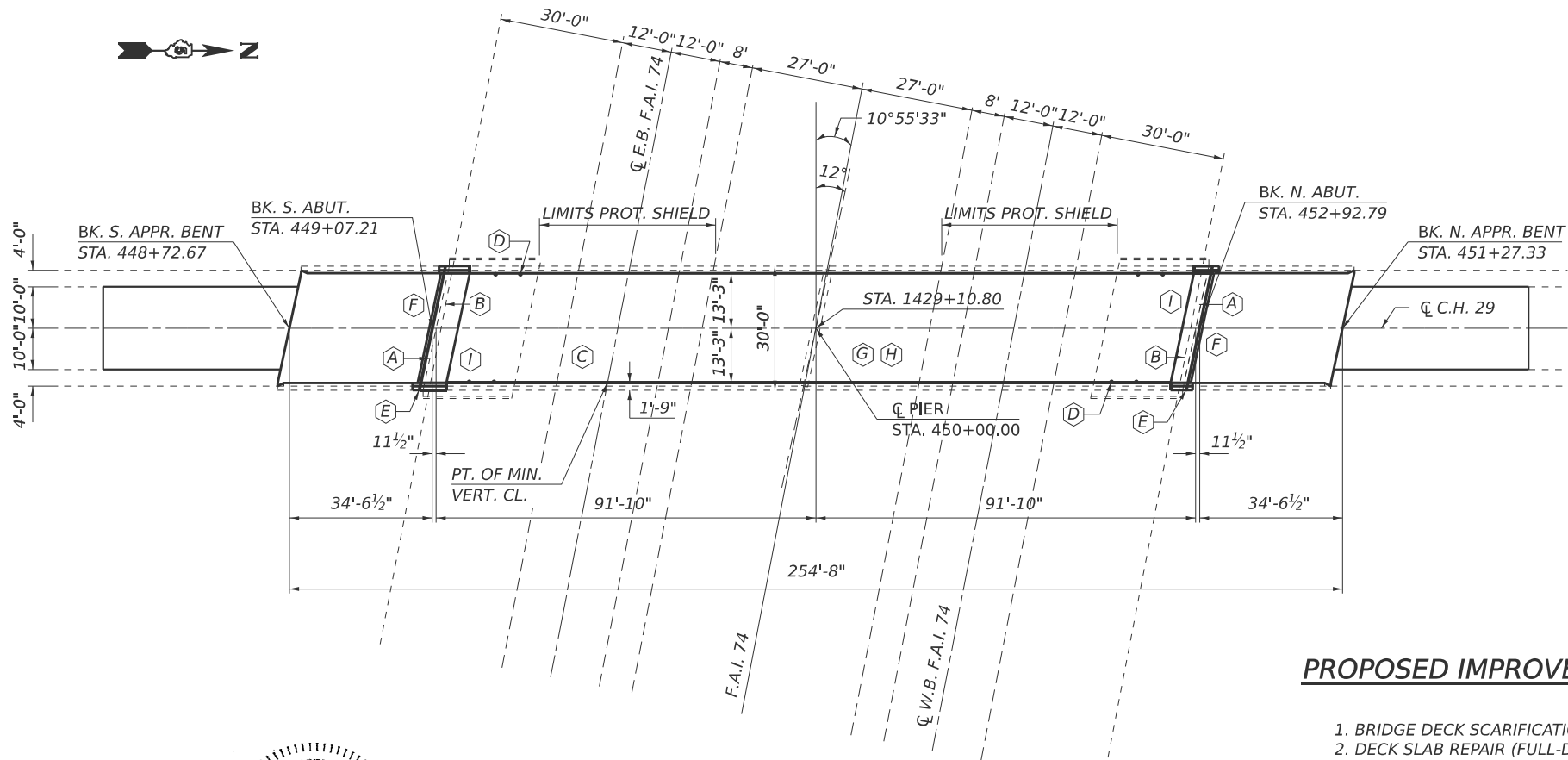
S.N. 010-0208 WAS BUILT IN 1969 AS FAI-74 (I-74), SECTION 10-4-1HB-1 AT STATION 1429+10.80 IN CHAMPAIGN COUNTY. THE STRUCTURE HAS A BACK-TO-BACK ABUTMENT LENGTH OF 185'-7", TOTAL STRUCTURE LENGTH OF 254'-8", OUT-TO-OUT WIDTH OF 30'-0", BRIDGE ROADWAY WIDTH OF 26'-6", AND AN APPROACH ROADWAY WIDTH OF 20'-0".

SEE PROPOSED IMPROVEMENTS ON THIS SHEET

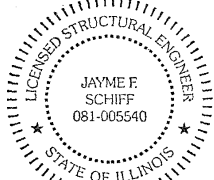
WORK SHALL BE COMPLETED UNDER ROAD CLOSURE



ELEVATION



PLAN



EXPIRES 11-30-2026

Jayme F. Schiff

- (A) STRUCTURAL STEEL REPAIR (ALL BEAM ENDS)
- (B) REPLACE ALL END DIAPHRAGMS
- (C) DECKS SLAB REPAIR (FULL-DEPTH)
- (D) FLOOR DRAINS
- (E) PREFORMED JOINT STRIP SEAL
- (F) ELASTOMERIC BEARINGS WITH STEEL EXTENSION
- (G) BRIDGE DECK SCARIFICATION
- (H) BRIDGE DECK CONCRETE OVERLAY
- (I) ABUTMENT REPAIRS

PROPOSED IMPROVEMENTS

1. BRIDGE DECK SCARIFICATION $\frac{3}{4}$ ".
2. DECK SLAB REPAIR (FULL-DEPTH).
3. CONCRETE REMOVAL AT ABUTMENTS, DECK ENDS.
4. STRUCTURAL STEEL REPAIR AT ALL BEAM ENDS.
5. REMOVE AND REPLACE BEARINGS AT ABUTMENTS.
6. STRUCTURAL REPAIR OF CONCRETE AT SELECT LOCATIONS.
7. PLACE BRIDGE DECK CONCRETE OVERLAY $2\frac{1}{2}$ ".
8. Apply protective coat to bridge deck.

* NEW CONCRETE AND OVERLAY

GENERAL NOTES

PLAN DIMENSIONS AND DETAILS HAVE BEEN TAKEN FROM EXISTING STRUCTURE AND ARE SUBJECT TO NOMINAL CONSTRUCTION VARIATIONS. THE CONTRACTOR SHALL FIELD VERIFY EXISTING DIMENSIONS AND DETAILS AFFECTING NEW CONSTRUCTION AND MAKE NECESSARY APPROVED ADJUSTMENTS PRIOR TO CONSTRUCTION OR ORDERING OF MATERIALS. SUCH VARIATIONS SHALL NOT BE CAUSE FOR ADDITIONAL COMPENSATION FOR A CHANGE IN SCOPE OF WORK. HOWEVER, THE CONTRACTOR WILL BE PAID FOR THE QUANTITY ACTUALLY FURNISHED AT THE UNIT PRICE BID FOR THE WORK.

PRIOR TO POURING NEW CONCRETE DECK, ALL HEAVY OR LOOSE RUST, LOOSE MILL SCALE, AND OTHER LOOSE OR POTENTIALLY DETRIMENTAL FOREIGN MATERIAL SHALL BE REMOVED FROM THE SURFACE IN CONTACT WITH CONCRETE. TIGHTLY ADHERED PAINT MAY REMAIN UNLESS OTHERWISE NOTED. REMOVAL SHALL BE ACCOMPLISHED BY METHODS THAT WILL NOT DAMAGE THE STEEL AND THE COST WILL BE INCLUDED IN THE PAY ITEM COVERING REMOVAL OF THE EXISTING CONCRETE.

REINFORCEMENT BARS DESIGNATED (E) SHALL BE EPOXY COATED

EXISTING REINFORCEMENT BARS EXTENDING INTO THE REMOVAL AREA SHALL BE CLEANED, STRAIGHTENED AND INCORPORATED INTO THE NEW CONSTRUCTION. ANY REINFORCEMENT BARS THAT ARE DAMAGED DURING CONCRETE REMOVAL SHALL BE REPLACED WITH AN APPROVED BAR SPLICER OR ANCHORAGE SYSTEM AT THE CONTRACTOR'S EXPENSE. COST INCLUDED WITH CONCRETE REMOVAL.

PROTECTIVE COAT SHALL BE APPLIED TO ALL NEW CONCRETE SUPERSTRUCTURE AND ALL NEW CONCRETE OVERLAYS AS SPECIFIED IN ARTICLE 503.19 OF THE STANDARD SPECIFICATIONS.

SYNTHETIC FIBERS SHALL BE INCLUDED IN THE BRIDGE DECK CONCRETE OVERLAY SPECIFIED. SEE SPECIAL PROVISIONS.

ALL STRUCTURAL STEEL SHALL CONFORM TO AASHTO CLASSIFICATION M-270 GR. 36, UNLESS OTHERWISE NOTED.

FASTENERS SHALL BE ASTM F 3125 GRADE A325 TYPE 1. FASTENERS SHALL BE HOT DIPPED GALVANIZED. SEE SPECIAL PROVISION FOR "HOT DIP GALVANIZING FOR STRUCTURAL STEEL". BOLTS $\frac{3}{4}$ " ϕ , HOLES $1\frac{5}{16}$ " ϕ , UNLESS OTHERWISE NOTED.

DIAPHRAGM CONNECTION HOLES SHALL BE $1\frac{5}{16}$ " ϕ FOR $\frac{3}{4}$ " ϕ BOLTS. TWO HARDENED WASHERS SHALL BE REQUIRED AT DIAPHRAGM CONNECTIONS.

THE EXISTING STRUCTURAL STEEL COATING CONTAINS LEAD. THE CONTRACTOR SHALL TAKE APPROPRIATE PRECAUTIONS TO DEAL WITH THE PRESENCE OF LEAD ON THIS PROJECT.

EXISTING STRUCTURAL STEEL THAT WILL BE IN CONTACT WITH NEW STRUCTURAL STEEL SHALL BE CLEANED AND PAINTED PRIOR TO ERECTION AS REQUIRED BY THE SPECIAL PROVISION "CLEANING AND PAINTING CONTACT SURFACE AREAS OF EXISTING STEEL STRUCTURES", AND THE STANDARD SPECIFICATIONS. COST INCLUDED WITH STRUCTURAL STEEL REPAIR.

ALL NEW STRUCTURAL STEEL AND BEARING ASSEMBLIES SHALL BE HOT-DIPPED GALVANIZED. SEE SPECIAL PROVISION FOR "HOT DIP GALVANIZING FOR STRUCTURAL STEEL".

TOTAL BILL OF MATERIALS

ITEM	UNIT	TOTAL
CONCRETE REMOVAL	CU. YD.	24.9
PROTECTIVE SHIELD	SQ. YD.	251.0
FLOOR DRAINS	EACH	8.0
CONCRETE STRUCTURES	CU. YD.	15.2
CONCRETE SUPERSTRUCTURE	CU. YD.	13.3
BRIDGE DECK GROOVING	SQ. YD.	691.0
* PROTECTIVE COAT	SQ. YD.	762.4
FURNISHING AND ERECTING STRUCTURAL STEEL	POUND	3,810.0
REINFORCEMENT BARS, EPOXY COATED	POUND	4,470.0
PREFORMED JOINT STRIP SEAL	FOOT	62.0
ELASTOMERIC BEARING ASSEMBLY, TYPE I	EACH	8.0
ANCHOR BOLTS, 1"	EACH	16.0
JACK AND REMOVE EXISTING BEARINGS	EACH	8.0
STRUCTURAL STEEL REMOVAL	POUND	2,330.0
STRUCTURAL STEEL REPAIR	POUND	3,130.0
BRIDGE DECK SCARIFICATION $\frac{3}{4}$ "	SQ. YD.	716.0
BRIDGE DECK FLY ASH OR GGBF SLAG CONCRETE OVERLAY $2\frac{1}{2}$ "	SQ. YD.	716.0
STRUCTURAL REPAIR OF CONCRETE LESS THAN OR EQUAL TO 5"	SQ. YD.	97.0
DECK SLAB REPAIR (FULL-DEPTH TYPE II)	SQ. YD.	57.0
POLYMER CONCRETE	CU. FT.	4.0

MODEL: GPE SHEET [Sheet]
FILE NAME: c:\p\work\wtd\sherojmd092394\70D78-shr-RepairPlans.dgn

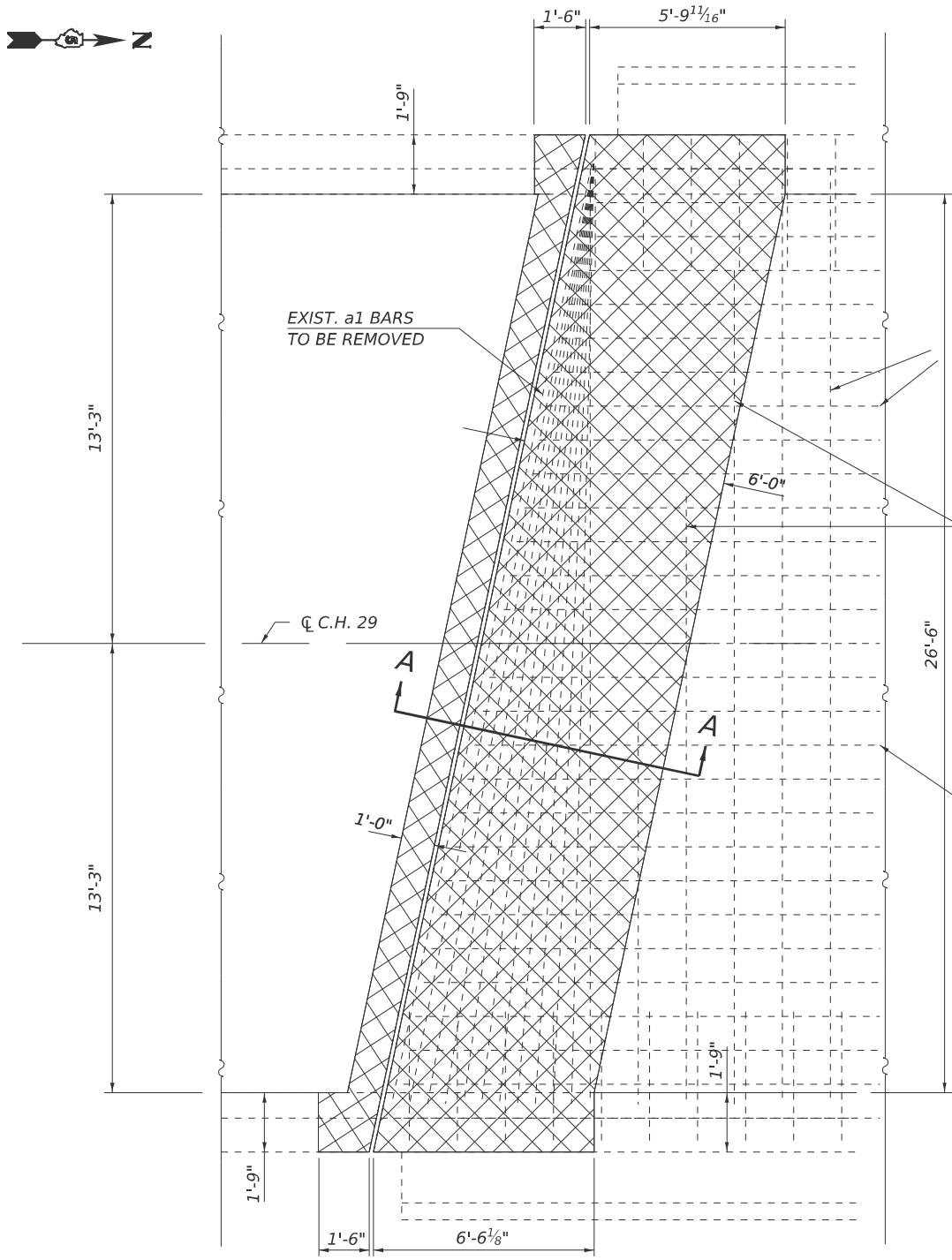
USER NAME = Jeff.Sherer	DESIGNED -	REVISED -
	DRAWN -	REVISED -
	CHECKED -	REVISED -
PLOT DATE = 12/9/2024	DATE -	REVISED -

STATE OF ILLINOIS
DEPARTMENT OF TRANSPORTATION

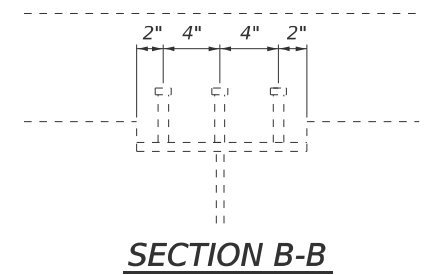
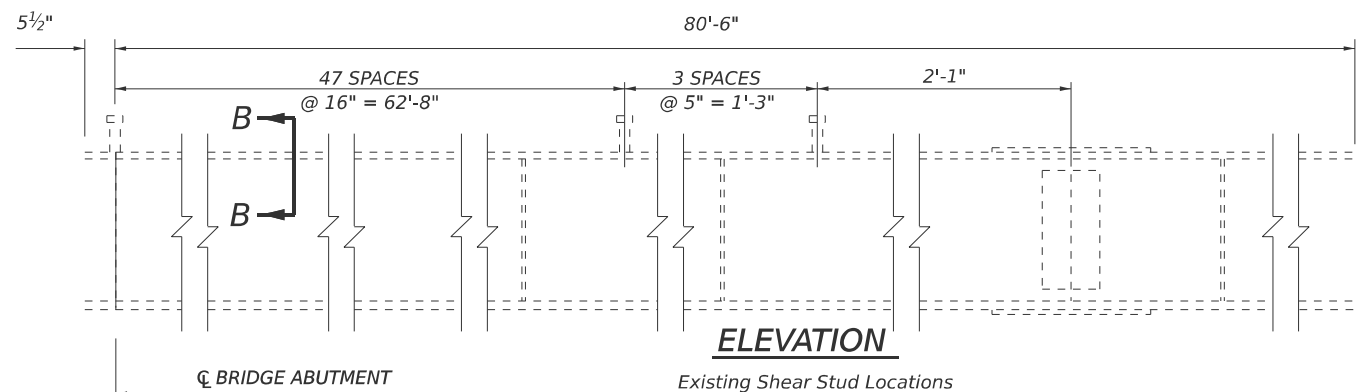
GENERAL PLAN AND ELEVATION
S.N. 010-0208

SCALE: 1" = 20' SHEET 1 OF 13 SHEETS STA. TO STA.

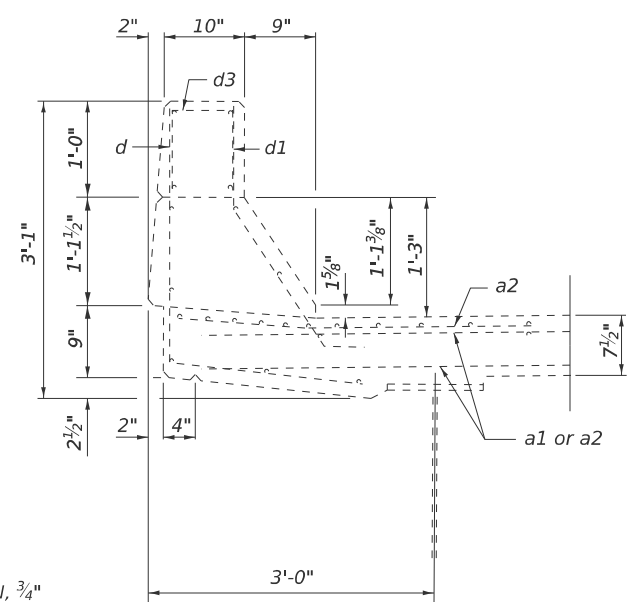
F.A.I. RTE.	SECTION	COUNTY	TOTAL SHEETS	SHEET NO.
74	(10-4-1HB-1)BR	CHAMPAIGN	23	7
CONTRACT NO. 70D78				
ILLINOIS FED. AID PROJECT				



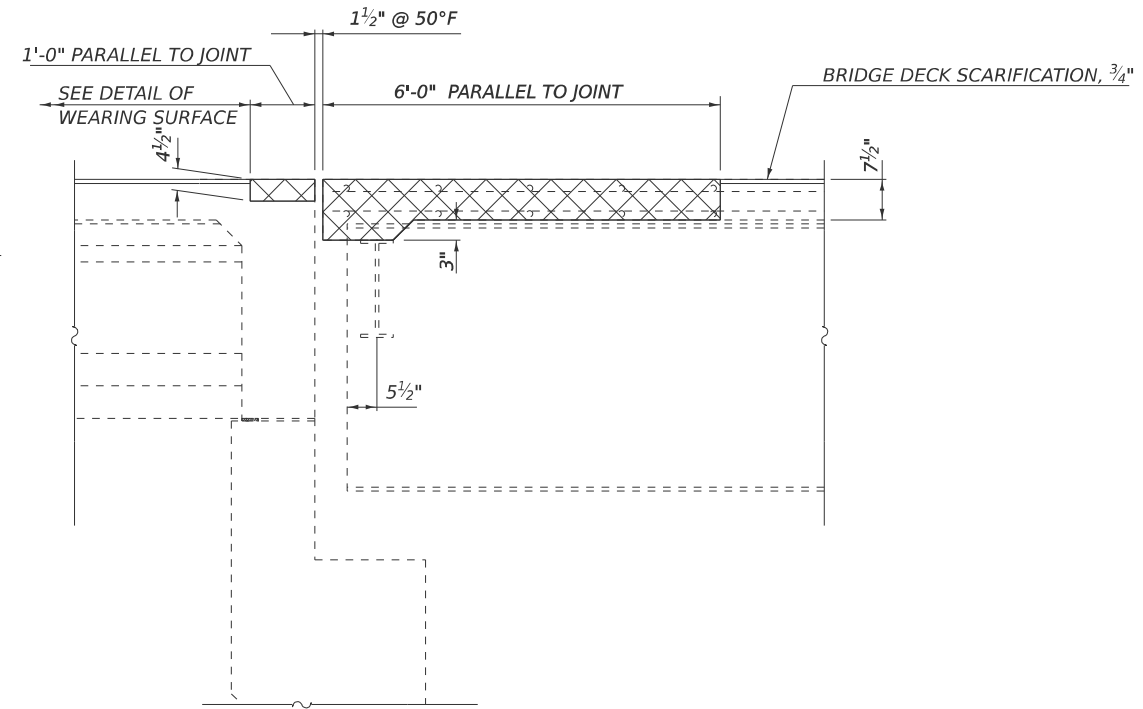
PLAN VIEW
(SOUTH ABUTMENT)



SECTION B-B



SECTION THRU PARAPET



SECTION A-A



BILL OF MATERIALS
SOUTH ABUTMENT

ITEM	UNIT	TOTAL
CONCRETE REMOVAL	CU. YD.	6.8

MODEL: DECK END REM (Sheet)
FILE NAME: c:\paw_work\wildsherer\jmd0923394\70D78-shr-RepairPlans.dgn

USER NAME = Jeff.Sherer	DESIGNED -	REVISED -
	DRAWN -	REVISED -
	CHECKED -	REVISED -
PLOT DATE = 12/9/2024	DATE -	REVISED -

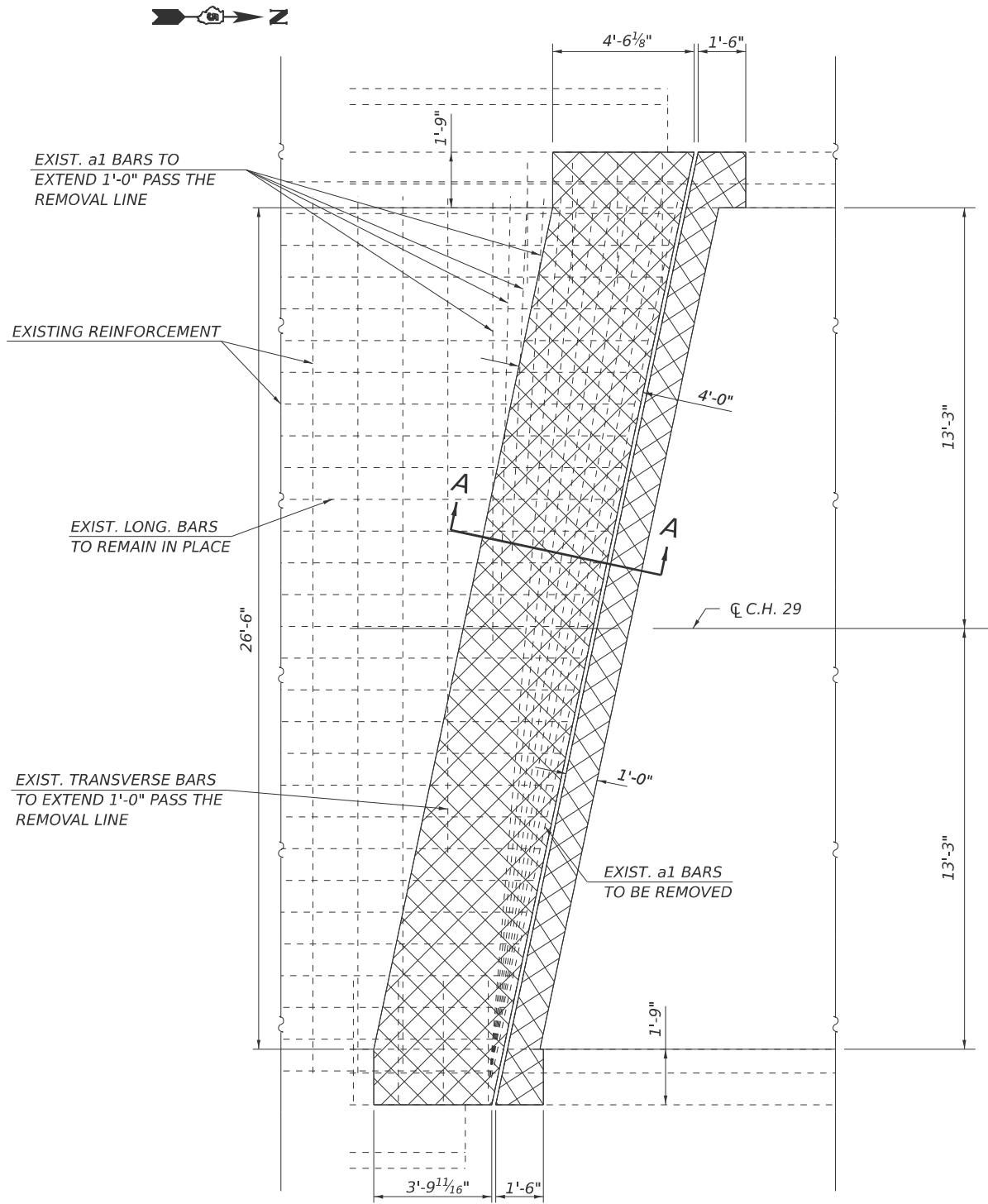
STATE OF ILLINOIS
DEPARTMENT OF TRANSPORTATION

DECK END REMOVAL DETAIL
S.N. 010-0208

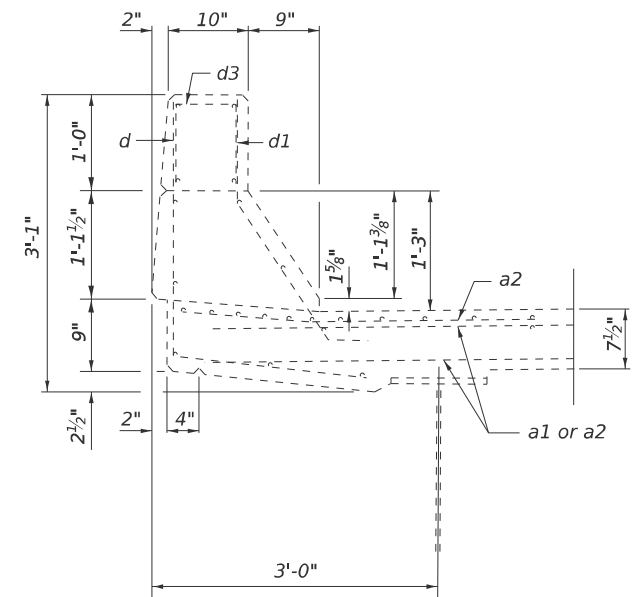
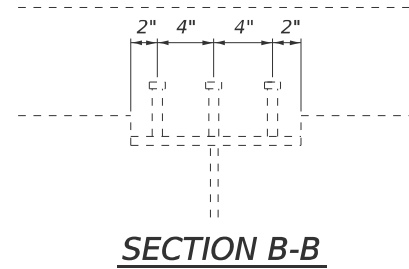
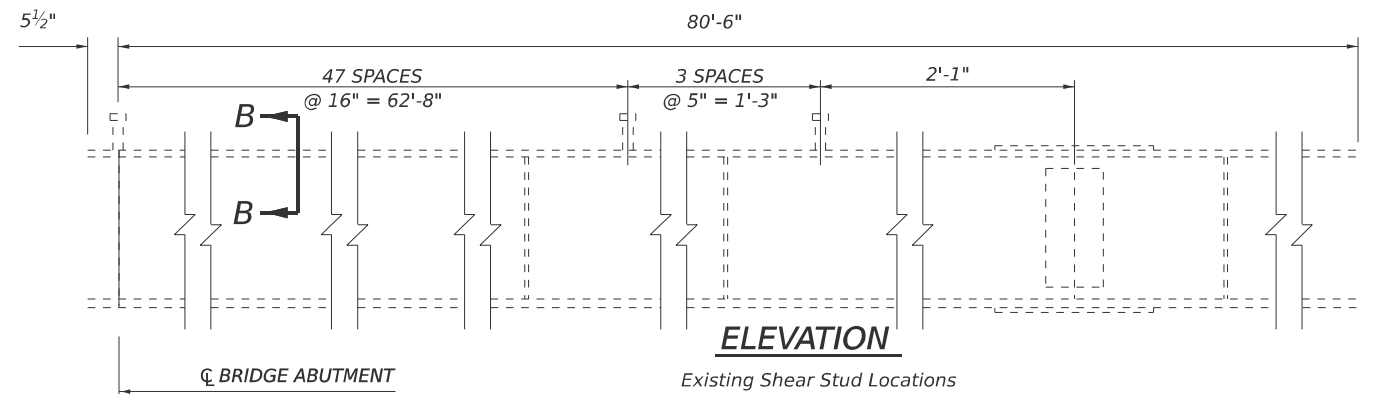
SCALE: NONE SHEET 2 OF 13 SHEETS STA. TO STA.

F.A.I. RTE.	SECTION	COUNTY	TOTAL SHEETS	SHEET NO.
74	(10-4-1HB-1)BR	CHAMPAIGN	23	8
CONTRACT NO. 70D78				
ILLINOIS FED. AID PROJECT				

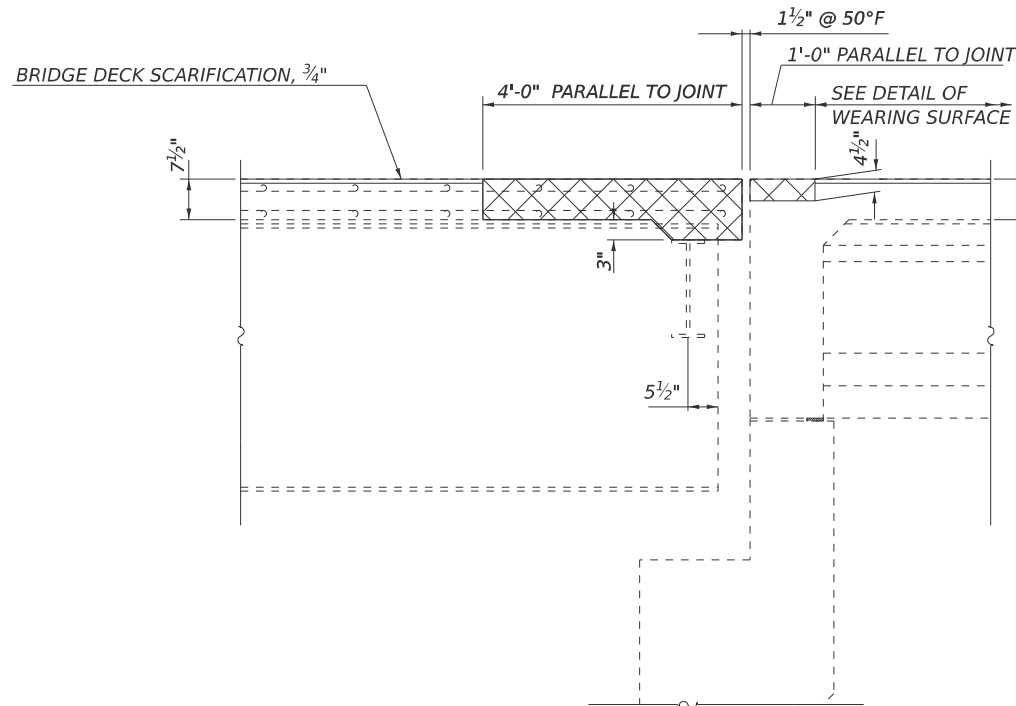
MODEL: DECK END REM-1 (Sheet)
FILE NAME: c:\paw_work\kwl\stereofmd0923394\70D78-shr-RepairPlans.dgn



PLAN VIEW
(NORTH ABUTMENT)



SECTION THRU PARAPET



CONCRETE REMOVAL

BILL OF MATERIALS
NORTH ABUTMENT

ITEM	UNIT	TOTAL
CONCRETE REMOVAL	CU. YD.	4.9

USER NAME = Jeff.Sherer	DESIGNED -	REVISED -
	DRAWN -	REVISED -
	CHECKED -	REVISED -
PLOT DATE = 12/9/2024	DATE -	REVISED -

STATE OF ILLINOIS
DEPARTMENT OF TRANSPORTATION

DECK END REMOVAL DETAIL
S.N. 010-0208

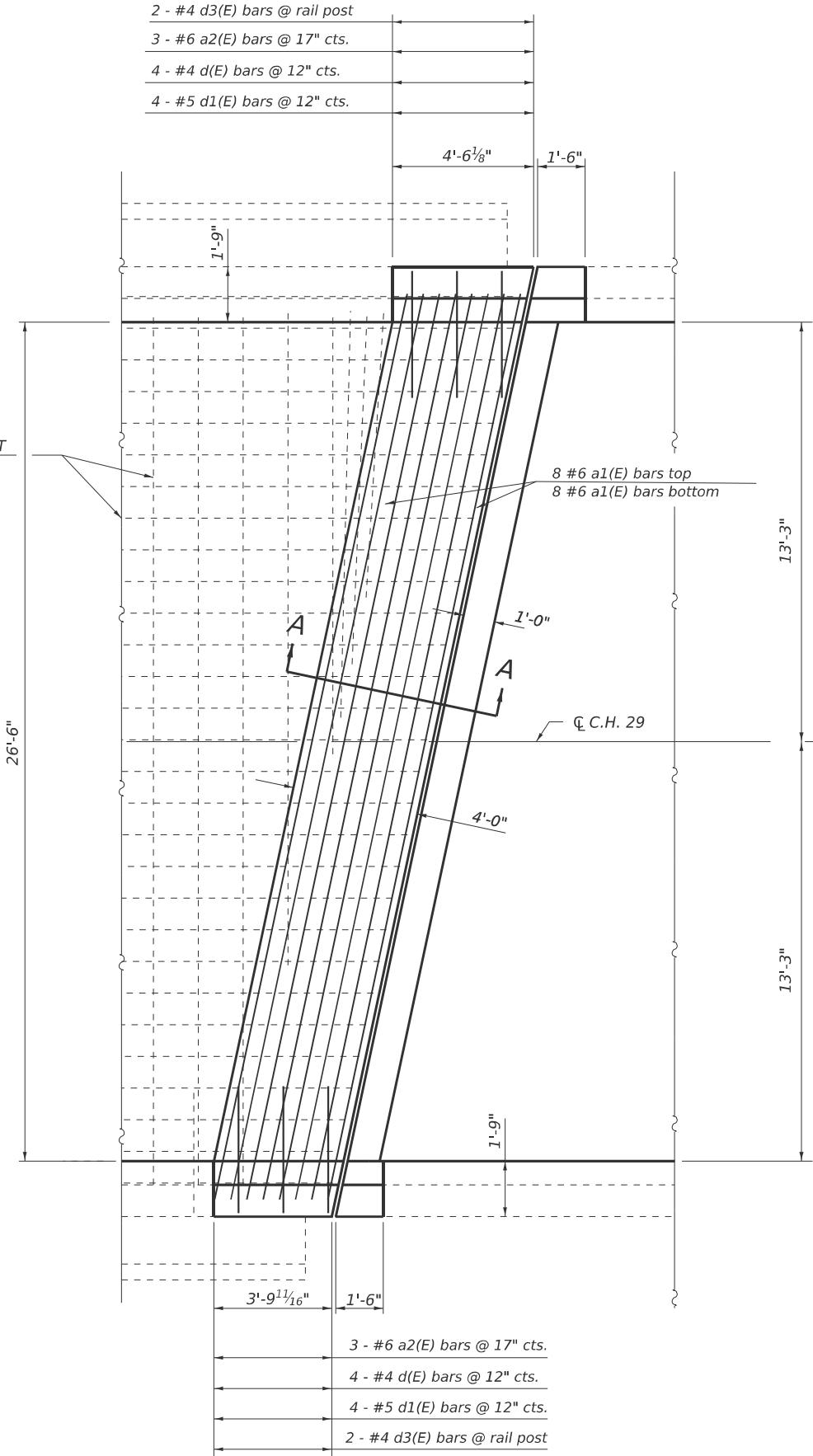
SCALE: SHEET 3 OF 13 SHEETS STA. TO STA.

F.A.I. RTE.	SECTION	COUNTY	TOTAL SHEETS	SHEET NO.
74	(10-4-1HB-1)BR	CHAMPAIGN	23	9
CONTRACT NO. 70D78				
ILLINOIS FED. AID PROJECT				

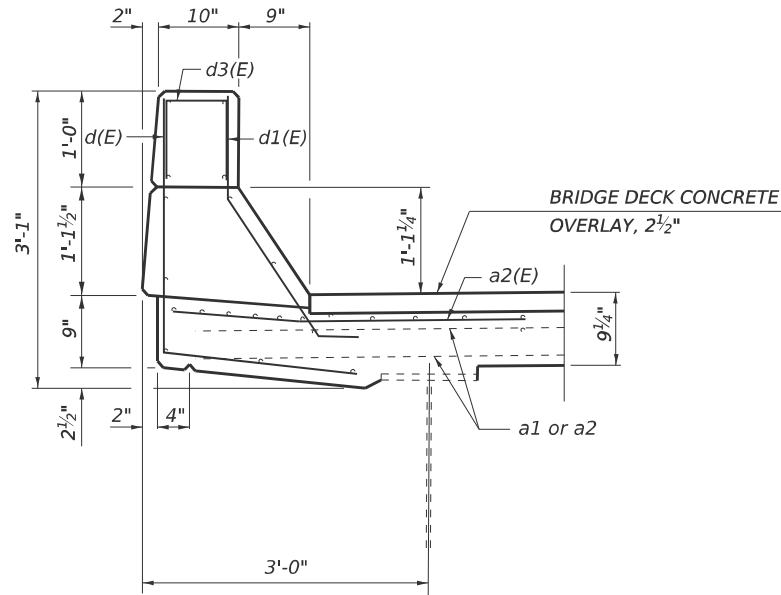


- 2 - #4 d3(E) bars @ rail post
- 3 - #6 a2(E) bars @ 17" cts.
- 4 - #4 d(E) bars @ 12" cts.
- 4 - #5 d1(E) bars @ 12" cts.

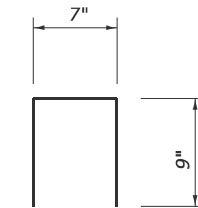
EXISTING REINFORCEMENT



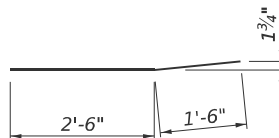
PLAN VIEW
(NORTH ABUTMENT)



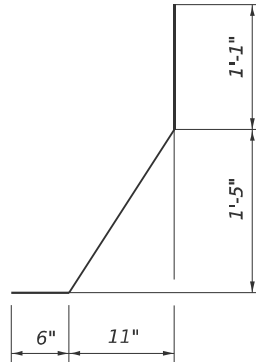
SECTION THRU PARAPET



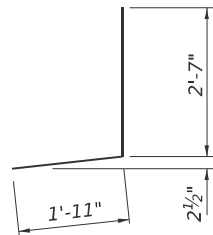
BAR d3(E)



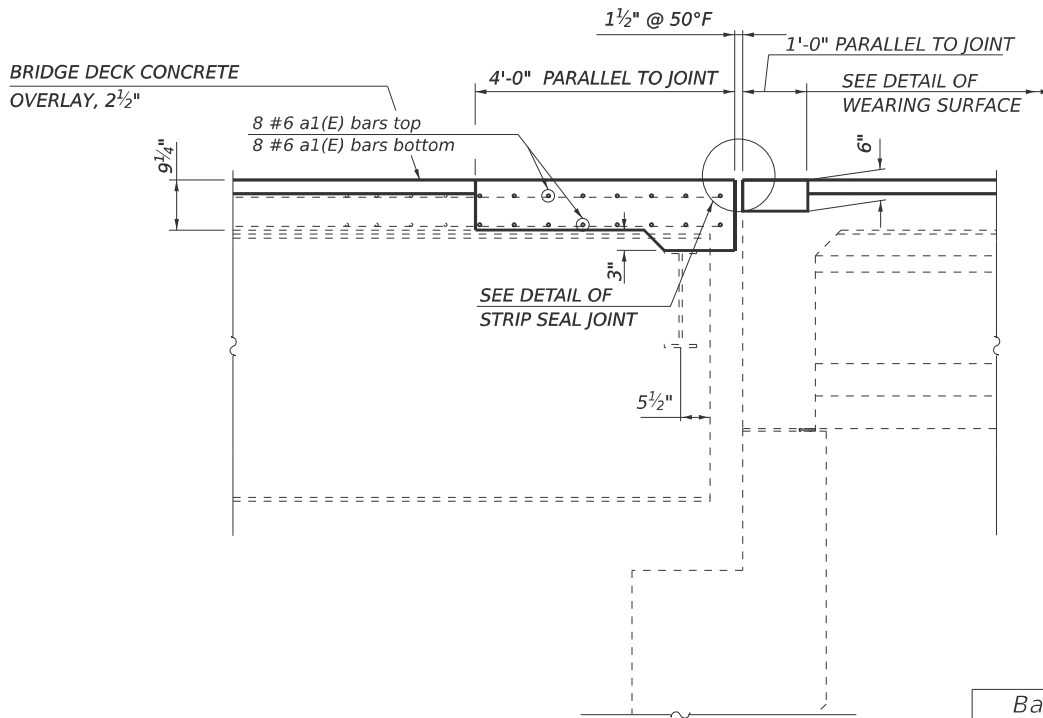
BAR a2(E)



BAR d1(E)



BAR d(E)



SECTION A-A

BILL OF MATERIALS
NORTH ABUTMENT

Bar	No.	Size	Length	Shape
a1(E)	16	#6	29'-3"	
a2(E)	6	#6	4'-0"	
d(E)	8	#4	4'-6"	
d1(E)	8	#5	3'-3"	
d3(E)	4	#4	2'-1"	
CONCRETE SUPERSTRUCTURE			CU. YD.	5.6
REINFORCEMENT BARS, EPOXY COATED			POUND	800.0

MODEL: DECK END CONSTR-1 [Sheet]
FILE NAME: c:\paw\work\sherej\md0923394\70D78-shr-RepairPlans.dgn

USER NAME = Jeff.Sherer	DESIGNED -	REVISED -
	DRAWN -	REVISED -
	CHECKED -	REVISED -
PLOT DATE = 12/9/2024	DATE -	REVISED -

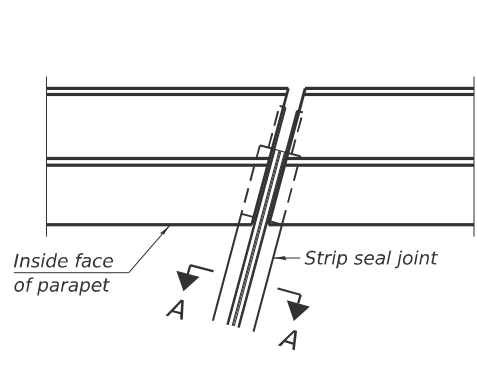
STATE OF ILLINOIS
DEPARTMENT OF TRANSPORTATION

DECK END CONSTRUCTION DETAIL
S.N. 010-0208

SCALE: NONE SHEET 5 OF 13 SHEETS STA. TO STA.

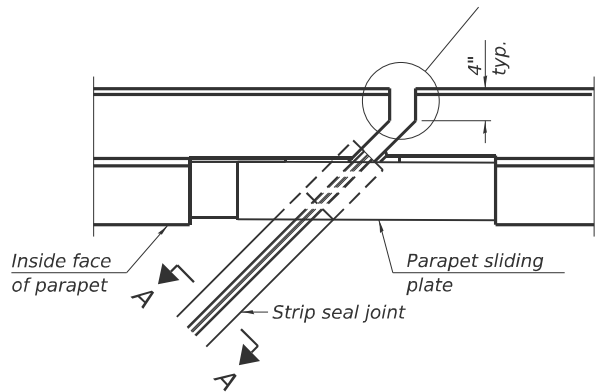
F.A.I. RTE.	SECTION	COUNTY	TOTAL SHEETS	SHEET NO.
74	(10-4-1HB-1)BR	CHAMPAIGN	23	11
CONTRACT NO. 70D78				
ILLINOIS FED. AID PROJECT				

MODEL: STRIP SEAL JOINT (Sheet)
FILE NAME: c:\pwworking\dstherg\mdd092394\70D78-sh1-RepairPlans.dgn

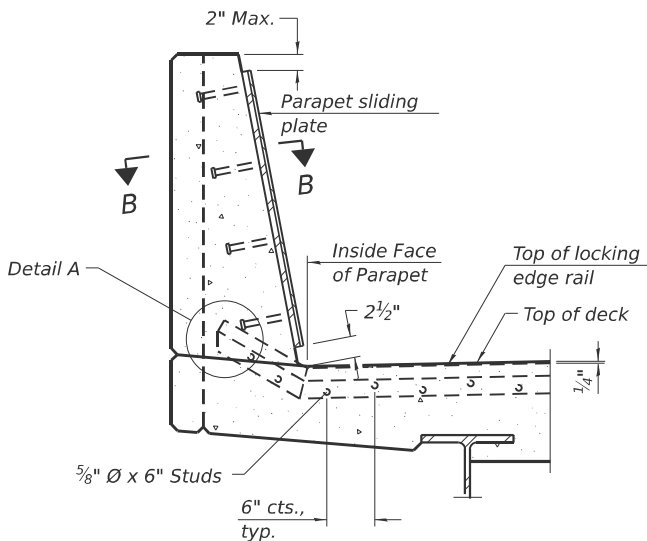


FOR SKEWS $\leq 30^\circ$

PLAN AT PARAPET

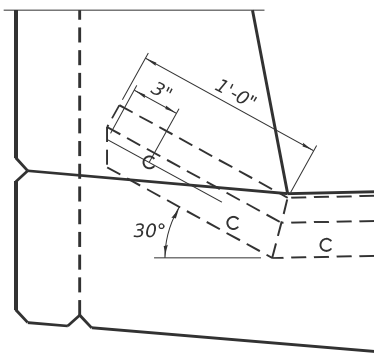


FOR SKEWS $> 30^\circ$

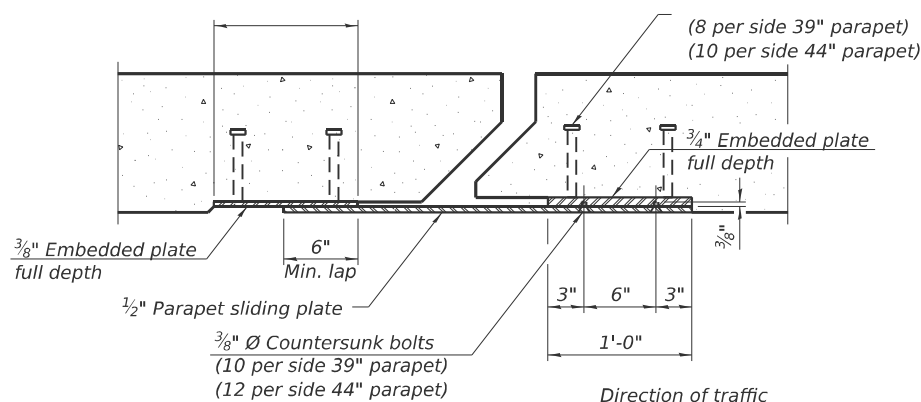


SECTION AT PARAPET

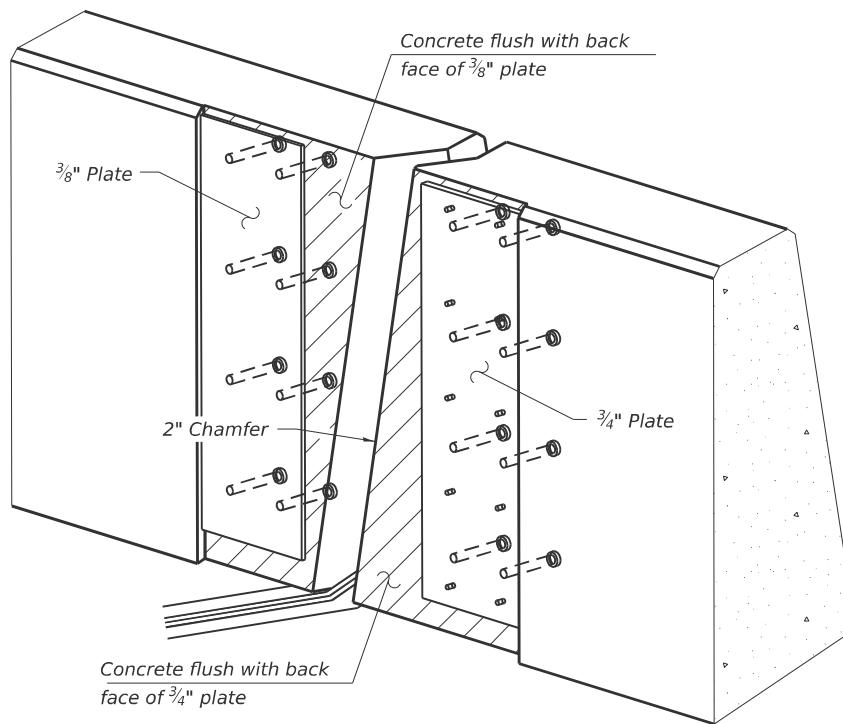
(Skews $> 30^\circ$ shown. Skews $\leq 30^\circ$ similar except as shown in plan view.)



DETAIL A

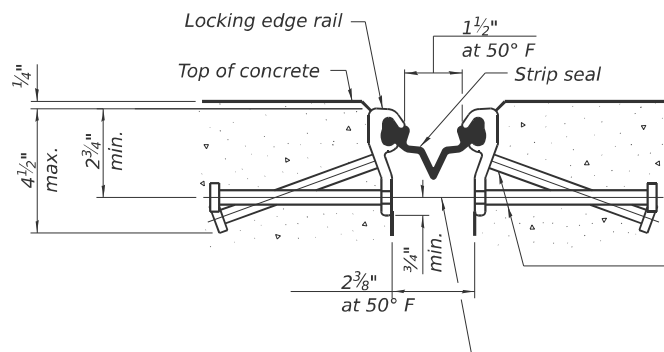


SECTION B-B



TRIMETRIC VIEW

(Showing embedded plates only)



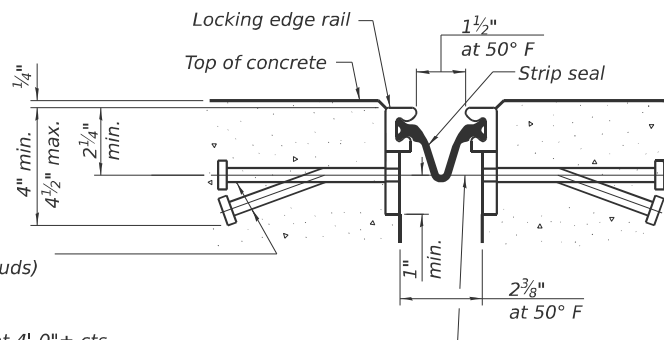
SHOWING ROLLED RAIL JOINT

* $\frac{5}{8}$ " \varnothing x 6" studs @ 6" cts. (alternate angled/bent studs with horizontal studs)

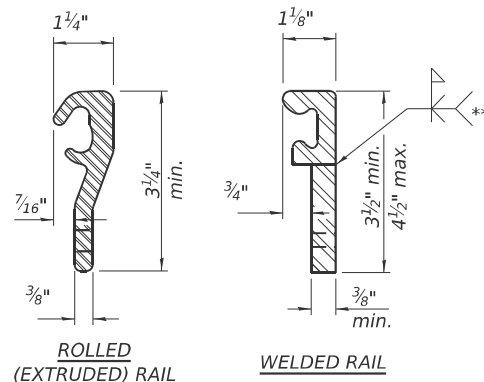
$\frac{3}{8}$ " \varnothing threaded rods in $\frac{7}{16}$ " \varnothing holes at 4'-0" \pm cts. for holding the proper joint opening based on the temperature during the deck pour. Place to miss studs. All rods shall be burned, or sawed off flush with the plates after concrete is set.

SECTION A-A

* Granular or solid flux filled headed studs conforming to Article 1006.32 of the Std. Specs., automatically end welded.

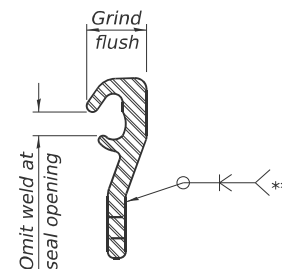


SHOWING WELDED RAIL JOINT



LOCKING EDGE RAILS

** Back gouge not required if complete joint penetration is verified by mock-up.



LOCKING EDGE RAIL SPLICE

The inside of the locking edge rail groove shall be free of weld residue. Rolled rail shown, welded rail similar.

BILL OF MATERIAL

Item	Unit	Total
Preformed Joint Strip Seal	Foot	58.5

EJ-SS

5-15-2023

USER NAME = Jeff.Sherer	DESIGNED -	REVISED -
	DRAWN -	REVISED -
	CHECKED -	REVISED -
PLOT DATE = 9/18/2024	DATE -	REVISED -

STATE OF ILLINOIS
DEPARTMENT OF TRANSPORTATION

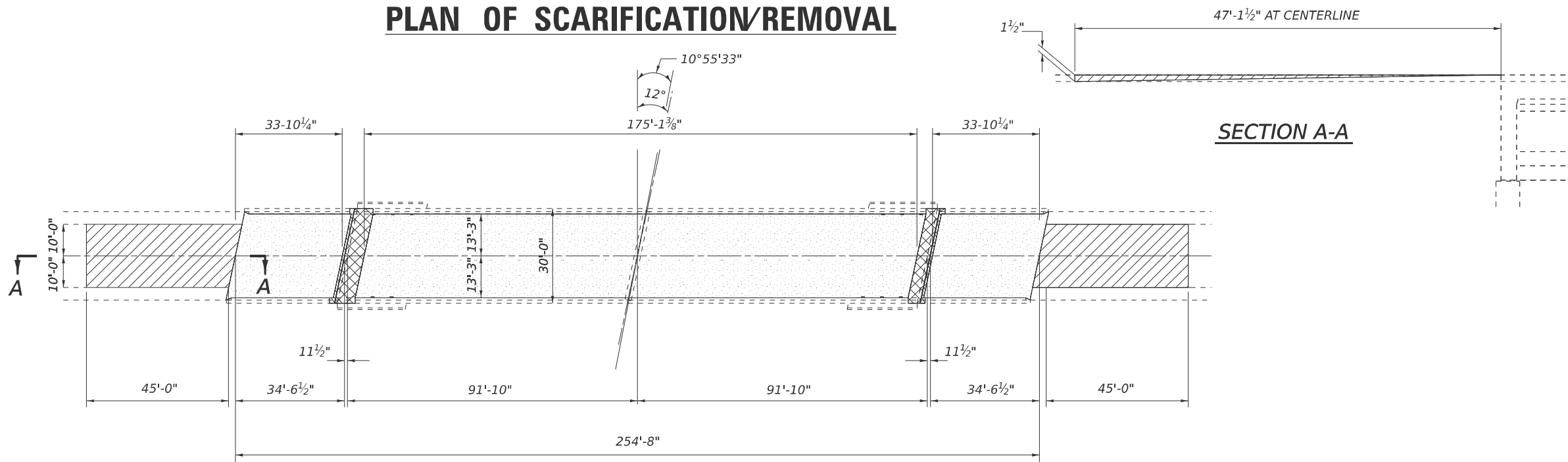
DETAIL OF PREFORMED JOINT STRIP SEAL
S.N. 010-0208

SCALE: NONE SHEET 6 OF 13 SHEETS STA. TO STA.

F.A.I. RTE.	SECTION	COUNTY	TOTAL SHEETS	SHEET NO.
74	(10-4-1HB-1)BR	CHAMPAIGN	23	12
				CONTRACT NO. 70D78
ILLINOIS FED. AID PROJECT				



PLAN OF SCARIFICATION/REMOVAL



SECTION A-A

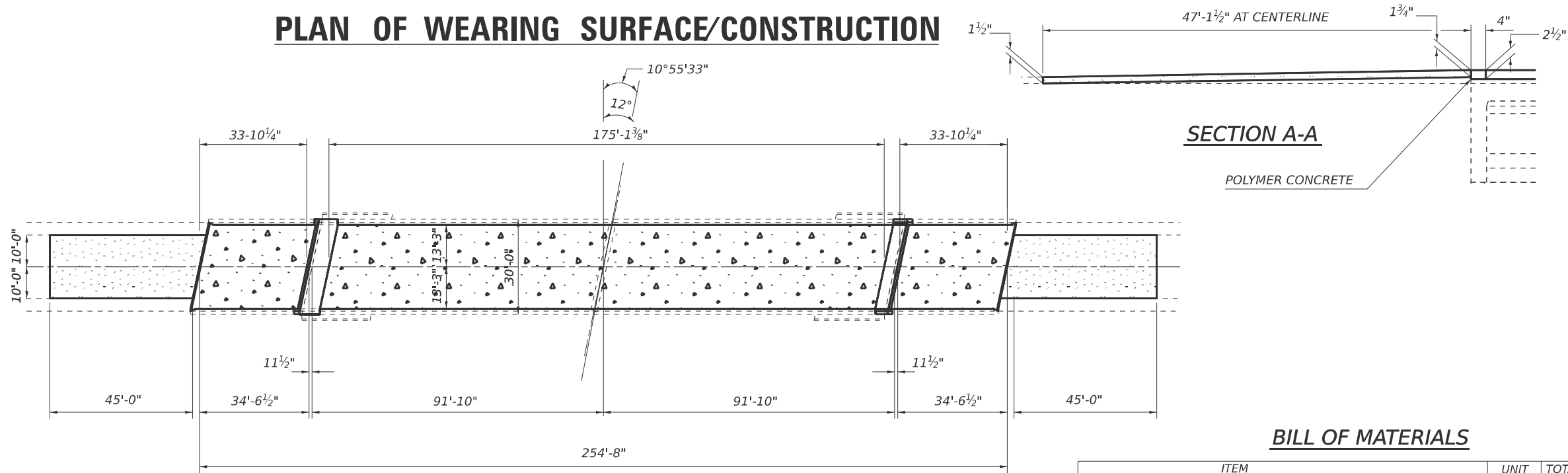
BILL OF MATERIALS



ITEM	UNIT	TOTAL
HMA SURFACE REMOVAL - BUTT JOINT	SQ. YD.	210.0
BRIDGE DECK SCARIFICATION 3/4"	C.U. YD.	716.0



PLAN OF WEARING SURFACE/CONSTRUCTION



SECTION A-A

BILL OF MATERIALS



ITEM	UNIT	TOTAL
HMA SC IL 9.5 C N50	TON	21.0
BRIDGE DECK GROOVING	SQ. YD.	691.0
PROTECTIVE COAT	SQ. YD.	703.0
BRIDGE DECK FLY ASH OR GGBF SLAG CONCRETE OVERLAY 2 1/2"	SQ. YD.	716.0
POLYMER CONCRETE	CU. FT.	4.0

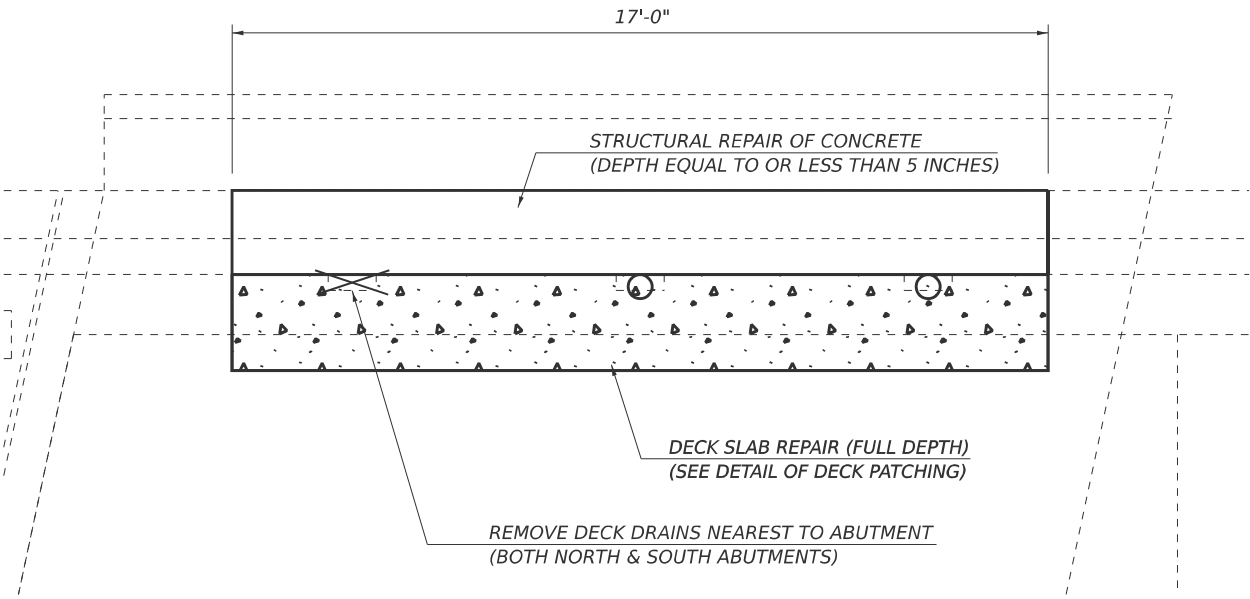
MODEL: WEARING SURFACE PLAN (Sheet)
FILE NAME: c:\p\work\jw\jsh\sherej\mid092394\70D78-shr-RepairPlans.dgn

USER NAME = Jeff.Sherer	DESIGNED -	REVISED -
	DRAWN -	REVISED -
	CHECKED -	REVISED -
PLOT DATE = 12/9/2024	DATE -	REVISED -

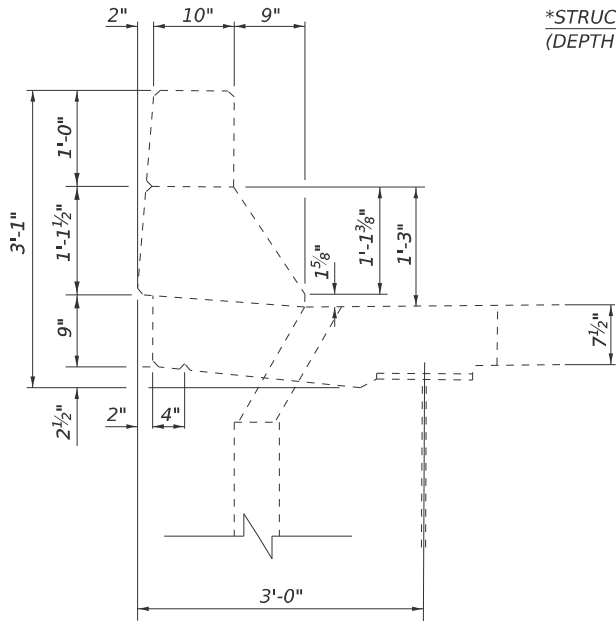
STATE OF ILLINOIS
DEPARTMENT OF TRANSPORTATION

DETAIL OF WEARING SURFACE S.N. 010-0208			
SCALE: NONE	SHEET 7	OF 13 SHEETS	STA. TO STA.

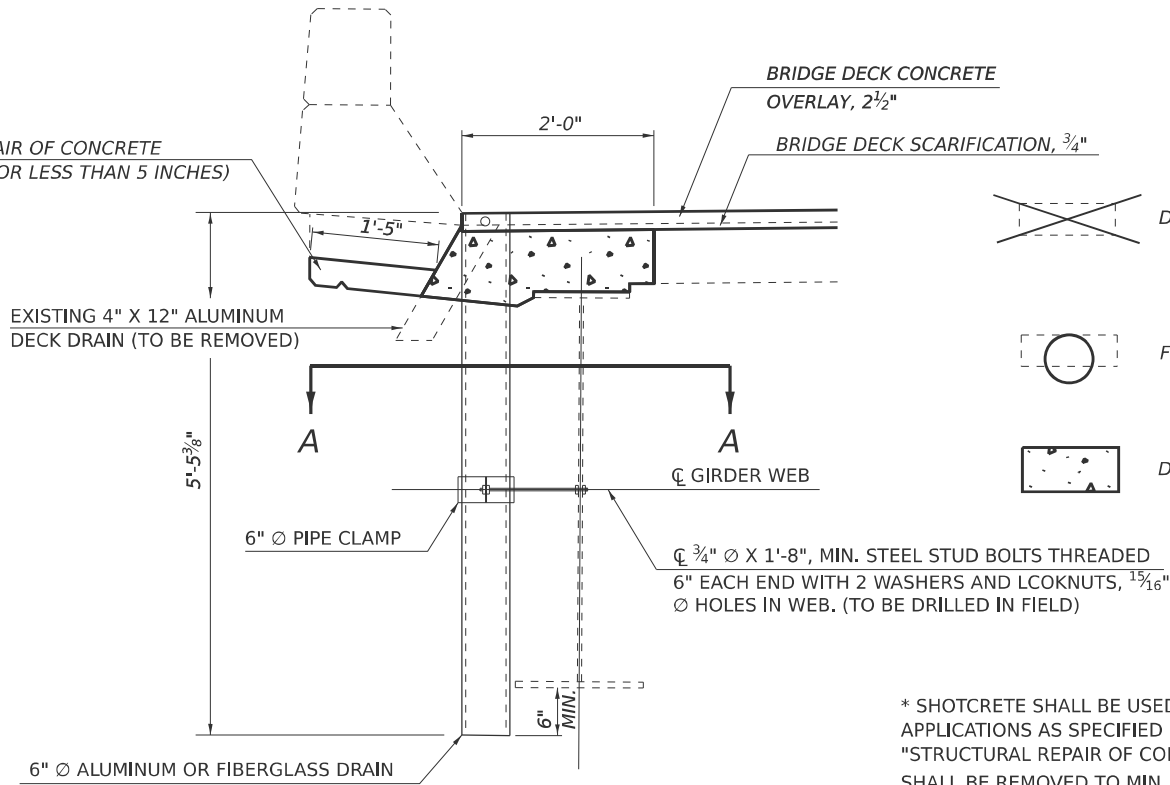
F.A.I. RTE.	SECTION	COUNTY	TOTAL SHEETS	SHEET NO.
74	(10-4-1HB-1)BR	CHAMPAIGN	23	13
CONTRACT NO. 70D78				
ILLINOIS FED. AID PROJECT				



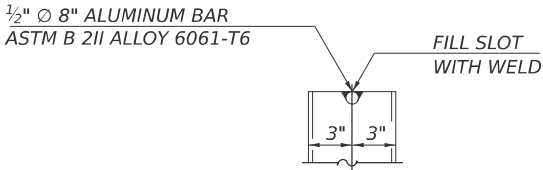
PLAN VIEW
(SOUTH ABUTMENT)
(NORTH ABUTMENT SIMILAR)



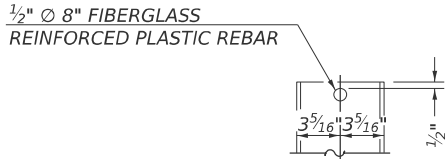
SECTION AT EXISTING DRAIN



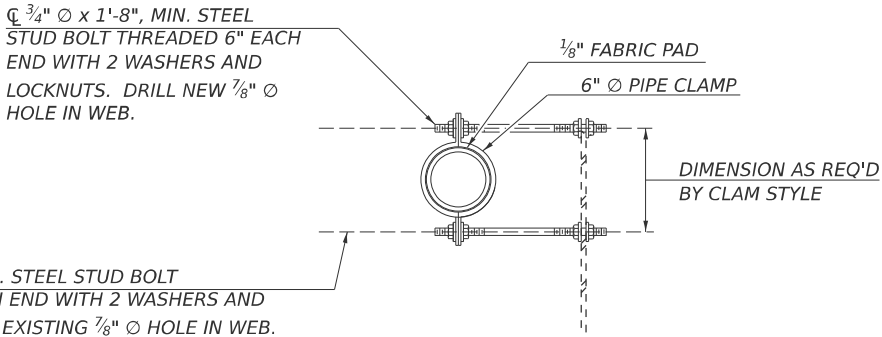
SECTION AT PROPOSED DRAIN



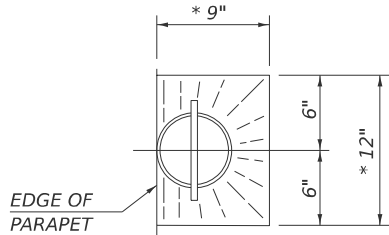
**ALUMINUM
TUBE**



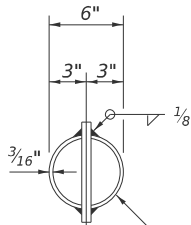
**FIBERGLASS
PIPE**



SECTION A-A
SHOWING PIPE CLAMP
ANCHORAGE STYLE



TOP PLAN
* SLOPE TO DRAIN



TOP PLAN
ALUMINUM TUBE SHOWN

NOTES:

FLOOR DRAINS NEED NOT BE PAINTED.

FIBERGLASS PIPE SHALL CONFORM TO ASTM D 2996, WITH SHORT-TIME RUPTURE STRENGTH HOOP TENSILE STRESS OF 30,000 P.S.I. MINIMUM.

SEE DETAIL OF DECK SLAB REPAIR

COST TO REMOVE EXISTING FLOOR DRAINS AND EXTENSIONS ARE INCLUDED WITH DECK SLAB REPAIR.

THE CLAMPING DEVICE SHALL BE GALVANIZED ACCORDING TO AASHTO M 232. COST INCLUDED WITH FLOOR DRAINS.

* ALL DIMENSIONS SHALL BE FIELD VERIFIED BY THE CONTRACTOR PRIOR TO ORDERING OF MATERIALS.

BILL OF MATERIALS
TWO ABUTMENTS

ITEM	UNIT	TOTAL
FLOOR DRAINS	EACH	8.0
STRUCTURAL REPAIR OF CONCRETE	SQ. FT.	97.0

MODEL: FLOOR DRAINS (Sheet)
FILE NAME: c:\pawork\wikolshere\pmd0929394\70D78-shr-RepairPlans.dgn

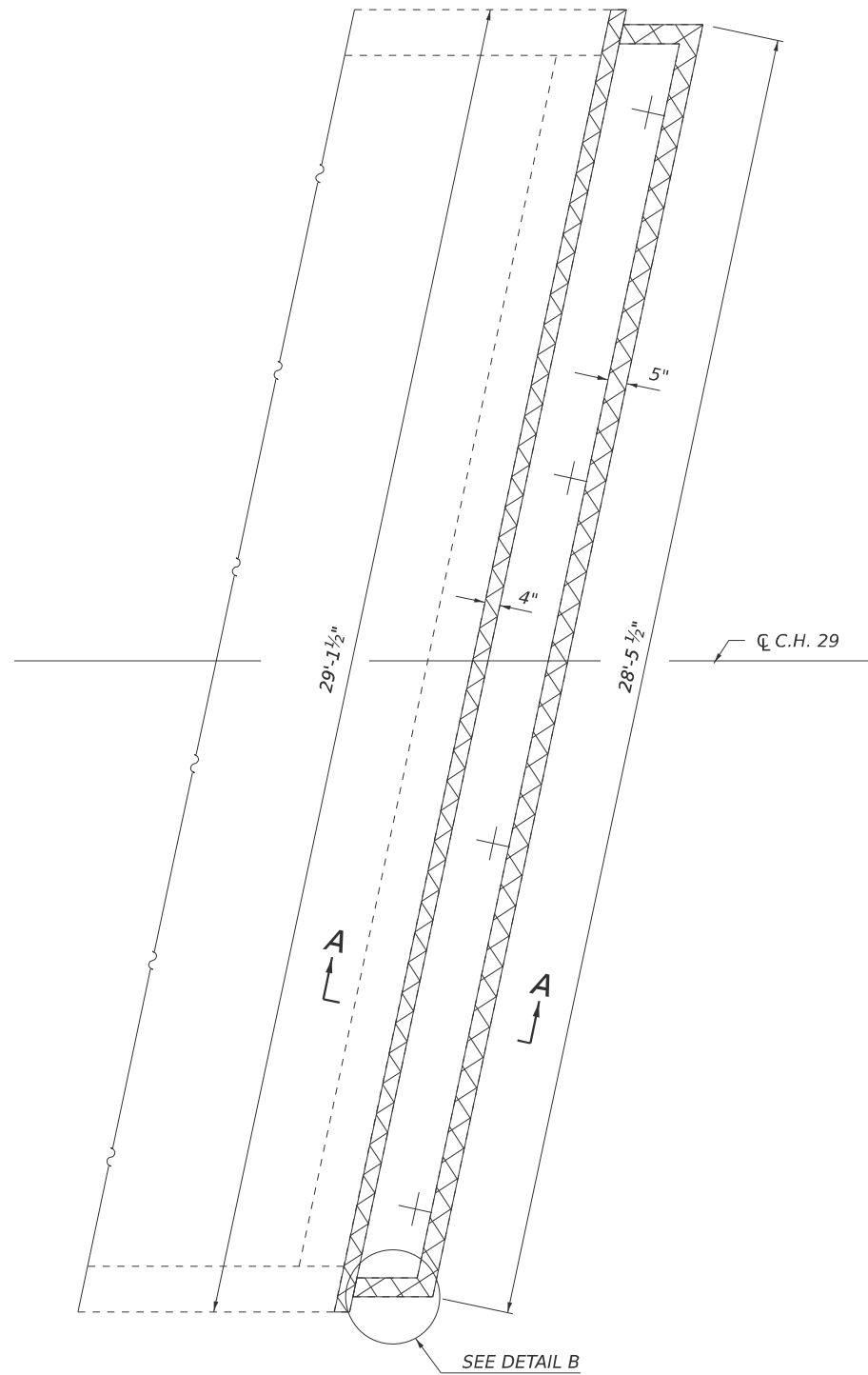
USER NAME = Jeff.Sherer	DESIGNED -	REVISED -
	DRAWN -	REVISED -
	CHECKED -	REVISED -
PLOT DATE = 10/16/2024	DATE -	REVISED -

STATE OF ILLINOIS
DEPARTMENT OF TRANSPORTATION

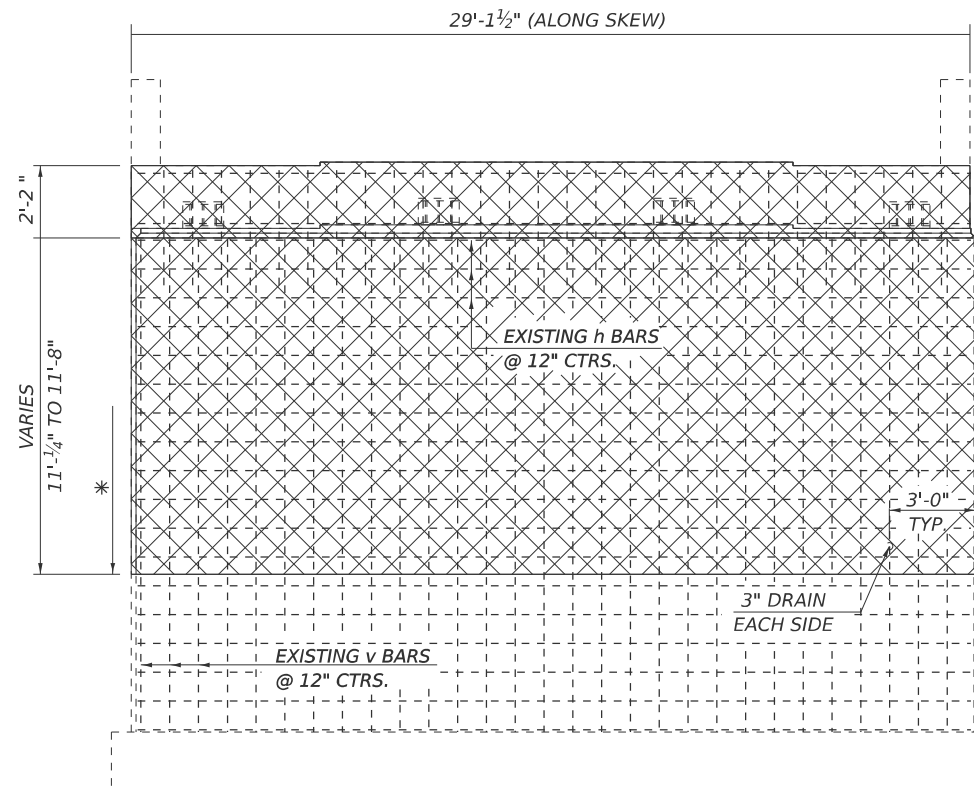
DETAIL OF FLOOR DRAINS
S.N. 010-0208

SCALE: NONE SHEET 8 OF 13 SHEETS STA. TO STA.

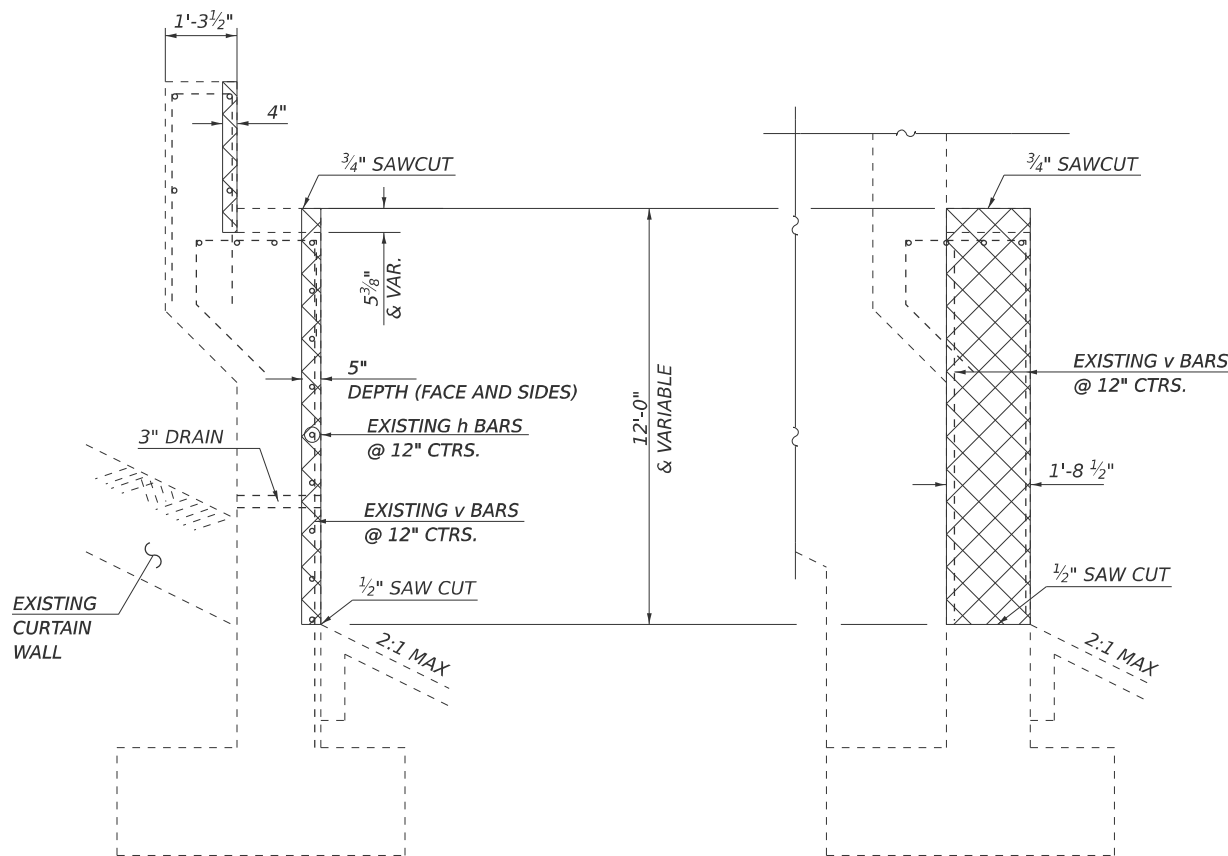
F.A.I. RTE.	SECTION	COUNTY	TOTAL SHEETS	SHEET NO.
74	(10-4-1HB-1)BR	CHAMPAIGN	23	14
CONTRACT NO. 70D78				
ILLINOIS FED. AID PROJECT				



REMOVAL PLAN
(SOUTH ABUTMENT SHOWN)
NORTH ABUTMENT SIMILAR



ELEVATION



SECTION A-A

DETAIL B

 **CONCRETE REMOVAL**

BILL OF MATERIALS
TWO ABUTMENTS

ITEM	UNIT	TOTAL
CONCRETE REMOVAL	CU. FT.	13.2

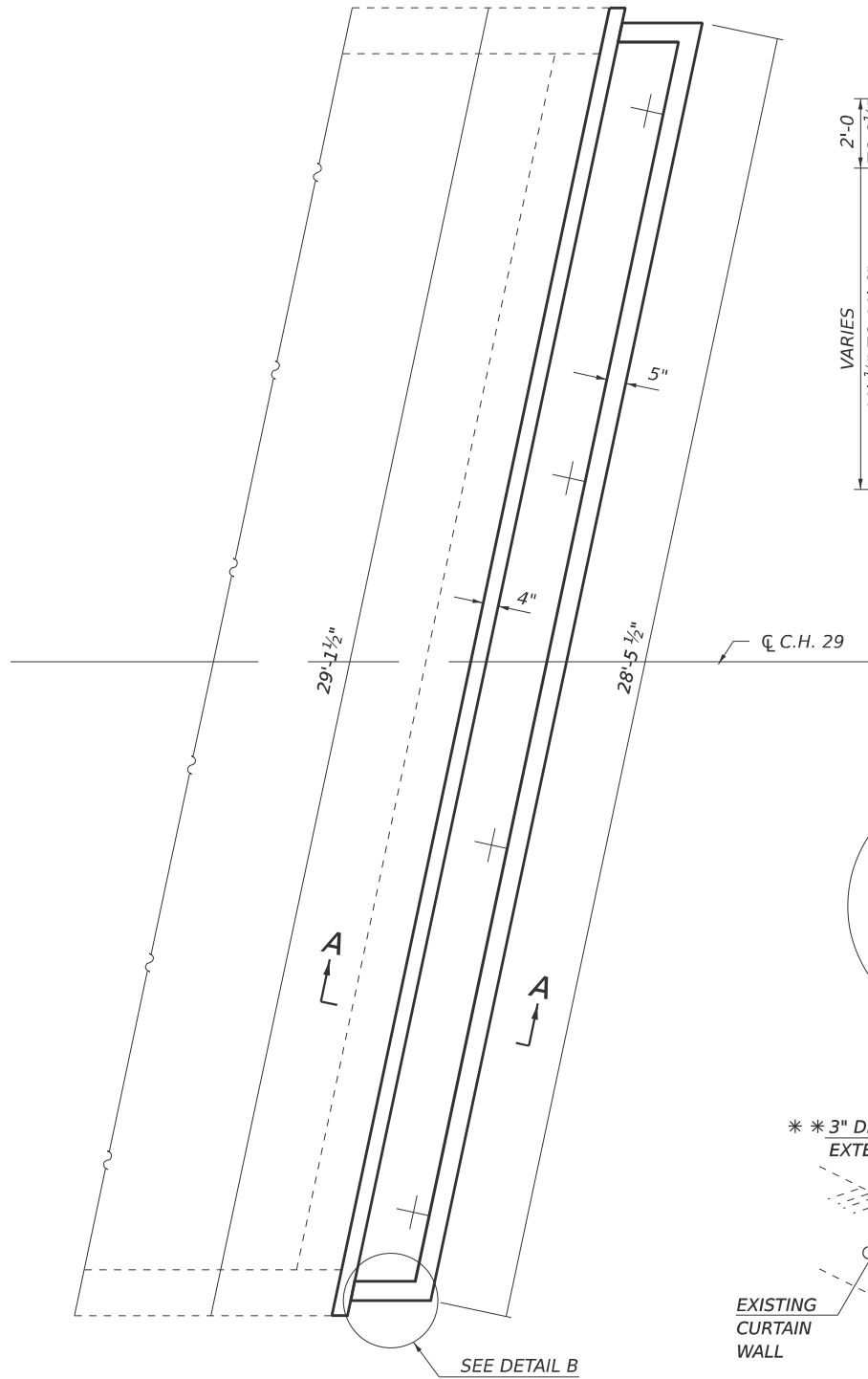
STATE OF ILLINOIS
DEPARTMENT OF TRANSPORTATION

DETAIL OF ABUTMENT REMOVAL
S.N. 010-0208

SCALE: NONE SHEET 9 OF 13 SHEETS STA. TO STA.

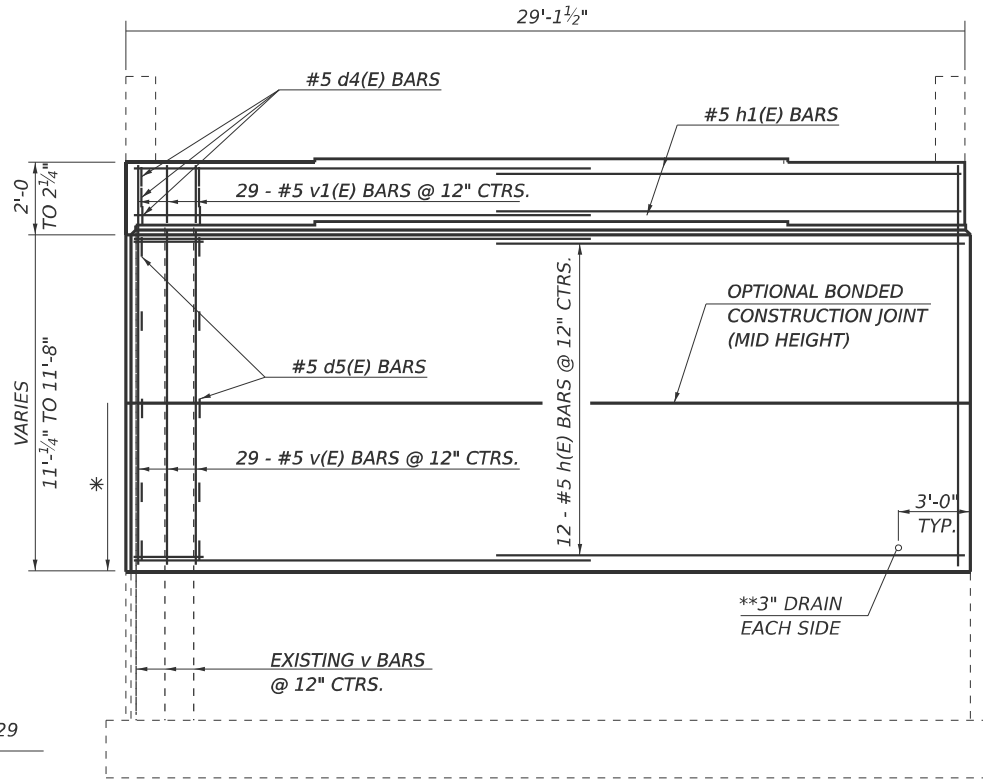
F.A.I. RTE.	SECTION	COUNTY	TOTAL SHEETS	SHEET NO.
74	(10-4-1HB-1)BR	CHAMPAIGN	23	15
CONTRACT NO. 70D78				
ILLINOIS FED. AID PROJECT				

USER NAME = Jeff.Sherer	DESIGNED -	REVISED -
	DRAWN -	REVISED -
	CHECKED -	REVISED -
PLOT DATE = 12/9/2024	DATE -	REVISED -

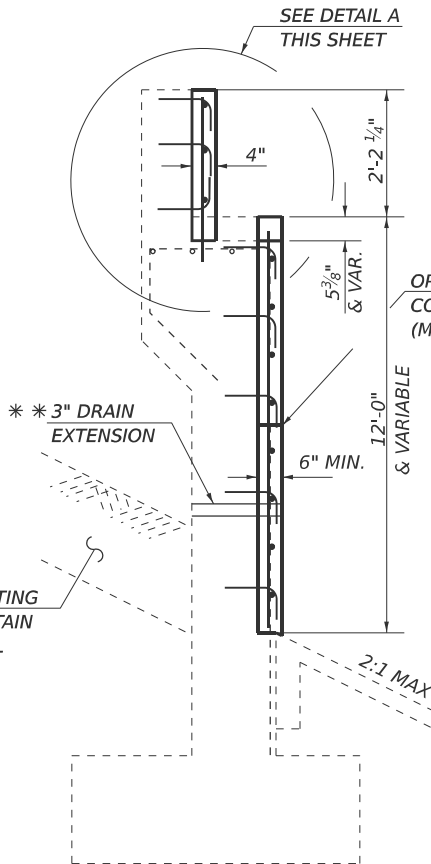


PROPOSED PLAN
(SOUTH ABUTMENT SHOWN)
NORTH ABUTMENT SIMILAR

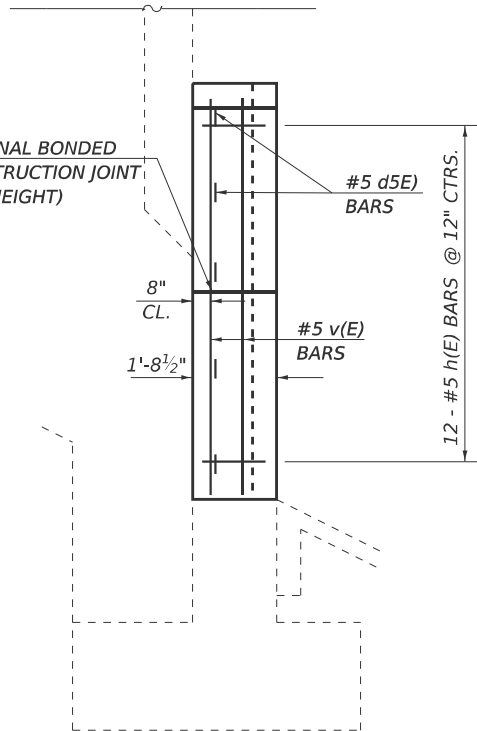
- * CUTOFF HEIGHT OF EXISTING v BARS ABOVE CONCRETE REMOVAL LINE 4'-4"
- * * EXISTING ABUTMENT DRAINS SHALL BE EXTENDED THRU PROPOSED ABUTMENT FACE WITH PVC. ESTIMTED PIPE LENGTH 2'-3" TO EXTEND THRU THE EXISTING ABUTMENT FACE INTO THE VAULTED ABUTMENT. PIPE DRAIN COST INCLUDED WITH CONCRETE STRUCTURES.



ELEVATION

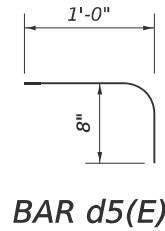


SECTION A-A

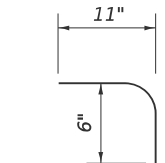


DETAIL B

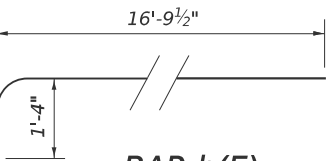
EPOXY GROUT IN 9" MIN. HOLES
ACCORDING TO ARTICLE 584 OF THE
STANDARD SPECIFICATIONS.



BAR d5(E)

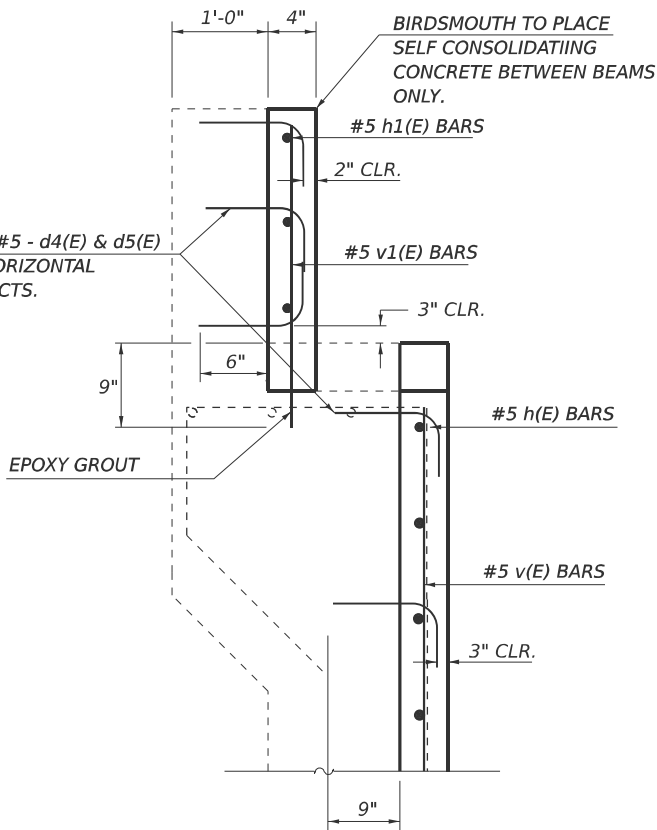


BAR d4(E)



BAR h(E)

Bar	Size	Lap Length
h(E)	#5	2'-7"
v(E)	#5	2'-7" MIN.



DETAIL A

EPOXY GROUT IN 9" MIN. HOLES
ACCORDING TO ARTICLE 584 OF THE
STANDARD SPECIFICATIONS.

NOTES

PLAN DIMENSIONS AND DETAILS RELATIVE TO EXISTING PLANS ARE SUBJECT TO NOMINAL CONSTRUCTION VARIATIONS. THE CONTRACTOR SHALL FIELD VERIFY EXISTING DIMENSIONS AND DETAILS AFFECTING NEW CONSTRUCTION AND MAKE NECESSARY APPROVED ADJUSTMENTS PRIOR TO CONSTRUCTION OR ORDERING OF MATERIALS. SUCH VARIATIONS SHALL NOT BE CAUSE FOR ADDITIONAL COMPENSATION FOR A CHANGE IN SCOPE OF WORK, HOWEVER, THE CONTRACTOR WILL BE PAID FOR THE QUANTITY ACTUALLY FURNISHED AT THE UNIT PRICE BID FOR THE WORK.

FOR FULL-HEIGHT CONSTRUCTION MANDATORY 12" X 12" CUT-OUT POUR HOLES MID-HEIGHT AT 6' CTS. ARE REQUIRED TO ENSURE PROPER CONCRETE CONSOLIDATION AND BONDING TO EXISTING ABUTMENT FACE. THE COST OF EPOXY GROUTING BARS SHALL BE INCLUDED WITH REINFORCEMENT BARS (EPOXY COATED).

REINFORCEMENT BARS SHALL CONFORM TO THE REQUIREMENTS OF ASTM A706 OR GR 60. SEE SPECIAL PROVISIONS.

REINFORCEMENT BARS DESIGNATED (E) SHALL BE EPOXY COATED.

**BILL OF MATERIALS
TWO ABUTMENTS**

Bar	No.	Size	Length	Shape
d4(E)	90.0	#5	1'-5"	
d5(E)	170.0	#5	1'-8"	
h(E)	48.0	#5	18'-0"	
h1(E)	12.0	#5	17'-0"	
v(E)	66.0	#5	11'-1"	
v1(E)	58.0	#5	2'-9"	
CONCRETE STRUCTURES			CU. YD.	15.2
REINFORCEMENT BARS, EPOXY COATED			POUND	2,470.0

MODEL: ABUTMENT CONSTRUCTION (Sheet)
FILE NAME: c:\p\work\kwl\sherep\mid092394\70D78-shr-RepairPlans.dgn

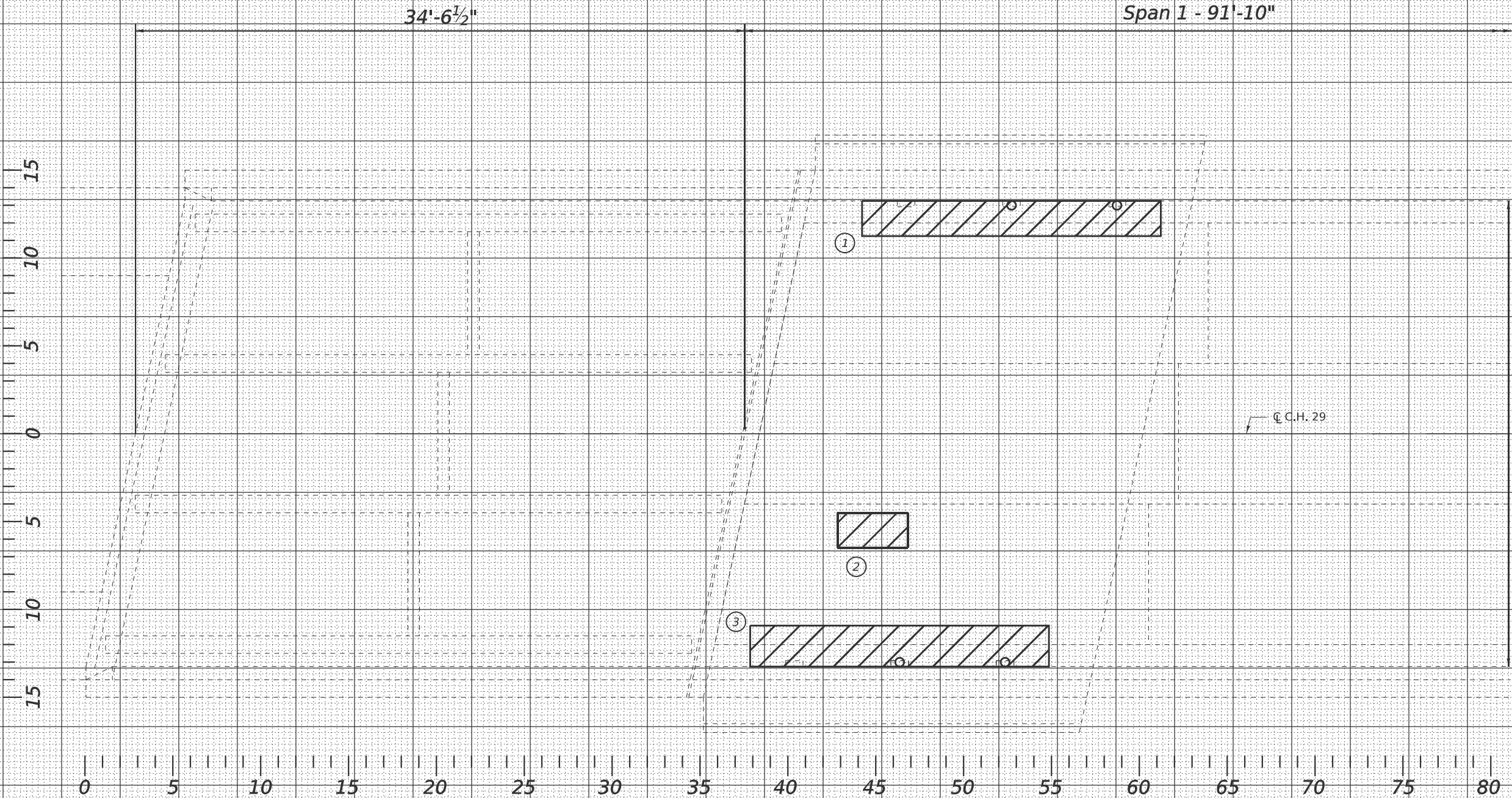
USER NAME = Jeff.Sherer	DESIGNED -	REVISED -
	DRAWN -	REVISED -
	CHECKED -	REVISED -
PLOT DATE = 12/9/2024	DATE -	REVISED -

STATE OF ILLINOIS
DEPARTMENT OF TRANSPORTATION

DETAIL OF ABUTMENT CONSTRUCTION
S.N. 010-0208

SCALE: NONE SHEET 10 OF 13 SHEETS STA. TO STA.

F.A.I. RTE.	SECTION	COUNTY	TOTAL SHEETS	SHEET NO.
74	(10-4-1HB-1BR	CHAMPAIGN	23	16
ILLINOIS FED. AID PROJECT			CONTRACT NO. 70D78	



MODEL: DECK SLAB REPAIR (Sheet)
FILE NAME: c:\pawork\jshero\mud0923394\7DD78-sh1-RepairPlans.dgn

USER NAME	= Jeff.Sherer
DESIGNED	-
DRAWN	-
CHECKED	-
DATE	-
PLOT DATE	= 9/18/2024

DESIGNED	-
DRAWN	-
CHECKED	-
DATE	-

REVISED	-
REVISED	-
REVISED	-
REVISED	-

STATE OF ILLINOIS
DEPARTMENT OF TRANSPORTATION

DETAIL OF DECK SLAB REPAIR S.N. 010-0208			
SCALE: SEE ABOVE	SHEET 11	OF 13 SHEETS	STA. TO STA.

F.A.I. RTE.	SECTION	COUNTY	TOTAL SHEETS	SHEET NO.
74	(10-4-1-1HB-1)BR	CHAMPAIGN	23	17
CONTRACT NO.				
ILLINOIS FED. AID PROJECT				

MODEL: DECK SLAB REPAIR-1 [Sheet]
FILE NAME: c:\paw\work\tds\sherorj\md0929394\70D78-shr-RepairPlans.dgn



15
10
5
0
5
10
15

0 5 10 15 20 25 30 35 40 45 50 55 60 65 70 75 80 85 90

Span 1 - 91'-10"

Span 2 - 91'-10"

℄ C.H. 29

4

5

6

7

26'-6"

USER NAME	= Jeff.Sherer
DESIGNED	-
DRAWN	-
CHECKED	-
DATE	-
PLOT DATE	= 9/18/2024

DESIGNED	-
DRAWN	-
CHECKED	-
DATE	-

REVISED	-
REVISED	-
REVISED	-
REVISED	-

STATE OF ILLINOIS
DEPARTMENT OF TRANSPORTATION

DETAIL OF DECK SLAB REPAIR
S.N. 010-0208

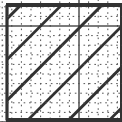
SCALE: SEE ABOVE SHEET 12 OF 13 SHEETS STA. TO STA.

F.A.I. RTE.	SECTION	COUNTY	TOTAL SHEETS	SHEET NO.
74	(10-4-1HB-1)BR	CHAMPAIGN	23	18
CONTRACT NO. 70D78				
ILLINOIS FED. AID PROJECT				



Span 2 - 91'-10"

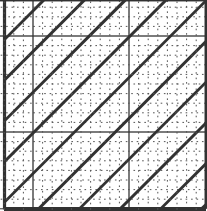
34'-6½"



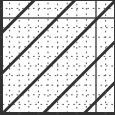
8



13



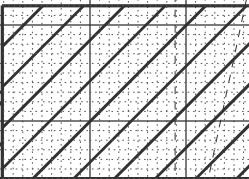
14



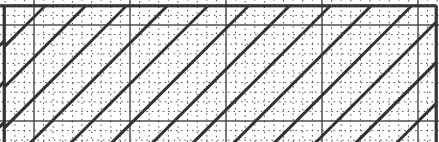
15



9



10



11



12

0 5 10 15 20 25 30 35 40 45 50 55

26'-6"

85 90

PATCH NO.	SIZE		DECK SLAB REPAIR (FULL DEPTH T1)	DECK SLAB REPAIR (FULL DEPTH T2)
	LENGTH (FT)	WIDTH (FT)	SQ YD	SQ YD
1	17	2		3.8
2	4	2		0.9
3	17	2		3.8
4	7	8		6.2
5	2	8		1.8
6	6	4		2.7
7	2	8		1.8
8	4	4		1.8
9	15.3	3		5.1
10	8.7	6		5.8
11	15	5		8.3
12	17	2		3.8
13	17	2		3.8
14	7	7		5.4
15	4	4		1.8
16				
17				

		TOTAL =		57.0
--	--	---------	--	------

MODEL: DECK SLAB REPAIR-2 (Sheet)
FILE NAME: c:\paw\work\tds\sherorj\md0923394\70D78-shr-RepairPlans.dgn

AREA OF DECK SLAB REPAIR HAVE BEEN ESTIMATED FROM A MARCH, 2024 DECK SURVEY. THE ACTUAL QUANTITY AND LOCATIONS SHALL BE DETERMINED BY THE ENGINEER. THE ENGINEER SHALL SHOW THE ACTUAL LOCATIONS OF THE DECK SLAB REPAIRS ON DECK PATCHING DETAIL SHEETS.

BILL OF MATERIALS

ITEM	UNIT	TOTAL
DECK SLAB REPAIR (FULL DEPTH) TYPE II	SQ. YD.	57.0

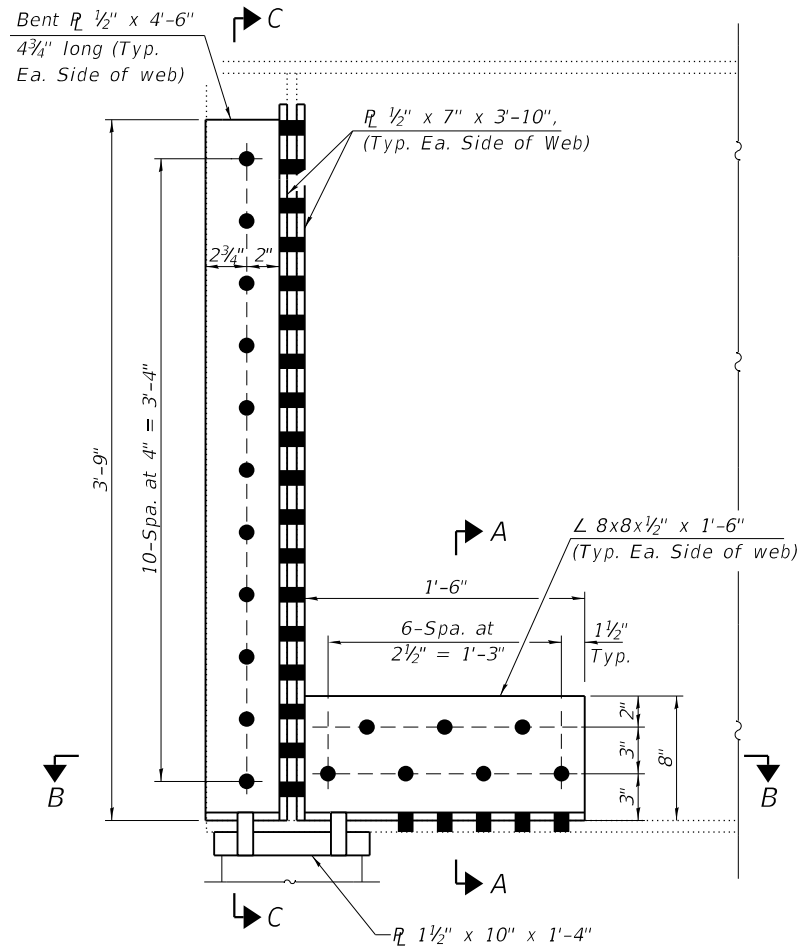
USER NAME = Jeff.Sherer	DESIGNED -	REVISED -
	DRAWN -	REVISED -
	CHECKED -	REVISED -
PLOT DATE = 9/18/2024	DATE -	REVISED -

STATE OF ILLINOIS
DEPARTMENT OF TRANSPORTATION

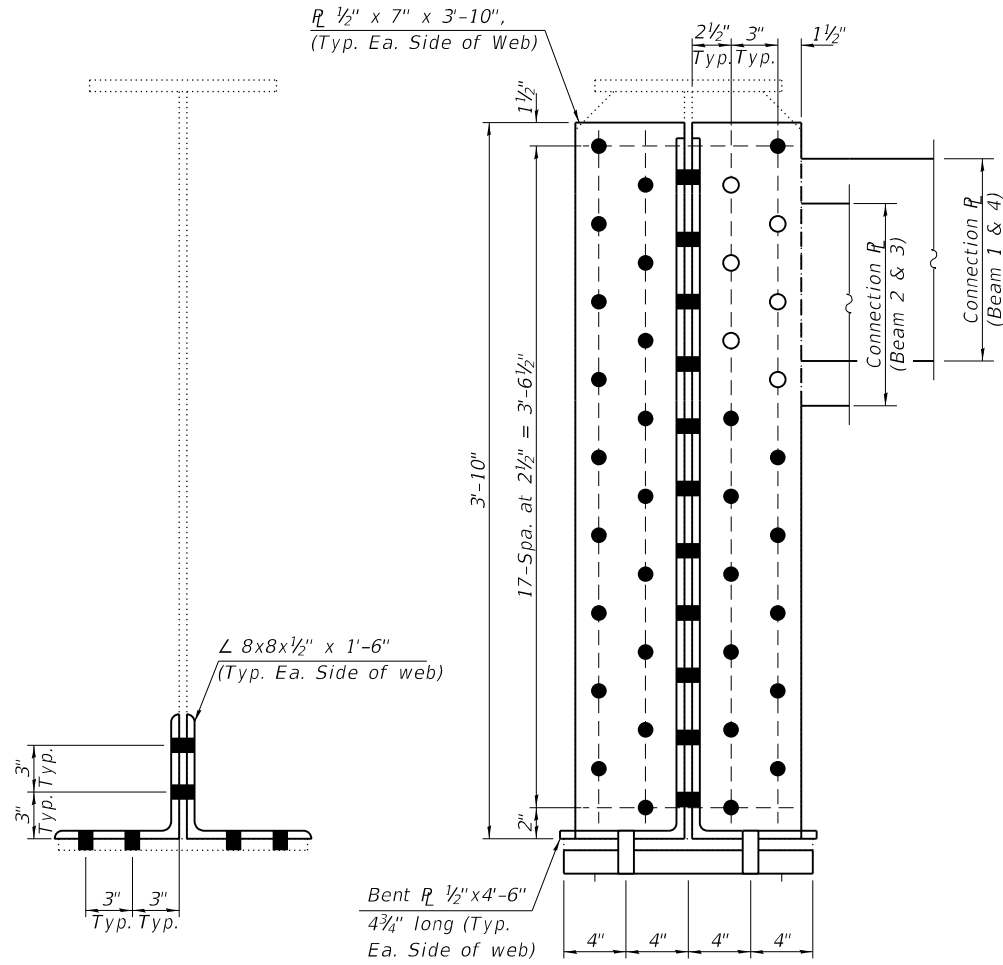
DETAIL OF DECK SLAB REPAIR
S.N. 010-0208

SCALE: SEE ABOVE SHEET 13 OF 13 SHEETS STA. TO STA.

FAI RTE.	SECTION	COUNTY	TOTAL SHEETS	SHEET NO.
74	(10-4-1HB-1)BR	CHAMPAIGN	23	19
CONTRACT NO. 70D78				
ILLINOIS FED. AID PROJECT				

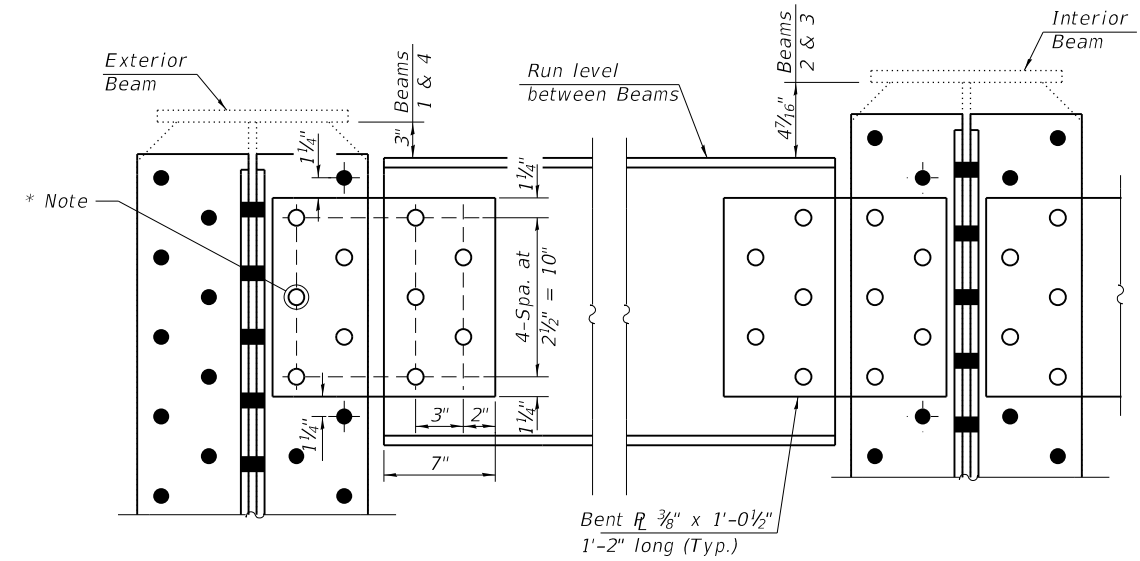
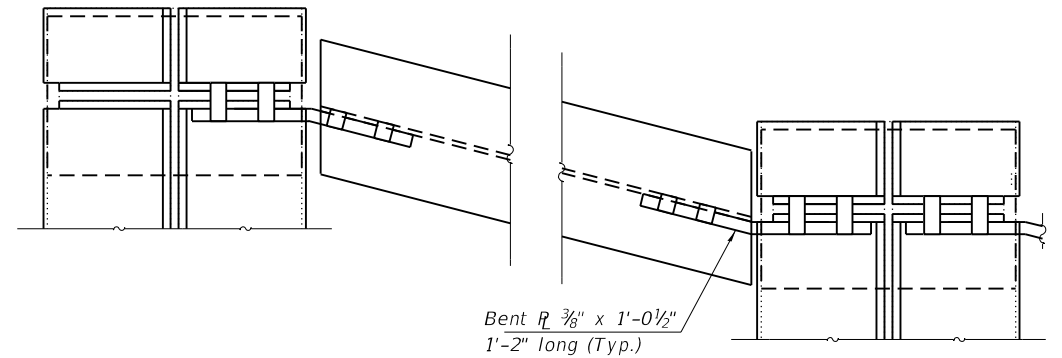


REPAIR "A"
 (8 Locations)



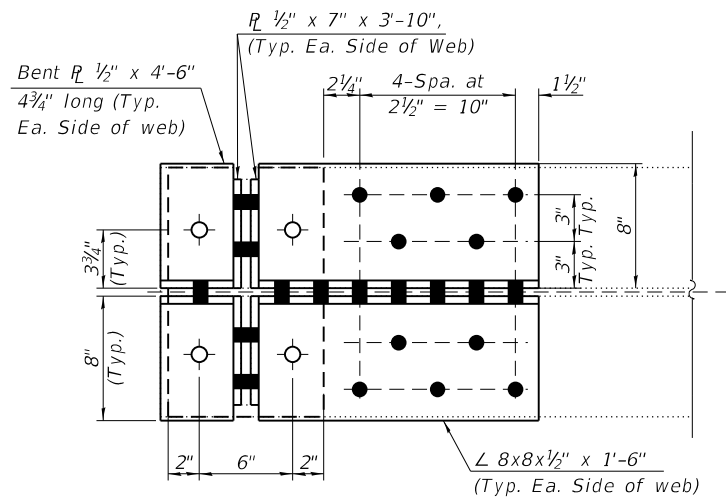
SECTION A-A

SECTION C-C

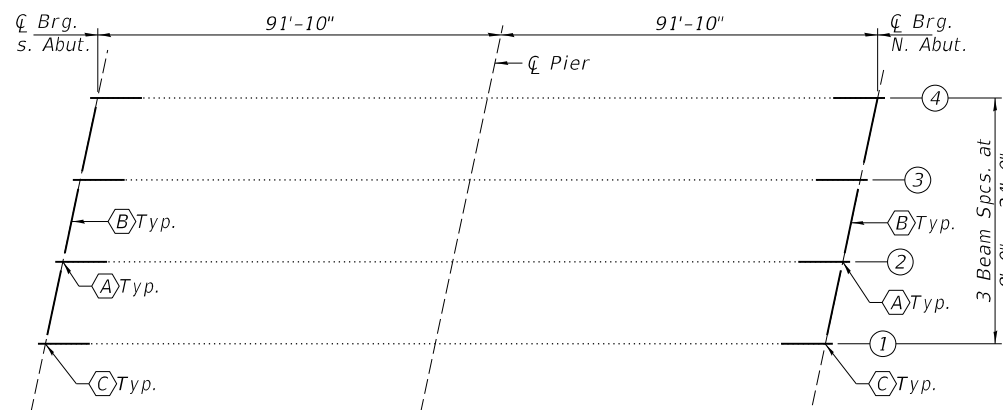


DIAPHRAGM REPLACEMENT DETAIL
 (6 Required)

* Note:
 It is required that at least 5 holes be drilled on the stiffener side of the bent plate. This is essential to ensure proper alignment and structural integrity. Contractor has the flexibility to adjust the position of the bent plate (up or down) as needed to meet this requirement, ensuring that the drilling can be completed effectively and accurately.
 All holes in the connection plate to be shop drilled and used as a template to drill holes into new steel on stiffener and the new diaphragm.



SECTION B-B



FRAMING PLAN

- ⓐ - Beam End Repairs
- ⓑ - Replacement of End Diaphragms
- ⓒ - Replace Existing Rocker bearings with Elastomeric Bearings.

BOLT HOLE LEGEND

- - Field drill using holes in new steel as a template, unless otherwise noted.
- - Shop Drill Holes.



CONNECTION PLATE DETAILS
 ($R \frac{3}{8}" \times 1'-0\frac{1}{2}" \times 1'-2"$ - 12 Required)

BILL OF MATERIAL

Item	Unit	Total
Furnishing and Erecting Structural Steel	Pound	2330
Structural Steel Removal	Pound	2330
Structural Steel Repair	Pound	3130

DESIGNED - ATH	EXAMINED	DATE - DECEMBER 6, 2023
CHECKED - JSB	ENGINEER OF STRUCTURAL SERVICES	
DRAWN - Venkat Ramana Reddy	PASSED	REVISD -
CHECKED - ATH JSB	ENGINEER OF BRIDGES AND STRUCTURES	REVISD -

STATE OF ILLINOIS
DEPARTMENT OF TRANSPORTATION

BEAM - END REPAIR DETAILS
SN 010-0208

SHEET NO. 1 OF 2 SHEETS

F.A.I. RTE.	SECTION	COUNTY	TOTAL SHEETS	SHEET NO.
74	(10-4-1HB-1)BR	CHAMPAIGN	23	20
CONTRACT NO. 70D78				
ILLINOIS FED. AID PROJECT				

ELEVATION AT ABUTMENT

SECTION A-A

BEAM REACTIONS

$R_{\mathcal{P}}$	(K)	45.8
$R_{\mathcal{L}}$	(K)	34.7
$Imp.$	(K)	8.0
R (Total)	(K)	88.5

Notes:

Diaphragm removal and reinstallation may be required to facilitate drilling holes. Cost included with Furnishing and Erecting Structural Steel.

New steel extensions, shim plates and connection bolts are included with Furnishing and Erecting Structural Steel.

Prior to ordering any material, the Contractor shall verify in the field all bearing height and shim thickness dimensions. Adjustment must account for deck heave due to pack rust (if present).

Min. jack capacity = 51 Tons.

Anchor bolts shall be ASTM F1554 all-thread (or an Engineer-approved alternate material) of the grade(s) and diameter(s) specified. ASTM A307 Grade C anchor bolts may be used in lieu of ASTM F1554 Grade 36 (Fy=36ksi). The corresponding specified grade of AASHTO M314 anchor bolts may be used in lieu of ASTM F1554.

Drilled and set anchor bolts shall be installed according to Article 521.06 of the Standard Specifications.

Cost of Side retainers and Stainless Steel plates shall be included in the cost of Elastomeric Bearing Assembly, Type I.

BEARING ASSEMBLY

Note:

Shim plates shall not be placed under Bearing Assembly.

SIDE RETAINER

*Equivalent rolled angle with stiffeners
will be allowed in lieu of welded plates.*

PLAN TOP AND BOTTOM PLATE

SECTION B-B

STEEL EXTENSION DETAIL

EXISTING BEARING REMOVAL DETAIL
Cost included with Jack and Remove Existing Bearings.

BILL OF MATERIAL

Item	Unit	Total
Elastomeric Bearing Assembly, Type I	Each	8
Jack and Remove Existing Bearings	Each	8
Furnishing and Erecting Structural Steel	Pound	1490
Anchor Bolts. 1"Ø	Each	16

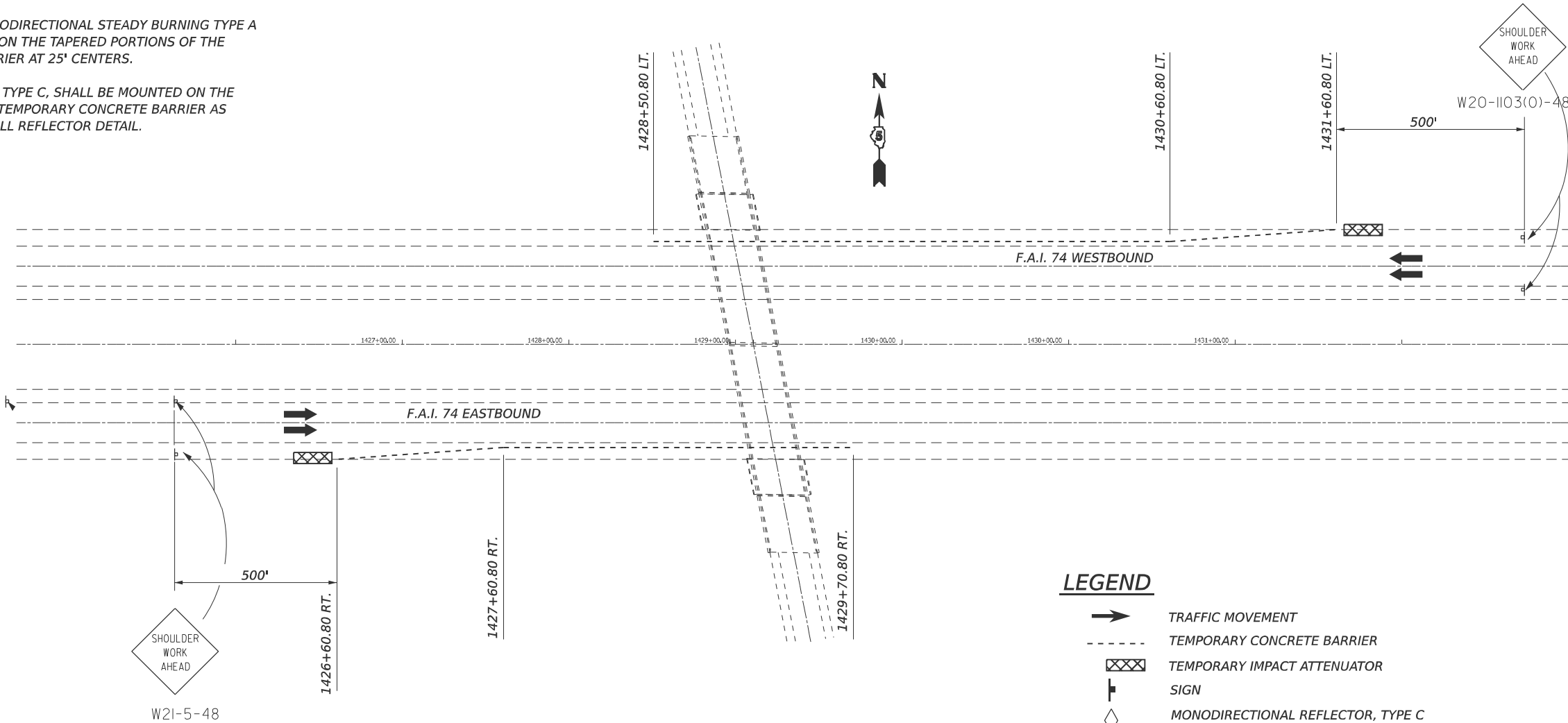
PLAN NOTES:

UTILIZE TRAFFIC CONTROL STANDARD 701406 FOR PLACEMENT OF TEMPORARY CONCRETE BARRIER. (FLAGGER REQUIRED UNTIL BARRIER PLACEMENT COMPLETED.)

TAPERED PORTION OF THE TEMPORARY CONCRETE BARRIER SHALL BE PLACED USING A 12:1 TAPER RATE AS SHOWN ON THE PLANS.

VERTICAL PANELS WITH MONODIRECTIONAL STEADY BURNING TYPE A LIGHTS SHALL BE MOUNTED ON THE TAPERED PORTIONS OF THE TEMPORARY CONCRETE BARRIER AT 25' CENTERS.

BARRIER WALL REFLECTORS, TYPE C, SHALL BE MOUNTED ON THE TANGENT PORTIONS OF THE TEMPORARY CONCRETE BARRIER AS SHOWN ON THE BARRIER WALL REFLECTOR DETAIL.



LEGEND

- TRAFFIC MOVEMENT
- - - - - TEMPORARY CONCRETE BARRIER
- XXXX TEMPORARY IMPACT ATTENUATOR
- SIGN
- ◇ MONODIRECTIONAL REFLECTOR, TYPE C
- MONODIRECTIONAL BURNING LIGHTS AND VERTICAL PANELS

70400100 TEMPORARY CONCRETE BARRIER

	STATION	TO	STATION	LENGTH
WESTBOUD				
LT	1428+50.80	LT	1430+60.80	210.0
TAPER LT	1430+60.80	LT	1431+60.80	100.0
EASTBOUND				
TAPER RT	1426+60.80	RT	1427+60.80	100.0
RT	1427+60.80	RT	1429+70.80	210.0
TOTAL =				620.0

TYPE C MONODIRECTIONAL REFLECTOR (TYP.)
REFLECTORS ON RIGHT SHALL BE CRYSTAL
REFLECTORS ON LEFT SHALL BE AMBER

TEMPORARY CONCRETE
BARRIER



BARRIER WALL MARKERS

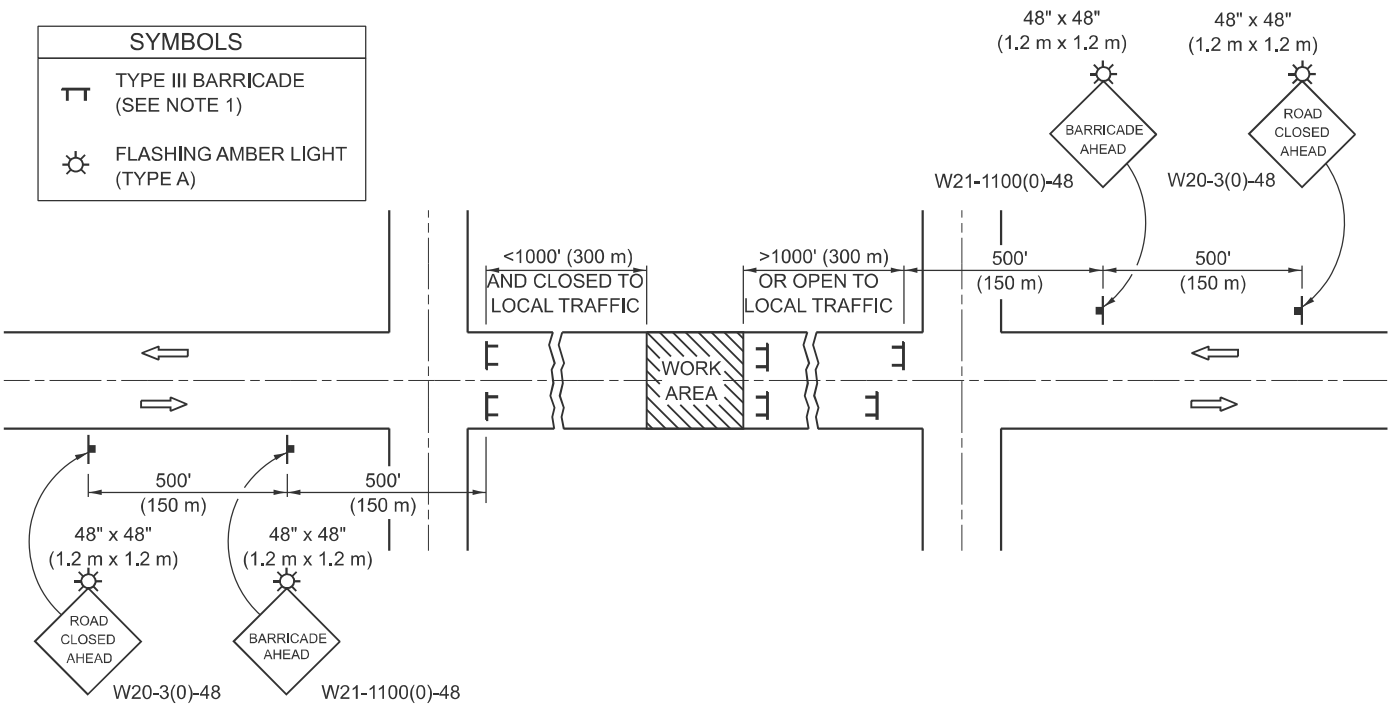
MODEL: TCPSpecial [Sheet]
FILE NAME: c:\pawork\wkd\shierojm\0929394\70D78-sh1-TC&SP1.dgn

	USER NAME = Jeff.Shierer		DESIGNED -	REVISED -	STATE OF ILLINOIS DEPARTMENT OF TRANSPORTATION	DETAIL OF TRAFFIC CONTROL & PROTECTION (SPECIAL)				F.A.I. RTE.	SECTION	COUNTY	TOTAL SHEETS	SHEET NO.
			DRAWN -	REVISED -		S.N. 010-0208				74	(10-4-1HB-1)BR	CHAMPAIGN	23	22
			CHECKED -	REVISED -						CONTRACT NO. 70D78				
	PLOT DATE = 8/28/2024		DATE -	REVISED -		SCALE: NONE	SHEET 1	OF 1	SHEETS	STA.	TO STA.	ILLINOIS FED. AID PROJECT		

ROAD CLOSURE


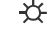



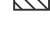
SIDEROAD / STREET CLOSURE

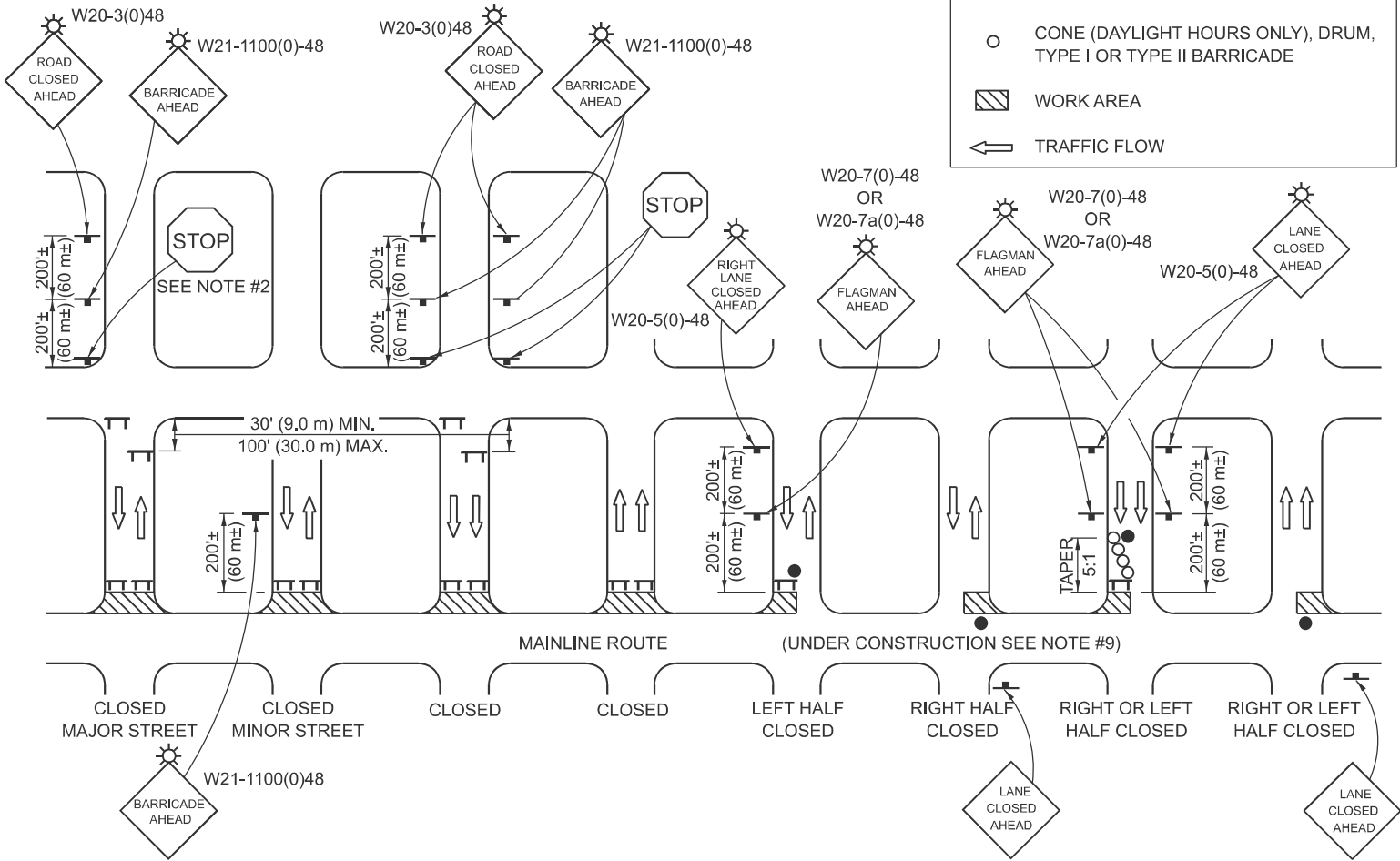
SYMBOLS	
	TYPE III BARRICADE (SEE NOTE 1)
	FLASHING AMBER LIGHT (TYPE A)



GENERAL NOTES

- TYPE III BARRICADES SHALL BE AS SHOWN ON STANDARD 701901 "TYPICAL APPLICATIONS OF TYPE III BARRICADES CLOSING A ROAD". EACH TYPE III BARRICADE SHALL HAVE TWO FLASHING AMBER LIGHTS MOUNTED ABOVE IT.
- IF THE ROAD IS OPEN TO LOCAL TRAFFIC OR EXCEEDS 1000' (300 m), ANOTHER SET OF TYPE III BARRICADES, EQUIPPED AS IN NOTE 1 ABOVE, SHALL BE PLACED AT EACH END OF THE WORK AREA.
- WHEN A STOP CONDITION EXISTS, NO SIGNS ARE REQUIRED IN ADVANCE OF THE "STOP" SIGN WHEN THE ROAD IS CLOSED WITHIN 100' (30 m) OF THE INTERSECTION.
- STANDARD 701901 SHALL APPLY FOR THE PLACEMENT & DESIGN OF TYPE III BARRICADES.
- IF A TYPE III BARRICADE WITH AN ATTACHED SIGN PANEL WHICH MEETS NCHRP 350 IS NOT AVAILABLE, THE SIGNS MAY BE MOUNTED ON AN NCHRP 350 TEMPORARY SIGN SUPPORT DIRECTLY IN FRONT OF THE BARRICADE.
- REFLECTORIZED STRIPING SHALL APPEAR ON BOTH SIDES OF THE TY III BARRICADES IF ROAD IS OPEN TO LOCAL TRAFFIC.
- ALL SIGNS SHALL BE POST MOUNTED IF THE CLOSURE TIME EXCEEDS FOUR DAYS.
- A MINIMUM OF TWO FLASHING LIGHTS SHALL BE USED AT NIGHT ON EACH APPROACH IN ADVANCE OF THE WORK AREA. FLASHING LIGHTS SHALL BE INSTALLED ABOVE THE FIRST TWO SIGNS IN THE SERIES.
- LONGITUDINAL DIMENSIONS MAY BE ADJUSTED SLIGHTLY TO FIT FIELD CONDITIONS.
- FORMS BT. 725 AND BT. 726 ARE REQUIRED.
- WHEN A SIDEROAD INTERSECTS THE HIGHWAY ON WHICH WORK IS BEING PERFORMED, ADDITIONAL TRAFFIC DEVICES SHALL BE ERECTED AND PROVIDED AS DIRECTED BY THE ENGINEER.
- AN ADDITIONAL SIGN MAY BE REQUIRED AT A MAJOR INTERSECTING ROAD IN ADVANCE OF THE CLOSURE. THE ADDITIONAL SIGN SHALL GIVE THE DISTANCE TO THE BARRICADE IN MILES OR FRACTIONS OF A MILE.

SYMBOLS	
	TYPE III BARRICADE (SEE NOTE)
	FLASHING LIGHT
	FLAGGER WITH TRAFFIC CONTROL SIGN (WHILE WORK IS BEING PERFORMED)
	CONE (DAYLIGHT HOURS ONLY), DRUM, TYPE I OR TYPE II BARRICADE
	WORK AREA
	TRAFFIC FLOW



GENERAL NOTES

- TYPE III BARRICADES SHALL BE AS SHOWN ON "TYPICAL APPLICATIONS OF TYPE III BARRICADES CLOSING A ROAD". EACH TYPE III BARRICADE SHALL HAVE TWO FLASHING AMBER LIGHTS MOUNTED ABOVE IT.
- WHERE A STOP CONDITION EXISTS, AS SHOWN ABOVE, WARNING SIGNS MAY BE OMITTED IN ADVANCE OF THE "STOP" SIGN.
- STANDARD 701901 SHALL APPLY FOR THE PLACEMENT & MANUFACTURE OF TYPE III BARRICADES.
- ALL SIGNS SHALL BE POST MOUNTED IF THE CLOSURE TIME EXCEEDS FOUR DAYS.
- ONE FLASHING LIGHT IS REQUIRED ABOVE EACH ADVANCE WARNING SIGN DURING HOURS OF DARKNESS.
- LONGITUDINAL DIMENSIONS MAY BE ADJUSTED SLIGHTLY TO FIT FIELD CONDITIONS.
- FORMS BT 725 AND BT 726 ARE REQUIRED.
- THE MAINLINE ROUTE TEMPORARY TRAFFIC CONTROL SHALL BE IN ACCORDANCE WITH THE PLANS, SPECIAL PROVISIONS AND STANDARD SPECIFICATIONS.
- ALL FLAGGERS REQUIRED AT SIDE ROADS AND ENTRANCES REMAINING OPEN TO TRAFFIC AND/OR ADDITIONAL BARRICADES REQUIRED BY THE ENGINEER TO CLOSE SIDE ROADS AND ENTRANCES WILL BE PAID FOR ACCORDING TO ARTICLE 109.04.

Note: All dimensions are in INCHES (millimeters) unless otherwise shown.

DISTRICT 5 DETAIL NO. 70200000

F.A.I. RTE.	SECTION	COUNTY	TOTAL SHEETS	SHEET NO.
74	(10-4-1HB-1)BR	CHAMPAIGN	23	23
CONTRACT NO. 70D78				

STATE OF ILLINOIS
DEPARTMENT OF TRANSPORTATION

TRAFFIC CONTROL & PROTECTION DEVICES
(ROAD & SIDEROAD / STREET CLOSURES)

SCALE: NONE SHEET 1 OF 1 SHEETS STA. TO STA.

USER NAME = Jeff.Sherer	DESIGNED -	REVISED - 11/06
	DRAWN -	REVISED - 12/07
PLOT SCALE = \$SCALE\$	CHECKED -	REVISED - 09/09 KJT
PLOT DATE = 6/24/2024	DATE -	REVISED -