

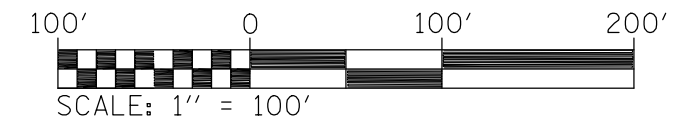
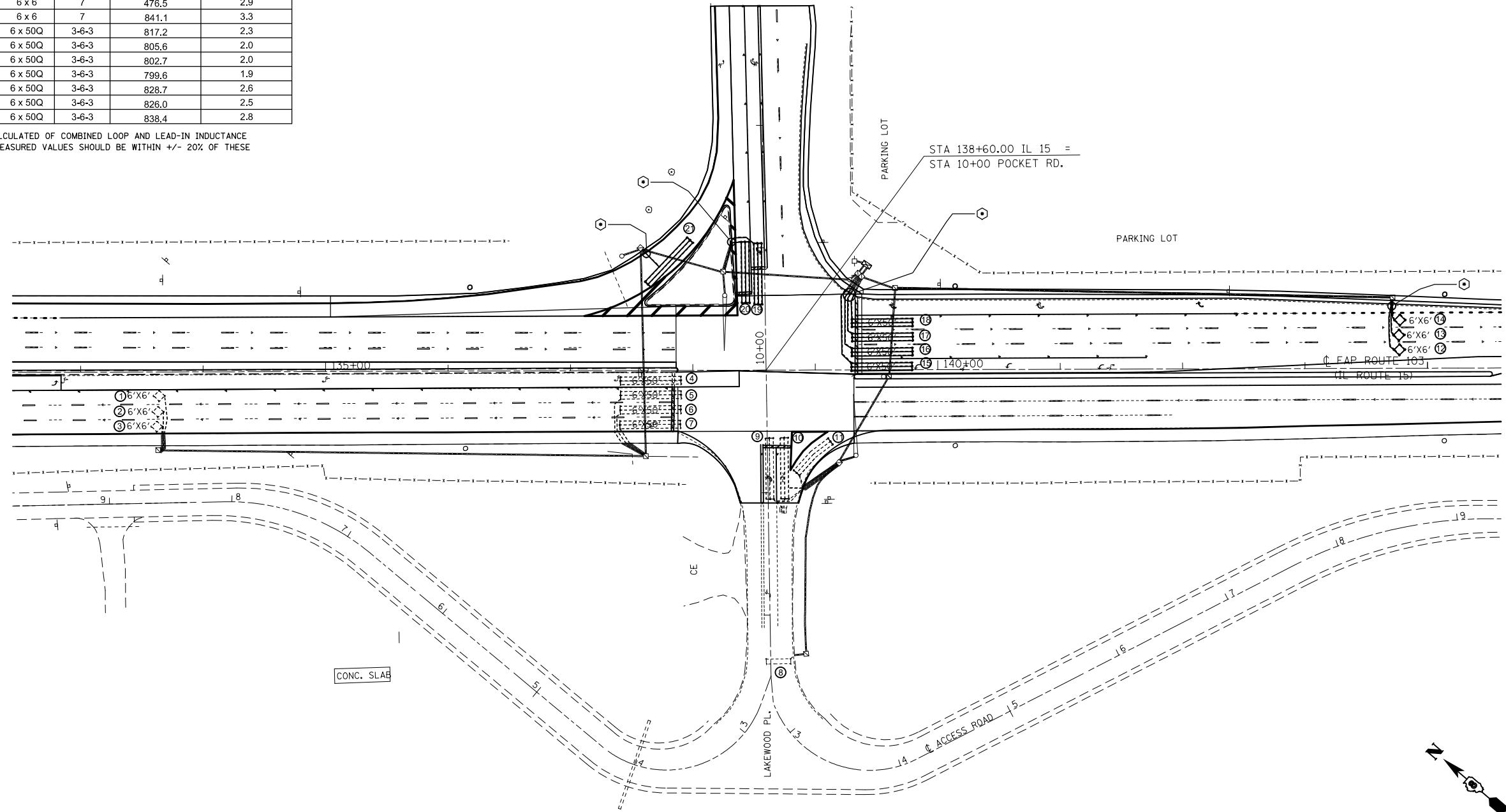
DETECTOR LOOP REQUIREMENTS AND CALCULATIONS
FOR IL 015 AND POCKET RD.

LOOP#	PHASE #	LOOP SIZE (FT. X FT.)	REQUIRED # OF TURNS	CALCULATED INDUCTANCE MICROHENRIES (μH)	CALCULATED RESISTANCE OHMS (Ω)
1. EB CCO 1	5	6 x 6	7	540.9	4.4
2. EB CCO 2	5	6 x 6	7	538.1	4.3
3. EB CCO 3	5	6 x 6	7	535.4	4.3
4. EB LT CD	2	6 x 50Q	3-6-3	846.7	3.0
5. EB THRU CD A	5	6 x 50Q	3-6-3	873.6	3.6
6. EB THRU CD B	5	6 x 50Q	3-6-3	870.7	3.5
7. EB THRU CD C	5	6 x 50Q	3-6-3	867.8	3.5
8. NB CCO	8	4 x 20	7	827.8	3.0
9. NB LT CD	8	6 x 50Q	3-6-3	856.0	3.2
10. NB THRU CD	8	6 x 50Q	3-6-3	856.0	3.2
11. NB RT CD	8	6 x 50Q	3-6-3	844.3	2.9
12. WB CCO A	6	6 x 6	7	479.1	3.0
13. WB CCO B	6	6 x 6	7	476.5	2.9
14. WB CCO C	7	6 x 6	7	841.1	3.3
15. WB LT CD	1	6 x 50Q	3-6-3	817.2	2.3
16. WB THRU CD A	6	6 x 50Q	3-6-3	805.6	2.0
17. WB THRU CD B	6	6 x 50Q	3-6-3	802.7	2.0
18. WB THRU CD C	6	6 x 50Q	3-6-3	799.6	1.9
19. SB LT CD	4	6 x 50Q	3-6-3	828.7	2.6
20. SB THRU CD	4	6 x 50Q	3-6-3	826.0	2.5
21. SB RT CD	4	6 x 50Q	3-6-3	838.4	2.8

THE ABOVE VALUES ARE CALCULATED OF COMBINED LOOP AND LEAD-IN INDUCTANCE AND RESISTANCE. ACTUAL MEASURED VALUES SHOULD BE WITHIN +/- 20% OF THESE VALUES.

Q=QUADRAPOLE

⊕=SEE DETAIL A



FILE NAME =	USER NAME = conoverpj	DESIGNED -	REVISED -
et:\pw\work\p\dtd\conoverpj\d0340760\d076g38-shr-Tspln.dgn		DRAWN -	REVISED -
	PLOT SCALE = 100.0000' / in.	CHECKED -	REVISED -
	PLOT DATE = 10/18/2013	DATE -	REVISED -

STATE OF ILLINOIS
DEPARTMENT OF TRANSPORTATION

DETECTOR LOOP REPLACEMENT PLAN
IL 015 AND POCKET RD.

SCALE: SHEET NO. OF SHEETS STA. TO STA.

F.A.P. RTE.	SECTION	COUNTY	TOTAL SHEETS	SHEET NO.
103	(29-1,28-1,28-2,26-1)RS-2	ST. CLAIR	97	86
CONTRACT NO. 76G38				
FED. ROAD DIST. NO. ILLINOIS FED. AID PROJECT				