

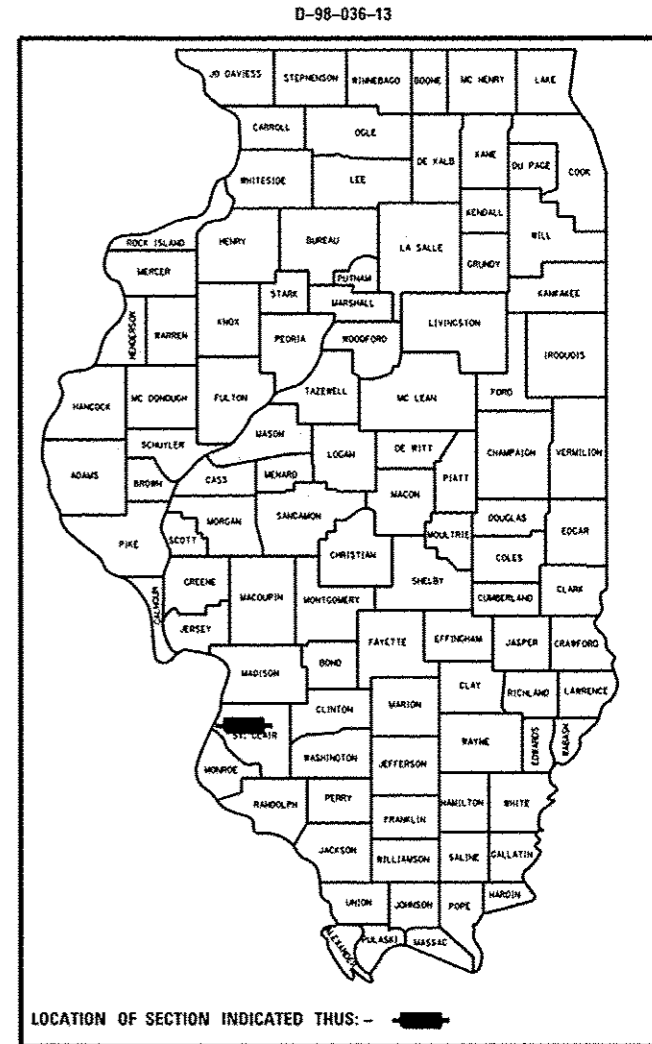
STATE OF ILLINOIS
DEPARTMENT OF TRANSPORTATION
DIVISION OF HIGHWAYS

**PROPOSED
HIGHWAY PLANS**

FAP ROUTE 103 (IL 15)
SECTION (29-1,28-1,28-2,26-1)RS-1
PROJECT ALNHPP-0103(076)
RESURFACING - 3P - EB LANES ONLY
ST. CLAIR

F.A.P. RTE.	SECTION	COUNTY	TOTAL SHEETS	SHEET NO.
103	(29-1,28-1,28-2,26-1)RS-1	ST. CLAIR	96	1
		ILLINOIS	CONTRACT NO. 76G37	

FOR INDEX OF SHEETS, SEE SHEET NO. 2

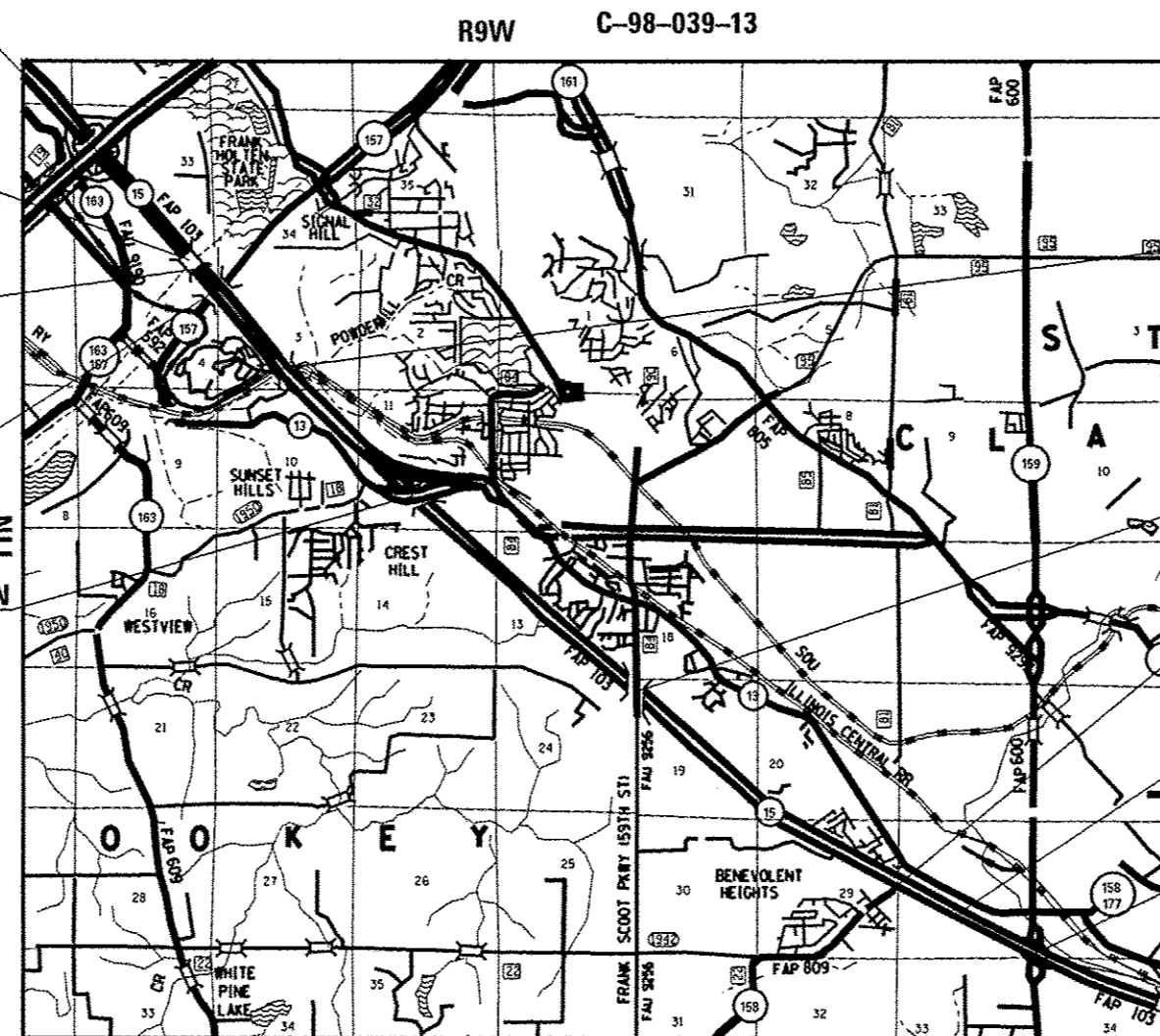


BEGIN PROJECT
STA. 124 + 14
LAT: 38.588255
LONG: -90.114219

BRIDGE OMISSION
STA. 159 + 09.05 - 161 + 14.45

STATION EQUATION:
STA. 161 + 51.78 BK =
STA. 224 + 00.00 AH

BRIDGE OMISSION
STA. 232 + 99.31 - 235 + 30.26



BRIDGE OMISSION
STA. 271 + 16.37 -
275 + 32.24

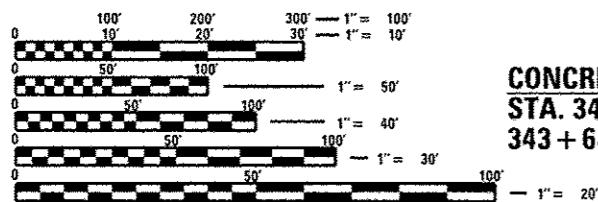
CONCRETE OMISSION
STA. 453 + 79.92 -
455 + 61.02

BRIDGE OMISSION
STA. 578 + 09.23 -
580 + 54.66

BRIDGE OMISSION
STA. 600 + 42.10 -
602 + 71.33

BRIDGE OMISSION
STA. 631 + 89.72 -
637 + 20.08

END PROJECT
STA. 651 + 50
LAT: 38.495516
LONG: -89.976636



FULL SIZE PLANS HAVE BEEN PREPARED USING STANDARD ENGINEERING SCALES. REDUCED SIZED PLANS WILL NOT CONFORM TO STANDARD SCALES. IN MAKING MEASUREMENTS ON REDUCED PLANS, THE ABOVE SCALES MAY BE USED.

J.U.L.I.E.
JOINT UTILITY LOCATION INFORMATION FOR EXCAVATION
1-800-892-0123
OR 811

PROJECT ENGINEER: TIM PADGETT 618-346-3325
PROJECT MANAGER: PHILIP COPPERNOLL 618-346-3208

CONTRACT NO. 76G37

GROSS LENGTH = 46,487.78 FT. = 8.805 MILE
NET LENGTH = 44,252.15 FT. = 8.381 MILE

NOT TO SCALE

STATE OF ILLINOIS
DEPARTMENT OF TRANSPORTATION
DIVISION OF HIGHWAYS

SUBMITTED Oct 19, 2013
Jeffrey Z. K...
DEPUTY DIRECTOR OF HIGHWAYS, REGION 5 ENGINEER

Dec 6, 2013
John D. Baranzeo, PE
ENGINEER OF DESIGN AND ENVIRONMENT

Dec 6, 2013
Omer Osman, PE
DIRECTOR OF HIGHWAYS, CHIEF ENGINEER

**PRINTED BY THE AUTHORITY
OF THE STATE OF ILLINOIS**