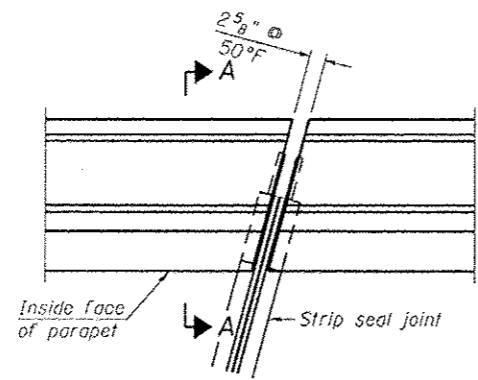
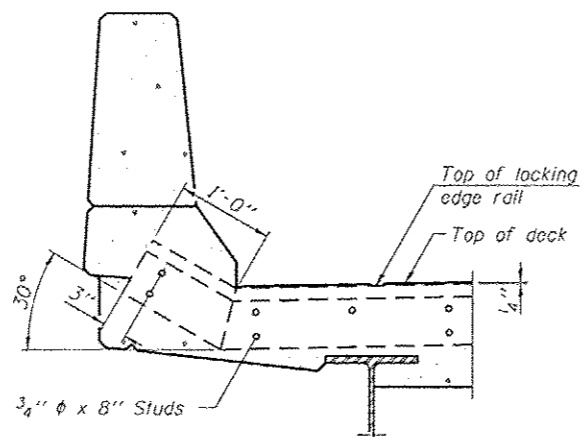


4:01:07 PM - G:\S1\2\000\Bridges\CAD\Drawings\Sheet\Bridges_0243\0600243-76F10-08-Expansion_Joint_Details.dgn

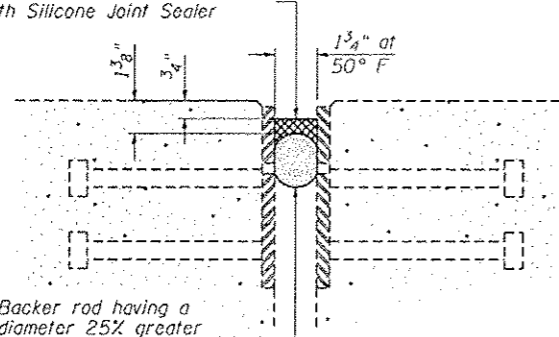


PLAN
(For skews $\leq 30^\circ$)



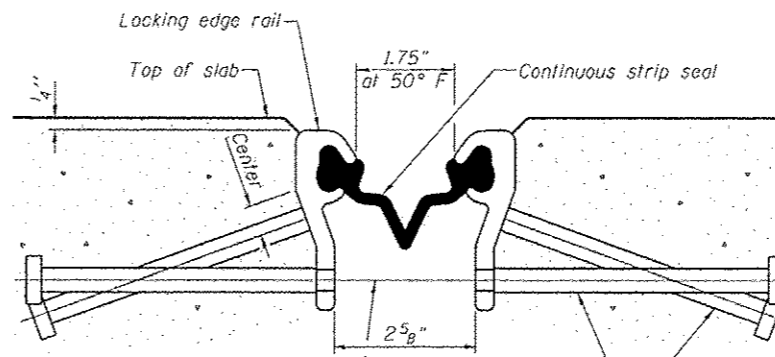
SECTION A-A

Preformed Joint Seal to be removed and replaced with Silicone Joint Sealer



SILICONE JOINT SEALER DETAIL
(S. Abutment)

*Omit weld at seal opening.
**When joint is fixed, dimension is set at 1 1/2".

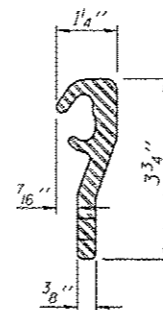


7/16" ϕ holes at 4'-0" cts. for 3/8" ϕ bolts. All bolts shall be burned, sawed, or chipped off flush with the plates after forms are removed, typ.

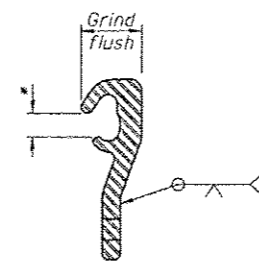
Place 1/2" ϕ x 6" granular or solid flux filled headed studs conforming to Article 1006.32 of the Std. Specs., automatically end welded at 1'-0" alt. cts.

SECTION THRU STRIP SEAL JOINT

(N. Abutment)



LOCKING EDGE RAIL



LOCKING EDGE RAIL SPLICE

Notes:

The strip seal shall be made continuous and shall have a minimum thickness of 1/4". The configuration of the strip seal shall match the configuration of the Locking Edge Rails.

The height and thickness of the Locking Edge Rails shown are minimum dimensions. The actual configuration of the Locking Edge Rails and matching strip seal may vary from manufacturer to manufacturer. Flanged edge rails will not be allowed.

The inside of the Locking Edge Rail groove shall be free of weld residue.

Locking Edge Rails may be spliced at slope discontinuities and stage construction joints.

The manufacturer's recommended installation methods shall be followed.

All steel components shall be galvanized after fabrication according to Article 520.03 of the Standard Specifications.

BILL OF MATERIAL

Item	Unit	Total
Preformed Joint Strip Seal	Foot	40
Silicon Joint Sealer, 1.75"	Foot	40

FILE NAME - 0688243-76F10-08-Expansion_Joint_Details.dgn



USER NAME = gahawley	X	DESIGNED - SDG	REVISED -
	X	CHECKED - FAS	REVISED -
PLOT SCALE = 0:2.0000 1" = 1'-0"	X	DRAWN - DMG	REVISED -
PLOT DATE = 3/25/2013	X	CHECKED - SDG	REVISED -

**STATE OF ILLINOIS
DEPARTMENT OF TRANSPORTATION**

**EXPANSION JOINT DETAILS
STRUCTURE NO. 060-0243 SB**

SHEET NO. 8 OF 10 SHEETS

F.A.I. RTE. 255	SECTION 60-(8,9) RS-1	COUNTY MADISON	TOTAL SHEETS 206	SHEET NO. 204
ILLINOIS FED. AID PROJECT			CONTRACT NO. 76F10	