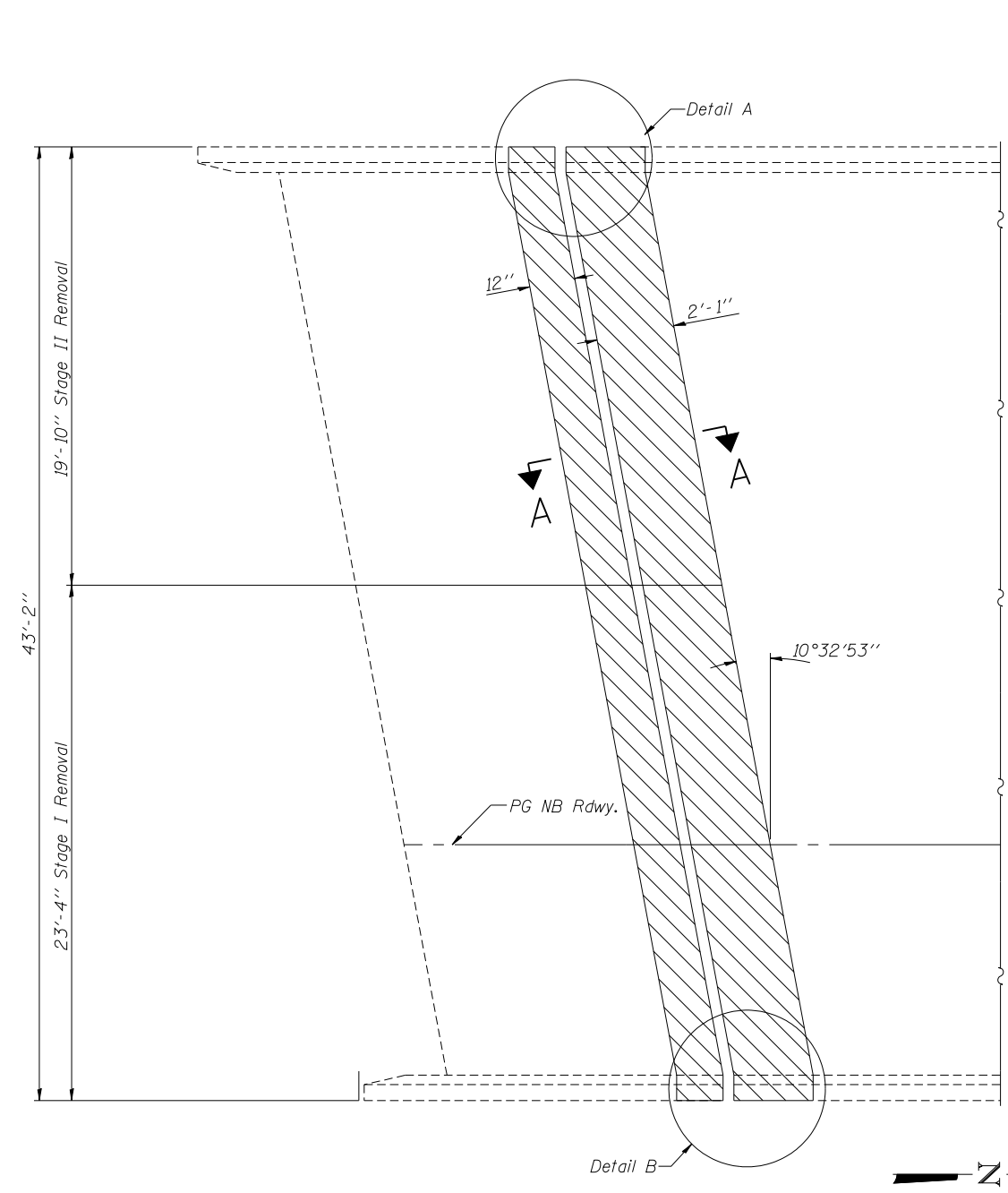
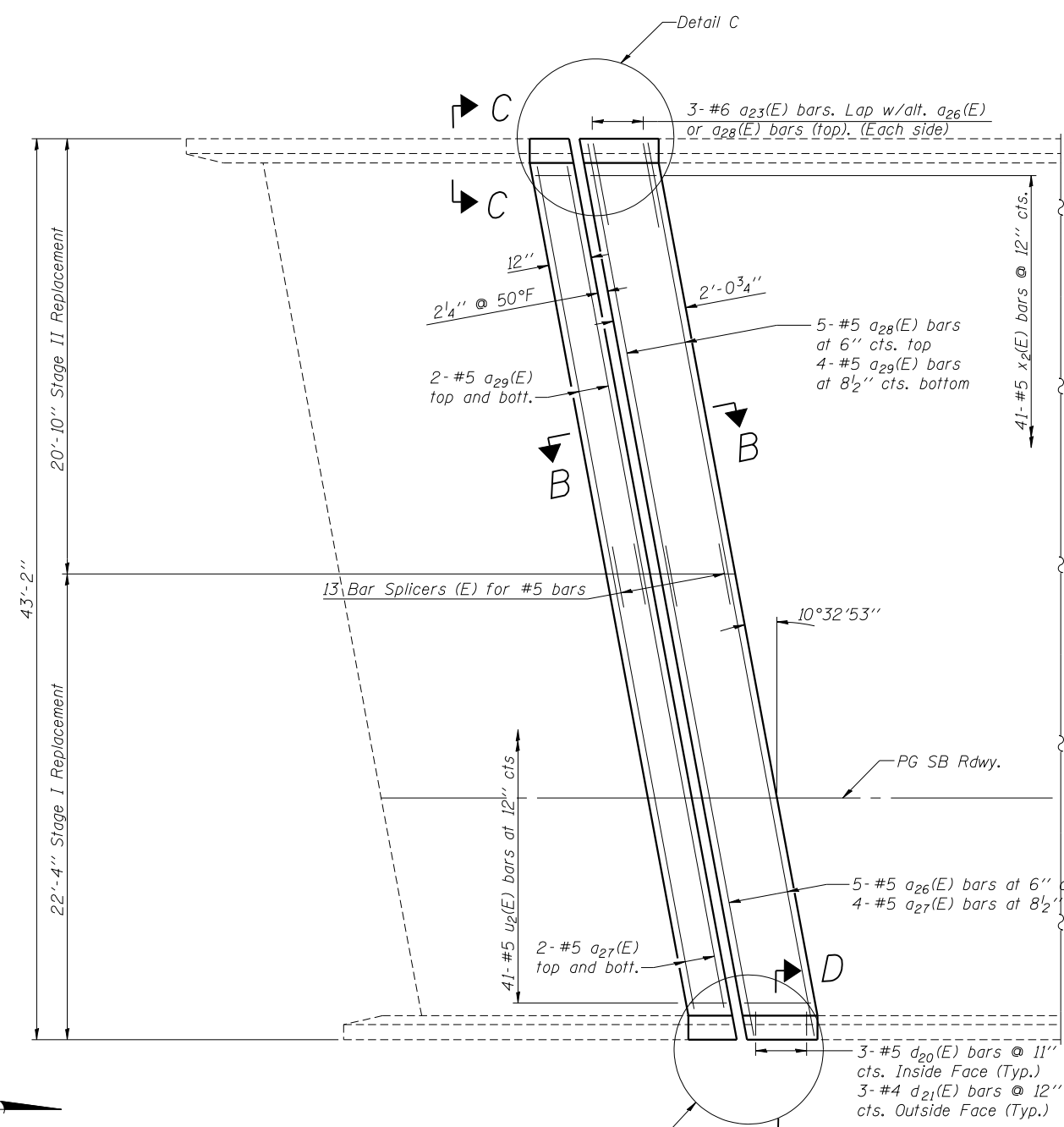


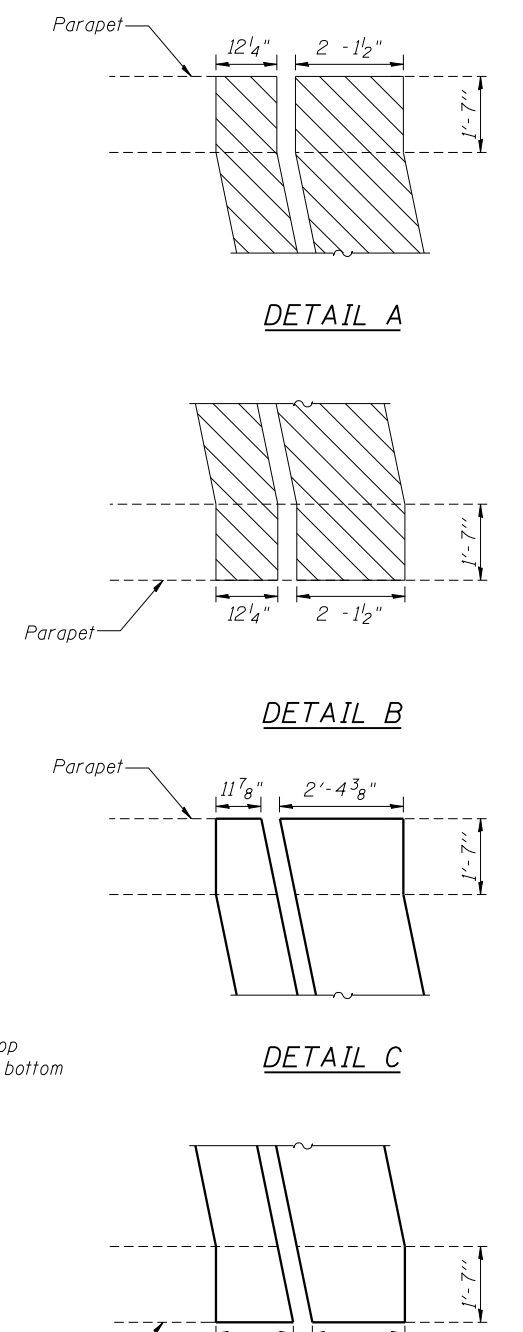
5/22/2013 5:22:03 AM - g:\S\12\0001\Bridges\CAD\Drawings\Bridges\_0224\0600224-76F10-07-South\_Exp\_Jt.dgn



**CONCRETE REMOVAL**  
(NB South Abutment Expansion Joint shown)



**CONCRETE REPLACEMENT**  
(NB South Abutment Expansion Joint shown)



**DETAIL A**

**DETAIL B**

**DETAIL C**

**DETAIL D**

**LEGEND**



**NOTES:**

- Existing reinforcement extending into the removal area shall be cleaned, straightened and incorporated into the new construction. Any reinforcement bars that are damaged during concrete removal shall be replaced with an approved bar splicer or anchorage system. Cost shall be included with Concrete Removal.
- Trim existing reinforcement to accommodate proposed expansion joint.
- See sheet 8 for section A-A, B-B, C-C and D-D.

**MIN. LAP**  
#5 Bar 2'-7" Min. Lap.

**BILL OF MATERIAL**

Item	Unit	Total
Concrete Removal	Cu. Yd.	5.6
Concrete Superstructure	Cu. Yd.	5.6
* Protective Coat	Sq. Yd.	16.3

\*Applied to new concrete only.



USER NAME = sdnenn	DESIGNED - SDG	REVISED -
PLOT SCALE = #SCALE#	CHECKED - FAS	REVISED -
PLOT DATE = 5/22/2013	DRAWN - IK	REVISED -
	CHECKED - SDG	REVISED -

**STATE OF ILLINOIS  
DEPARTMENT OF TRANSPORTATION**

**SOUTH ABUTMENT EXPANSION JOINT CONCRETE  
REMOVAL AND REPLACEMENT  
STRUCTURE NO. 060-0224 N.B.**

F.A.I. RTE. = 255	SECTION = 60-(8,9) RS-1	COUNTY = MADISON	TOTAL SHEETS = 206	SHEET NO. = 190
				CONTRACT NO. 76F10
ILLINOIS FED. AID PROJECT				

SHEET NO. 7 OF 13 SHEETS