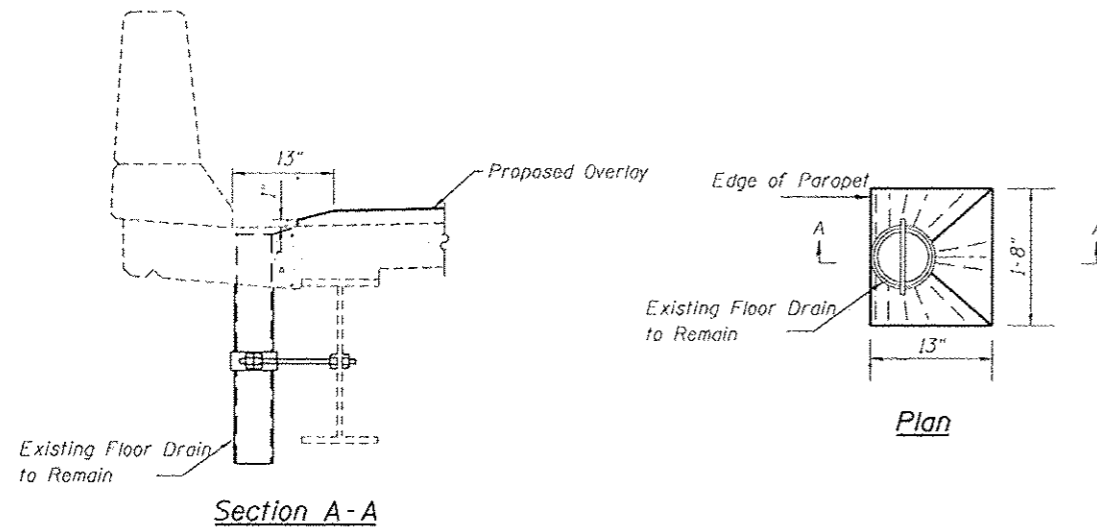


GENERAL NOTES

1. Prior to pouring the new concrete deck, all heavy or loose rust, loose mill scale, and other loose or potentially detrimental foreign material shall be removed from the surfaces in contact with concrete. Tightly adhered paint may remain unless otherwise noted. Removal shall be accomplished by methods that will not damage the steel and the cost will be included in the pay item covering removal of the existing concrete. As directed by the Engineer, existing construction accessories welded to the top flange of beams and girders shall be removed. The weld areas shall be ground flush and inspected for cracks using magnetic particle testing (MT) or dye penetrant testing (PT) by qualified personnel approved by the Engineer. Any cracks that cannot be removed by grinding 1/4 in. deep shall be identified and reported to the Bureau of Bridges and Structures for further disposition. The cost of removing welded accessories, grinding and inspecting weld areas and grinding cracks will be paid for according to Article 109.04 of the Standard Specifications.
2. Plan dimensions, elevation and details relative to existing plans are subject to nominal construction variations. The Contractor shall field verify existing dimensions and details affecting new construction and make necessary approved adjustments prior to construction or ordering of materials. Such variations shall not be cause for additional compensation for a change in scope of the work, however, the Contractor will be paid for the quantity actually furnished at the unit price bid for the work.
3. Joint opening shall be adjusted according to Art. 520.04 of the Standard Specifications when the deck is poured at an ambient temperature other than 50 deg F.
4. Reinforcement bars designated (E) shall be epoxy coated.
5. The new concrete deck surfaces shall have its final finish lined according to Article 420.09(e)(1).
6. The Contractor shall use extreme care during concrete removal so as not to damage the existing 2 1/2" precast, prestressed stay-in-place forms.
7. Areas of deck repairs shown are estimated. The Engineer shall show actual locations of the deck repairs on the as-built plans.
8. Existing pavement markings shall be temporarily covered prior to the application of the deck surface treatment, to prevent the material from being applied to the markings and to protect the reflective properties of the markings. The temporary covering material used shall be such that it will not affect the markings reflectivity when removed after application of the deck surface treatment and prior to opening traffic. Cost shall be included with Concrete Removal.



Proposed Overlay at Existing Floor Drains

TOTAL BILL OF MATERIAL

ITEM	UNIT	TOTAL
Stone Riprap, Class A3	Sq Yd	5
Filter Fabric	Sq Yd	5
** Polymerized Hot-Mix Asphalt Surface Course, Mix "E", N90	Ton	222
Concrete Removal	Cu Yd	19.3
Protective Coat	Sq Yd	51.5
Concrete Superstructure	Cu Yd	21.0
Reinforcement Bars, Epoxy Coated	Pound	3070
Bar Splicers	Each	33
Prefomed Joint Strip Seal	Foot	183
Waterproofing Membrane System	Sq Yd	1978
* Bridge Deck Concrete Sealer	Sq Ft	26036
Deck Slab Repair - (Partial Depth)	Sq Yd	22.4
Deck Slab Repair - (Full Depth, Type I)	Sq Yd	2
Silicone Joint Sealer, 1.75 "	Foot	73

INDEX OF SHEETS

1. General Plan and Elevation
2. General Data
3. Stage Construction North Bound
4. Stage Construction South Bound
5. Temp Concrete Barrier details for Stage Construction
6. North Expansion Jt Concrete Removal and Replacement North Bound
7. Deck Joint Details North Bound
8. Deck Patching Plan South Bound
9. North Expansion Jt Concrete Removal and Replacement South Bound
10. South Expansion Jt Concrete Removal and Replacement South Bound
11. Deck Joint Details South Bound
12. Expansion Joint Details
13. Bar Splicer Assembly Details
14. Slope repairs South Abutment South Bound

* For Structure No. 060-0222SB, concrete sealer to be applied to the top and inside vertical faces of the parapets.

** For Structure No. 060-0222SB, Minimum thickness of HMA surface course is 1 1/2". Maximum total thickness of HMA Surface Course plus Waterproofing Membrane System is 2".

9/12/2013 9:55:12 AM C:\BIB\p060\0222\0242\0600222242\0242-76F10-02-Cover.dwg

FILE NAME: *FILES*



USER NAME: sdg	DESIGNED: SDG	REVISED:
PLT1 SCALE: 1/8"=1'-0"	CHECKED: FAS	REVISED:
PLT2 DATE: 9/12/2013	DRAWN: DMG	REVISED:
	CHECKED: SDG	REVISED:

**STATE OF ILLINOIS
DEPARTMENT OF TRANSPORTATION**

**GENERAL DATA
STRUCTURE NO. 060-0222SB & 060-0242NB**

SHEET NO. 2 OF 14 SHEETS

F.A.I. RTE. 255	SECTION 60-(8,9) RS-1	COUNTY MADISON	TOTAL SHEETS 206	SHEET NO. 171
			CONTRACT NO. 76F10	
ILLINOIS FED. AID PROJECT				