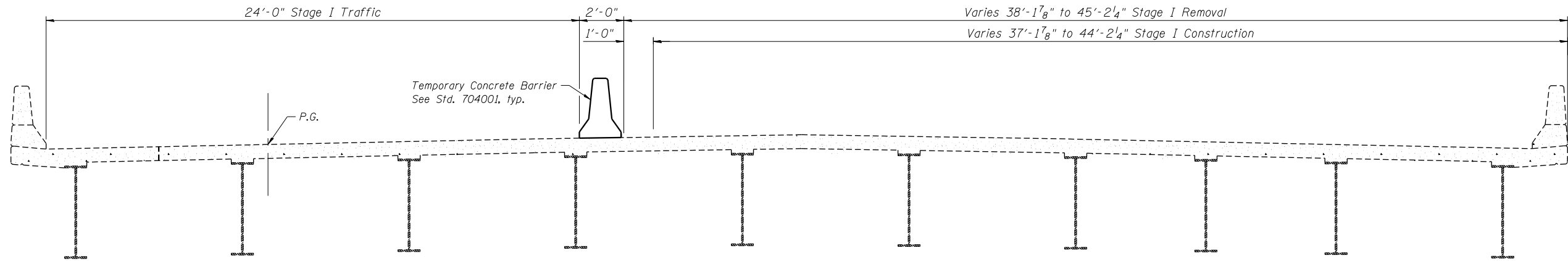
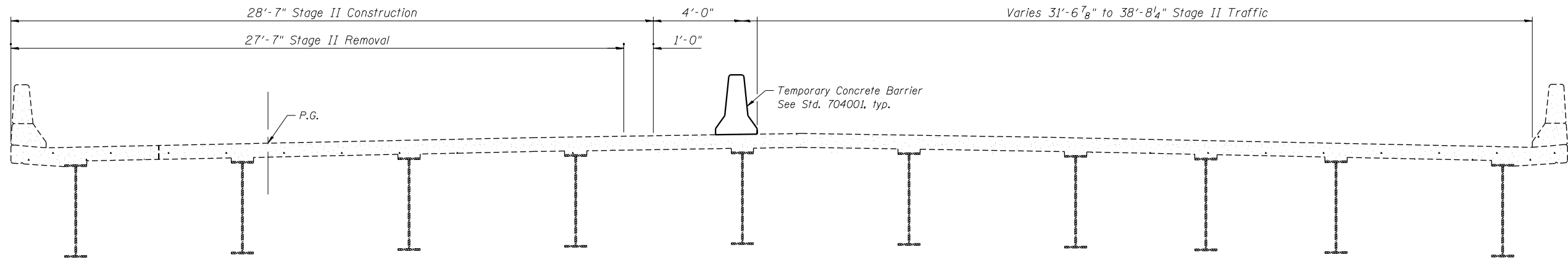


EXISTING CROSS SECTION
NB Roadway Looking North

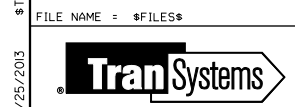


STAGE I CONSTRUCTION
NB Roadway Looking North



STAGE II CONSTRUCTION
NB Roadway Looking North

3/25/2013 \$TIME\$ - g:\S1\2\0001\Bridges\CAD\sheet\Bridg_0220-021\060221-76F10-03-Stage_Construction.dgn



USER NAME = sdnenn	DESIGNED - WAE	REVISED -
PLOT SCALE = #SCALE#	CHECKED - SDG	REVISED -
PLOT DATE = 3/25/2013	DRAWN - JD	REVISED -
	CHECKED - SDG	REVISED -

**STATE OF ILLINOIS
DEPARTMENT OF TRANSPORTATION**

**STAGE CONSTRUCTION
STRUCTURE NO. 060-0221 NB**

SHEET NO. 3 OF 19 SHEETS

F.A.I. RTE.	SECTION	COUNTY	TOTAL SHEETS	SHEET NO.
255	60-(8,9) RS-1	MADISON	206	153
				CONTRACT NO. 76F10
ILLINOIS FED. AID PROJECT				