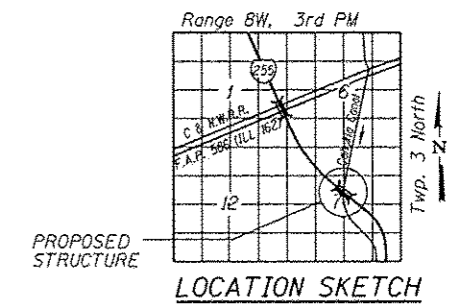
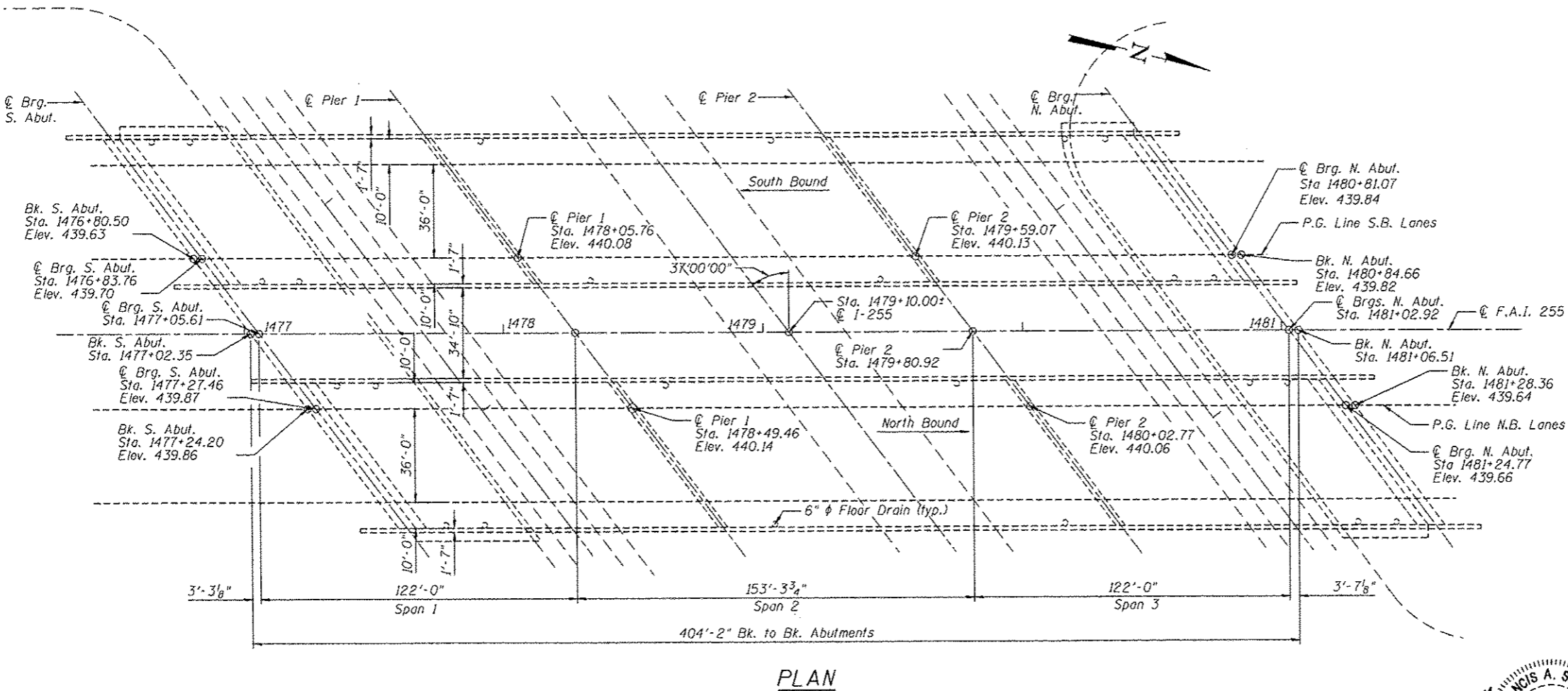
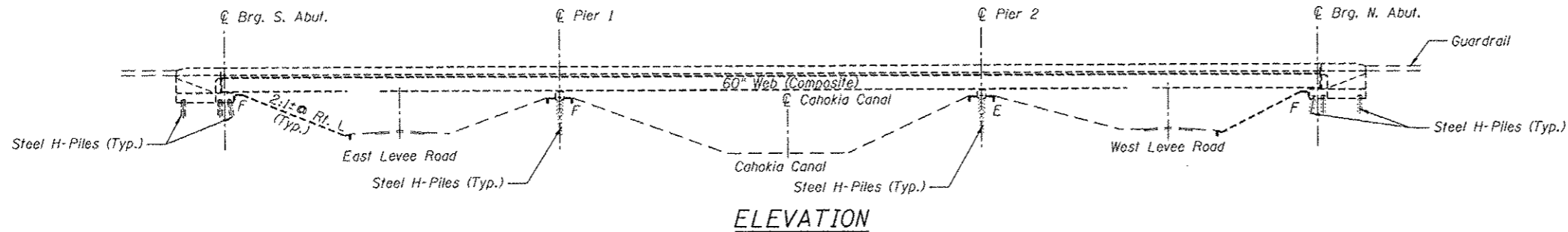


Bench Mark: SHB-13 RR Spike in P.P.A7 Sta. 1478+00 (I-255). 286' Lt., Elev.420.18

Existing Structures:

The original structures were constructed in 1985 as FAI Route 255, Section 60-8B-1. The dual structures consist of continuous three span composite welded plate girder bridges with 7 1/2" decks. The substructures originally consisted of stub abutments and concrete piers all on steel piles. In 2008 the north abutments were changed to semi-integral abutments. The structure measures 404'-2" back-to-back of abutment (NB & SB) and 59'-2" out-to-out of deck (NB & SB). The span lengths (CI bearing to CI bearing) are 122'-0", 153'-3 3/4" and 122'-0" (NB & SB). Both structures have a 37° right forward skew. Two lanes of traffic will be maintained utilizing stage construction.



F. Allen Smith
 FRANCIS A. SMITH JR.
 081-005860
 LICENSED
 STRUCTURAL
 ENGINEER
 ILLINOIS
 F. ALLEN SMITH, P.E., S.E.
 NO. 081-005860
 EXP. DATE 11/30/2014
 10/18/13

F.A.I. RTE. 255 OVER CAHOKIA CANAL
 SECTION 60-(8,9)RS-1
 STATION 1479+10.00
 MADISON COUNTY
 STRUCTURE NO. 060-0218 (N.B.)
 060-0219 (S.B.)

10/17/2013
 g:\slip\000\bridge\cadd\sheet\bridge\0218-0219\060-0218-0219-TB10-S-REF.dwg
 0218-0219\060-0218-0219-TB10-S-REF.dwg

FILE NAME = #FILES#	USER NAME = #dym#	DESIGNED - SOG	REVISIONS	STATE OF ILLINOIS DEPARTMENT OF TRANSPORTATION	GENERAL PLAN AND ELEVATION STRUCTURE NO. 060-0218NB & 060-0219SB SHEET NO. 1 OF 6 SHEETS	F.A.I. RTE.	SECTION	COUNTY	TOTAL SHEETS	SHEET NO.	
TRAN SYSTEMS	PLLOT SCALE = #SCALE#	CHECKED - FAS	REVISIONS			255	60-18,91 RS-1	MADISON	206	145	
	PLLOT DATE = 10/17/2013	DRAWN - DMC	REVISIONS			CONTRACT NO. 76F10					
		CHECKED - SOG	REVISIONS			ILLINOIS FED. AID PROJECT					