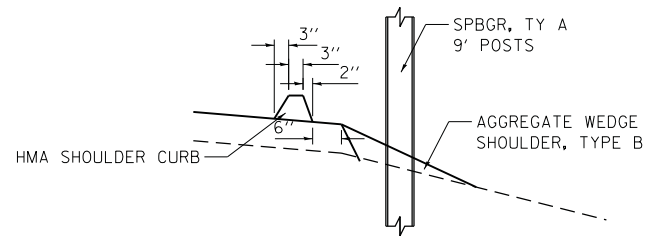
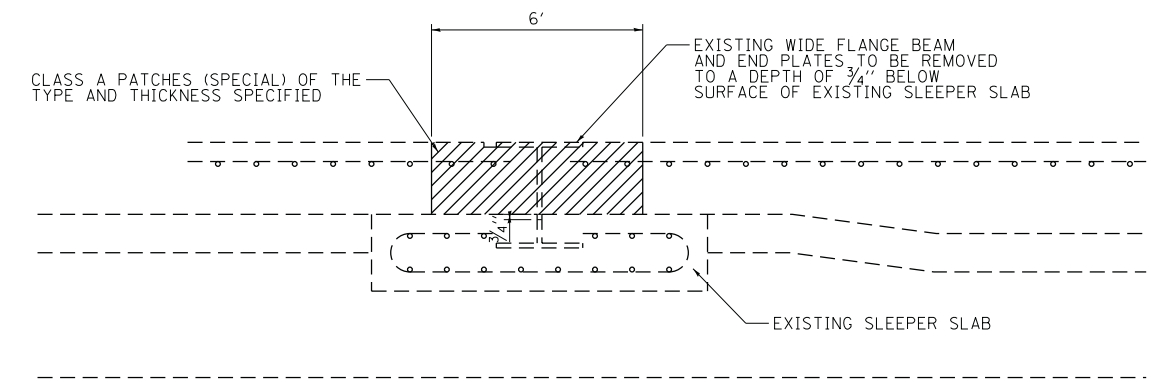
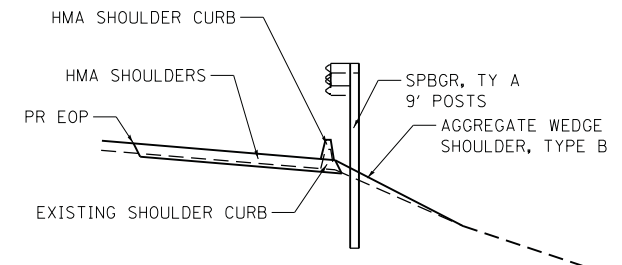


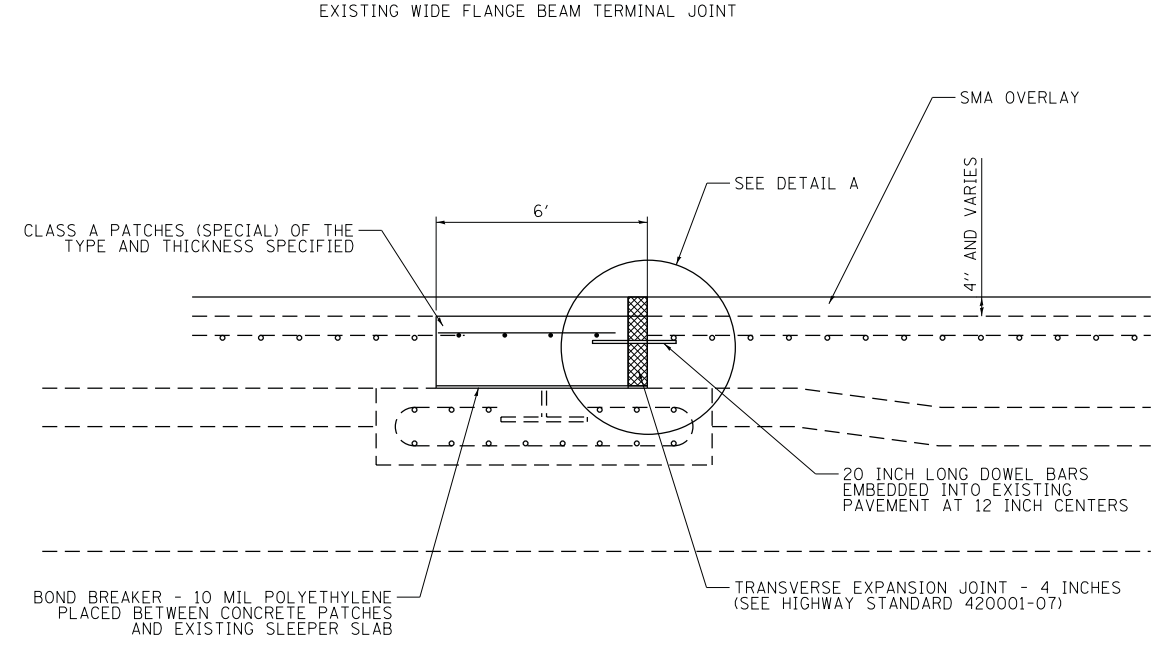
IMPACT ATTENUATOR BASE DETAIL



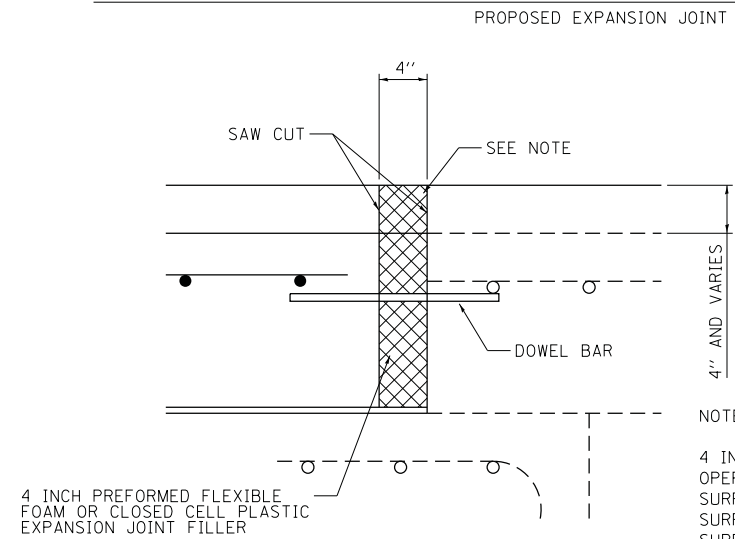
HOT-MIX ASPHALT SHOULDER CURB DETAIL



CLASS A PATCHES, (SPECIAL) – OF THE TYPE AND THICKNESS SPECIFIED



CLASS A PATCHES, (SPECIAL) – OF THE TYPE AND THICKNESS SPECIFIED



NOTE:
4 INCH EXPANSION JOINT CONSTRUCTED AS PART OF THE PATCHING OPERATION SHALL BE OVERLAID WITH THE PROPOSED LOCATION, THE SURFACE COURSE SHALL BE REMOVED BY SAW CUTTING THE HMA SURFACE TO RE-ESTABLISH THE 4 INCH EXPANSION JOINT AT THE SURFACE. THE JOINT SHALL THEN BE FILLED WITH A PREFORMED FLEXIBLE FOAM IN A MANNER MEETING THE APPROVAL OF THE ENGINEER.

DETAIL A

FILE NAME =	USER NAME = kschwier.john	DESIGNED - KJS	REVISED -
H:\6513 IDOT DB Ver\6513.09 WO 9 1-2550	layRevised\CADD_Sheets\0876F10-shr-pvmtde	DRAWN - KOJ/KJS	REVISED -
	PLOT SCALE = 10.0000' / in.	CHECKED - SAR	REVISED -
	PLOT DATE = 9/24/2013	DATE - 7/19/13	REVISED -

**STATE OF ILLINOIS
DEPARTMENT OF TRANSPORTATION**

MISCELLANEOUS DETAILS

SCALE: SHEET 6 OF 6 SHEETS STA. TO STA.

F.A.I. RTE.	SECTION	COUNTY	TOTAL SHEETS	SHEET NO.
255	60-18,9/RS-1	MADISON	206	114
CONTRACT NO. 76F10				
ILLINOIS FED. AID PROJECT				