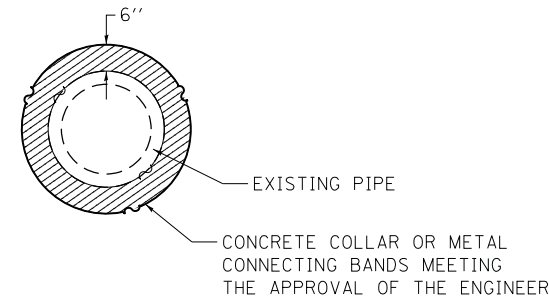


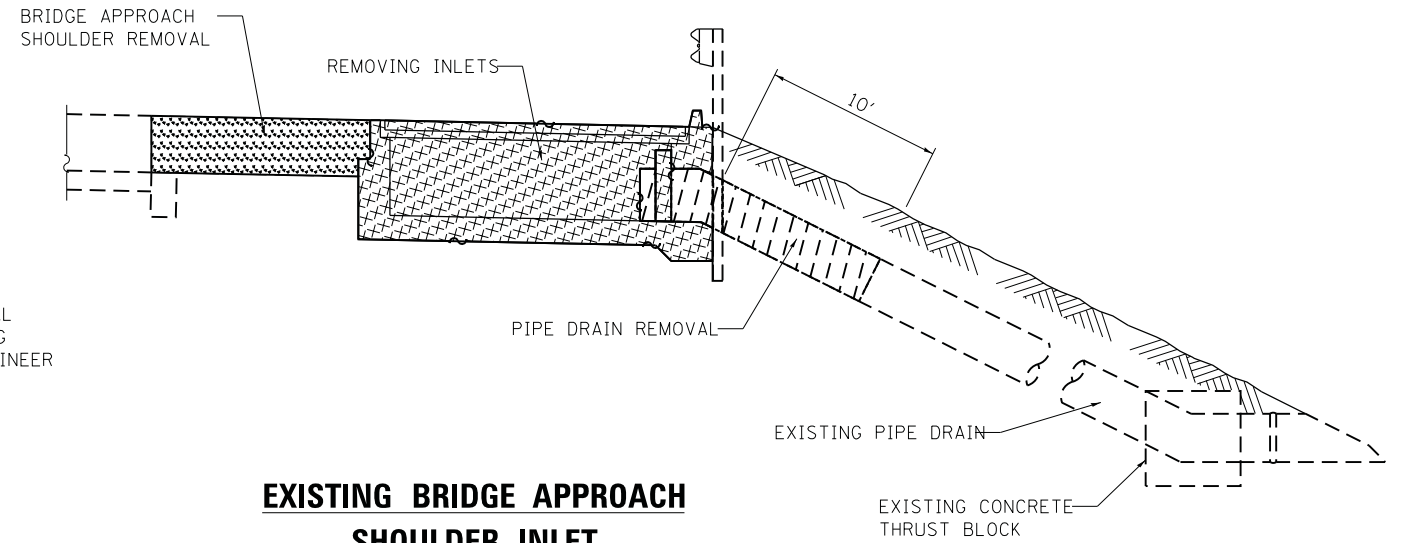
**CONCRETE COLLAR DETAIL OPTION**

NOT TO SCALE

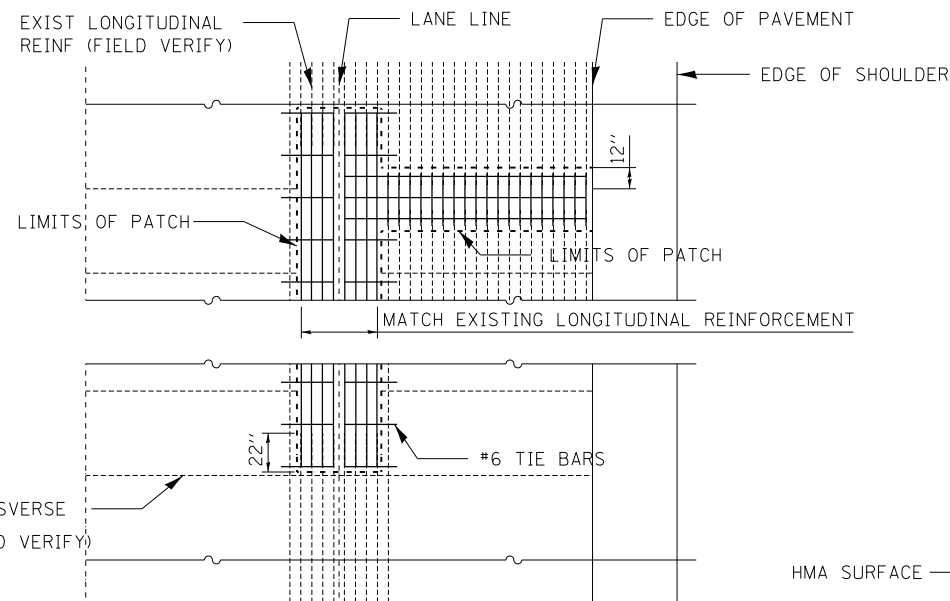


**SECTION A-A**

NOTE:  
CLASS SI CONCRETE SHALL BE USED.



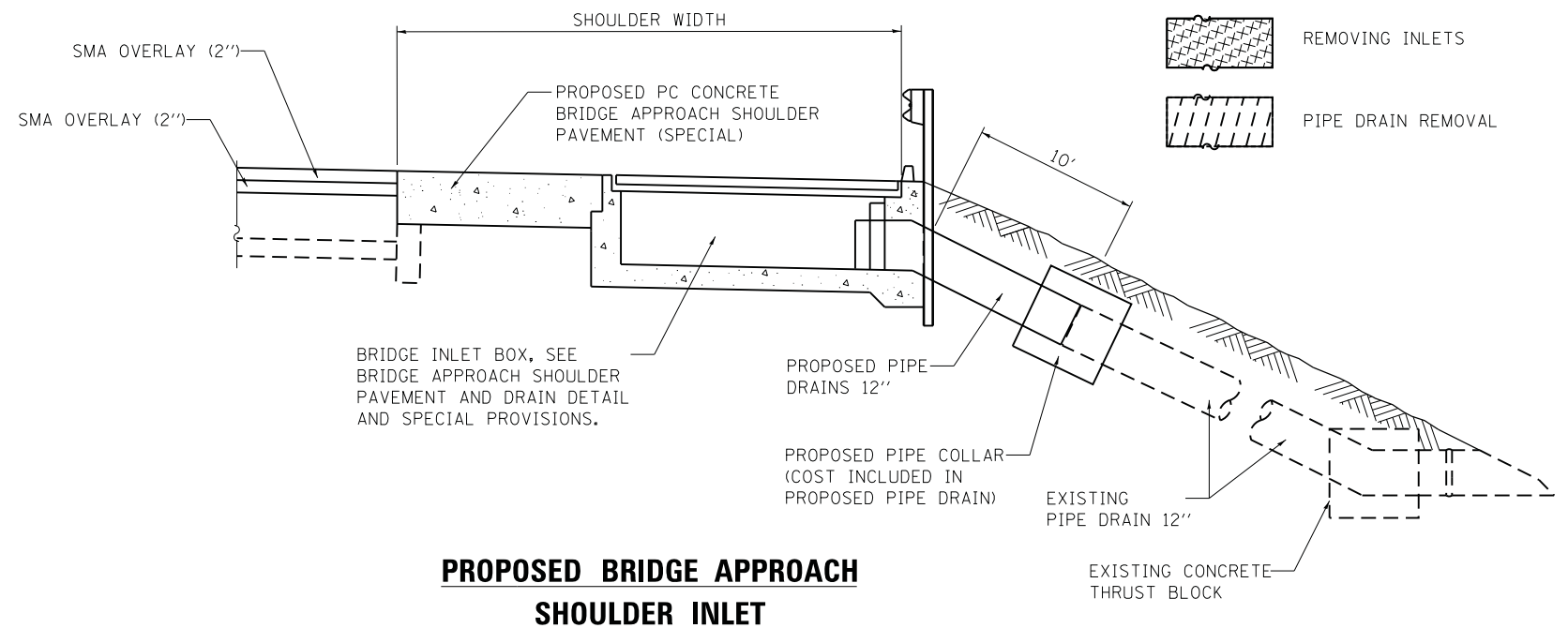
**EXISTING BRIDGE APPROACH SHOULDER INLET**



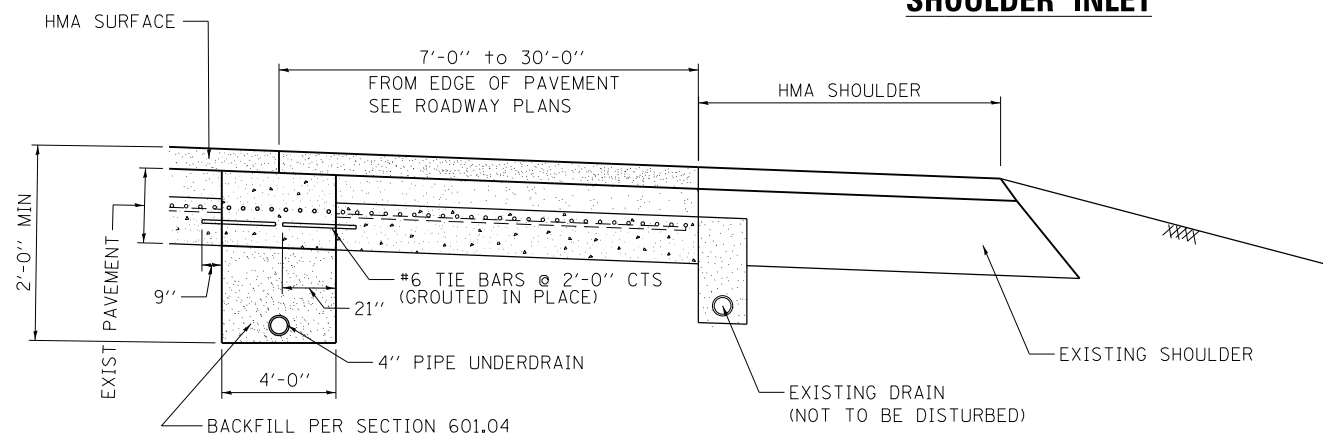
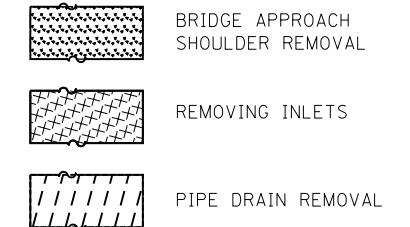
**CLASS A PATCH REINFORCEMENT DETAIL**

AT LOCATIONS WHERE PIPE UNDERDRAINS (SPECIAL) ARE TO BE INSTALLED, AT LEAST 12" OF THE EXISTING LONGITUDINAL REINFORCEMENT SHALL BE EXPOSED AND TIED TO THE PROPOSED PATCH REINFORCEMENT.

AT LOCATIONS WHERE PIPE UNDERDRAINS ARE TO BE INSTALLED, AT LEAST 22" OF THE EXISTING LONGITUDINAL REINFORCEMENT SHALL BE EXPOSED AND TIED TO THE PROPOSED PATCH REINFORCEMENT.



**PROPOSED BRIDGE APPROACH SHOULDER INLET**



**PIPE UNDERDRAIN AND CLASS A PATCH DETAILS**

(STA 1561+50 to STA 1593+63.64)

FILE NAME =	USER NAME = kschwierjohn	DESIGNED - KJS	REVISED -	<b>STATE OF ILLINOIS DEPARTMENT OF TRANSPORTATION</b>	<b>MISCELLANEOUS DETAILS</b>			F.A.I. RTE.	SECTION	COUNTY	TOTAL SHEETS	SHEET NO.
H:\6513 IDOT DB Ver\6513.09 WO 9 1-2550	10yRevised\CADD_Sheets\0876F10-shr-pvmtde	DRAWN - KOJ/KJS	REVISED -					255	60-18,9RS-1	MADISON	206	113
PLOT SCALE = 10.0000 "/ in.	CHECKED - SAR	REVISED -	CONTRACT NO. 76F10									
PLOT DATE = 9/24/2013	DATE - 7/19/13	REVISED -	ILLINOIS FED. AID PROJECT									
				SCALE:	SHEET 5 OF 6 SHEETS	STA.	TO STA.					