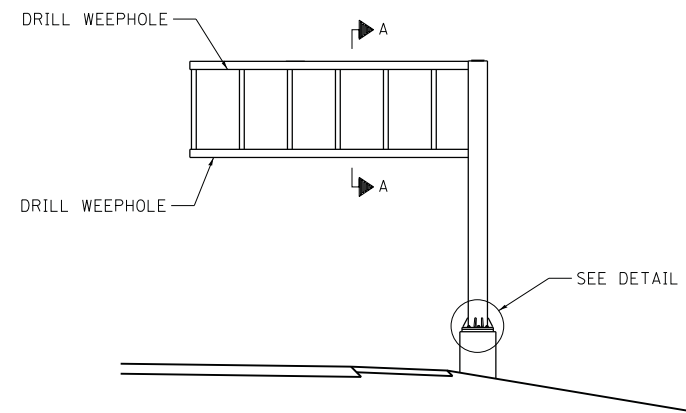


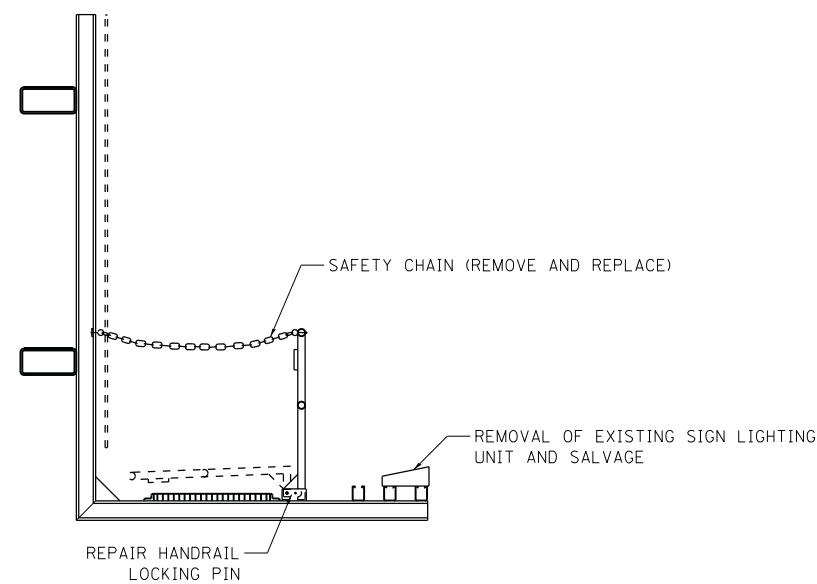
OVERHEAD SIGN STRUCTURE – ELEVATION

WEEPHOLES SHALL BE DRILLED AT LOW POINT(S) OF TOP AND BOTTOM CHORD. THE CONTRACTOR SHALL IDENTIFY AND MARK THE LOW POINT(S). LOCATIONS SHALL BE APPROVED BY THE ENGINEER PRIOR TO DRILLING OF HOLES.

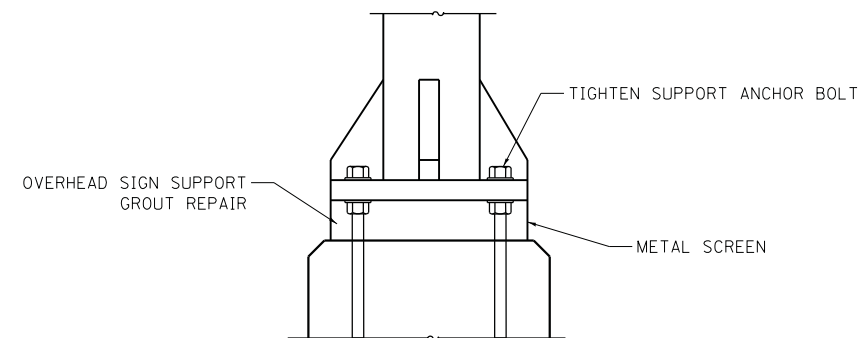


CANTILEVER SIGN STRUCTURE – ELEVATION

WEEPHOLES SHALL BE DRILLED AT LOW POINT(S) OF TOP AND BOTTOM CHORD. THE CONTRACTOR SHALL IDENTIFY AND MARK THE LOW POINT(S). LOCATIONS SHALL BE APPROVED BY THE ENGINEER PRIOR TO DRILLING OF HOLES.



SECTION A-A



DETAIL B

FILE NAME =	USER NAME = kschwier.john	DESIGNED - KJS	REVISED -
H:\6513 IDOT DB Ver\6513.09 WO 9 1-2550	layRevised\CADD_Sheets\0876F10-sht-sign.st	DRAWN - KOJ/KJS	REVISED -
	PLOT SCALE = 10.0000 ' / in.	CHECKED - SAR	REVISED -
	PLOT DATE = 9/24/2013	DATE - 7/19/13	REVISED -

**STATE OF ILLINOIS
DEPARTMENT OF TRANSPORTATION**

OVERHEAD SIGN STRUCTURE REPAIR DETAILS

SCALE: SHEET 1 OF 3 SHEETS STA. TO STA.

F.A.I. RTE.	SECTION	COUNTY	TOTAL SHEETS	SHEET NO.
255	60-18,9/RS-1	MADISON	206	105
CONTRACT NO. 76F10			ILLINOIS FED. AID PROJECT	