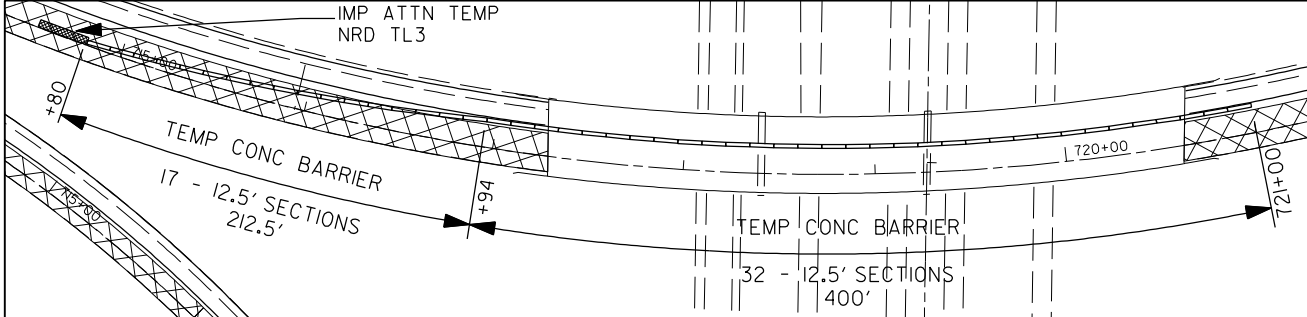
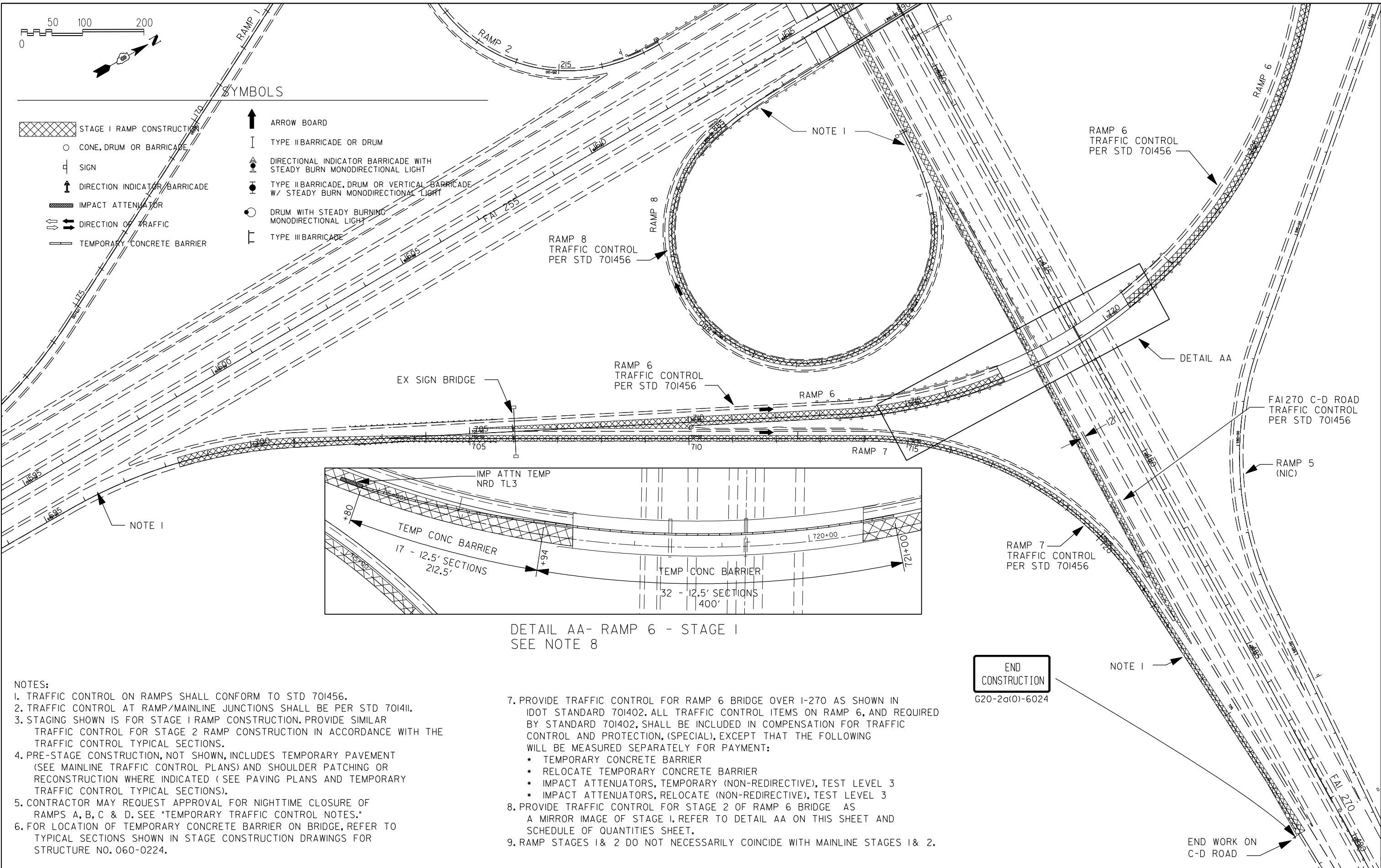


SYMBOLS

- STAGE I RAMP CONSTRUCTION
- CONE, DRUM OR BARRICADE
- SIGN
- DIRECTION INDICATOR BARRICADE
- IMPACT ATTENUATOR
- DIRECTION OF TRAFFIC
- TEMPORARY CONCRETE BARRIER
- ARROW BOARD
- TYPE II BARRICADE OR DRUM
- DIRECTIONAL INDICATOR BARRICADE WITH STEADY BURN MONODIRECTIONAL LIGHT
- TYPE II BARRICADE, DRUM OR VERTICAL BARRICADE W/ STEADY BURN MONODIRECTIONAL LIGHT
- DRUM WITH STEADY BURNING MONODIRECTIONAL LIGHT
- TYPE III BARRICADE



DETAIL AA- RAMP 6 - STAGE I
SEE NOTE 8

- NOTES:**
1. TRAFFIC CONTROL ON RAMPS SHALL CONFORM TO STD 701456.
 2. TRAFFIC CONTROL AT RAMP/MAINLINE JUNCTIONS SHALL BE PER STD 701411.
 3. STAGING SHOWN IS FOR STAGE I RAMP CONSTRUCTION. PROVIDE SIMILAR TRAFFIC CONTROL FOR STAGE 2 RAMP CONSTRUCTION IN ACCORDANCE WITH THE TRAFFIC CONTROL TYPICAL SECTIONS.
 4. PRE-STAGE CONSTRUCTION, NOT SHOWN, INCLUDES TEMPORARY PAVEMENT (SEE MAINLINE TRAFFIC CONTROL PLANS) AND SHOULDER PATCHING OR RECONSTRUCTION WHERE INDICATED (SEE PAVING PLANS AND TEMPORARY TRAFFIC CONTROL TYPICAL SECTIONS).
 5. CONTRACTOR MAY REQUEST APPROVAL FOR NIGHTTIME CLOSURE OF RAMPS A, B, C & D. SEE "TEMPORARY TRAFFIC CONTROL NOTES."
 6. FOR LOCATION OF TEMPORARY CONCRETE BARRIER ON BRIDGE, REFER TO TYPICAL SECTIONS SHOWN IN STAGE CONSTRUCTION DRAWINGS FOR STRUCTURE NO. 060-0224.

7. PROVIDE TRAFFIC CONTROL FOR RAMP 6 BRIDGE OVER I-270 AS SHOWN IN IDOT STANDARD 701402. ALL TRAFFIC CONTROL ITEMS ON RAMP 6, AND REQUIRED BY STANDARD 701402, SHALL BE INCLUDED IN COMPENSATION FOR TRAFFIC CONTROL AND PROTECTION, (SPECIAL), EXCEPT THAT THE FOLLOWING WILL BE MEASURED SEPARATELY FOR PAYMENT:
 - TEMPORARY CONCRETE BARRIER
 - RELOCATE TEMPORARY CONCRETE BARRIER
 - IMPACT ATTENUATORS, TEMPORARY (NON-REDIRECTIVE), TEST LEVEL 3
 - IMPACT ATTENUATORS, RELOCATE (NON-REDIRECTIVE), TEST LEVEL 3
8. PROVIDE TRAFFIC CONTROL FOR STAGE 2 OF RAMP 6 BRIDGE AS A MIRROR IMAGE OF STAGE I. REFER TO DETAIL AA ON THIS SHEET AND SCHEDULE OF QUANTITIES SHEET.
9. RAMP STAGES I & 2 DO NOT NECESSARILY COINCIDE WITH MAINLINE STAGES I & 2.

END CONSTRUCTION
G20-2a(0)-6024

END WORK ON C-D ROAD

PLOT DRIVER = M:\Admin\Reference Data\CAD Support\workspace5\tonard\sp\inter-hof.f.plt
PEN TABLE = M:\Admin\Reference Data\CAD Support\workspace5\tonard\sp\inter-hof.f.plt

GONZALEZ COMPANIES, LLC 618-222-2221 WWW.GONZALEZCOS.COM

FILE NAME = 0876F10-sh154-RAMPS 6-7-8-stage I	DESIGNED - JG	REVISED - -
DESIGNED BY = Note	DRAWN - NC	REVISED - -
PLOT SCALE = 200.0000' / IN.	CHECKED - CH	REVISED - -
PLOT DATE = 11/19/2013	DATE - 09/23/2013	REVISED - -

**STATE OF ILLINOIS
DEPARTMENT OF TRANSPORTATION**

**TEMPORARY TRAFFIC CONTROL
- RAMPS 6, 7 & 8**

SCALE: 1"=100' SHEET NO. 11 OF 37 SHEETS STA. TO STA.

F.A.I. RTE.	SECTION	COUNTY	TOTAL SHEETS	SHEET NO.
255	60-(8,9)RS-1	MADISON	206	54
CONTRACT NO. 76F10			ILLINOIS FED. AID PROJECT	