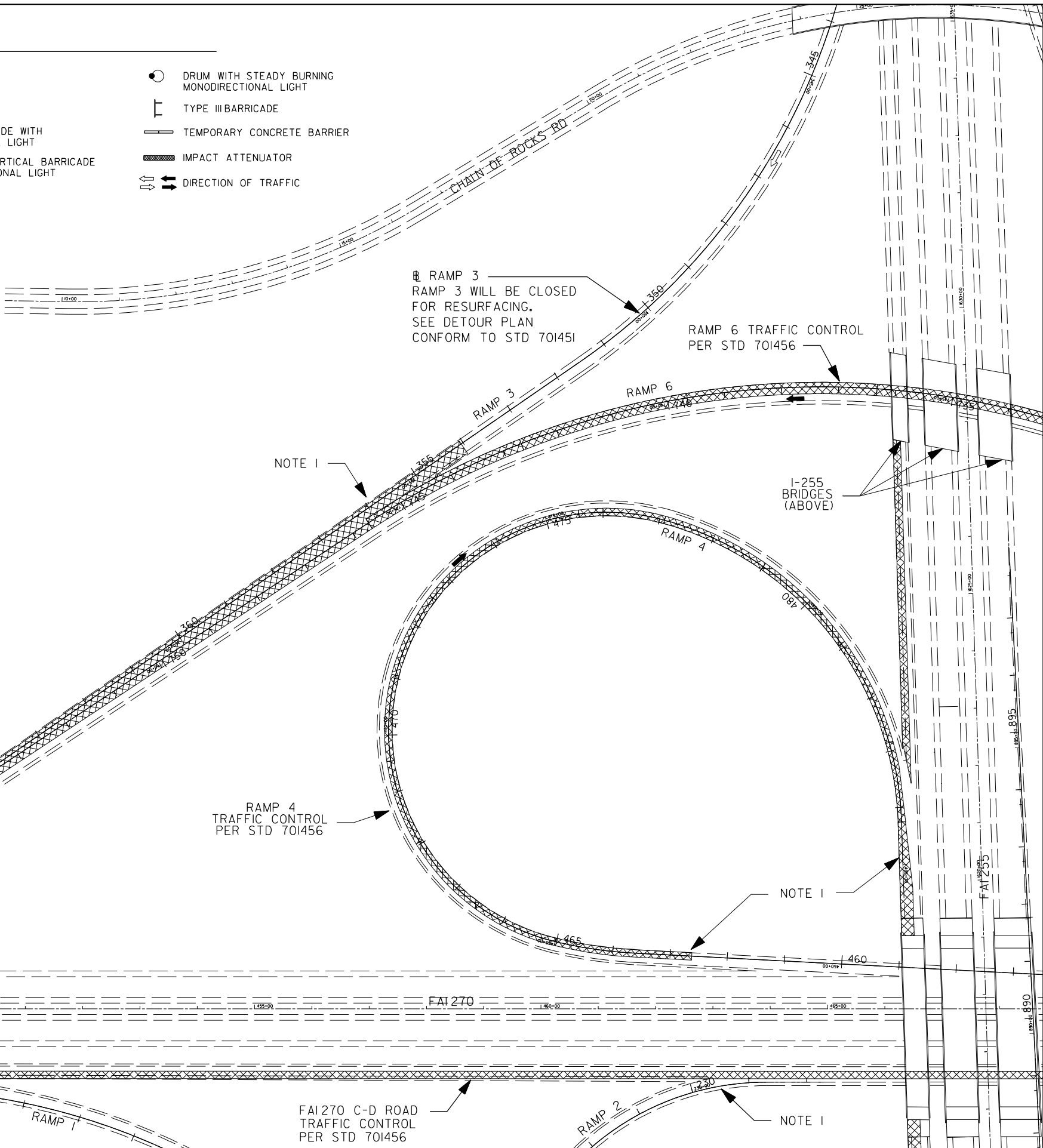


SYMBOLS

- STAGE I RAMP CONSTRUCTION
- CONE, DRUM OR BARRICADE
- SIGN
- DIRECTION INDICATOR BARRICADE
- ARROW BOARD
- TYPE II BARRICADE OR DRUM
- DIRECTIONAL INDICATOR BARRICADE WITH STEADY BURN MONODIRECTIONAL LIGHT
- TYPE II BARRICADE, DRUM OR VERTICAL BARRICADE W/ STEADY BURN MONODIRECTIONAL LIGHT
- DRUM WITH STEADY BURN MONODIRECTIONAL LIGHT
- TYPE III BARRICADE
- TEMPORARY CONCRETE BARRIER
- IMPACT ATTENUATOR
- DIRECTION OF TRAFFIC

- NOTES:**
1. TRAFFIC CONTROL ON RAMPS SHALL CONFORM TO STD 701456.
 2. TRAFFIC CONTROL AT RAMP/MAINLINE JUNCTIONS SHALL BE PER STD 701411.
 3. STAGING SHOWN IS FOR STAGE I RAMP CONSTRUCTION. PROVIDE SIMILAR TRAFFIC CONTROL FOR STAGE 2 RAMP CONSTRUCTION IN ACCORDANCE WITH THE TRAFFIC CONTROL TYPICAL SECTIONS.
 4. PRE-STAGE CONSTRUCTION, NOT SHOWN, INCLUDES TEMPORARY PAVEMENT (SEE MAINLINE TRAFFIC CONTROL PLANS) AND SHOULDER PATCHING OR RECONSTRUCTION WHERE INDICATED (SEE PAVING PLANS AND TEMPORARY TRAFFIC CONTROL TYPICAL SECTIONS).
 5. CONTRACTOR MAY REQUEST APPROVAL FOR NIGHTTIME CLOSURE OF RAMPS A, B, C & D. SEE "TEMPORARY TRAFFIC CONTROL NOTES."
 6. RAMP STAGES 1 & 2 DO NOT NECESSARILY COINCIDE WITH MAINLINE STAGES 1 & 2.



PLOT DRIVER = M:\Admin\Reference Data\CAD_Support\workspace\standard\plot\p10\p10\inter-hof1.fpl
 PEN TABLE = M:\Admin\Reference Data\CAD_Support\workspace\standard\plot\p10\p10\inter-hof1.tbl

PROVIDE APPROACH TRAFFIC CONTROL DEVICES AND SIGNING PER STD 701400 DURING WORK ON C-D ROAD.

EX SIGN BRIDGE

FAI 270 C-D ROAD TRAFFIC CONTROL PER STD 701456

GONZALEZ COMPANIES, LLC 618-222-2221 WWW.GONZALEZCOS.COM

FILE NAME = D876F10-sh153-RAMPS 3-4-stage1	USER NAME = Note	DESIGNED - JG	REVISED - -
		DRAWN - NC	REVISED - -
		CHECKED - CH	REVISED - -
		DATE - 09/23/2013	REVISED - -

**STATE OF ILLINOIS
DEPARTMENT OF TRANSPORTATION**

**TEMPORARY TRAFFIC CONTROL
- RAMPS 3, 4, 6 & I-270 C-D ROAD**

SCALE: 1"=100' SHEET NO. 10 OF 37 SHEETS STA. TO STA.

F.A.I. RTE.	SECTION	COUNTY	TOTAL SHEETS	SHEET NO.
255	60-(8,9)RS-1	MADISON	206	53
CONTRACT NO. 76F10			ILLINOIS FED. AID PROJECT	