

F.A.P. RTE.	SECTION	COUNTY	TOTAL SHEETS	SHEET NO.
327	D7 HMA RESURF 2014-2	CLAY	26	1
ILLINOIS		CONTRACT NO. 74630		

STATE OF ILLINOIS
DEPARTMENT OF TRANSPORTATION
DIVISION OF HIGHWAYS

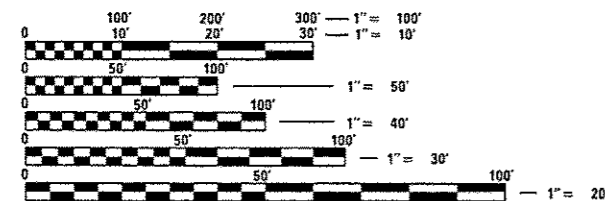
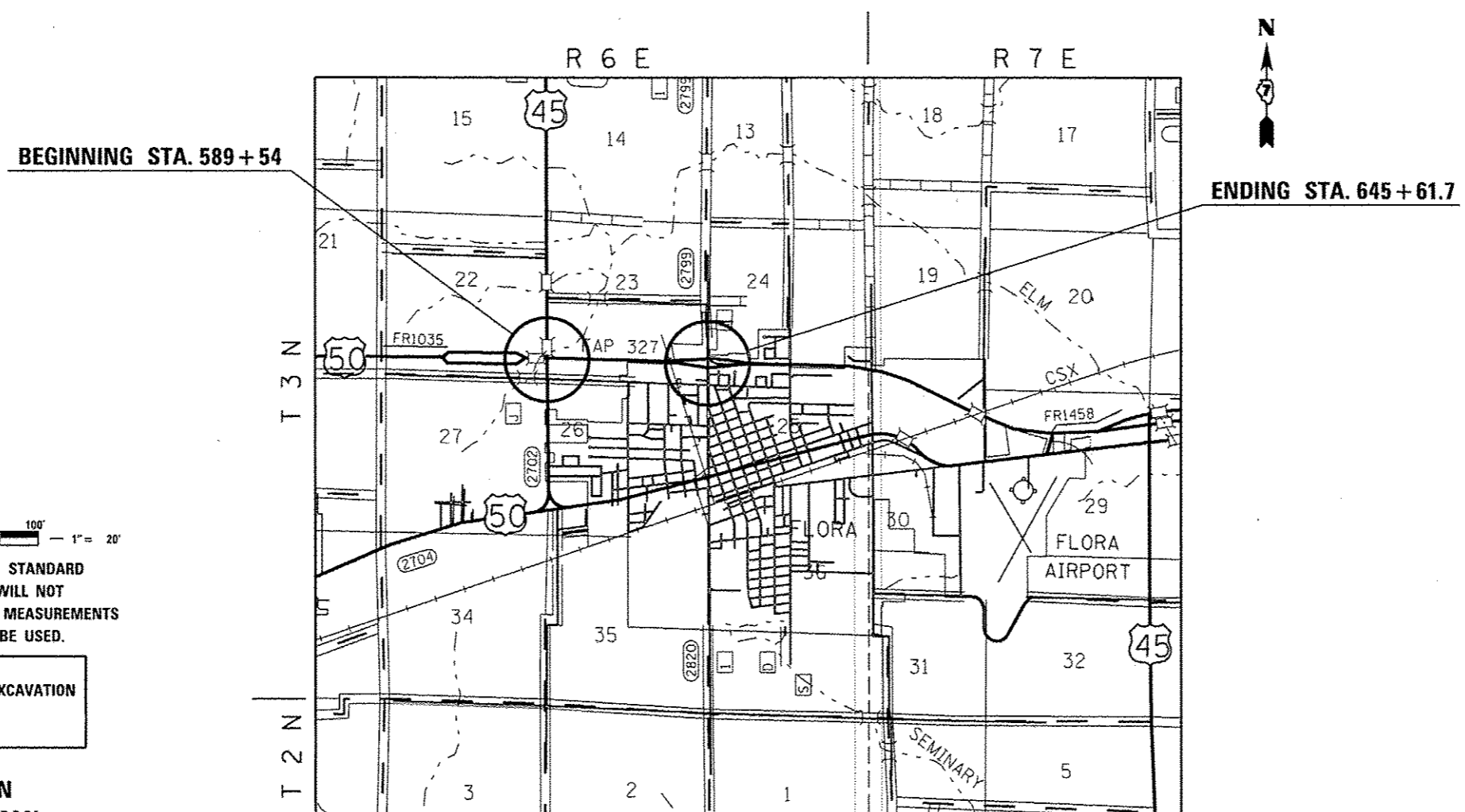
**PROPOSED
HIGHWAY PLANS**

F.A.P. ROUTE 327 (U.S. RTE. 45/50)
SECTION D7 HMA RESURF 2014-2

**RESURFACING
CLAY COUNTY**
C-97-076-13

FOR INDEX OF SHEETS, SEE SHEET NO. 2

ADT = 6500 (2008)



FULL SIZE PLANS HAVE BEEN PREPARED USING STANDARD ENGINEERING SCALES. REDUCED SIZED PLANS WILL NOT CONFORM TO STANDARD SCALES. IN MAKING MEASUREMENTS ON REDUCED PLANS, THE ABOVE SCALES MAY BE USED.

J.U.L.I.E.
JOINT UTILITY LOCATION INFORMATION FOR EXCAVATION
1-800-892-0123
OR 811

PROJECT ENGINEER: TOM RONAN
PROJECT MANAGER: ROSS BIERMAN
PHONE: (217)-342-8320
CONTRACT NO. 74630

GROSS LENGTH = 5607.7 FT. = 1.06 MILE
NET LENGTH = 5607.7 FT. = 1.06 MILE

STATE OF ILLINOIS
DEPARTMENT OF TRANSPORTATION
DIVISION OF HIGHWAYS

SUBMITTED Sept 26 20 13
Roma L. Driskell
DEPUTY DIRECTOR OF HIGHWAYS, REGION ENGINEER

Dec 6 20 13
John D. Baranzelli, P.E.
ENGINEER OF DESIGN AND ENVIRONMENT

Dec 6 20 13
Omer Osman, P.E.
DIRECTOR OF HIGHWAYS, CHIEF ENGINEER

**PRINTED BY THE AUTHORITY
OF THE STATE OF ILLINOIS**