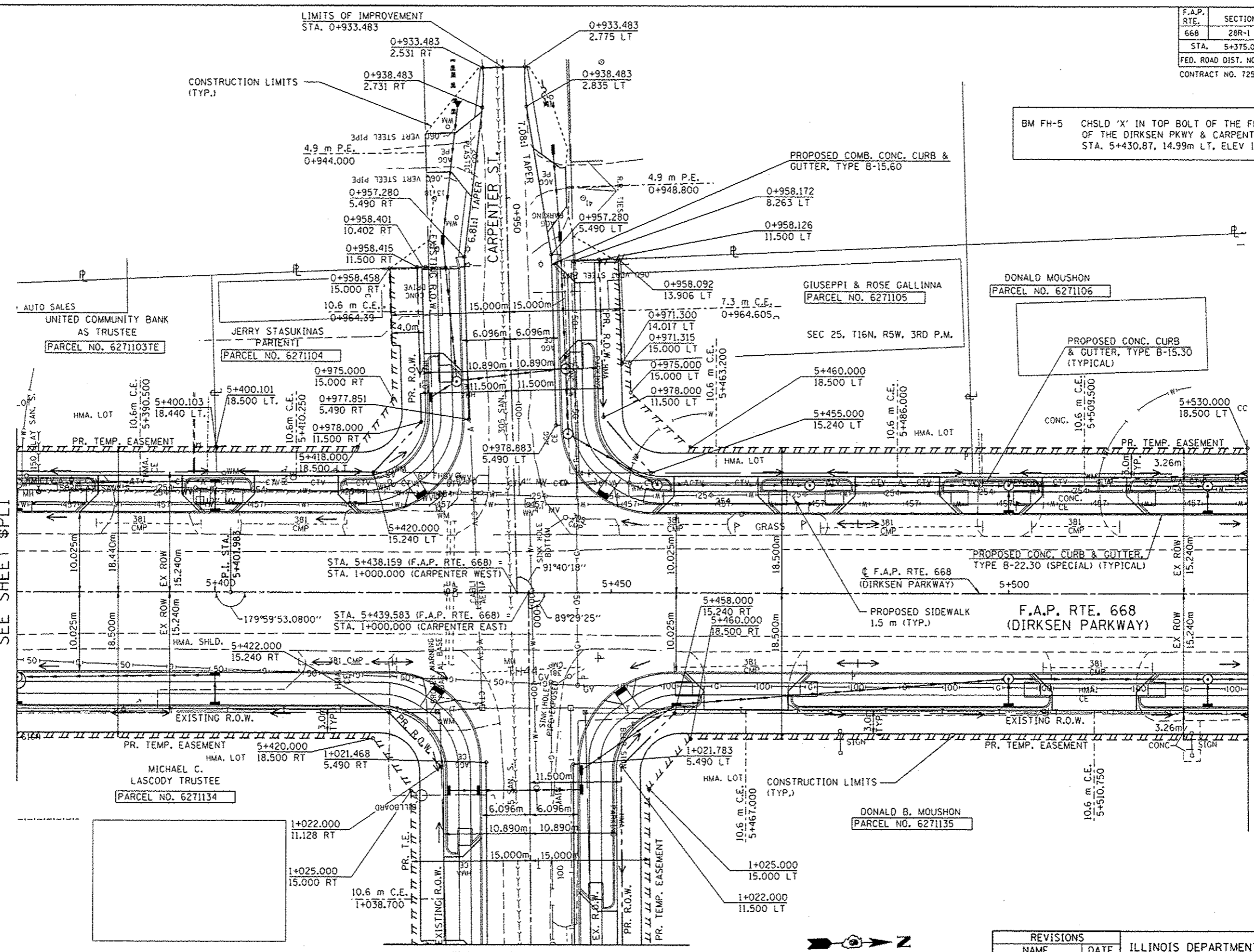


F.A.P. RTE.	SECTION	COUNTY	TOTAL SHEETS	SHEET NO.
668	28R-1	SANGAMON	354	063
STA. 5+375.000 TO STA. 5+530.000				
FED. ROAD DIST. NO.		ILLINOIS FED. AID PROJECT		
CONTRACT NO. 72501				

BM FH-5 CHSLD 'X' IN TOP BOLT OF THE FH ON THE SW CORNER OF THE DIRKSEN PKWY & CARPENTER ST. INTERSECTION STA. 5+430.87, 14.99m LT, ELEV 181.670m

MATCH LINE STA. 5+375
SEE SHEET \$PL1

MATCH LINE STA. 5+530
SEE SHEET \$PL3



NOTE:
SEE DRAINAGE PLANS FOR STATION, OFFSET, AND ELEVATION INFORMATION FOR PROPOSED CURB AND GUTTER SECTIONS BEYOND PROPOSED SIDEWALK. ALL CURB AND GUTTER POINTS ARE CALLED OUT TO THE TOP OF FACE OF CURB.

REVISIONS	
NAME	DATE

ILLINOIS DEPARTMENT OF TRANSPORTATION
ROADWAY PLANS
F.A.P. ROUTE 668 (DIRKSEN PARKWAY)
SECTION 28R-1
SANGAMON COUNTY

SCALE 1 : 250
DATE 06/2013

DRAWN BY RK
CHECKED BY FML

BY	DATE

BY	DATE