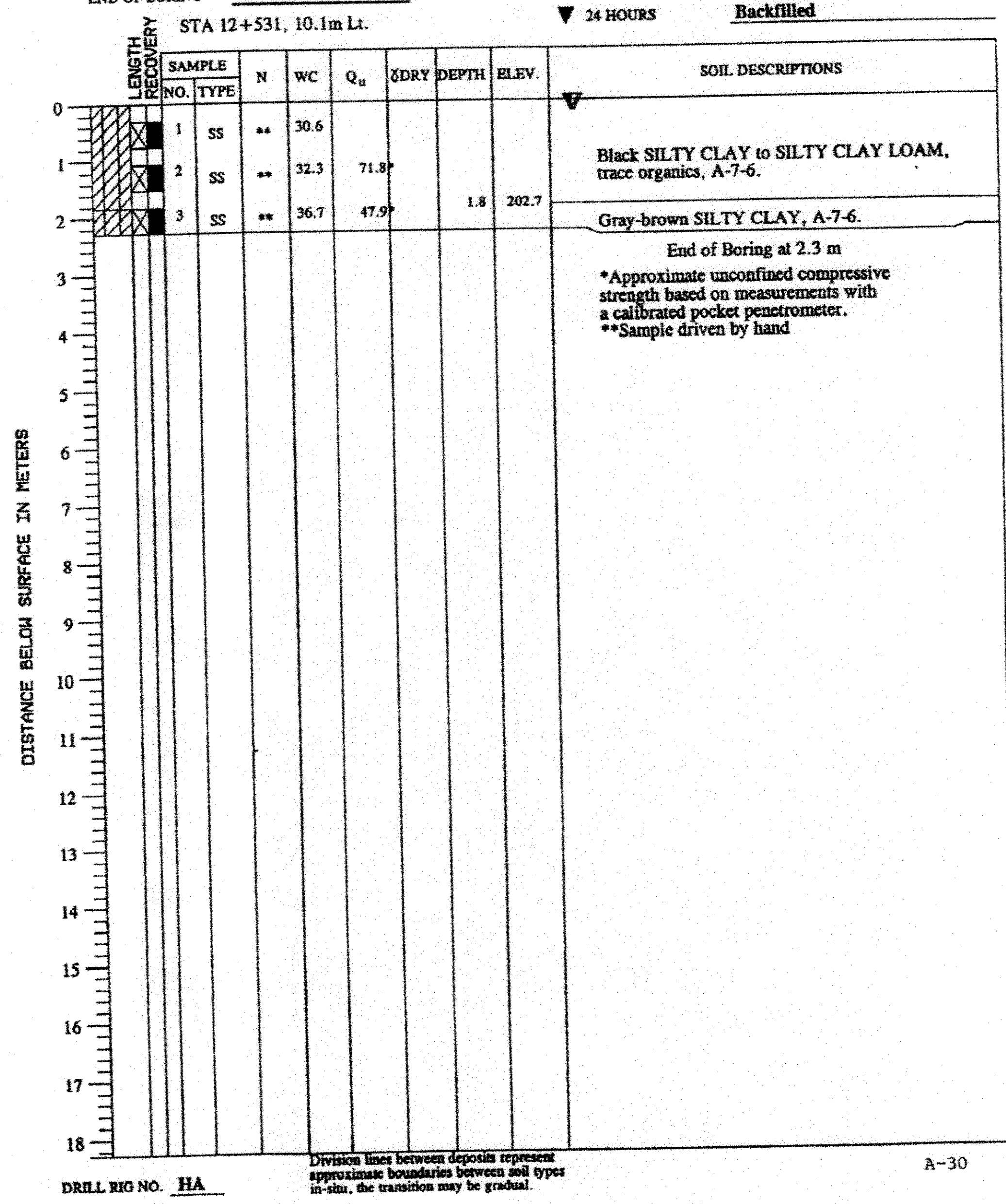


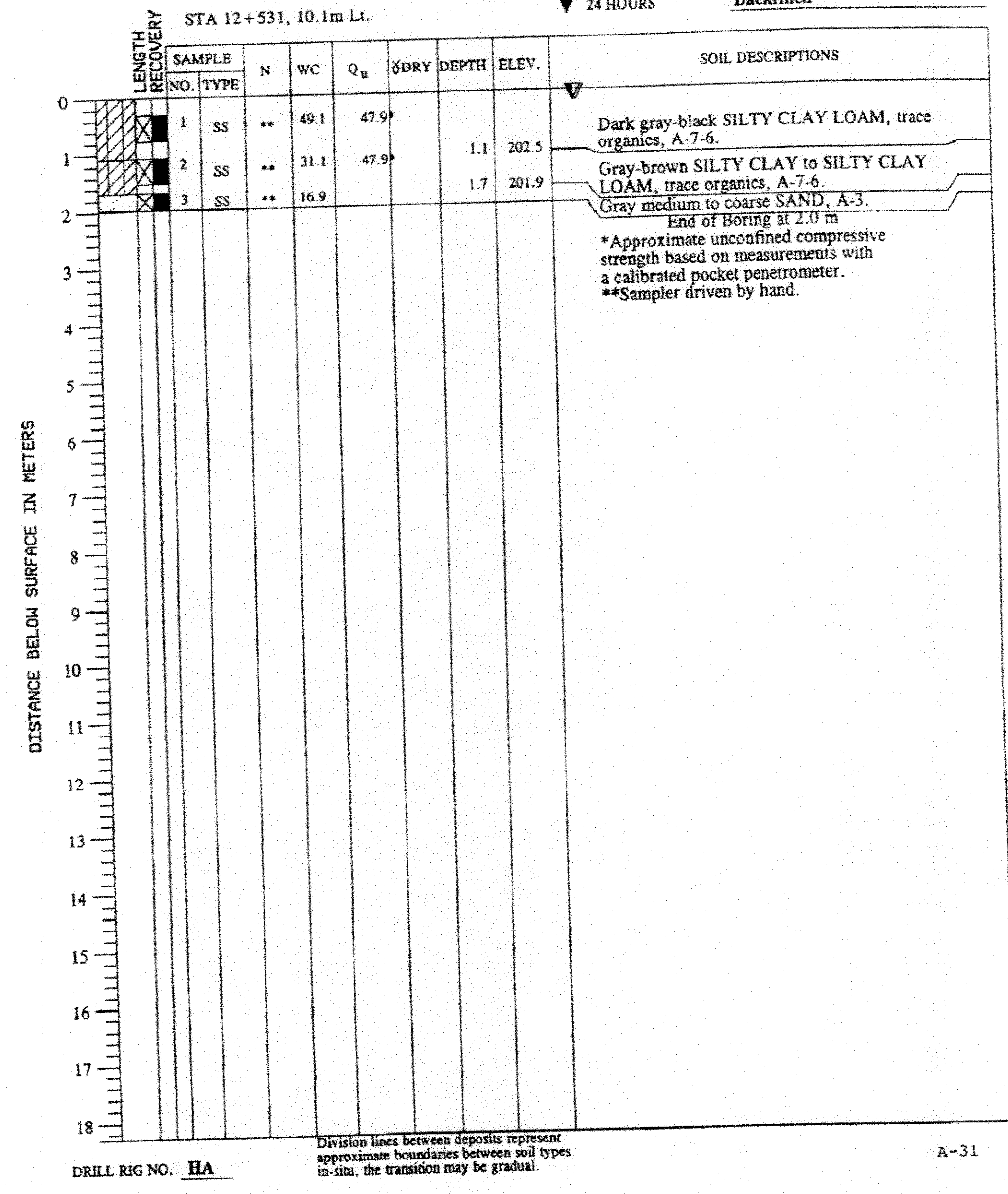
RTE.	SECTION	COUNTY	TOTAL SHEETS	SHEET NO.
619	*	PUTNAM	77	49
FED. ROAD DIST. NO.		ILLINOIS	FED. AID PROJECT-	
* 120 BR, CR				

CONTRACT NO. 68740

PROJECT Structure 078-0030, Illinois Route 71, Putnam County, IL
 CLIENT TransSystems Corp., Schaumburg, IL
 BORING B-5 DATE STARTED 1-26-98 DATE COMPLETED 1-26-98 JOB 43,757
 ELEVATIONS WATER TABLE
 GROUND SURFACE 204.5 WHILE DRILLING 0.2m
 END OF BORING 202.2 AT END OF BORING 0.2m
 24 HOURS Backfilled



PROJECT Structure 078-0030, Illinois Route 71, Putnam County, IL
 CLIENT TransSystems Corp., Schaumburg, IL
 BORING B-6 DATE STARTED 1-26-98 DATE COMPLETED 1-26-98 JOB 43,757
 ELEVATIONS WATER TABLE
 GROUND SURFACE 203.5 WHILE DRILLING 0.2m
 END OF BORING 201.5 AT END OF BORING 0.2m
 24 HOURS Backfilled



FILE: g:\401\2000\0003902\cod\cdiv_078_2007\0782007.dwg

REVISIONS	
NAME	DATE

ILLINOIS DEPARTMENT OF TRANSPORTATION
SOIL BORINGS - 2 OF 2
 ILLINOIS ROUTE 71 OVER DRAINAGE DITCH
 F.A.P. RT. 619 - SECTION 120 BR
 PUTNAM COUNTY
 STATION 12+530
 STRUCTURE No. 078-2007

DATE: 09/21/09 DESIGNED BY: MV DRAWN BY: KDS
 CHECKED BY: SG CHECKED BY: MV

TranSystems
 SOIL PENETROMETER DRIVING GUIDE
 SCHAMBURG, IL 60197-3000
 TEL: (815) 600-3000
 FAX: (815) 600-3000