

RTE.	SECTION	COUNTY	TOTAL SHEETS	SHEET NO.
619	*	PUTNAM	77	48

FED. ROAD DIST. NO. ILLINOIS FED. AID PROJECT-

* 120 BR CR

CONTRACT NO. 68740

PROJECT **Structure 078-0030, Illinois Route 71, Putnam County, IL**

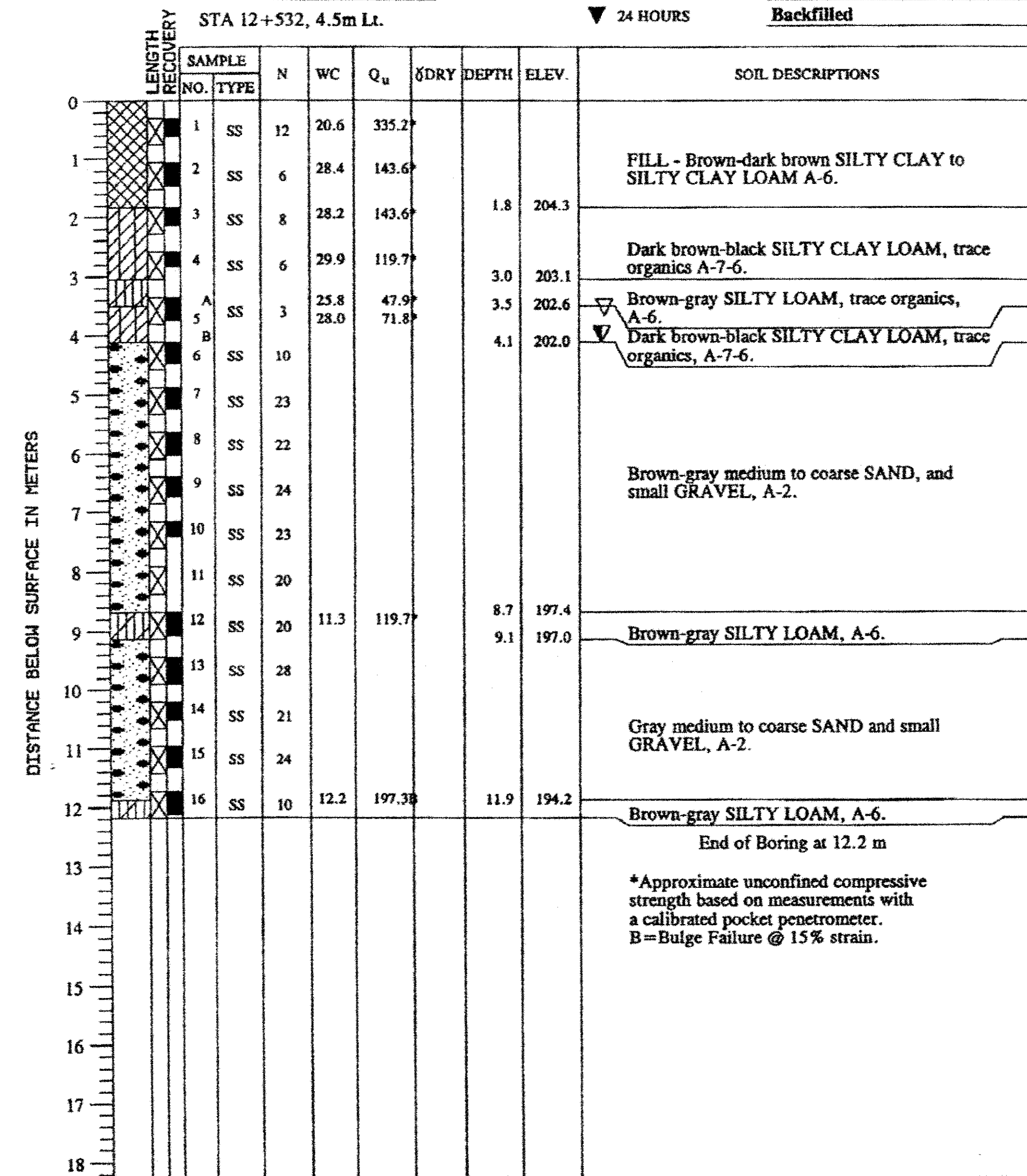
CLIENT **TransSystems Corp., Schaumburg, IL**

BORING **B-1** DATE STARTED **1-19-98** DATE COMPLETED **1-19-98** JOB **43,757**



ELEVATIONS
 GROUND SURFACE **206.1**
 END OF BORING **193.9**

WATER TABLE
 WHILE DRILLING **4.1m**
 AT END OF BORING **3.7m**
 24 HOURS **Backfilled**



DRILL RIG NO. **117**

Division lines between deposits represent approximate boundaries between soil types in-situ, the transition may be gradual.

A-26

PROJECT **Structure 078-0030, Illinois Route 71, Putnam County, IL**

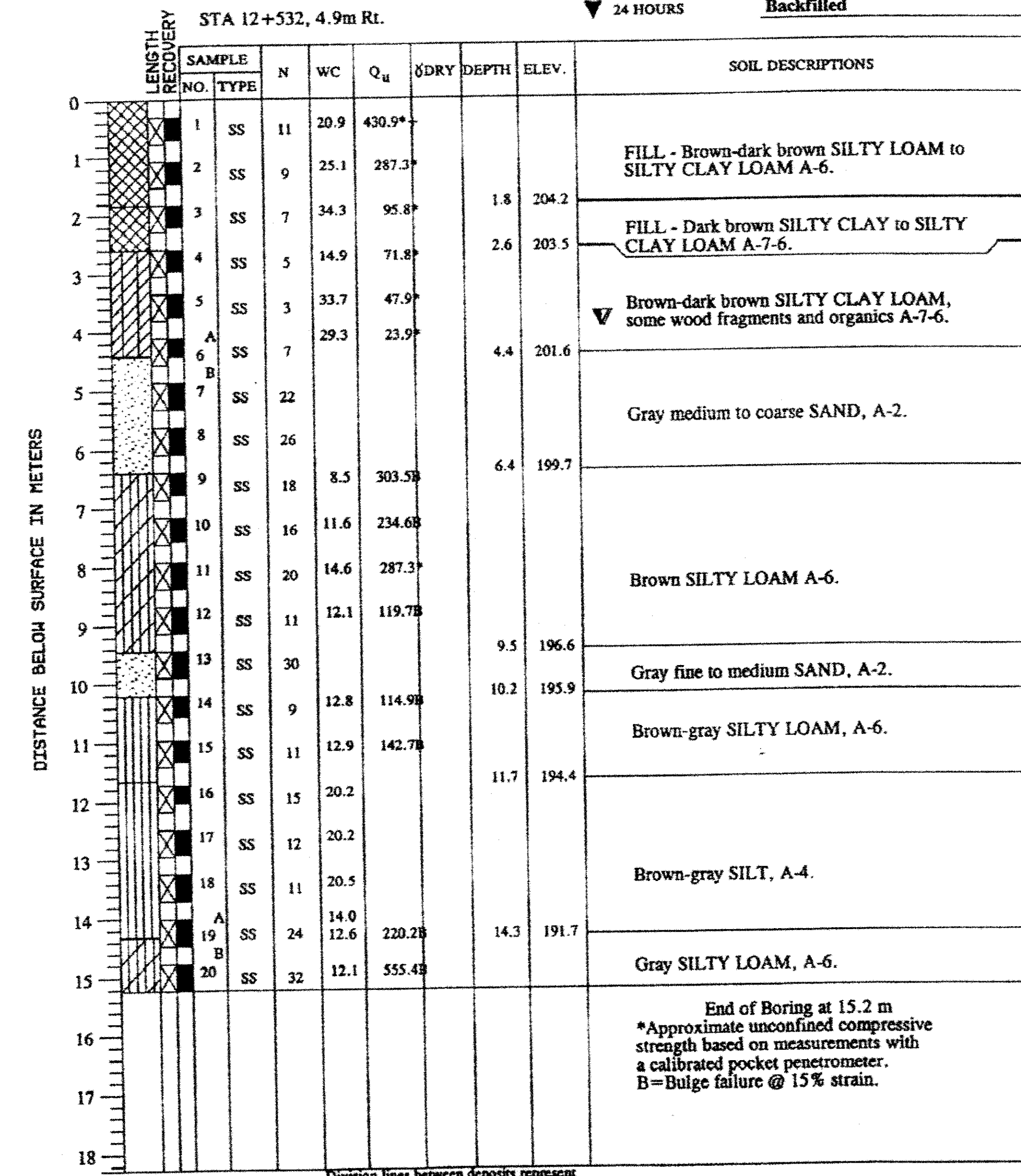
CLIENT **TransSystems Corp., Schaumburg, IL**

BORING **B-2** DATE STARTED **1-20-98** DATE COMPLETED **1-20-98** JOB **43,757**



ELEVATIONS
 GROUND SURFACE **206.0**
 END OF BORING **190.8**

WATER TABLE
 WHILE DRILLING **4.0m**
 AT END OF BORING **4.0m**
 24 HOURS **Backfilled**



DRILL RIG NO. **117**

Division lines between deposits represent approximate boundaries between soil types in-situ, the transition may be gradual.

A-27

REVISIONS	
NAME	DATE

ILLINOIS DEPARTMENT OF TRANSPORTATION
SOIL BORINGS - 1 OF 2
 ILLINOIS ROUTE 71 OVER DRAINAGE DITCH
 F.A.P. RT. 619 - SECTION 120 BR
 PUTNAM COUNTY
 STATION 12+530
 STRUCTURE No. 078-2007

DESIGNED BY: **MV** DRAWN BY: **KDS**
 CHECKED BY: **SG** CHECKED BY: **MV**

DATE: 09/21/09

TransSystems

800 WEATHER DRUM SUITE 200
 SCHWARTZBURG, IL 60197-5000
 TEL 847 506-9600
 FAX 847 506-9601

FILE: g:\40\2000\0003902\cad\suiv_078_2007_0782007.dwg