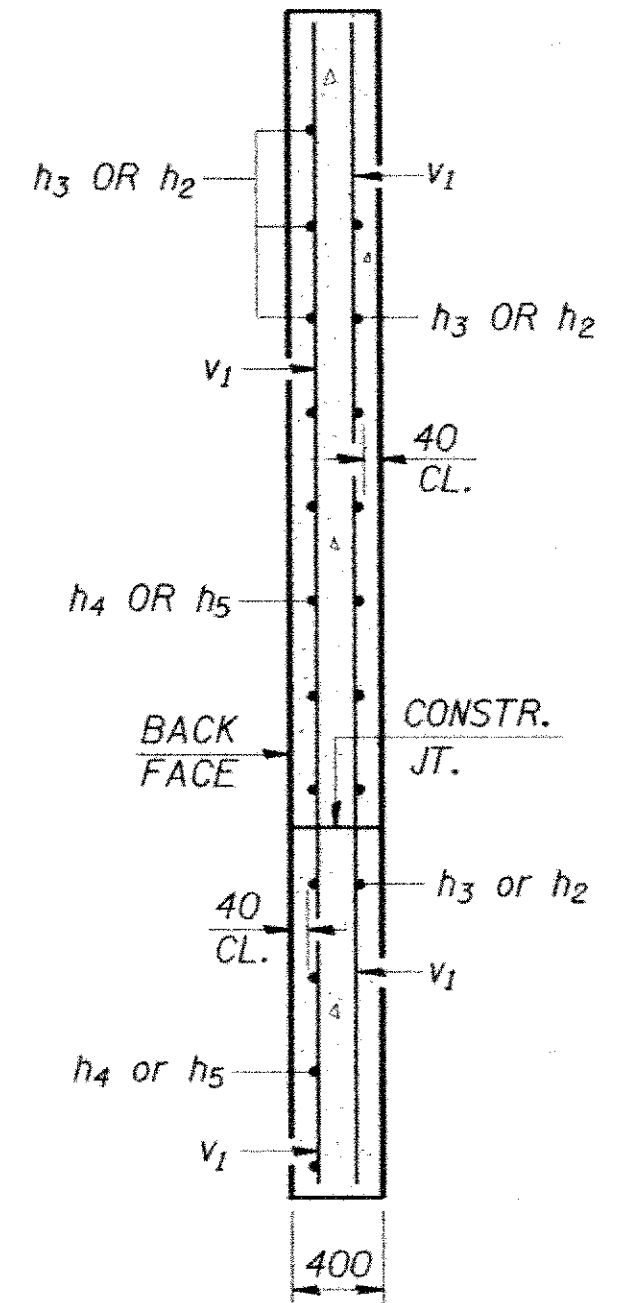
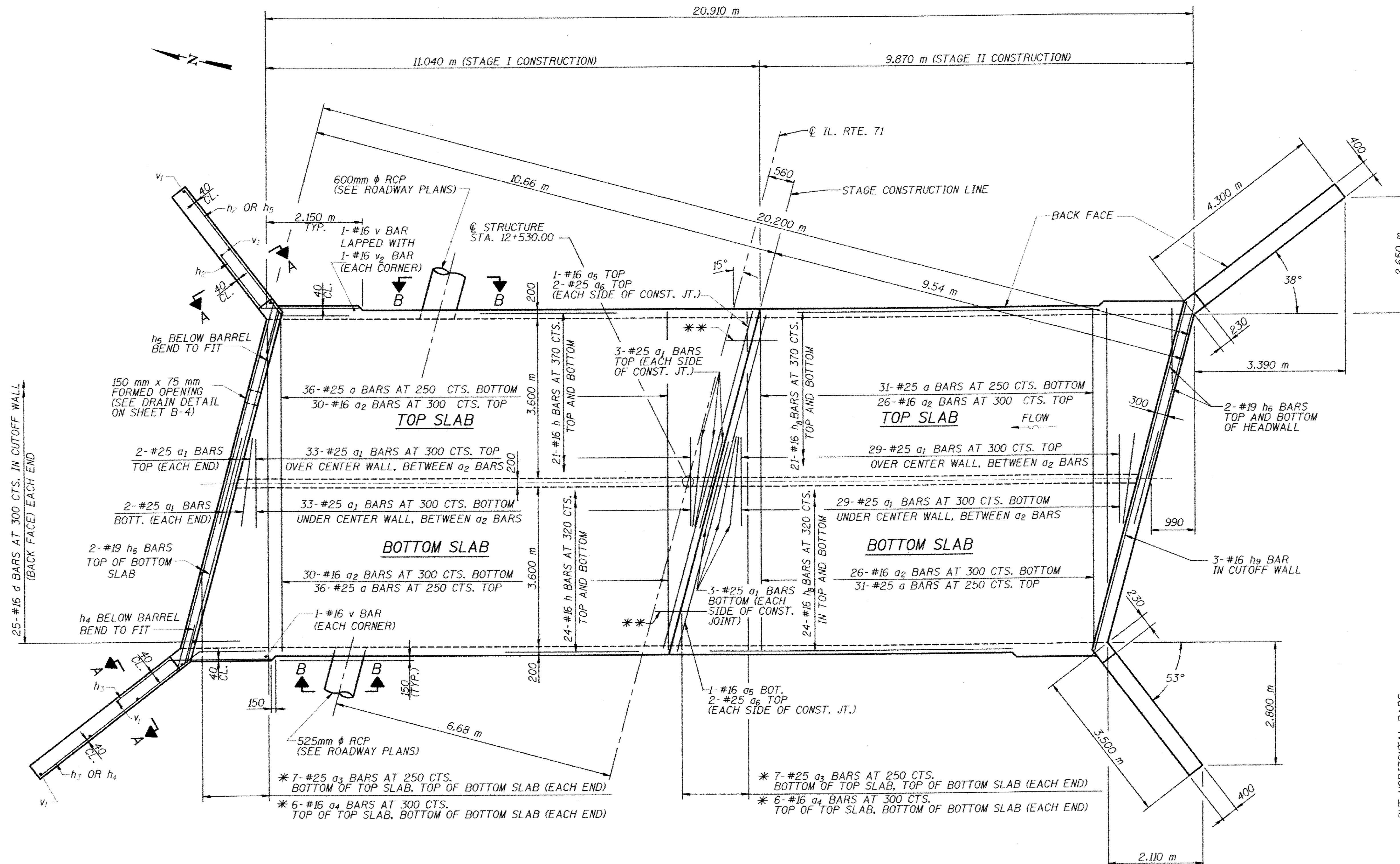


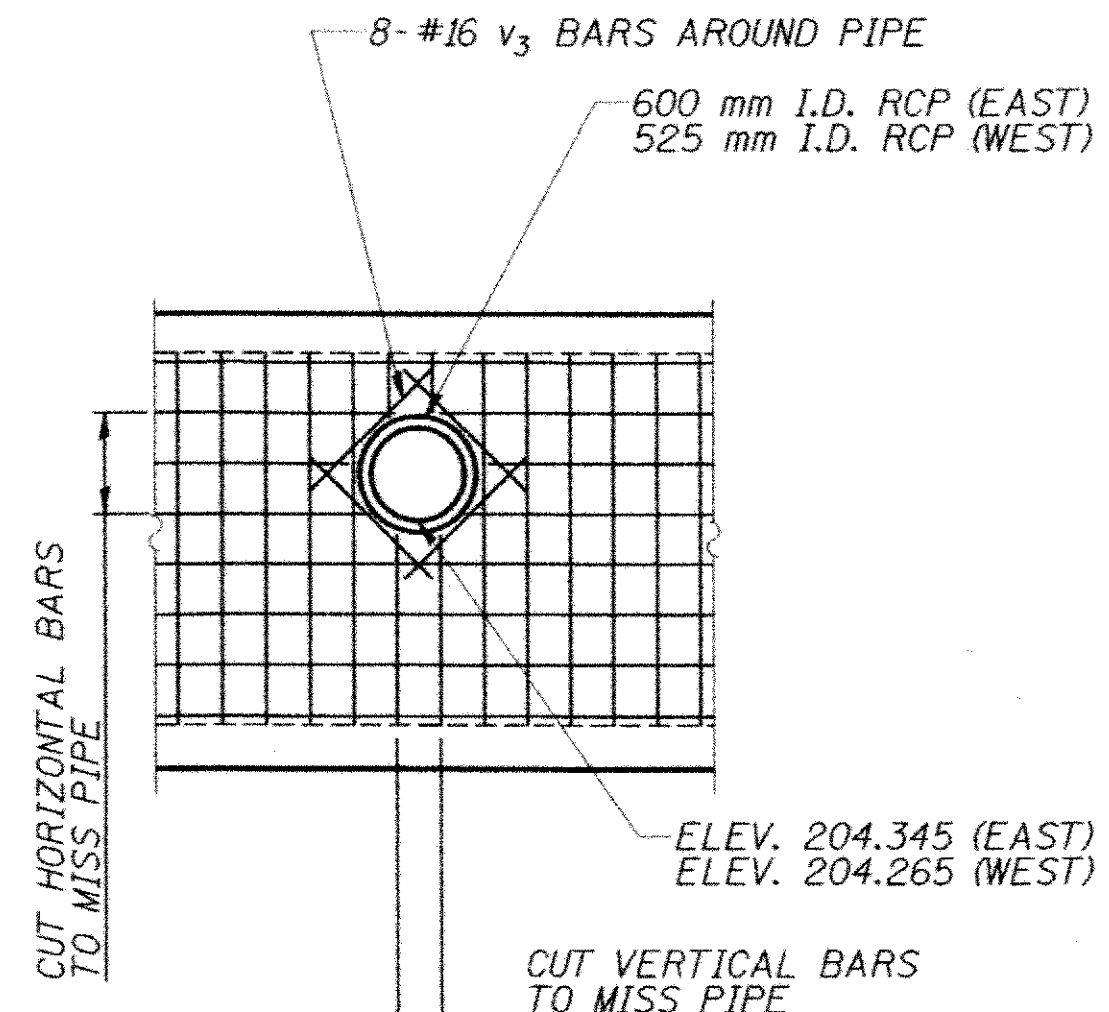
RTE.	SECTION	COUNTY	TOTAL SHEETS	SHEET NO
619	.	PUTNAM	77	44

FED. ROAD DIST. NO. ILLINOIS FED. AID PROJECT-  
 \* 120 BR, CR

CONTRACT NO. 08740



SECTION A-A



SECTION B-B

\* CUT  $a_3$  AND  $a_4$  BARS TO FIT SKEW AT BOTTOM SLAB.  
 USE BALANCE OF BAR IN TOP SLAB, PLACE HOOKED END ALONG OUTSIDE SLAB EDGE, CUT END NEAR HEADWALL.  
 \*\* 42-BAR SPLICERS FOR #16 h AND  $h_8$  BARS TOP AND BOTTOM OF TOP SLAB (STAGE I)  
 48-BAR SPLICERS FOR #16 h AND  $h_8$  BARS TOP AND BOTTOM OF BOTTOM SLAB (STAGE I)

PLAN

REVISIONS	
NAME	DATE

ILLINOIS DEPARTMENT OF TRANSPORTATION  
**CULVERT PLAN**  
 ILLINOIS ROUTE 71 OVER DRAINAGE DITCH  
 F.A.P. RT. 619 - SECTION 120 BR  
 PUTNAM COUNTY  
 STATION 12+530  
 STRUCTURE No. 078-2007

DATE: 09/21/09 DESIGNED BY: MV DRAWN BY: KDS  
 CHECKED BY: SG CHECKED BY: MV

TranSystems

FILE: g:\401\2000\0003902\cad\culv\_078\_2007\0782007.dwg