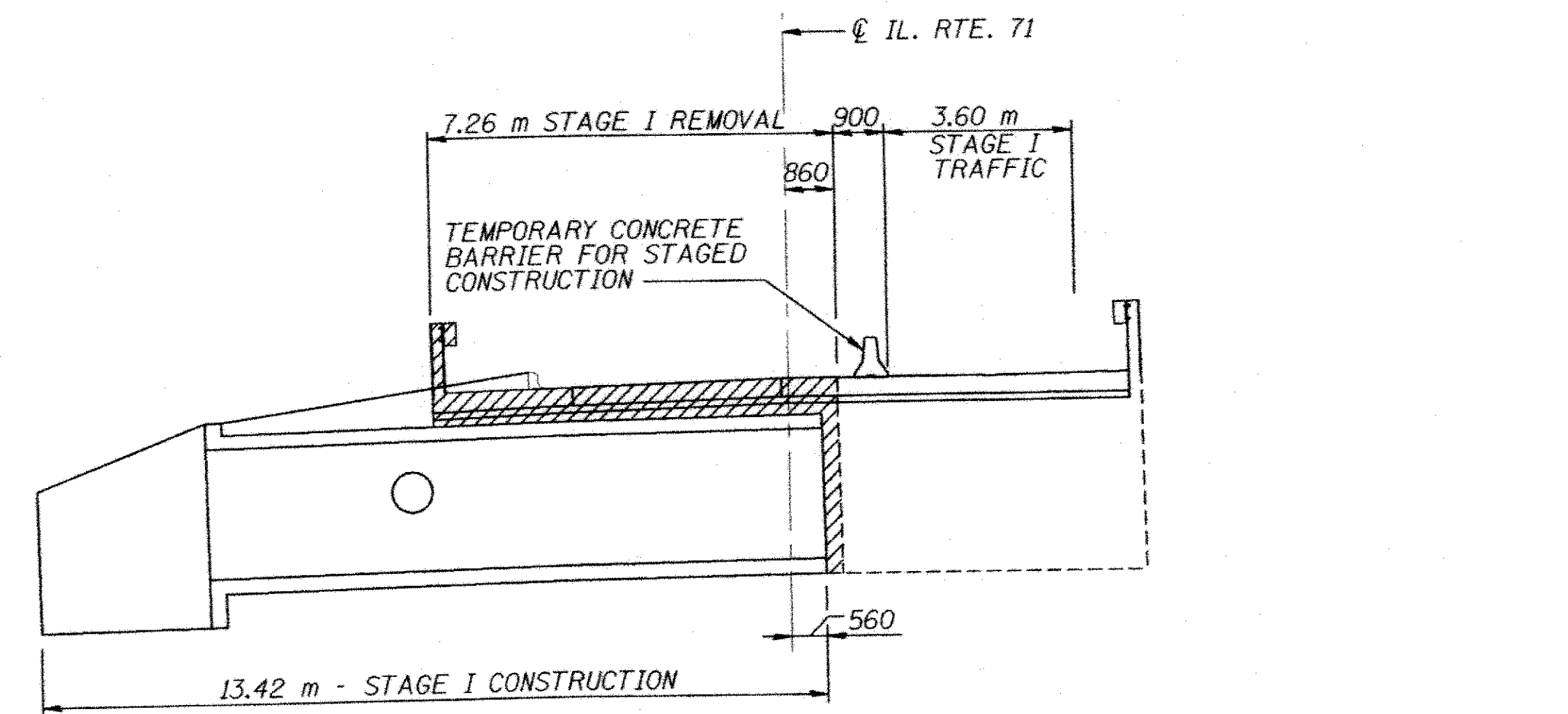


RTE.	SECTION	COUNTY	TOTAL SHEETS	SHEET NO
619	*	PUTNAM	77	43

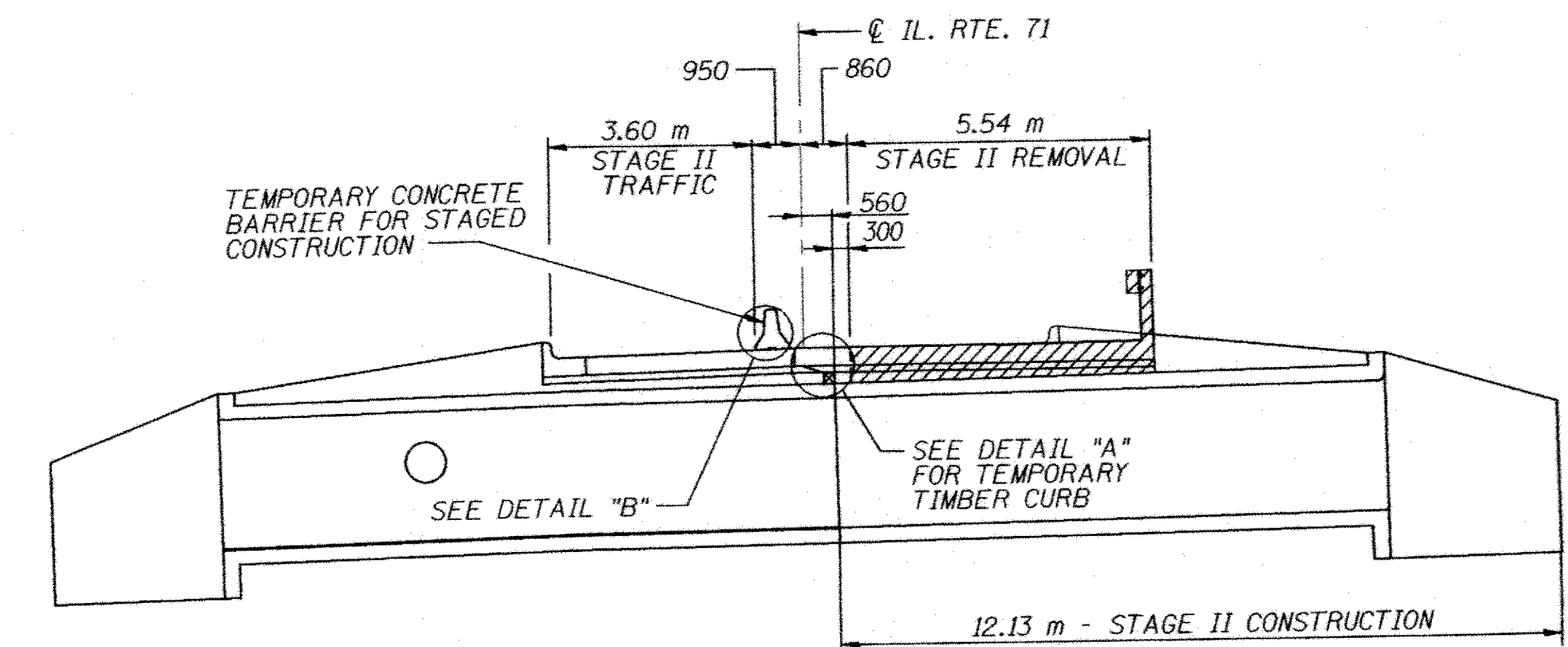
FED. ROAD DIST. NO. ILLINOIS FED. AID PROJECT-
 * 120 BR, CR

CONTRACT NO. 68740

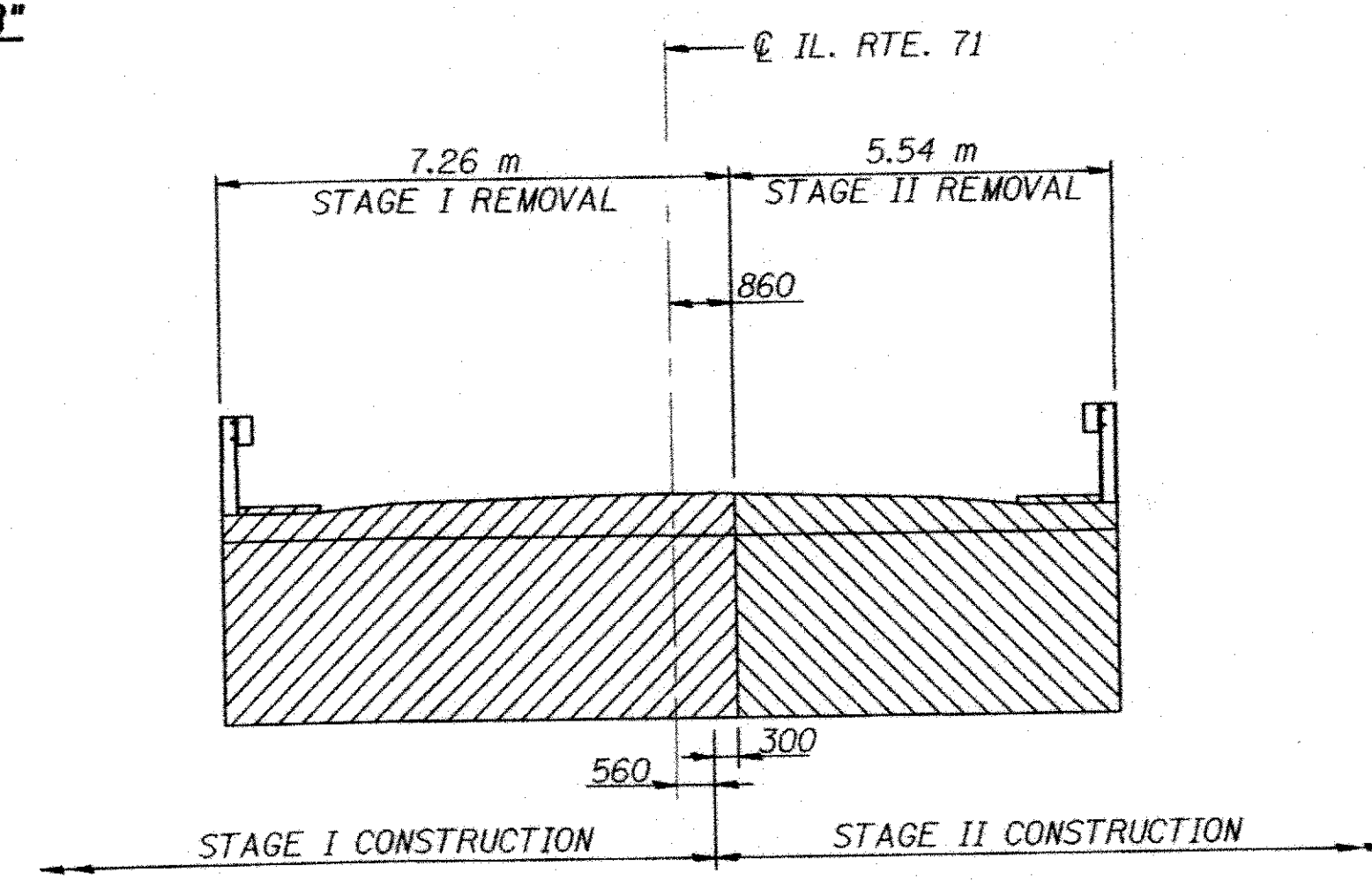
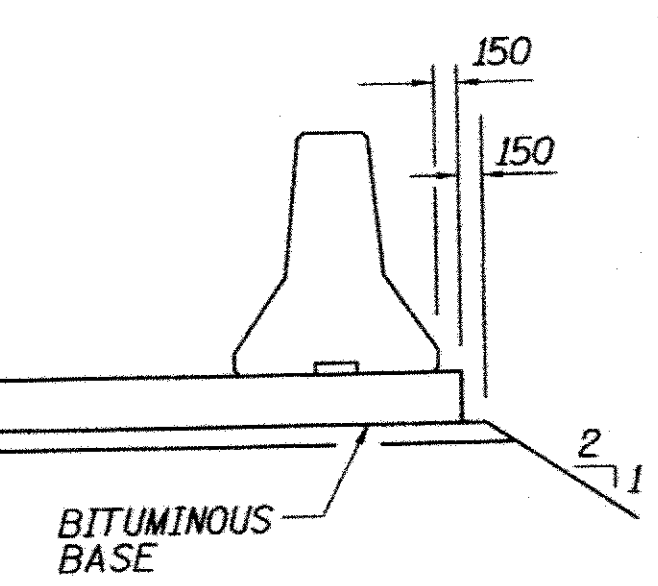
- NOTES:
 1. THE CONTRACTOR SHALL ANCHOR THE SHEET PILING TO THE EXISTING ABUTMENT WALL. THE CONNECTION SHALL BE APPROVED BY THE ENGINEER.
 2. SHEET PILING WITHIN THE LIMITS OF THE EXISTING FOOTING SHALL BE DRIVEN TO THE TOP OF THE FOOTING.



STAGE I
 LOOKING EAST
 DIMENSIONS ARE AT RIGHT
 ANGLE TO CL. ROUTE 71

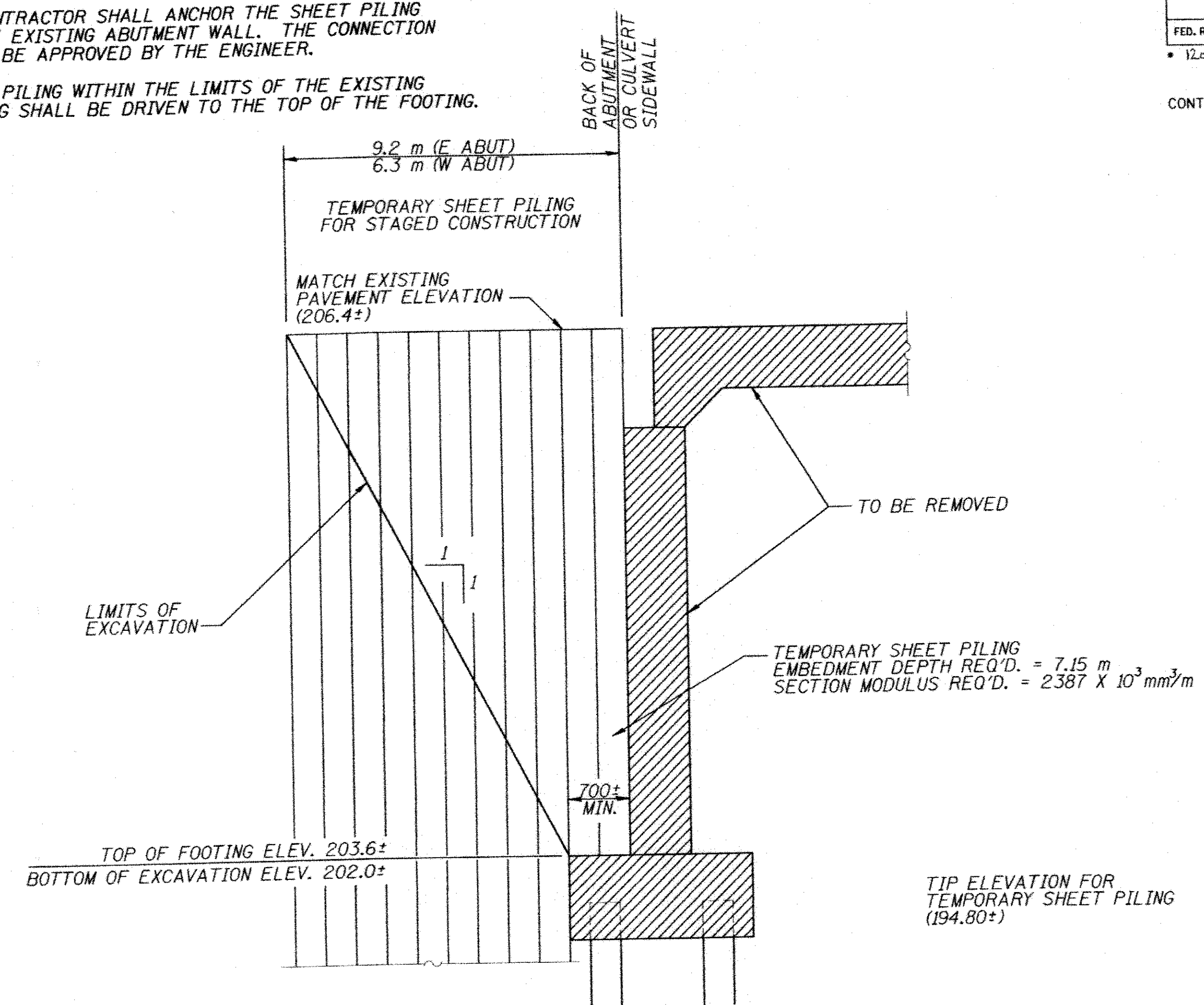


STAGE II
 LOOKING EAST
 DIMENSIONS ARE AT RIGHT
 ANGLE TO CL. ROUTE 71



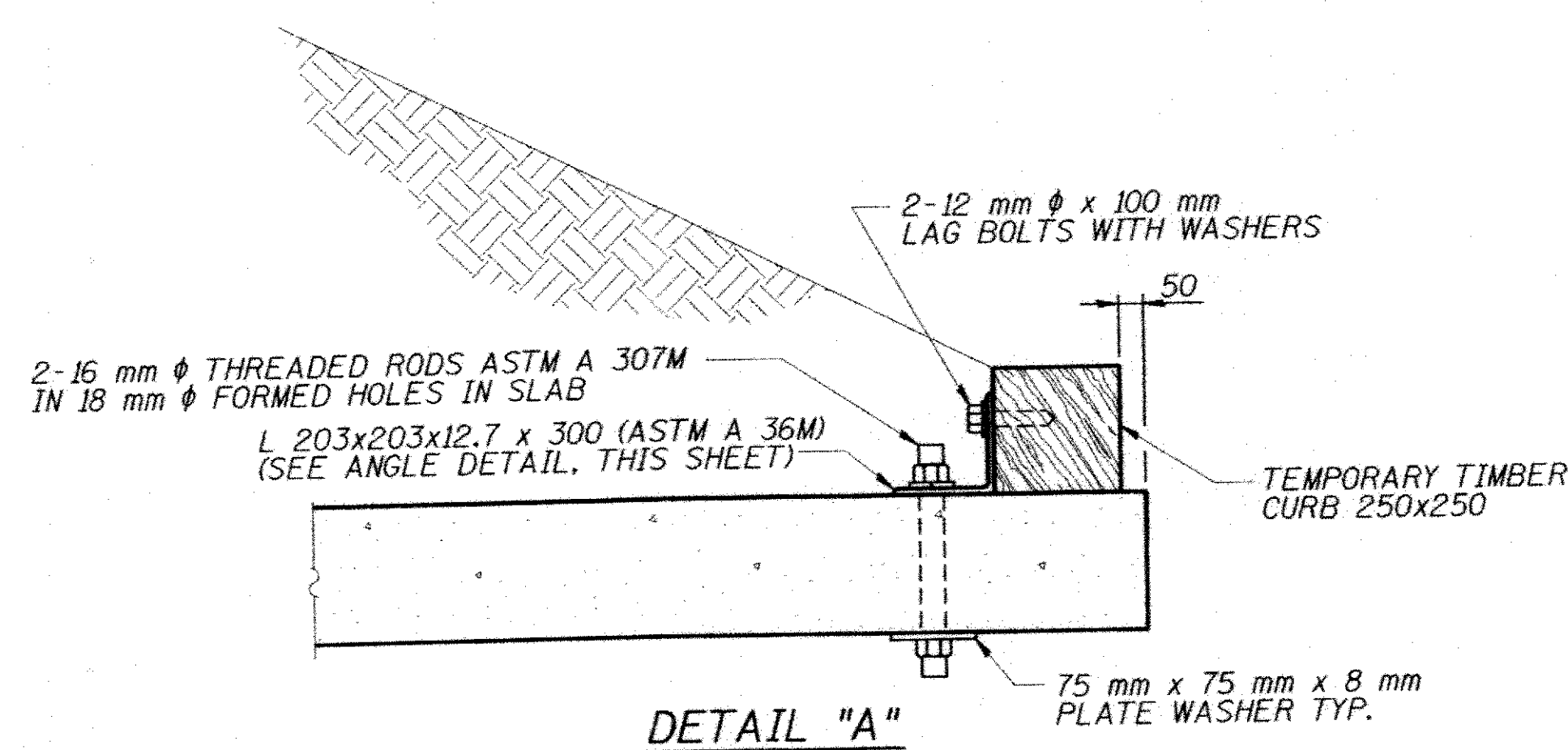
REMOVAL DETAIL
 LOOKING EAST

- NOTES:
 1. HATCHED AREAS INDICATE REMOVAL OF EXISTING STRUCTURES.
 2. FOR TEMPORARY CONCRETE BARRIER DETAILS SEE SHEET B-6 OF B-8. FOR QUANTITY SEE ROADWAY PLANS.



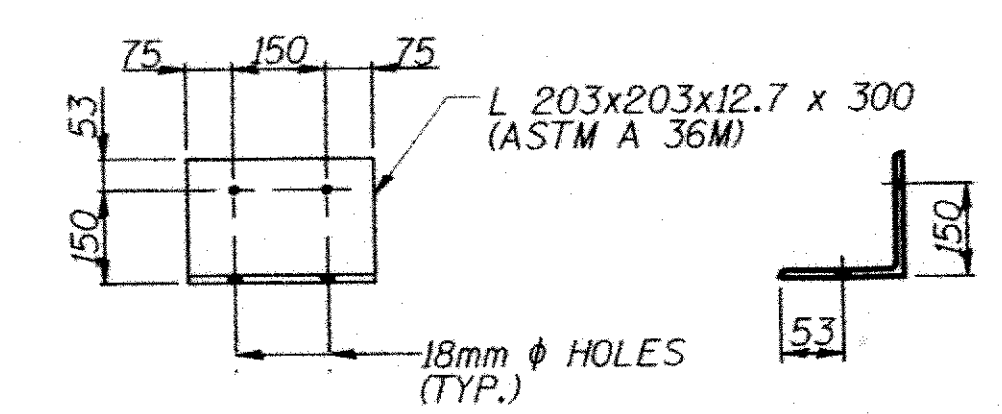
TEMPORARY SHEET PILING DETAIL

IF THE CONTRACTOR CHOOSES TO ALTER THE TEMPORARY CANTILEVERED SHEET PILING DESIGN REQUIREMENTS SHOWN ON THE PLANS FOR LESSER DESIGN REQUIREMENTS, THEN FULL DESIGN SUBMITTALS WITH THE REQUIRED SEALS WILL BE EXPECTED BY THE DEPARTMENT, FOR REVIEW AND APPROVAL.



DETAIL "A" NOTES

CONNECT ONE (1) L 203x203x12.7 x 300 TO THE TOP OF STAGE I CULVERT WITH TWO (2) THREADED RODS WITH NUTS AND WASHERS PLACED IN FORMED HOLES. ANGLES TO BE POSITIONED NEAR EACH END OF ALL TIMBER CURBS, BUT THE OUTSIDE LAG BOLT SHALL BE AT LEAST 150mm FROM END OF TIMBER. COST INCLUDED WITH CONCRETE BOX CULVERTS.



ANGLE DETAIL

REVISIONS	
NAME	DATE

ILLINOIS DEPARTMENT OF TRANSPORTATION
CONSTRUCTION STAGING
 ILLINOIS ROUTE 71 OVER DRAINAGE DITCH
 F.A.P. RT. 619 - SECTION 120 BR
 PUTNAM COUNTY
 STATION 12+530
 STRUCTURE No. 078-2007

DESIGNED BY: MV DRAWN BY: KDS
 DATE: 09/21/09 CHECKED BY: SC

TRANS SYSTEMS

FILE: g:\401\2000\0003902\lead\cuv-078-2007\0782007.cs.bht