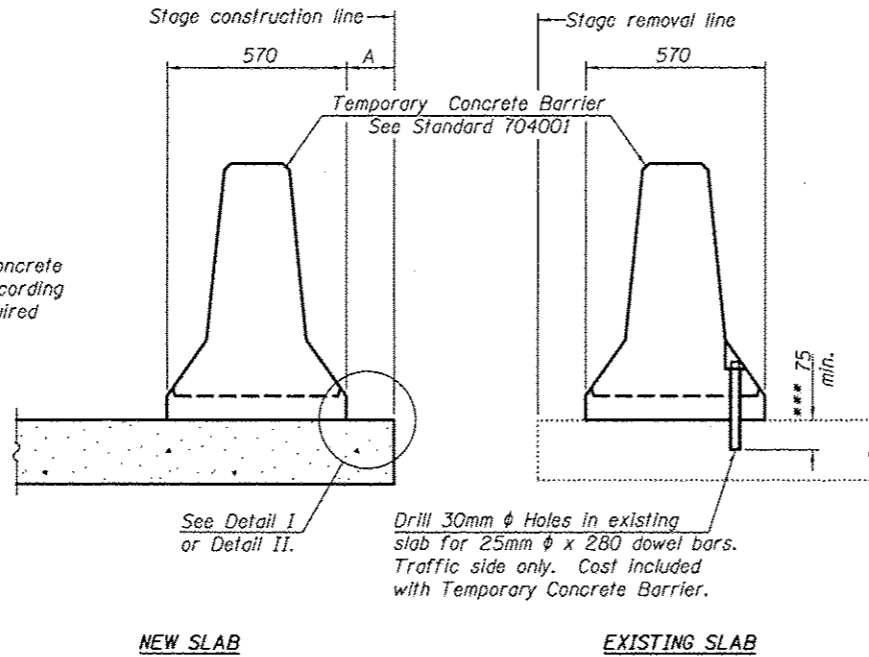


When "A" is 1.067m or less, the temporary concrete barrier shall be anchored to the new slab according to Detail I or Detail II. No anchorage is required when "A" is greater than 1.067m.



SECTIONS THRU SLAB OR DECK BEAM

NOTES

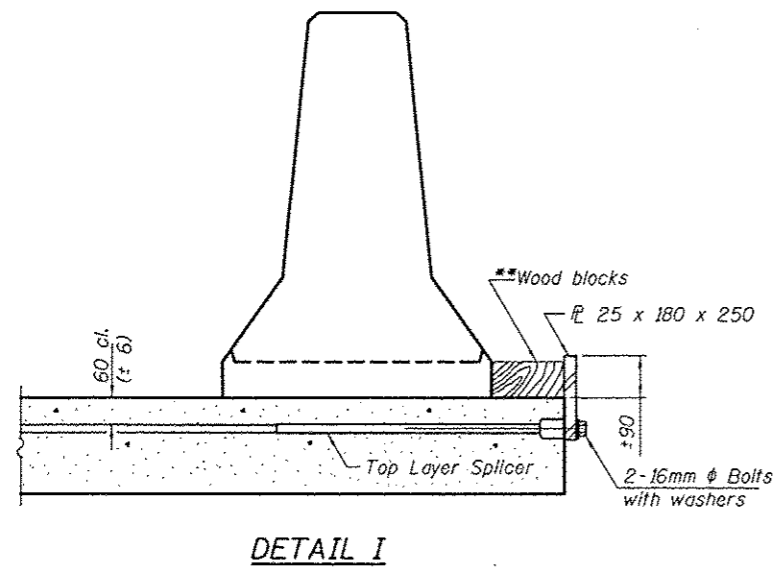
Detail I - With Bar Splicer or Couplers:
Connect one (1) 25 x 180 x 250 steel \bar{L} to the top layer of couplers with 2-16mm ϕ bolts screwed to coupler at approximate \bar{C} of each barrier panel.

Detail II - With Extended Reinforcement Bars:
Connect one (1) 25 x 180 x 250 steel \bar{L} to the concrete slab or concrete wearing surface with 2-16mm ϕ Expansion Anchors or cast in place inserts spaced between the top layer of reinforcement at approximate \bar{C} of each barrier panel.

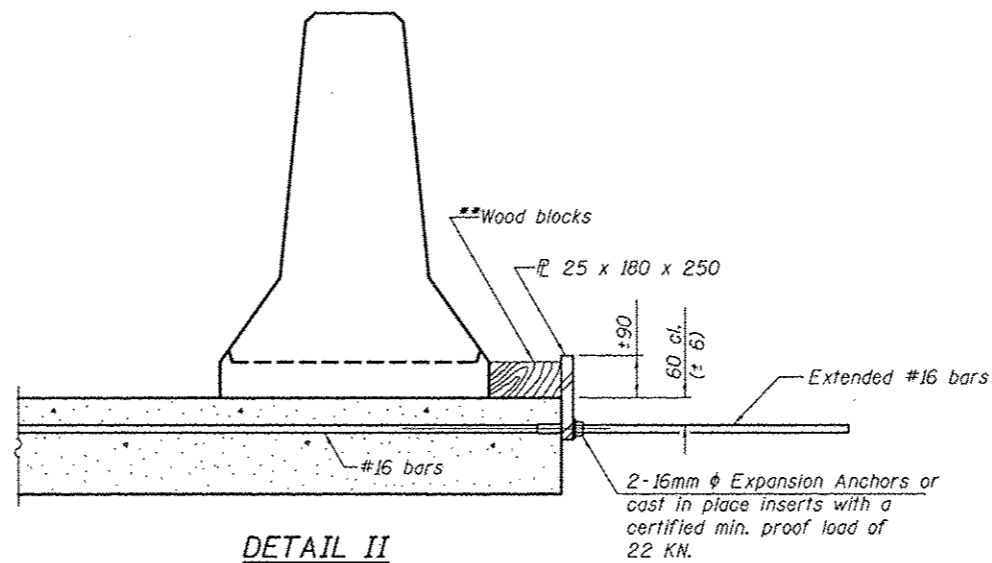
Cost of anchorage is included with Temporary Concrete Barrier. The 25 x 180 x 250 plate shall not be removed until stage II construction forms and all reinforcement bars are in place and the concrete is ready to be placed.

All dimensions are in millimeters (mm) except as noted.

*** Dimension shown is minimum required embedment into concrete. If hot-mix asphalt wearing surface is present, minimum embedment shall be in addition to wearing surface depth.



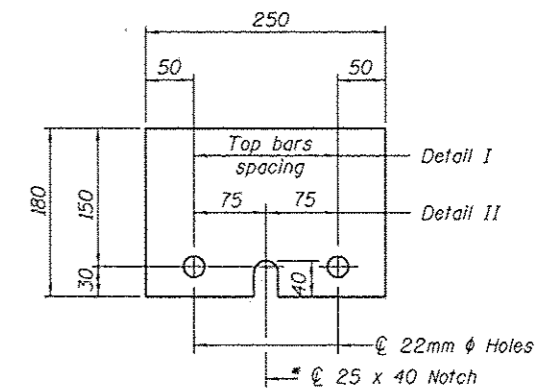
DETAIL I



DETAIL II

** Wood blocks may be omitted when required to provide minimum stage traffic lane width. When the wood blocks are omitted, the concrete barrier shall be in direct contact with the steel retainer plate.

"W" = Top bars spacing + 4"



STEEL RETAINER \bar{L} 25 x 180 x 250

* Required only with Detail II

DESIGNED - VHV	EXAMINED - <i>Timothy A. Ault</i>
CHECKED - DAB	ACTING ENGINEER OF STRUCTURAL SERVICES
DRAWN - baliva	PASSED - <i>Carl Perry</i>
CHECKED - VHV	ACTING ENGINEER OF BRIDGES AND STRUCTURES

DATE - APRIL 25, 2013

STATE OF ILLINOIS
DEPARTMENT OF TRANSPORTATION

TEMPORARY CONCRETE BARRIER FOR STAGE CONSTRUCTION
SN 078-0030
SHEET NO. 2 OF 2 SHEETS

F.A.P. RTE.	SECTION	COUNTY	TOTAL SHEETS	SHEET NO.
619	120 BR,CR	PUTNAM	77	41
CONTRACT NO. 68740			ILLINOIS FED. AID PROJECT	