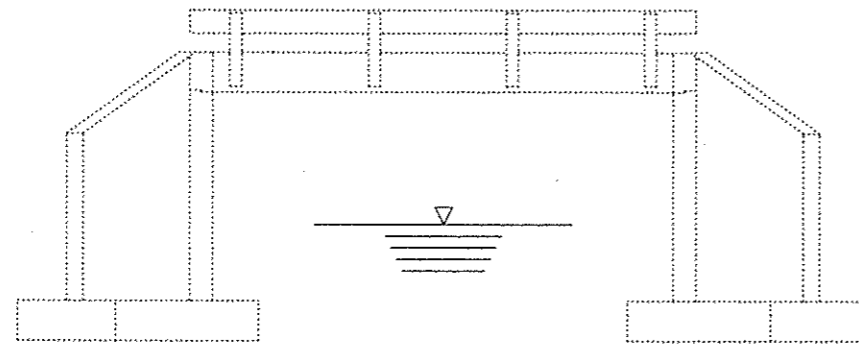
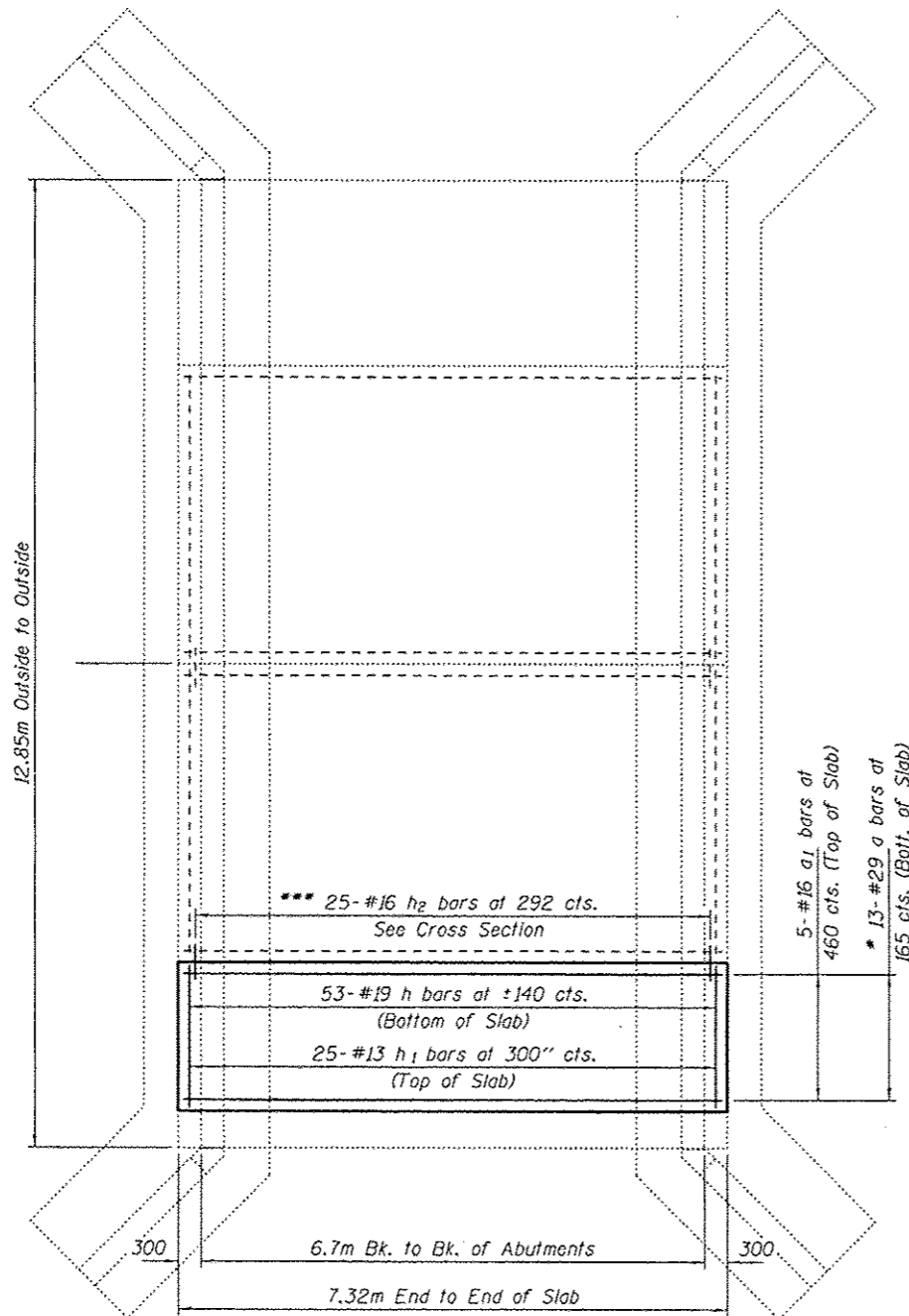
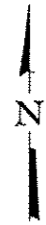


**GENERAL NOTES**

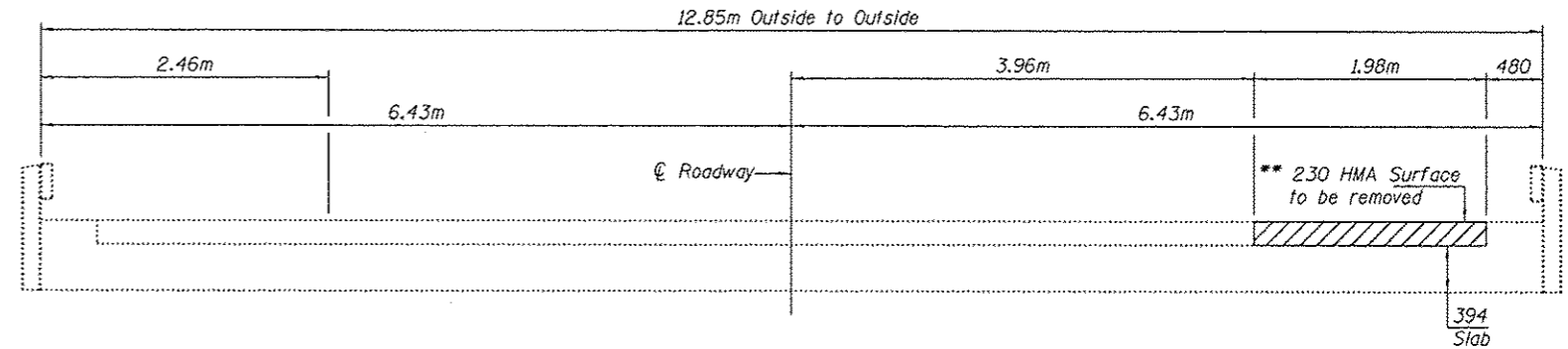
Plan dimensions and details relative to existing plans are subject to nominal construction variations. The Contractor shall field verify existing dimensions and details affecting new construction and make necessary approved adjustments prior to construction or ordering of materials. Such variations shall not be cause for additional compensation for a change in scope of the work, however, the Contractor will be paid for the quantity actually furnished at the unit price bid for the work. The deck surface shall have its final finish tined according to Article 420.09(e)(1) of the Standard Specifications. Cost included with Concrete Superstructures. All dimensions are in millimeters (mm) except as noted.



**ELEVATION**

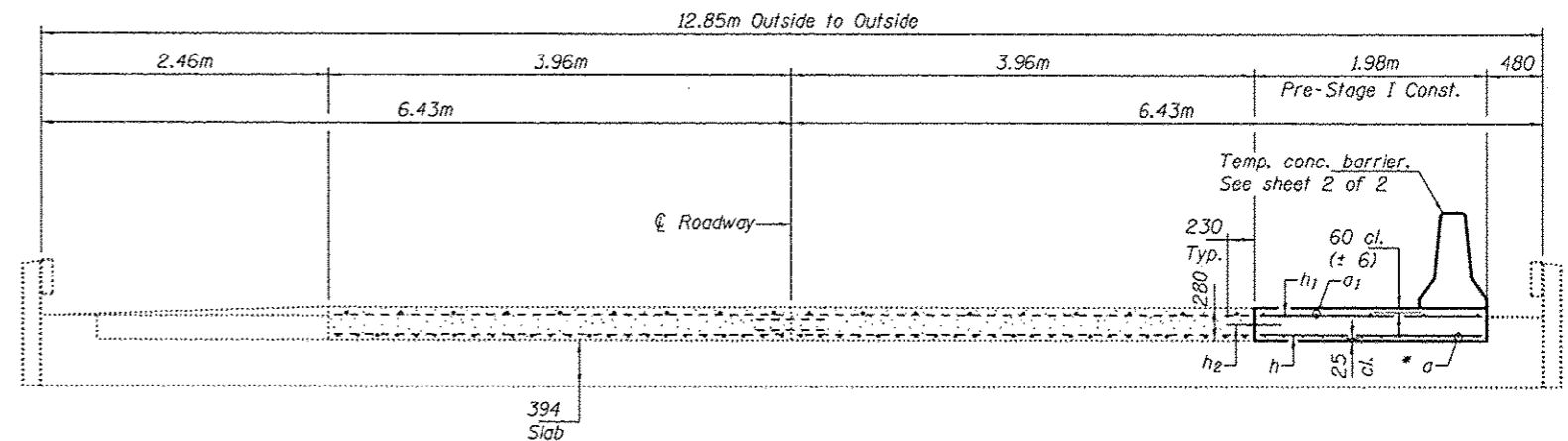


**PLAN**



**EXISTING CROSS-SECTION**

(Looking East)



**PROPOSED CROSS-SECTION**

(Looking East)

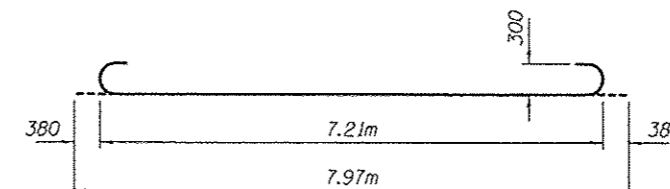
- \* Tilt #29  $a$  bars as required to maintain clearance.
- \*\* Contractor must not remove any material beyond this limit.
- \*\*\* Epoxy grout  $h_2$  bars in 230 min. holes according to Article 584 of the Standard Specifications.

**DESIGN STRESSES**

**FIELD UNITS**  
 $f'_c = 24 \text{ MPa}$   
 $f_y = 420 \text{ MPa (Reinf.)}$

**BILL OF MATERIAL**

Bar	No.	Size	Length	Shape
$a$	13	#29	7.97m	
$a_1$	5	#16	7.21m	
$h$	53	#19	1.88m	
$h_1$	25	#13	1.88m	
$h_2$	25	#16	460	
HMA Surface Removal, Special			m <sup>2</sup>	14.1
Concrete Superstructure			m <sup>3</sup>	4.1
Reinforcement Bars			kg	870



**BAR a**



Expires: November 30, 2014

DESIGNED - <i>Victor Puzey</i>	EXAMINED - <i>Timothy A. Dook</i>	DATE - APRIL 25, 2013
CHECKED - <i>John Puzey</i>	PASSED - <i>Timothy A. Dook</i>	
DRAWN - <i>Baliga</i>		
CHECKED - <i>SK</i>		

STATE OF ILLINOIS  
DEPARTMENT OF TRANSPORTATION

GENERAL PLAN AND ELEVATION & REPAIR DETAILS  
SN 078-0030

SHEET NO. 1 OF 2 SHEETS

F.A.P. RTE.	SECTION	COUNTY	TOTAL SHEETS	SHEET NO.
619	120 BR.CR	PUTNAM	77	40
				CONTRACT NO. 68740
ILLINOIS FED. AID PROJECT				