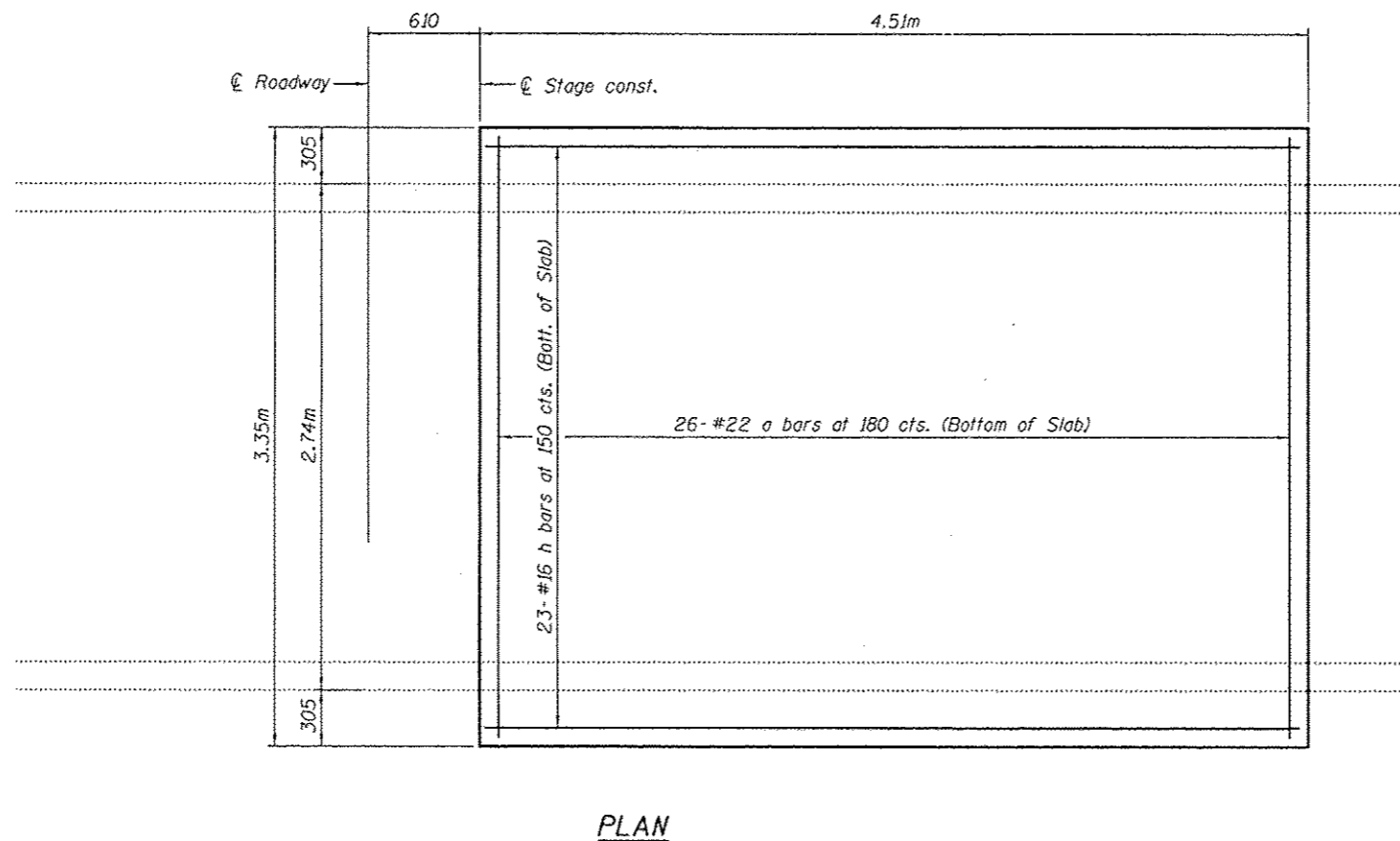


* Remove 200 of existing HMA overlay and replace with 200 concrete slab as shown. Removal to be limited to the 200 shown. Slope to match roadway. Cost of removal included with Hot-Mix Asphalt Surface Removal, Special.



GENERAL NOTES

Plan dimensions and details relative to existing plans are subject to nominal construction variations. The Contractor shall field verify existing dimensions and details affecting new construction and make necessary approved adjustments prior to construction or ordering of materials. Such variations shall not be cause for additional compensation for a change in scope of the work, however, the Contractor will be paid for the quantity actually furnished at the unit price bid for the work.

The slab surface shall have its final finish tined according to Article 420.09(e)(1) of the Standard Specifications. Cost included with Concrete Superstructure.

All dimensions are in millimeters (mm) except as noted.

DESIGN STRESSES

FIELD UNITS
 $f'_c = 24 \text{ MPa}$
 $f_y = 420 \text{ MPa (Reinf.)}$

BILL OF MATERIAL

Bar	No.	Size	Length	Shape
a	26	#22	3.75m	⌋
h	23	#16	4.42m	—
HMA Surface Removal, Special			m ²	15.1
Reinforcement Bars			kg	450
Concrete Superstructure			m ³	3.0

