

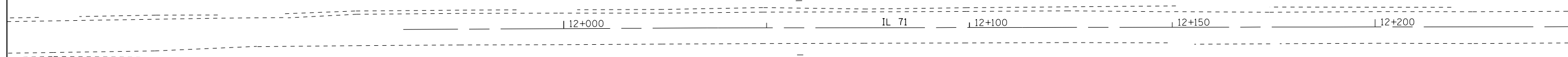
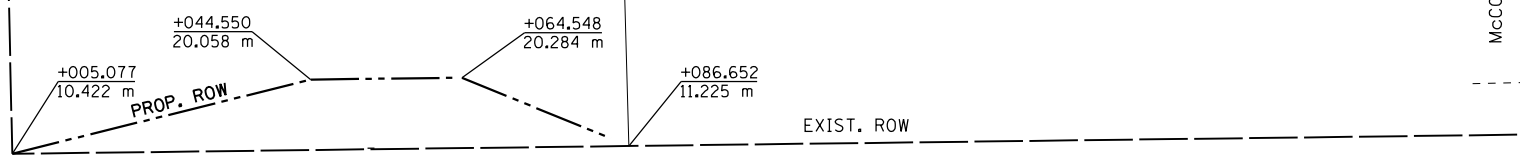
LEGEND	
	EXIST. ROW
	PROP. T.E.
	PROP. ROW



CONTRACT #68740

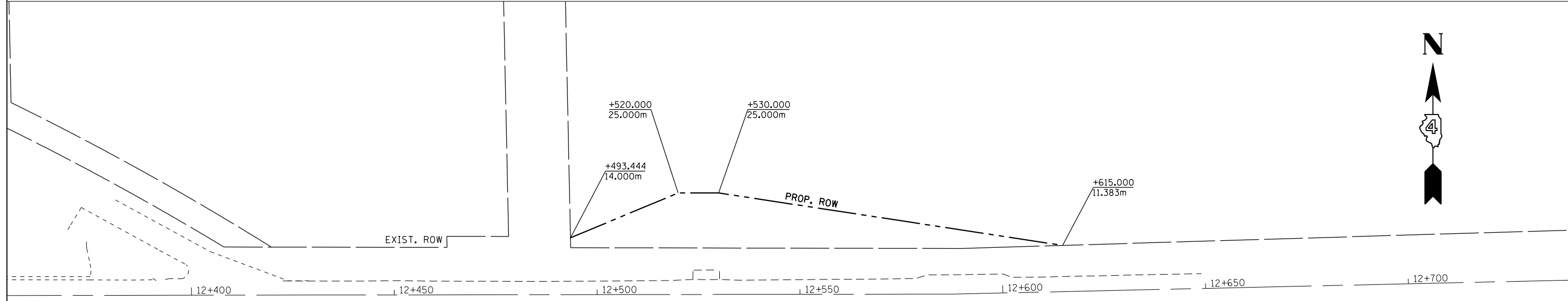
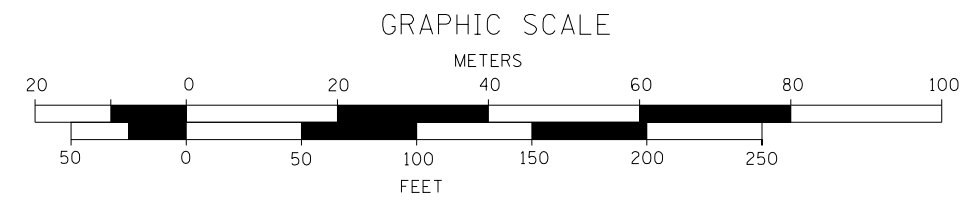
F.A.P. RTE.	SECTION	COUNTY	TOTAL SHEETS	SHEET NO.
619	120BR.CR	PUTNAM	77	37
STA.		TO STA.		
FED. ROAD DIST. NO.		ILLINOIS	FED. AID PROJECT	

McCOY ST.



NOTE:

THE STATIONS AND OFFSETS SHOWN IN THESE PLANS FOR THE PROPOSED RIGHT-OF-WAY AND TEMPORARY EASEMENTS BETWEEN IL 71 STA. 12+000 AND 12+100 ARE DIFFERENT THAN THOSE FOUND ON FINAL PLATS DUE TO A DIFFERENT IL ROUTE 71 CENTERLINE BEING USED IN THE PLANS THAN ON THE FINAL PLATS.



REVISIONS	
NAME	DATE

ILLINOIS DEPARTMENT OF TRANSPORTATION

R.O.W. PLANS

DATE _____ DRAWN BY _____ CHECKED BY _____