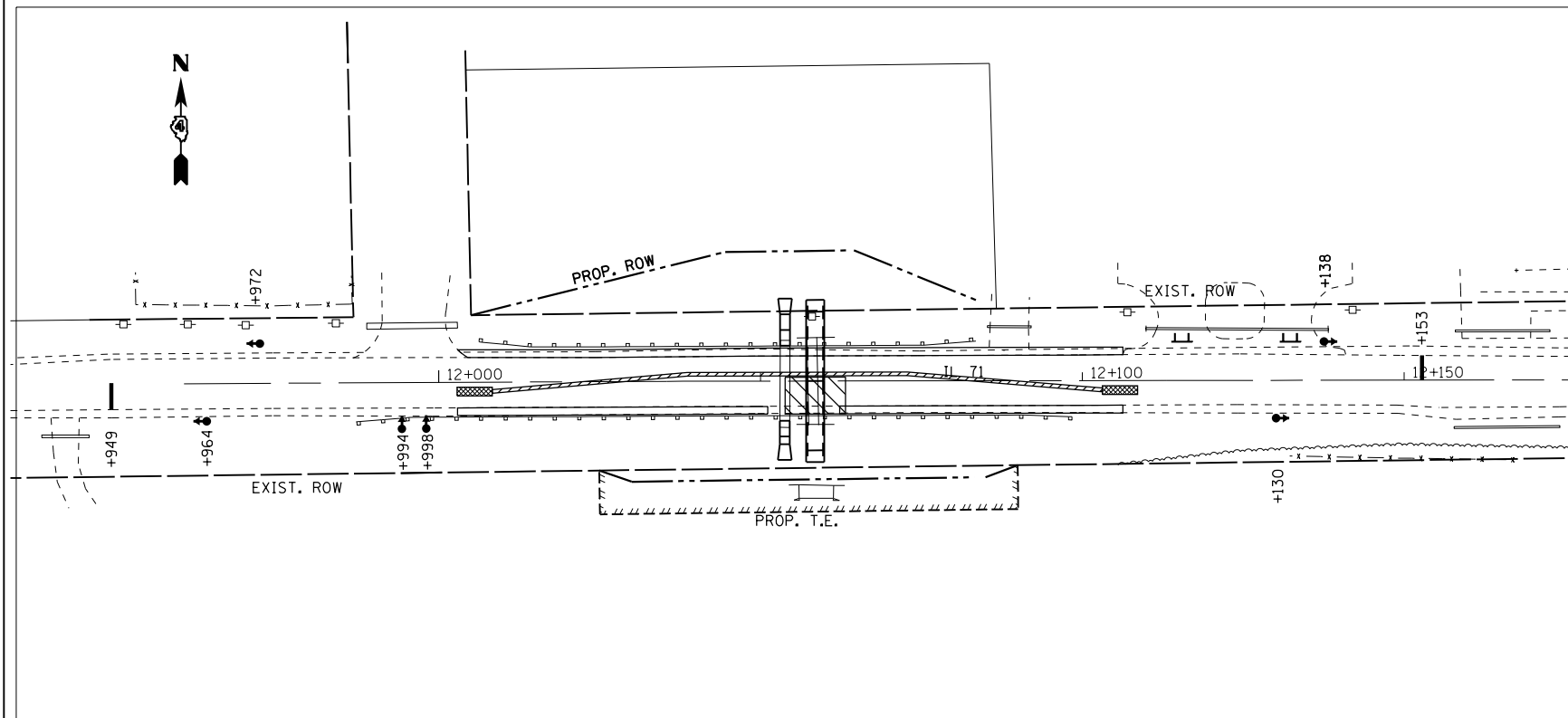
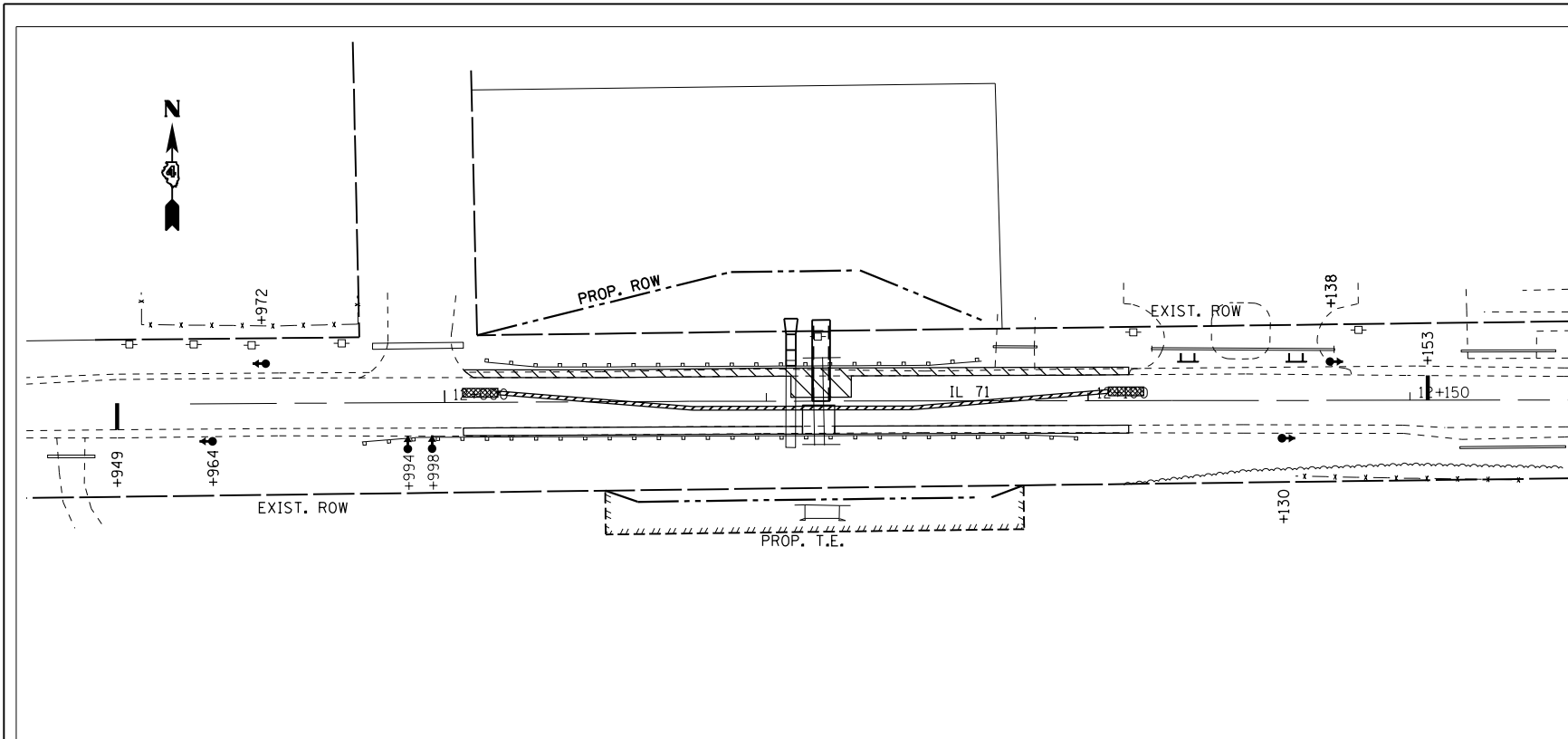
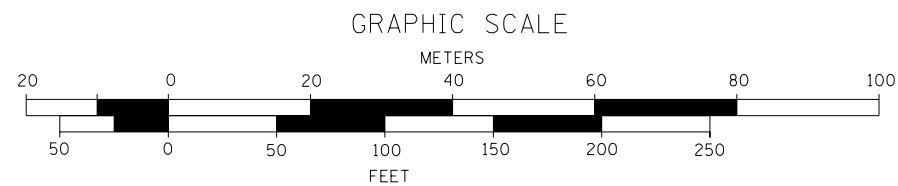


CONTRACT #68740

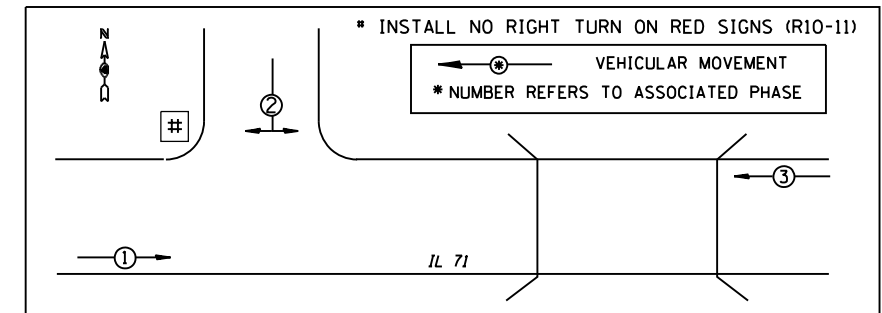
F.A.P. RTE.	SECTION	COUNTY	TOTAL SHEETS	SHEET NO.
619	120BR,CR	PUTNAM	77	33
STA.	TO STA.			
FED. ROAD DIST. NO.	ILLINOIS FED. AID PROJECT			



LEGEND	
	IMPACT ATTENUATOR
	TEMPORARY CONCRETE BARRIER
	WORK AREA
	STOP BAR
	TRAFFIC SIGNAL
	TYPE 3 BARRICADE



TEMPORARY PHASE DIAGRAM



1. TRAFFIC CONTROL SHALL BE IN ACCORDANCE WITH STANDARD 701321.
2. THREE PHASE SIGNAL OPERATION IS REQUIRED. THE ENGINEER OF TRAFFIC SHALL APPROVE ALL TIMING PARAMETERS. THE CONTRACTOR SHALL CONTACT PAUL GRANT, DISTRICT 4 TRAFFIC SIGNAL TECHNICIAN, AT (309) 671-4474, A MINIMUM OF FORTY-EIGHT HOURS PRIOR TO SIGNAL TURN ON.
3. THE CONTRACTOR MAY INSTALL A CONVENTIONAL TRAFFIC SIGNAL INSTALLATION OR UTILIZE SOLAR POWERED TRAILER MOUNTED TRAFFIC SIGNALS. DETECTION CAN BE EITHER MICROWAVE OR DETECTOR LOOPS.
4. ALL TRAFFIC SIGNAL SECTIONS SHALL HAVE 12" DIAMETER LED LENSES.
5. THE TEMPORARY TRAFFIC SIGNAL HEADS SHALL BE PLACED AT THE LOCATIONS INDICATED ON THE PLAN SHEETS OR DIRECTED BY THE ENGINEER.
6. THE CONTRACTOR SHALL FURNISH AND INSTALL A TEMPORARY ELECTRICAL SERVICE FOR THE TRAFFIC SIGNALS. THE CONTRACTOR SHALL PROVIDE ELECTRICAL CABLE, WOOD POLES, SERVICE DISCONNECT, AND ALL OTHER ITEMS REQUIRED FOR THE TEMPORARY SERVICE INSTALLATION. THE CONTRACTOR SHALL FIELD VERIFY THE DISTANCE FROM THE TEMPORARY TRAFFIC SIGNALS TO THE TEMPORARY ELECTRICAL SERVICE PRIOR TO BIDDING.
7. THE CONTRACTOR SHALL INSTALL "NO RIGHT TURN ON RED" AND "STOP HERE ON RED" SIGNS FOR ALL PRIVATE AND COMMERCIAL ENTRANCE
8. THE TEMPORARY TRAFFIC SIGNAL INSTALLATION SHALL CONFORM TO ALL MUTCD REQUIREMENTS.
9. ALL LABOR, MATERIALS, AND EQUIPMENT REQUIRED FOR THE TEMPORARY TRAFFIC SIGNAL INSTALLATION SHALL BE INCLUDED IN THE BID PRICE FOR THE PAY ITEM "TEMPORARY BRIDGE TRAFFIC SIGNALS". THERE WILL BE NO ADDITIONAL COMPENSATION.

ITEM DESCRIPTION	UNIT	QTY.
TEMPORARY BRIDGE TRAFFIC SIGNALS	EACH	1

REVISIONS	
NAME	DATE

ILLINOIS DEPARTMENT OF TRANSPORTATION

TEMPORARY BRIDGE TRAFFIC SIGNALS CULVERT 12+058.5

DATE _____ DRAWN BY ERH 3/27/13
CHECKED BY _____