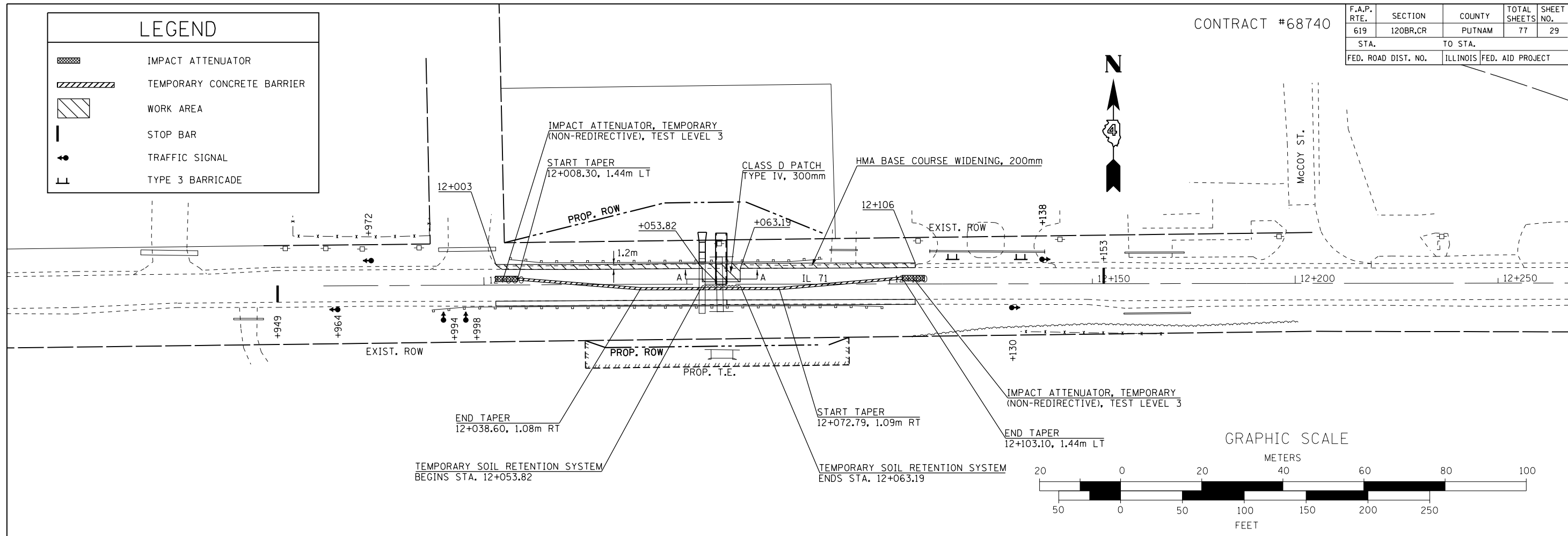


CONTRACT #68740

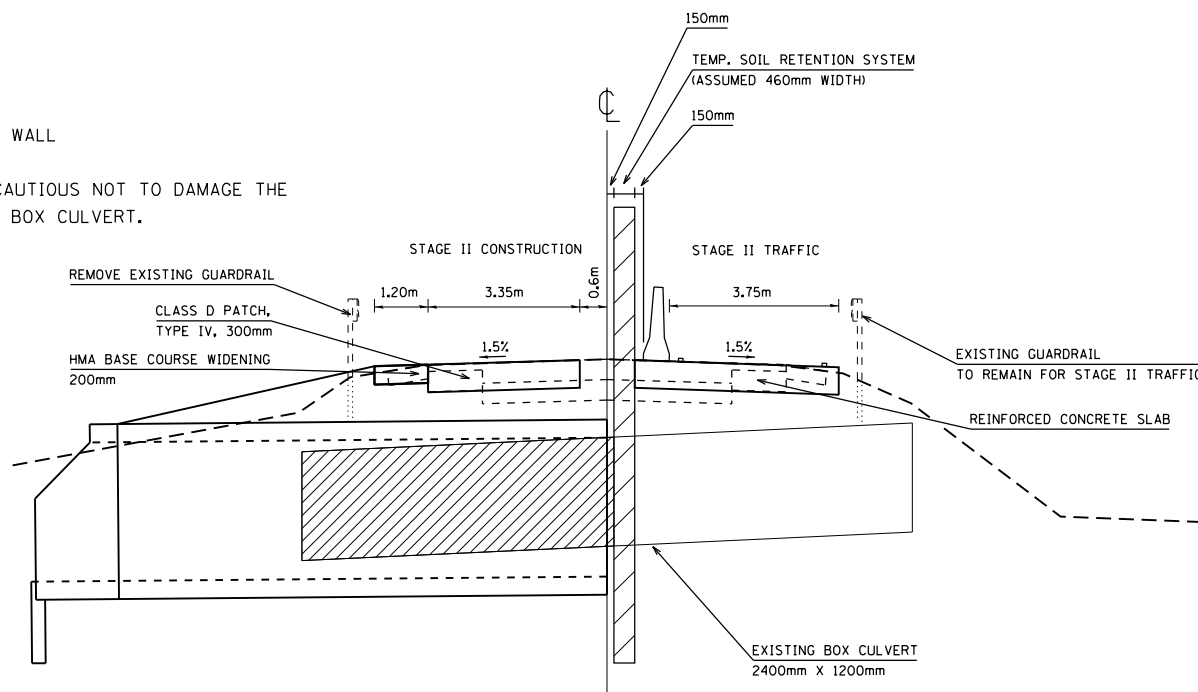
F.A.P. RTE.	SECTION	COUNTY	TOTAL SHEETS	SHEET NO.
619	120BR.CR	PUTNAM	77	29
STA.		TO STA.		
FED. ROAD DIST. NO.		ILLINOIS FED. AID PROJECT		

LEGEND	
	IMPACT ATTENUATOR
	TEMPORARY CONCRETE BARRIER
	WORK AREA
	STOP BAR
	TRAFFIC SIGNAL
	TYPE 3 BARRICADE

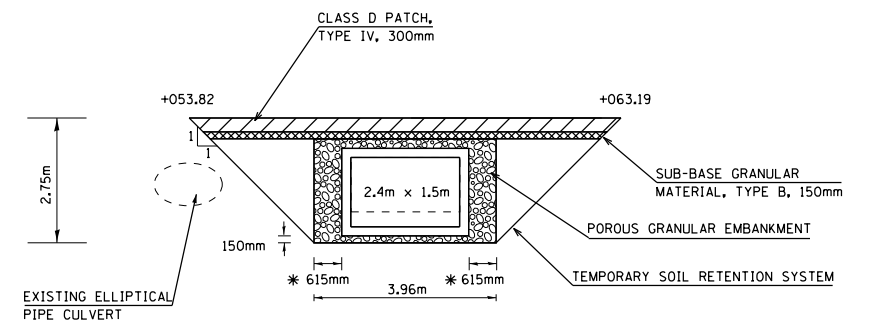


NOTES:

1. TRAFFIC CONTROL SHALL BE IN ACCORDANCE WITH TRAFFIC CONTROL & PROTECTION STANDARD 701321 AND THIS DETAIL.
2. OFFSETS TO BARRIER WALL ARE TO THE CENTER OF BARRIER WALL
3. WHEN INSTALLING TEMPORARY SOIL RETENTION SYSTEM, BE CAUTIOUS NOT TO DAMAGE THE EXISTING ELLIPTICAL PIPE CULVERT ADJACENT TO PROPOSED BOX CULVERT.



CROSS SECTION AT STA. 12+058.5
(LOOKING EAST)



SECTION A-A
(LOOKING NORTH) * POROUS GRANULAR EMBANKMENT PAID TO 2 FT. OUTSIDE THE BOX CULVERT

REVISIONS	
NAME	DATE

ILLINOIS DEPARTMENT OF TRANSPORTATION
CULVERT 12+058.5
STAGING DETAIL -
STAGE 2
 DRAWN BY JGJ 2/16/11
 CHECKED BY KJH 2/17/11
 DATE