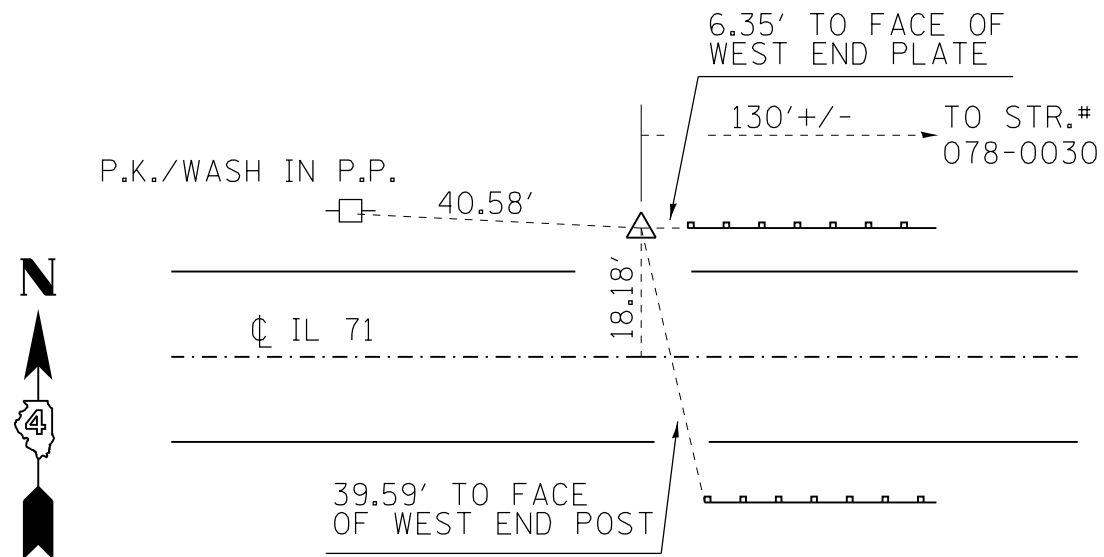


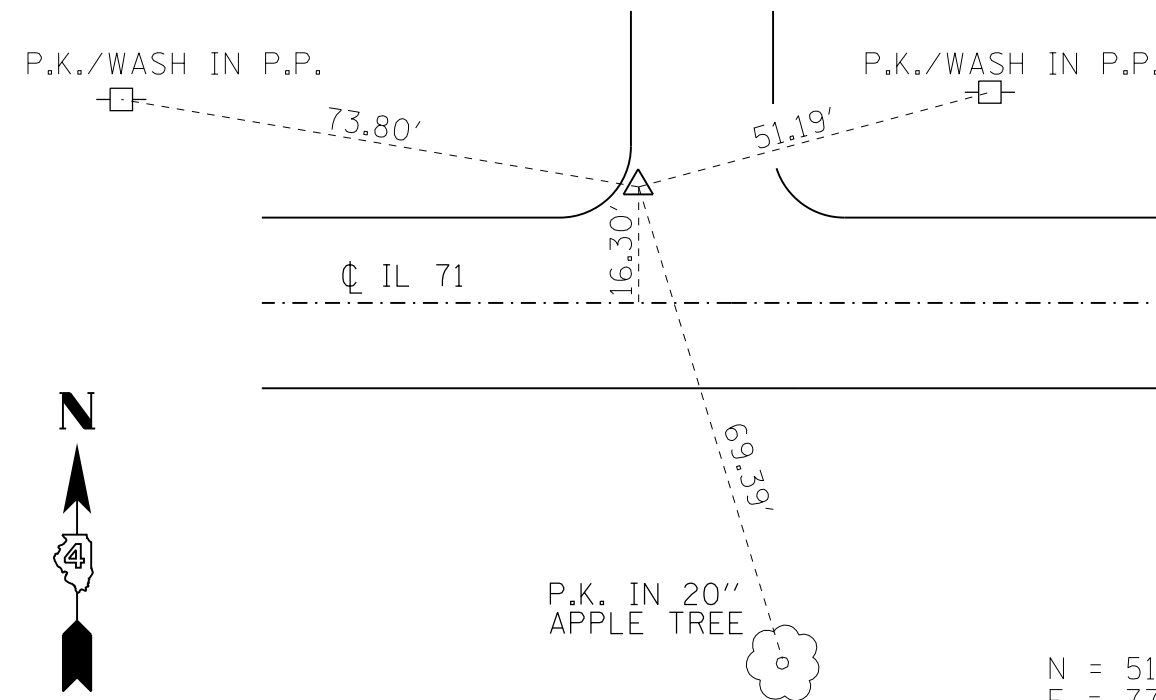
F.A.P. RTE.	SECTION	COUNTY	TOTAL SHEETS	SHEET NO.
619	120BR,CR	PUTNAM	77	22
STA.		TO STA.		
FED. ROAD DIST. NO.		ILLINOIS FED. AID PROJECT		

TIES FOR PT. #11-10" NAIL (APPROX. STA. 12+487)



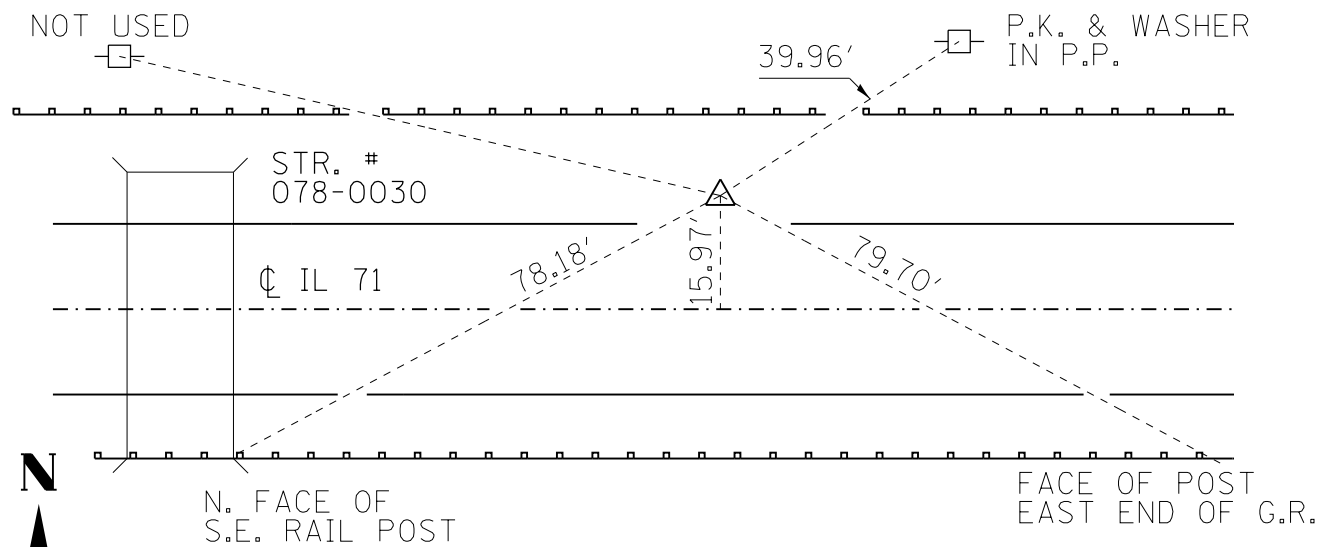
N = 510,058.0935  
E = 778,955.5705

TIES FOR PT. #23-P.K. & WASHER IN PAVEMENT (APPROX. STA. 12+583)



N = 510,058.2376  
E = 779,051.6861

TIES FOR PT. #10-10" NAIL (APPROX. STA. 12+551)



N = 510,057.8389  
E = 779,019.4244

TBM 12

RR SPIKE IN POWER POLE  
N. SIDE IL. ROUTE 71  
STA. 12+475 +/-  
ELEV. 206.684

REVISIONS	
NAME	DATE

ILLINOIS DEPARTMENT OF TRANSPORTATION  
ALIGNMENT SURVEY TIES,  
BENCHMARKS,  
AND CONTROL POINTS  
DRAWN BY  
CHECKED BY  
DATE