

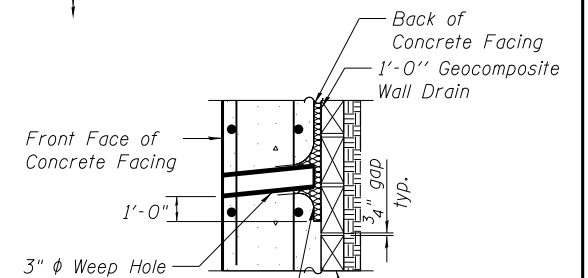
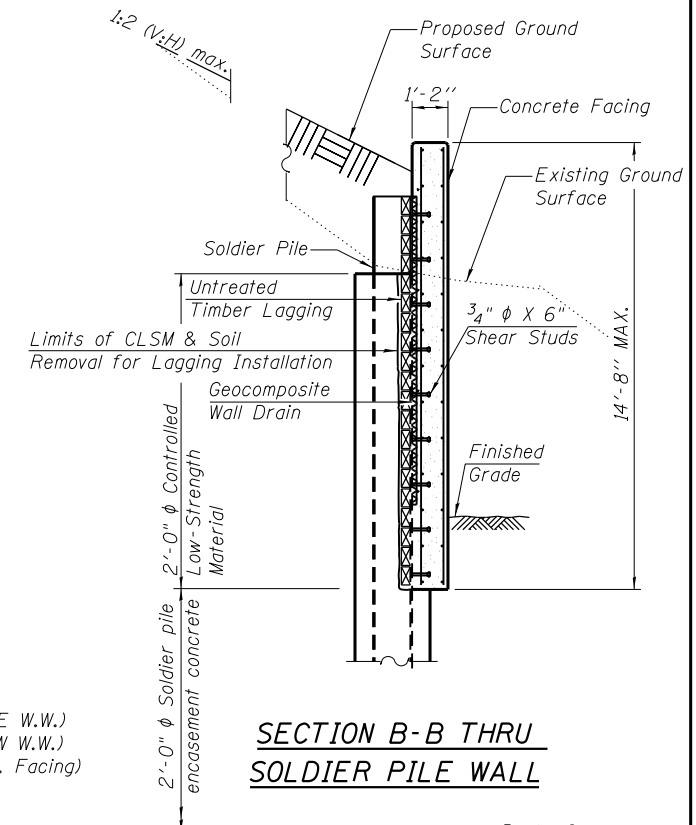
Notes:

Concrete facing for soldier pile wingwalls is paid for as "Concrete structures".  
The embankment material shall be placed against the rear face of the timber lagging prior to placement of the concrete facing.

*In order to minimize excessive deflection and/or stresses in the soldier piles, compaction equipment used within 4 feet of the back face of the timber lagging shall be limited to lightweight mechanical tampers, rollers, or vibratory systems.*

The Contractor is responsible for the design and performance of the lagging using no less than 3" nominal rough-sawn thickness and timber with a minimum allowable bending stress of 1000 psi.

Geocomposite wall drain shall not have a thickness greater than  $\frac{5}{8}$ "



Cut impervious side of Geocomposite Wall Drain and secure to weep hole to ensure a water tight seal.

WEEP HOLE DRAIN DETAIL

Cost of the weep hole drain and the connection to the geocomposite wall drain are included with Concrete Structures.

TABLE A

<i>Pile No.</i>	<i>Top Elev.</i>	<i>Tip Elev.</i>	<i>* Length (ft.)</i>	<i>No. Studs/Pile</i>
<i>SE 1</i>	<i>656.79</i>	<i>627.45</i>	<i>29.5</i>	<i>10</i>
<i>SE 2</i>	<i>655.73</i>	<i>627.45</i>	<i>28.5</i>	<i>9</i>
<i>SE 3</i>	<i>654.66</i>	<i>627.45</i>	<i>27.5</i>	<i>8</i>
<i>NW 1</i>	<i>656.90</i>	<i>627.45</i>	<i>29.5</i>	<i>10</i>
<i>NW 2</i>	<i>655.84</i>	<i>627.45</i>	<i>28.5</i>	<i>9</i>
<i>NW 3</i>	<i>654.77</i>	<i>627.45</i>	<i>27.5</i>	<i>8</i>

\* The length of HP12x53 have been rounded to the nearest 6".



USER NAME =	DESIGNED - OY	REVISED
	CHECKED - DB	REVISED
PLOT SCALE =	DRAWN - CM	REVISED
PLOT DATE =	CHECKED - JB	REVISED

**STATE OF ILLINOIS**  
**DEPARTMENT OF TRANSPORTATION**

**SOLDIER PILE WALL DETAILS**  
**STRUCTURE NO. 050-2057**

SHEET NO. 4 OF 6 SHEETS

F.A.P. RTE.	SECTION	COUNTY	TOTAL SHEETS	SHEET NO.
786	(110)BR-1	LASALLE	69	44
		CONTRACT NO. 66B19		
ILLINOIS FED. AID PROJECT				