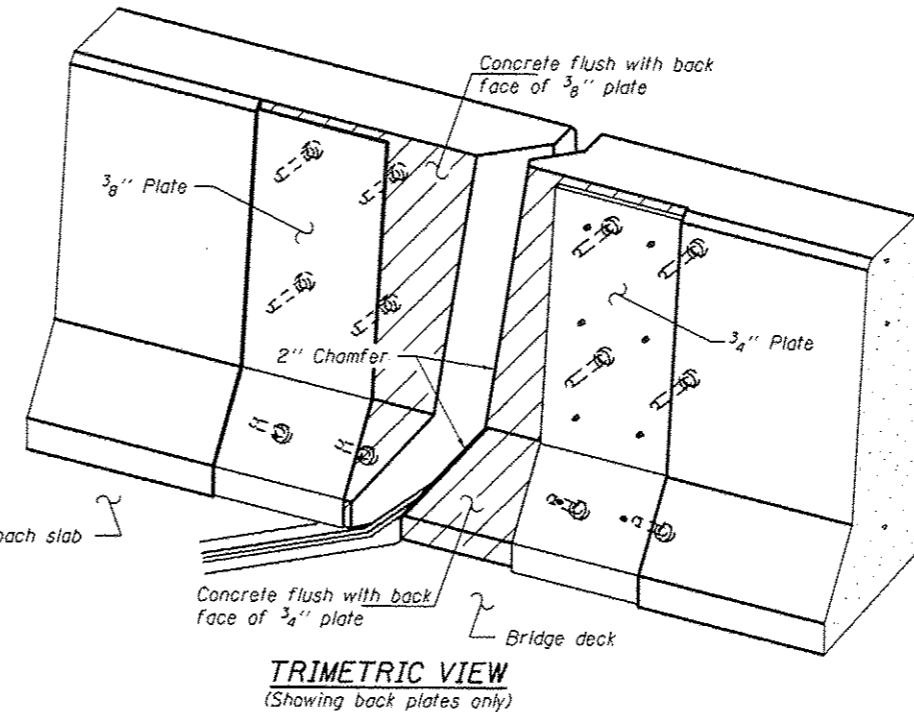
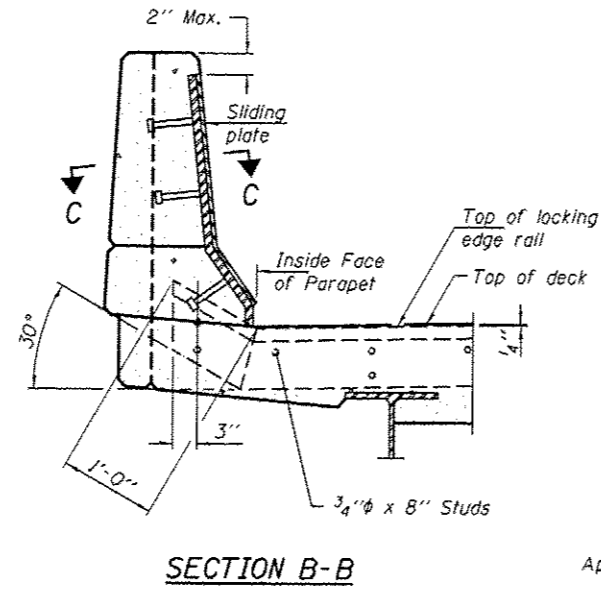
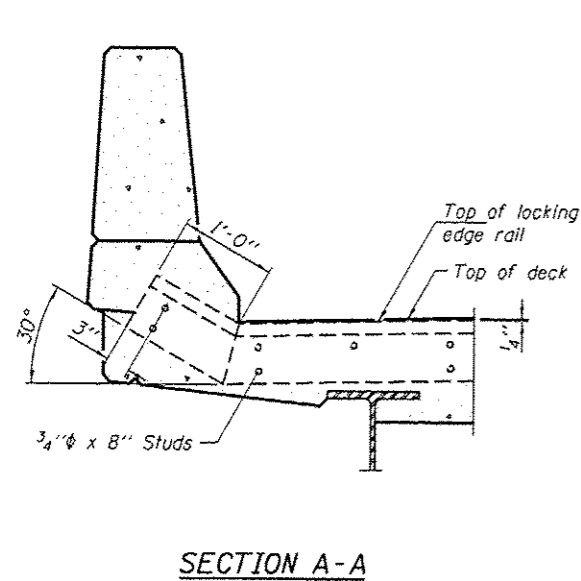
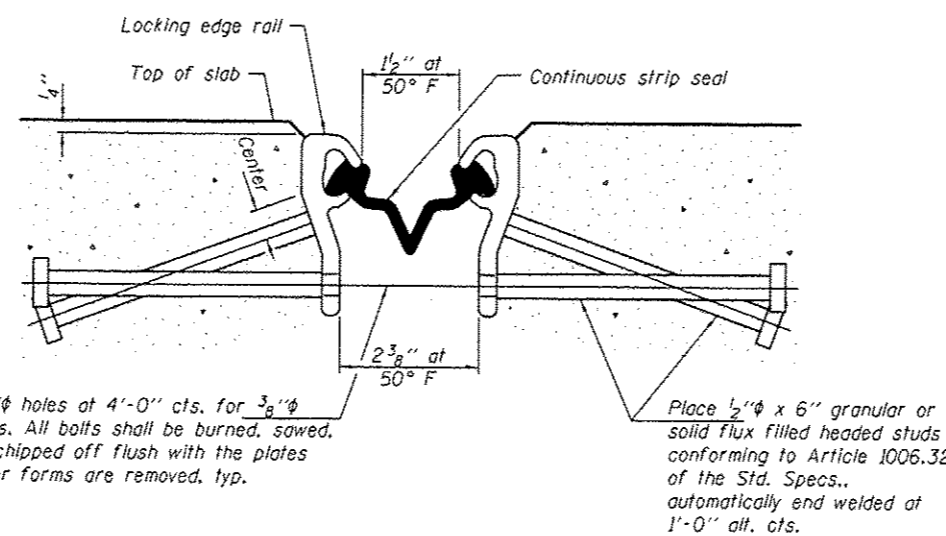
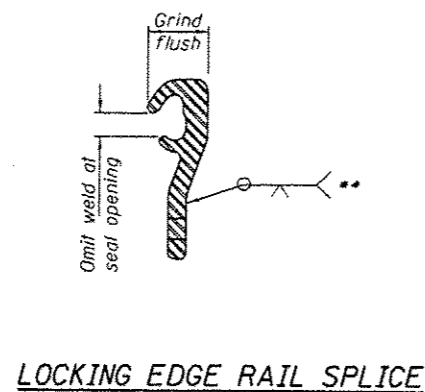
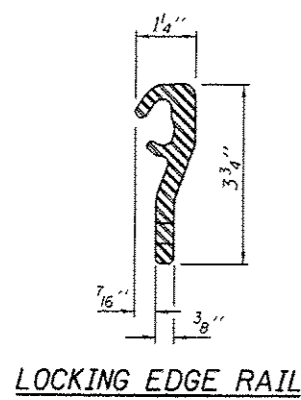


TYPICAL END TREATMENT AT SIDEWALK OR MEDIAN
Shorter plates with a single row of studs at 12" cts. may be necessary on medians which are shallower than 9". See manufacturer's recommendation.



* Granular or solid flux filled headed studs conforming to Article 1006.32 of the Std. Specs., automatically end welded.



Notes:
The strip seal shall be made continuous and shall have a minimum thickness of 1/4". The configuration of the strip seal shall match the configuration of the Locking Edge Rails.
The height and thickness of the Locking Edge Rails shown are minimum dimensions. The actual configuration of the Locking Edge Rails and matching strip seal may vary from manufacturer to manufacturer. Flanged edge rails will not be allowed.
The inside of the Locking Edge Rail groove shall be free of weld residue.
Locking Edge Rails may be spliced at slope discontinuities and stage construction joints.
All steel components shall be galvanized after fabrication according to Article 520.03 of the Standard Specifications.
Maximum space between rail segments at stage lines shall be 3#16", sealed with a suitable sealant.
Parapet plates and anchorage studs for skews $> 30^\circ$ included in the cost of Preformed Joint Strip Seal.
The manufacturer's recommended installation methods shall be followed.

** Back gouge not required if complete joint penetration is verified by mock-up.

BILL OF MATERIAL

Item	Unit	Total
Preformed Joint Strip Seal	Foot	82

DESIGNED <i>SMR</i>	EXAMINED <i>Timothy A. Anzani</i>	DATE <i>NOVEMBER 12, 2013</i>
CHECKED <i>TLC</i>	PASSED <i>ACTING ENGINEER OF STRUCTURAL SERVICES</i>	
DRAWN <i>baliva</i>		
CHECKED <i>SMR TLC</i>		

STATE OF ILLINOIS DEPARTMENT OF TRANSPORTATION

PREFORMED JOINT STRIP SEAL SN 081-0124

F.A.I. RTE. 88	SECTION 02 BRIDGE REPAIR 2014-1	COUNTY ROCK ISLAND	TOTAL SHEETS 10	SHEET NO. 9
				CONTRACT NO. 64J91