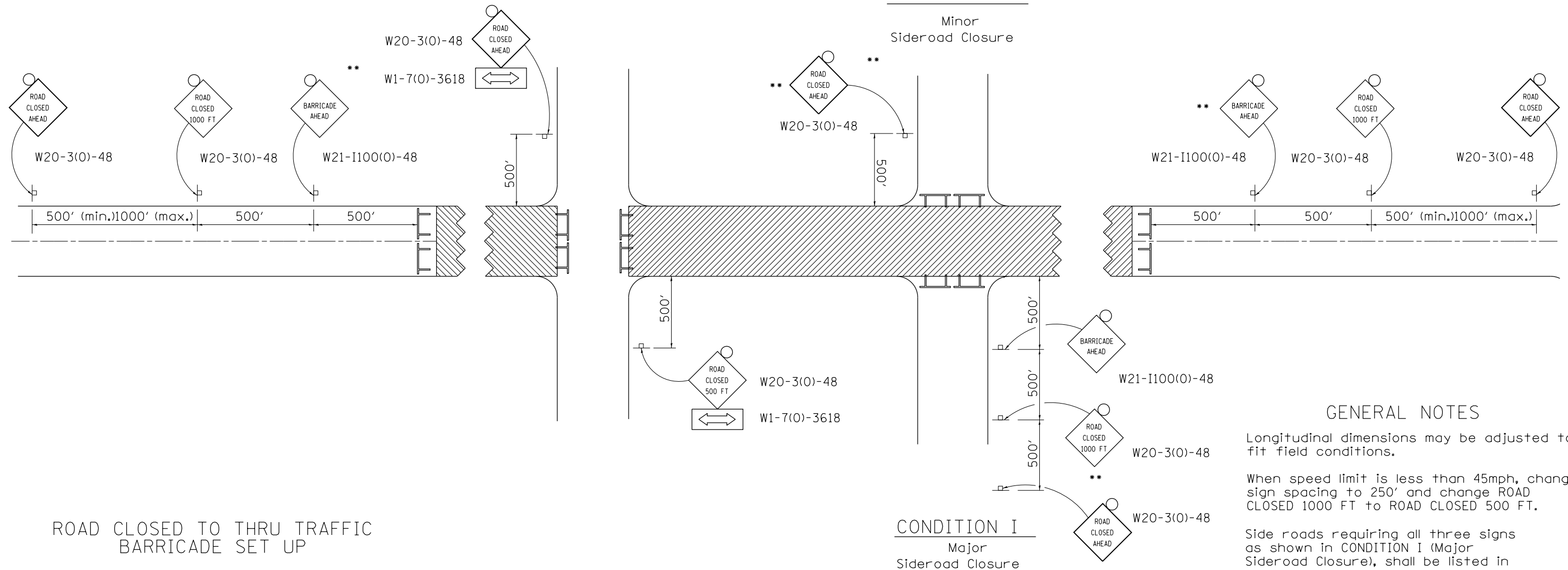


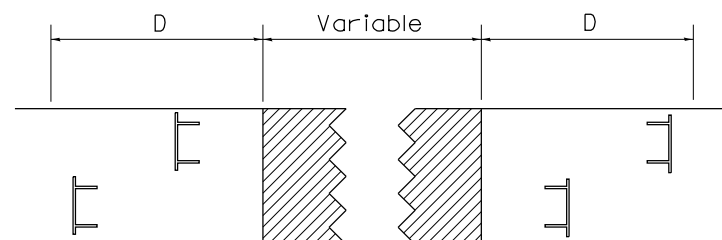
# TRAFFIC CONTROL FOR ROAD CLOSURE

## CONDITION II

Minor Sideroad Closure

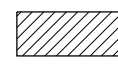

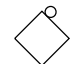


### ROAD CLOSED TO THRU TRAFFIC BARRICADE SET UP



Type III Barricades and R11-4-4830 signs shall be as shown in "Road Closed To Thru Traffic" detail on Highway Standard 701901. If the distance "D" exceeds 2000' an additional set of barricades and R11-4-4830 shall be placed at each end of the work area.

### SYMBOLS

-  Work area
-  Type III Barricade with Flashers
-  Sign with flashing light

### GENERAL NOTES

Longitudinal dimensions may be adjusted to fit field conditions.

When speed limit is less than 45mph, change sign spacing to 250' and change ROAD CLOSED 1000 FT to ROAD CLOSED 500 FT.

Side roads requiring all three signs as shown in CONDITION I (Major Sideroad Closure), shall be listed in the special provision.

\*\* Where local access is to be maintained, barricades are to be set up as shown in Road Closed to thru traffic. Type III Barricades and R11-2-4830 signs shall be as shown in "Road Closed To All Traffic" detail on Highway Standard 701901.

All dimensions are in inches unless otherwise shown.

### TYPICAL APPLICATION FOR ROAD CLOSURE

|  |                                      |            |                    |   |   |                         |             |    |             |         |        |              |           |
|--|--------------------------------------|------------|--------------------|---|---|-------------------------|-------------|----|-------------|---------|--------|--------------|-----------|
| FILE NAME =                            | USER NAME = dosddd                   | DESIGNED - | REVISED - 10-17-11 | <b>STATE OF ILLINOIS<br/>DEPARTMENT OF TRANSPORTATION</b> | <b>REGION 2 / DISTRICT 2 STANDARD</b>   |                         |             |    | F.A.I. RTE. | SECTION | COUNTY | TOTAL SHEETS | SHEET NO. |
| D:\BR\Bos\Rock Island\64J91 Repairs SN | 081-0124\CADD\0207613-sht-cover.dgn  | DRAWN -    | REVISED -          |   | 88                                      | D2 BRIDGE REPAIR 2014-1 | ROCK ISLAND | 10 | 4           |         |        |              |           |
|  | PLOT SCALE = 100.0000' / 1in.        | CHECKED -  | REVISED -          |   | CONTRACT NO. 64J91                      |                         |             |    |             |         |        |              |           |
|  | PLOT DATE = Tue Sep 17 07:52:34 2013 | DATE -     | REVISED -          |   | SCALE: SHEET NO. OF SHEETS STA. TO STA. |                         |             |    |             |         |        |              |           |