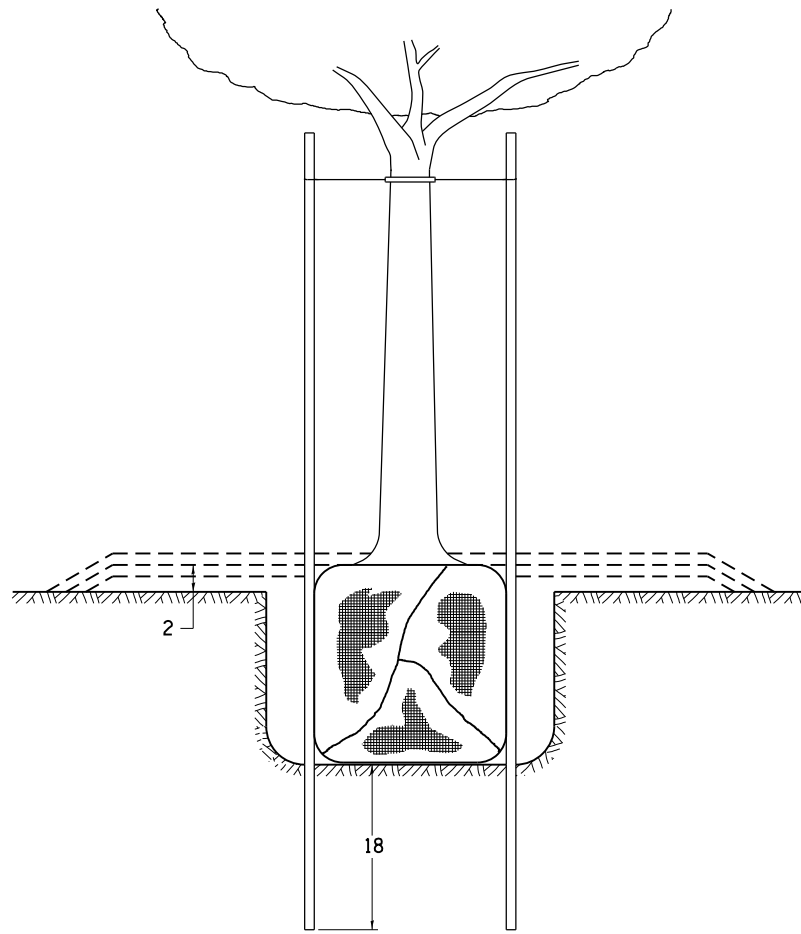
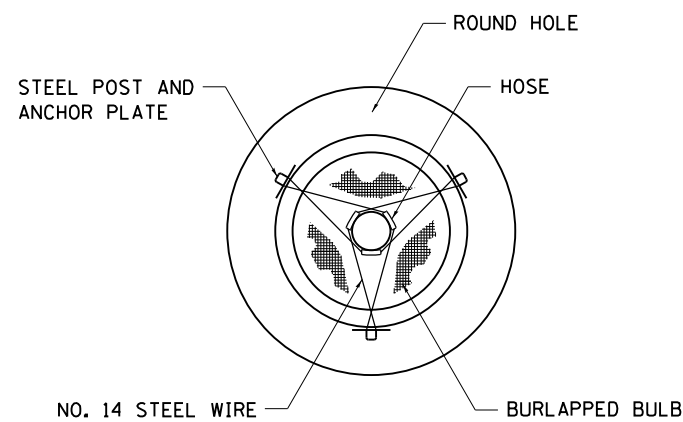


# DETAILS OF PLANTING AND BRACING TREES

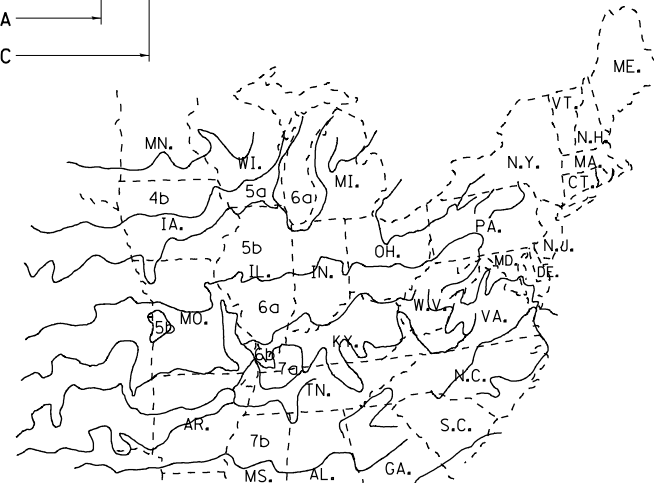
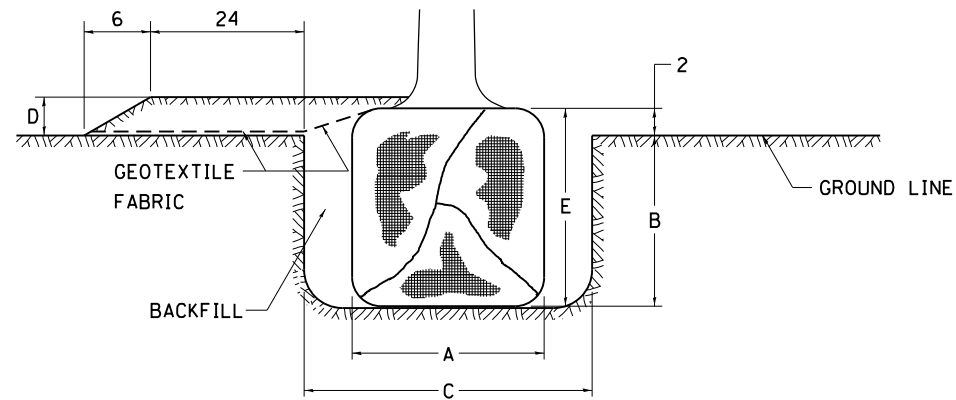


TREES SMALLER THAN 4 1/2 IN DIAMETER



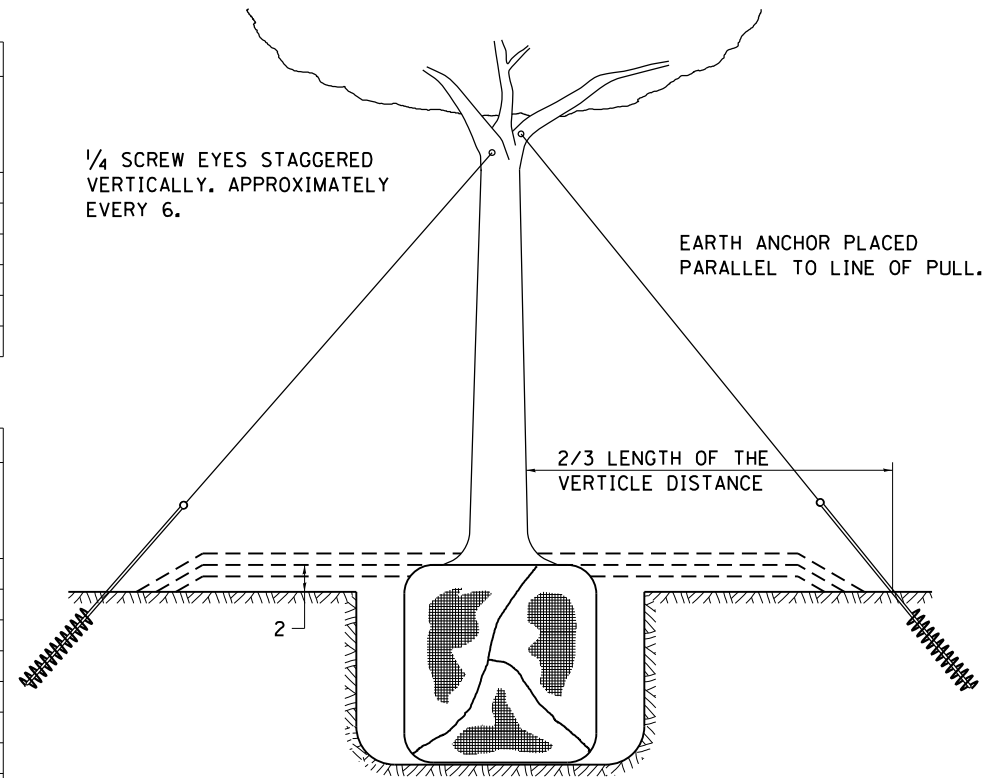
| SMALL      | A                             | B                        | C                        | D                        | E                          | F                              |
|------------|-------------------------------|--------------------------|--------------------------|--------------------------|----------------------------|--------------------------------|
| TREE SIZE  | DIAMETER OF BALL OR ROOT SYS. | DEPTH OF HOLE EXCAVATION | WIDTH OF HOLE EXCAVATION | THICKNESS OF MULCH COVER | DEPTH OF BALL OR ROOT SYS. | VOLUME OF MULCH COVER CU. YDS. |
| 5'-6'      | 16                            | 10                       | 30                       | 4                        | 12                         | 0.54                           |
| 5'-6' BB   | 16                            | 10                       | 30                       | 4                        | 12                         | 0.54                           |
| 6'-7' BB   | 18                            | 12                       | 30                       | 4                        | 14                         | 0.54                           |
| 7'-8' BB   | 20                            | 11                       | 30                       | 4                        | 13                         | 0.54                           |
| 8'-10' BB  | 24                            | 14                       | 36                       | 4                        | 16                         | 0.61                           |
| 10'-12' BB | 26                            | 15                       | 36                       | 4                        | 17                         | 0.61                           |

| LARGE      | A                             | B                        | C                        | D                        | E                          | F                              |
|------------|-------------------------------|--------------------------|--------------------------|--------------------------|----------------------------|--------------------------------|
| TREE SIZE  | DIAMETER OF BALL OR ROOT SYS. | DEPTH OF HOLE EXCAVATION | WIDTH OF HOLE EXCAVATION | THICKNESS OF MULCH COVER | DEPTH OF BALL OR ROOT SYS. | VOLUME OF MULCH COVER CU. YDS. |
| 0-2        | 20                            | 11                       | 36                       | 4                        | 13                         | 0.61                           |
| 2-2 1/2 BB | 24                            | 14                       | 48                       | 4                        | 16                         | 0.78                           |
| 2 1/2-3 BB | 28                            | 17                       | 48                       | 4                        | 19                         | 0.78                           |
| 3-3 1/2 BB | 32                            | 17                       | 60                       | 4                        | 19                         | 0.96                           |
| 3 1/2-4 BB | 36                            | 20                       | 60                       | 4                        | 22                         | 0.96                           |
| 4-4 1/2 BB | 40                            | 22                       | 72                       | 4                        | 24                         | 1.16                           |
| 4 1/2-5 BB | 44                            | 24                       | 72                       | 4                        | 26                         | 1.16                           |
| 5-5 1/2 BB | 48                            | 27                       | 84                       | 4                        | 29                         | 1.38                           |

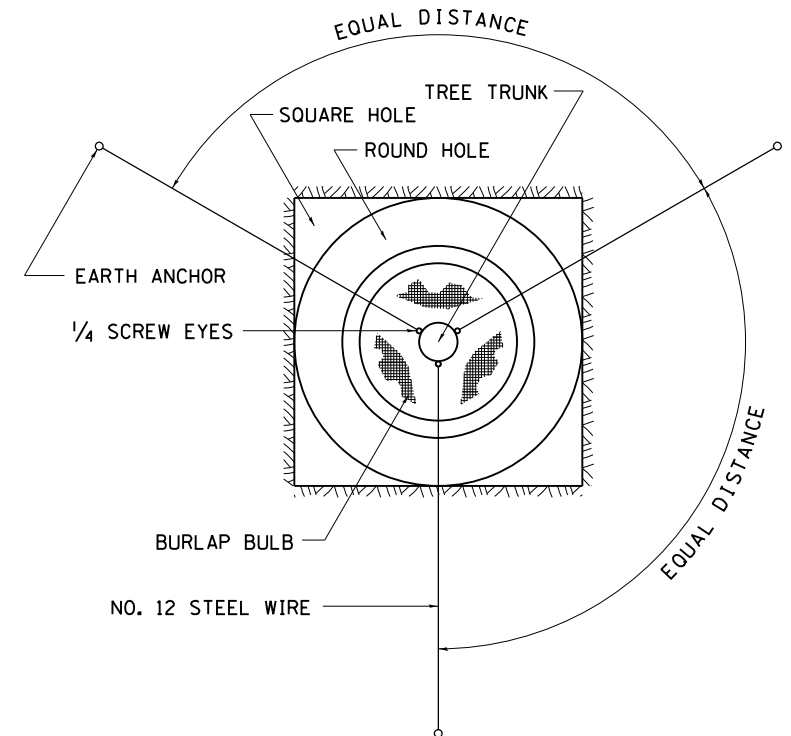


PLANT HARDINESS ZONE MAP

U.S. DEPARTMENT OF AGRICULTURE  
AGRICULTURAL RESEARCH SERVICE  
PUBLICATION NO. 814



TREES OVER 4 1/2 IN DIAMETER



ALL DIMENSIONS ARE IN INCHES  
UNLESS OTHERWISE NOTED.

|                        |                                      |            |                    |
|------------------------|--------------------------------------|------------|--------------------|
| FILE NAME =            | USER NAME = rundbladerr              | DESIGNED - | REVISED - 10-18-11 |
| et:\pw\work\p\d0232736 | D201310-shr-cover.dgn                | DRAWN -    | REVISED -          |
|                        | PLOT SCALE = 40.0000' / in.          | CHECKED -  | REVISED -          |
|                        | PLOT DATE = Thu Oct 10 07:46:08 2013 | DATE -     | REVISED -          |

STATE OF ILLINOIS  
DEPARTMENT OF TRANSPORTATION

REGION 2 / DISTRICT 2 STANDARD

SCALE: SHEET NO. OF SHEETS STA. TO STA.

|   |         |          |              |           |
|---|---------|----------|--------------|-----------|
| F.A.P. RTE.                                   | SECTION | COUNTY   | TOTAL SHEETS | SHEET NO. |
| 650   | 104T-3  | JoDAVISS | 97           | 73        |
| CONTRACT NO. 64F74                            |         |          |              |           |
| FED. ROAD DIST. NO. ILLINOIS FED. AID PROJECT |         |          |              |           |