

STATE OF ILLINOIS
DEPARTMENT OF TRANSPORTATION
DIVISION OF HIGHWAYS

**PROPOSED
HIGHWAY PLANS**

FAP 650 (IL 78) & FAS 74 (CANYON ROAD)
SECTION 104T-3
PROJECT: ACF-ACRS-0005(952)
REMOVAL & REPLACEMENT OF CONCRETE BOX
CULVERTS ALONG IL 78 AND CANYON ROAD
JODAVIESS COUNTY

C-92-035-13

F.A.B. RTE.	SECTION	COUNTY	TOTAL SHEETS	SHEET NO.
650	104T-3	JODAVIESS	97	1
		ILLINOIS	CONTRACT NO. 64F74	

D-92-013-10

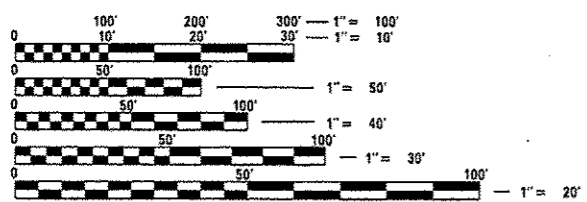


LOCATION OF SECTION INDICATED THUS: - [rectangle symbol]

FOR INDEX OF SHEETS, SEE SHEET NO. 2
FOR STATE STANDARD, SEE SHEET NO. 2

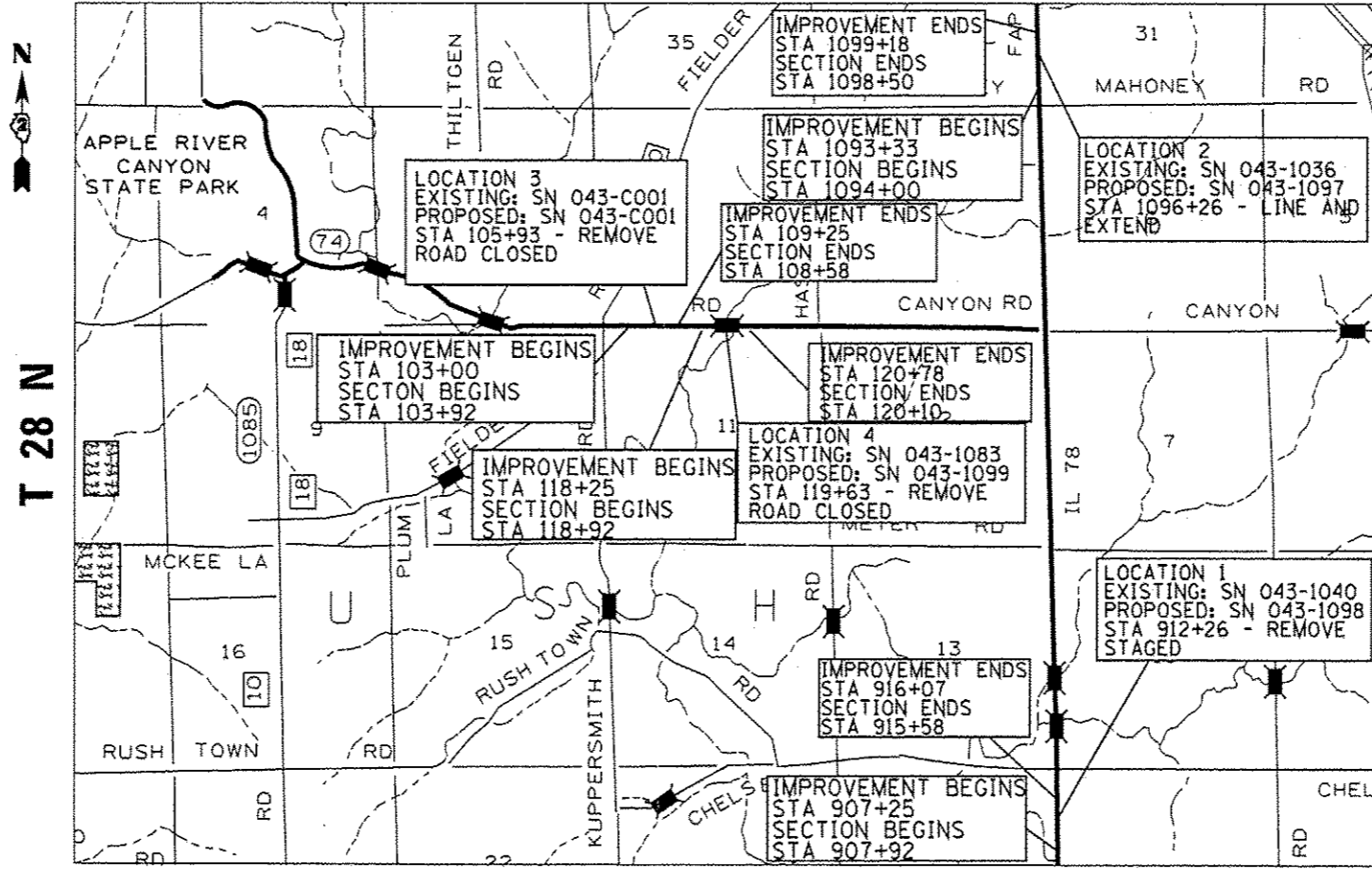
RUSH TOWNSHIP
SECTION 2,11,24
NORA TOWNSHIP
SECTION 19
WARREN TOWNSHIP
SECTION 31,36

LOCATION	GROSS LENGTH (FT)	NET LENGTH (FT)
1	700	700
2	500	500
3	600	600
4	252	252
TOTAL	2052	2052



FULL SIZE PLANS HAVE BEEN PREPARED USING STANDARD ENGINEERING SCALES. REDUCED SIZED PLANS WILL NOT CONFORM TO STANDARD SCALES. IN MAKING MEASUREMENTS ON REDUCED PLANS, THE ABOVE SCALES MAY BE USED.

J.U.L.I.E.
JOINT UTILITY LOCATION INFORMATION FOR EXCAVATION
1-800-892-0123
OR 811



SQUAD ENGINEER: SARA GUZZARDO PHONE# (815) 284-5938
PROJECT ENGINEER: MASOOD AHMAD SENIOR SQUAD ENGINEER SAMEER ABDULLAH
CONTRACT NO. 64F74

GROSS LENGTH = 2052 FT. = 0.39 MILE
NET LENGTH = 2052 FT. = 0.39 MILE

STATE OF ILLINOIS
DEPARTMENT OF TRANSPORTATION
DIVISION OF HIGHWAYS
SUBMITTED Oct 11 2013
Paul A. Soete
DEPUTY DIRECTOR OF HIGHWAYS, REGION ENGINEER
Dec 6 2013
John D. Baranelli PE/IC
ENGINEER OF DESIGN AND ENVIRONMENT
Dec 6 2013
Omer Osman PE/IC
DIRECTOR OF HIGHWAYS, CHIEF ENGINEER

PRINTED BY THE AUTHORITY
OF THE STATE OF ILLINOIS

DISTRICT 2, DIXON