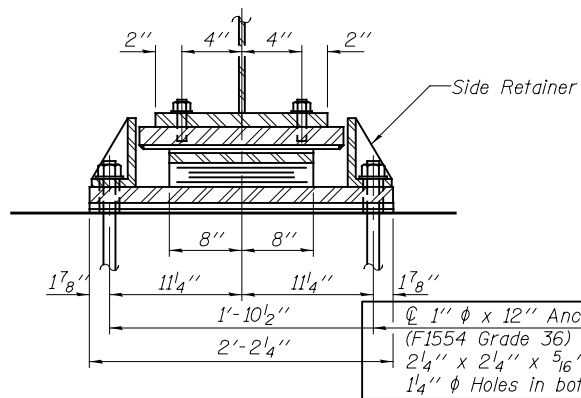


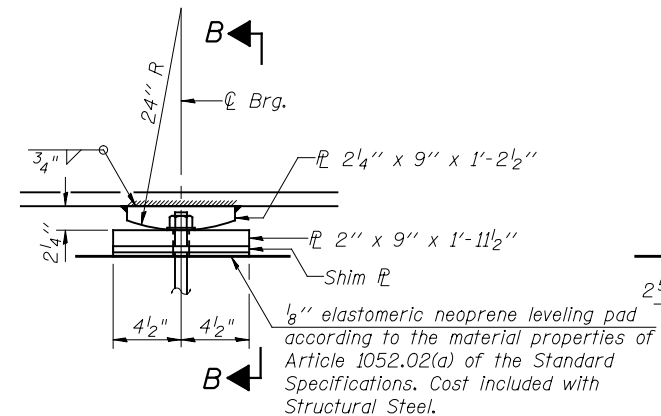
ELEVATION AT WEST ABUT.

TYPE II ELASTOMERIC EXP. BRG.



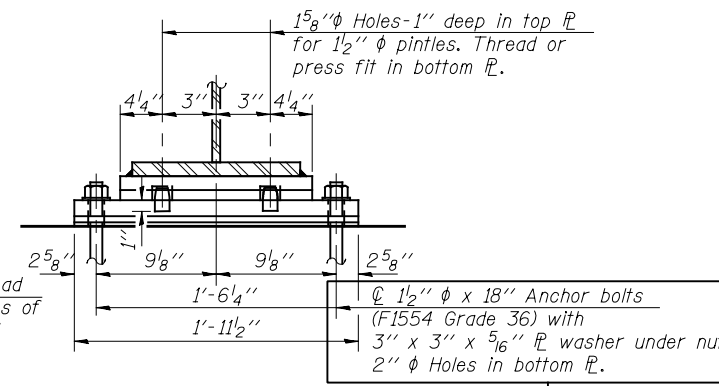
SECTION A-A

1" ϕ x 12" Anchor bolts (F1554 Grade 36) with 2 1/4" x 2 1/4" x 5/16" ϕ washer under nut. 1 1/4" ϕ Holes in bottom ϕ .



ELEVATION AT PIER 2

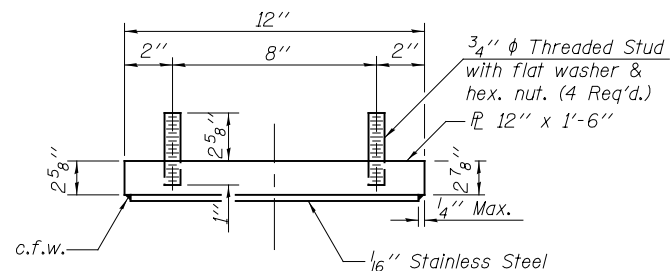
FIXED BEARING AT PIER 2



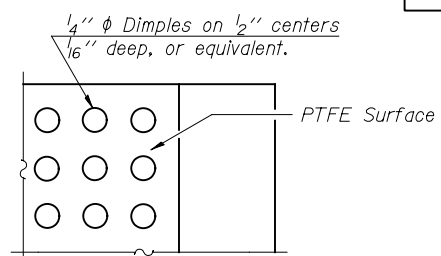
SECTION B-B

FOR INFORMATION ONLY

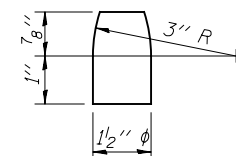
FOR INFORMATION ONLY



TOP BEARING ASSEMBLY



PLAN-PTFE SURFACE



PINTLE

Notes:

Anchor bolts shall be ASTM F1554 all-thread (or an Engineer-approved alternate material) of the grade(s) and diameter(s) specified. The corresponding specified grade of AASHTO M314 anchor bolts may be used in lieu of ASTM F1554.

Anchor bolts at fixed bearings may be either cast in place or installed in holes drilled after the supported member is in place.

Anchor bolts for Type II bearings shall be placed in holes drilled in the concrete through holes in the bottom bearing plate after members are in place. Side retainers shall be placed after bolts are installed.

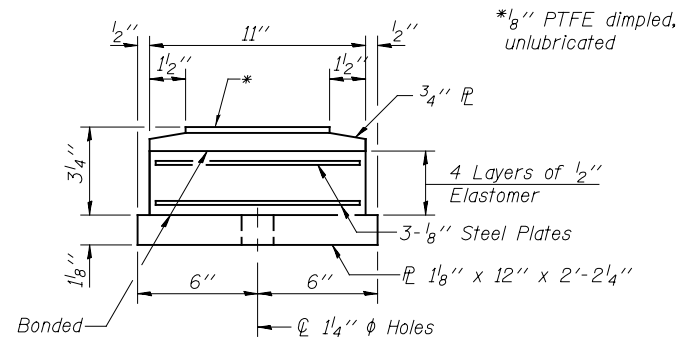
Drilled and set anchor bolts shall be installed according to Article 521.06 of the Standard Specifications.

Side retainers and other steel members required for the elastomeric bearing assembly shall be included in the cost of Elastomeric Bearing Assembly, Type II.

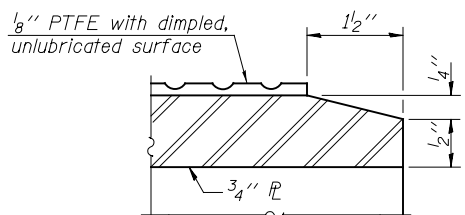
The 1/8" PTFE sheet shall be bonded directly to the top steel plate with a two-component, medium viscosity epoxy resin, conforming to the requirements of the Federal Specification MMM-A-134, Type I. The bond agent shall be applied on the full area of the contact surfaces.

Bonding of 1/8" PTFE sheet during vulcanizing process will be permitted provided the process and method of adjusting assembly height is approved by the Engineer.

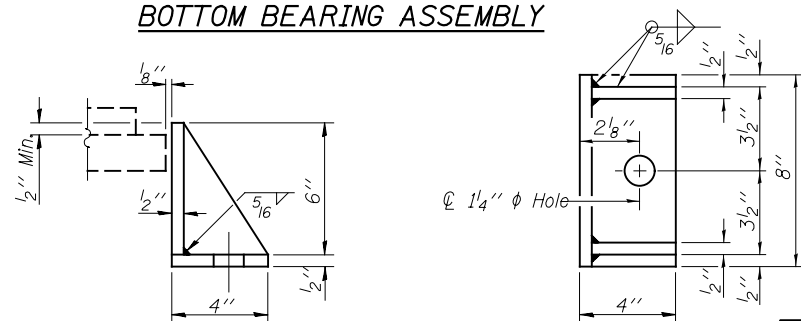
Two 1/8 in. adjusting shims shall be provided for each bearing in addition to all other plates or shims and placed as shown on bearing details.



BOTTOM BEARING ASSEMBLY

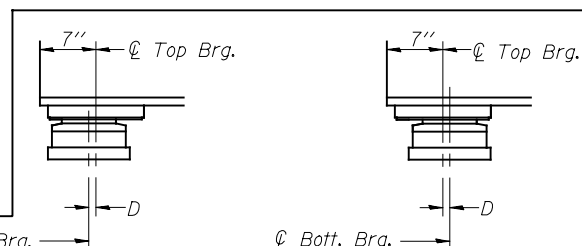


SECTION THRU PTFE



SIDE RETAINER

Equivalent rolled angle with stiffeners will be allowed in lieu of welded plates.



BELOW 50°F.

ABOVE 50°F.

(Move bott. brg. away from fixed brg.) (Move bott. brg. toward fixed brg.)

SETTING ANCHOR BOLTS AT EXP. BRG.

D=1/8" per each 100' of expansion for every 15° temp. change from the normal temp. of 50°F.

FOR INFORMATION ONLY

SHIM PLATE SCHEDULE

Beam	W. Abut.	Pier 2
1	1 1/2"	1"
2	-	-
3	3/4"	-
4	-	-
5	3/4"	-
6	-	-
7	5/8"	-
8	-	-
9	-	-
10	-	-
11	-	-
12	-	-
13	-	-
14	1/2"	-
15	1/8"	1/2"
16	-	1/8"

BILL OF MATERIAL

Item	Unit	Total
Furnishing Elastomeric Bearing Assembly Type II	Each	16
Anchor Bolts, 1"	Each	32
Anchor Bolts, 1 1/2"	Each	32

I-2E-2

1-27-12



USER NAME =	DESIGNED - KMP	REVISIONS
	CHECKED - AMK	REVISIONS
PLOT SCALE =	DRAWN - BAR	REVISIONS
PLOT DATE =	CHECKED - KJZ	REVISIONS

STATE OF ILLINOIS
DEPARTMENT OF TRANSPORTATION

BEARING DETAILS 1
STRUCTURE NO. 022-0512

SHEET NO. S-17 OF S-18 SHEETS

F.A.P. RTE.	SECTION	COUNTY	TOTAL SHEETS	SHEET NO.
311	652-A	DuPAGE	20	19
				CONTRACT NO. 60W84
ILLINOIS FED. AID PROJECT				