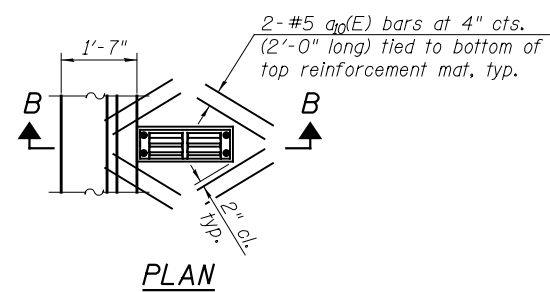
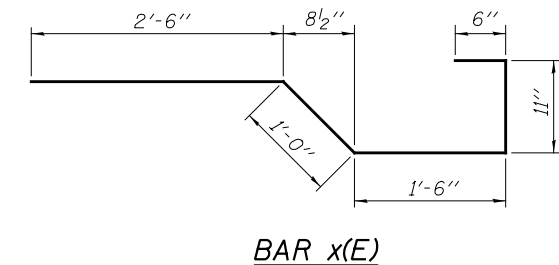
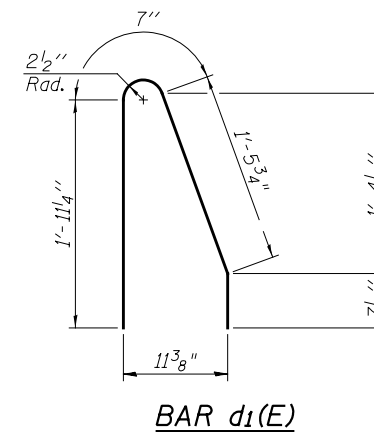
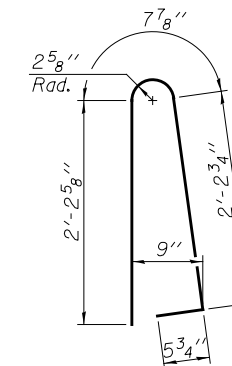
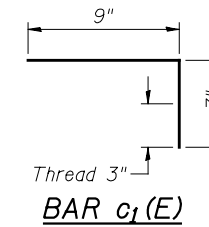
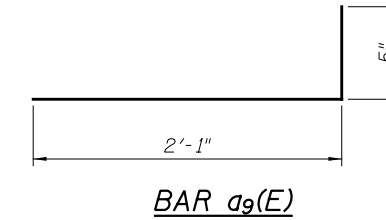
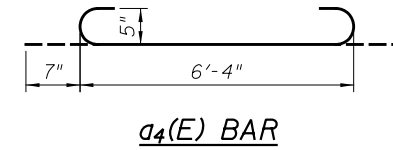
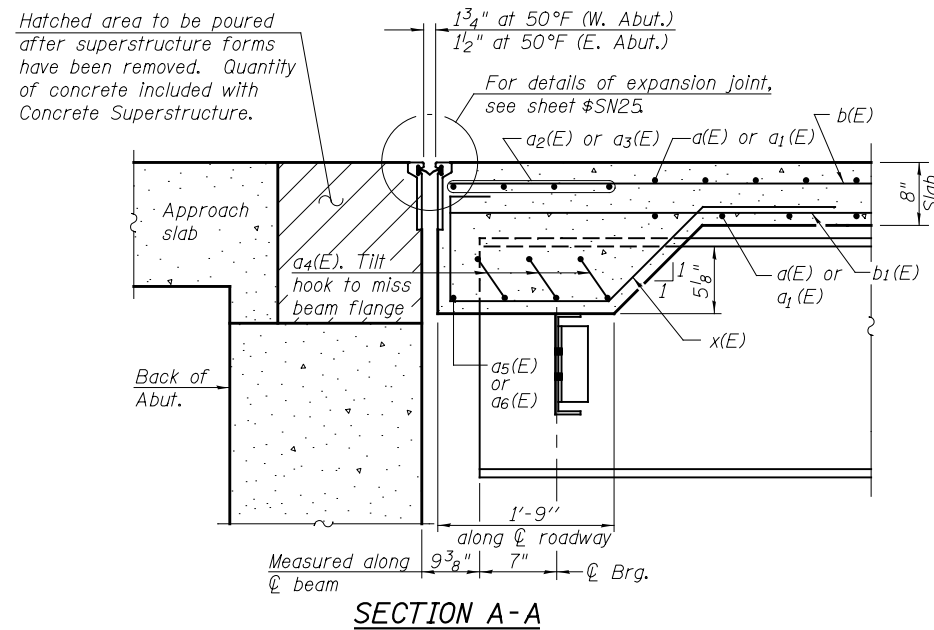


SECTION B-B



Note:
Cut longitudinal reinforcement to
clear drainage scuppers.



**SUPERSTRUCTURE
BILL OF MATERIAL**

Bar	No.	Size	Length	Shape
a(E)	833	#5	42'-9"	—
a1(E)	833	#5	53'-6"	—
a2(E)	8	#5	46'-11"	—
a3(E)	8	#5	58'-7"	—
a4(E)	84	#5	7'-6"	U
a5(E)	2	#5	55'-7"	—
a6(E)	2	#5	43'-5"	—
a7(E)	481	#6	15'-9"	—
a8(E)	477	#6	21'-5"	—
a9(E)	578	#5	2'-6"	—
a10(E)	48	#5	2'-0"	—
b(E)	1232	#5	29'-2"	—
b1(E)	972	#5	27'-0"	—
b2(E)	192	#6	53'-10"	—
c(E)	288	#5	13'-6"	—
c1(E)	576	#5	1'-4"	L
d(E)	630	#5	5'-7"	U
d1(E)	630	#5	4'-7 1/2"	U
e(E)	28	#4	19'-7"	—
e1(E)	84	#4	19'-4"	—
e2(E)	64	#4	14'-5"	—
e3(E)	56	#4	17'-6"	—
e4(E)	12	#4	27'-6"	—
e5(E)	4	#4	36'-6"	—
e6(E)	8	#8	41'-10"	—
e7(E)	8	#8	14'-5"	—
e8(E)	4	#8	38'-1"	—
x(E)	150	#5	6'-5"	U
Reinforcement Bars, Epoxy Coated		Pound	211,290	
Concrete Superstructure		Cu. Yds.	917.6	

Bars indicated thus 1 x 7 - #8 etc. indicates
1 line of bars with 7 lengths per line.

**THIS SHEET INCLUDED FOR
INFORMATION ONLY**



USER NAME =	DESIGNED - BAR	REVISED
	CHECKED - AMK	REVISED
PLOT SCALE =	DRAWN - BAR	REVISED
PLOT DATE =	CHECKED - AMK	REVISED

**STATE OF ILLINOIS
DEPARTMENT OF TRANSPORTATION**

**DECK DETAILS
STRUCTURE NO. 022-0512**

SHEET NO. S-14 OF S-18 SHEETS

F.A.P. RTE.	SECTION	COUNTY	TOTAL SHEETS	SHEET NO.
311	652-A	DuPAGE	20	16
CONTRACT NO. 60W84				

ILLINOIS FED. AID PROJECT