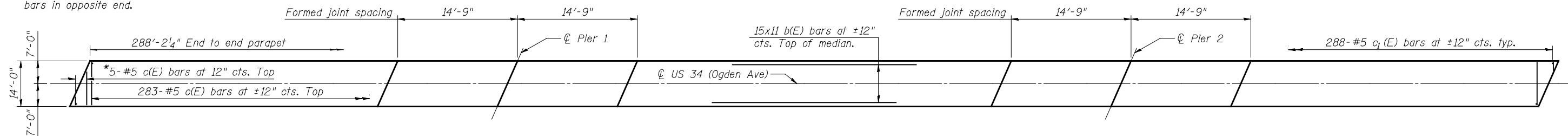


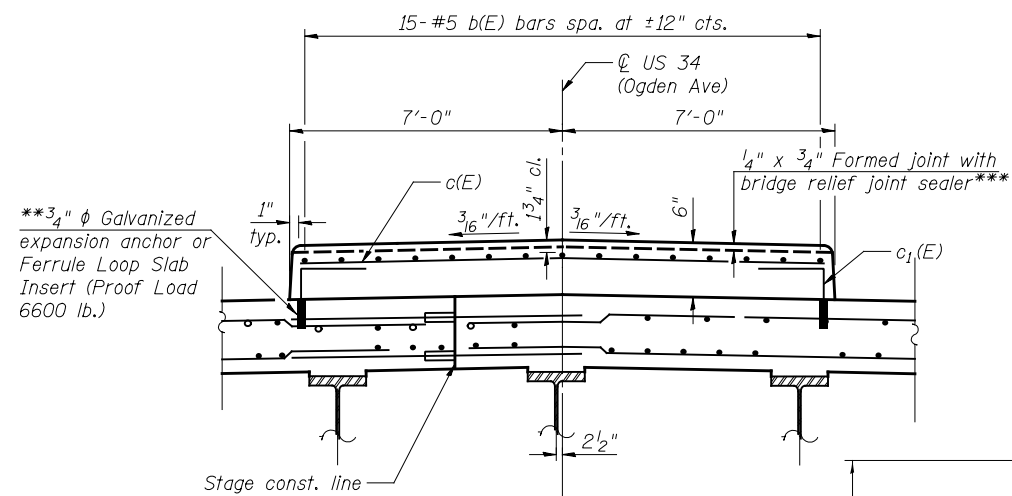
INSIDE ELEVATION OF PARAPET
(All spacings are relative to front face of parapet)

MINIMUM BAR LAP
(Parapet)
#4 bar = 2'-0"
#8 bar = 5'-2"

*Order c(E) bars full length. Cut to fit skew and use remainder of bars in opposite end.



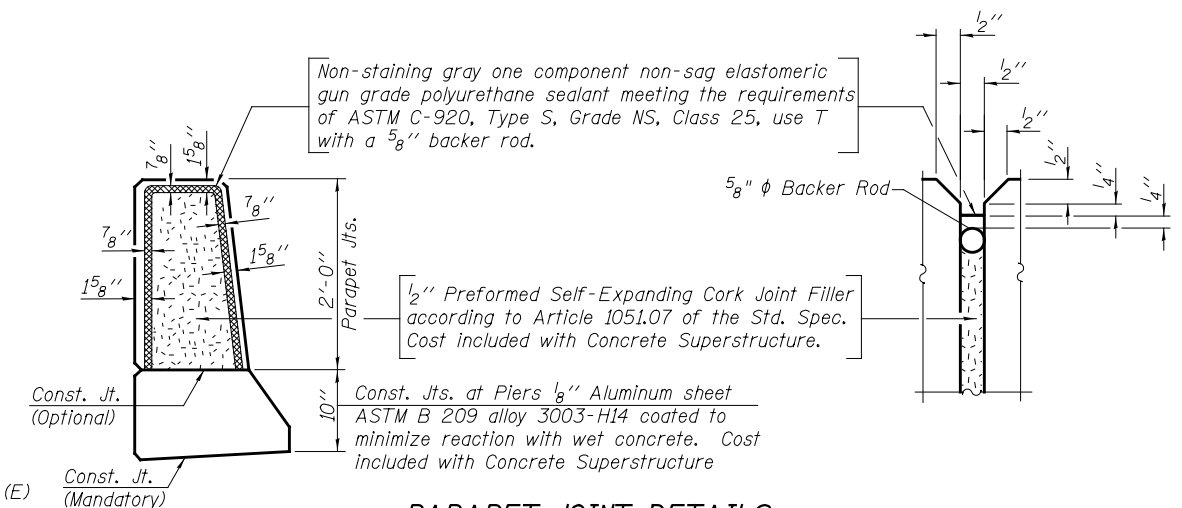
RAISED CURB MEDIAN PLAN



RAISED CURB MEDIAN SECTION

***See Special Provisions. Full width along joint. Breaker rod not required.

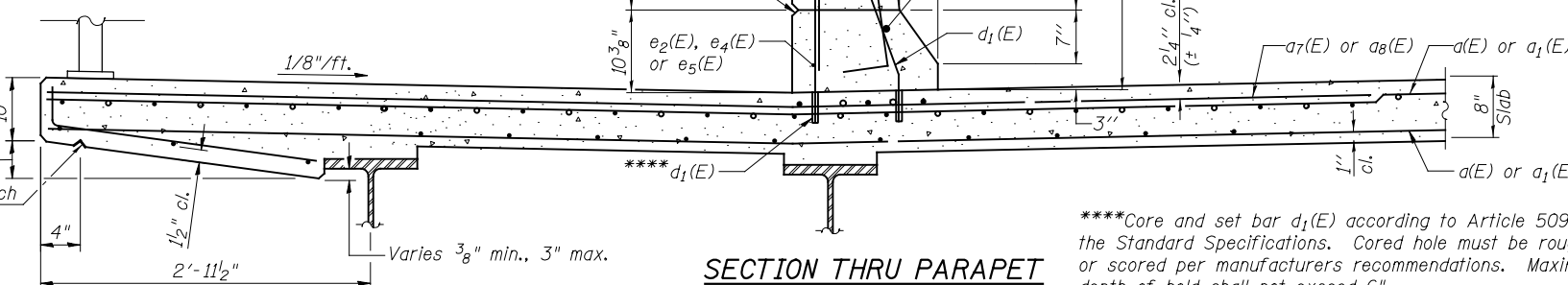
**Cost of expansion anchors/inserts is included in the cost of Reinforcement Bars. Epoxy Coated



PARAPET JOINT DETAILS

THIS SHEET INCLUDED FOR INFORMATION ONLY

note: See Sheet S-14 for Bill of Material and bar bending diagrams.



SECTION THRU PARAPET

****Core and set bar d1(E) according to Article 509.06 of the Standard Specifications. Cored hole must be roughened or scored per manufacturers recommendations. Maximum depth of hold shall not exceed 6".



USER NAME =	DESIGNED - BAR	REVISIONS
	CHECKED - NPP	REVISIONS
PLOT SCALE =	DRAWN - BAR	REVISIONS
PLOT DATE =	CHECKED - NPP	REVISIONS

STATE OF ILLINOIS
DEPARTMENT OF TRANSPORTATION

PARAPET ELEVATIONS AND DETAILS
STRUCTURE NO. 022-0512

SHEET NO. S-13 OF S-18 SHEETS

F.A.P. RTE.	SECTION	COUNTY	TOTAL SHEETS	SHEET NO.
311	652-A	DuPAGE	20	15
CONTRACT NO. 60W84			ILLINOIS FED. AID PROJECT	