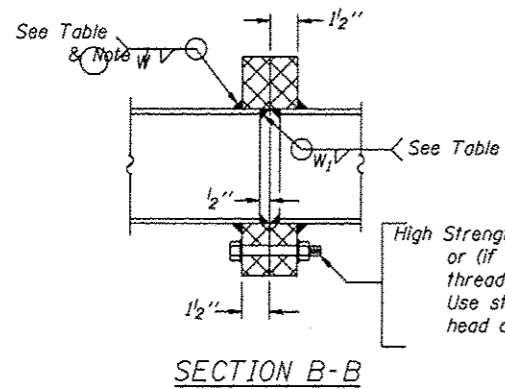


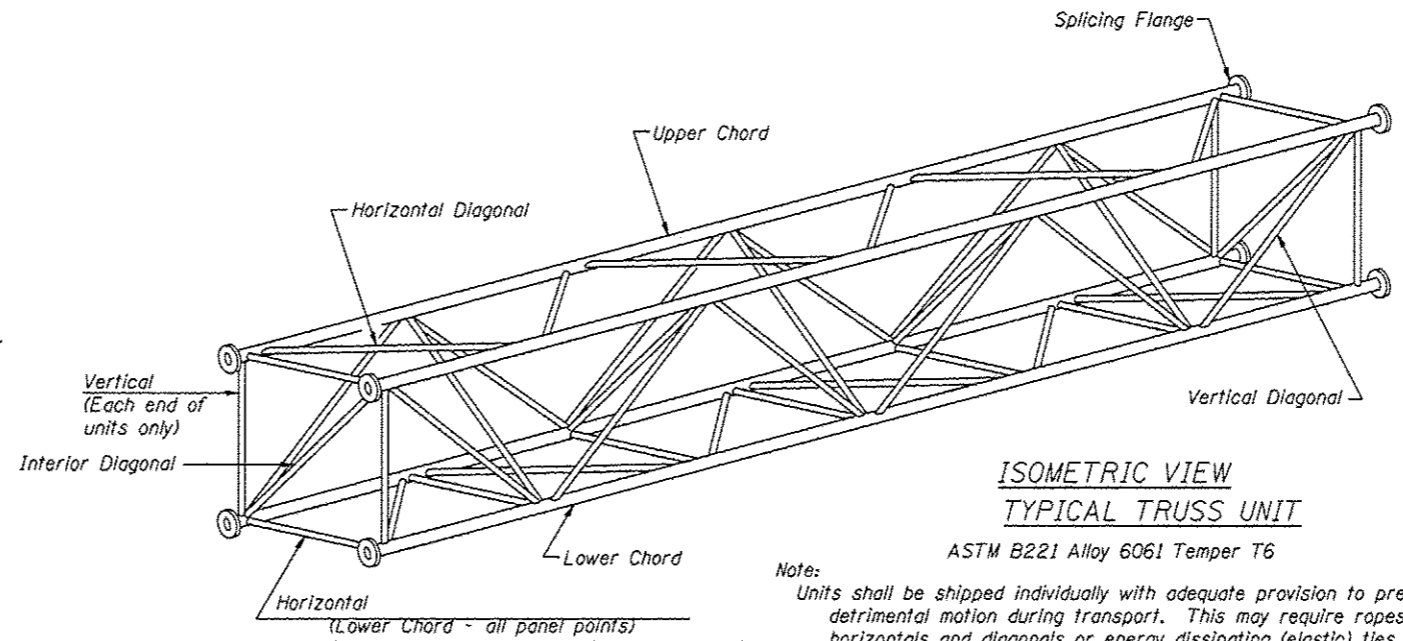
**TRUSS UNIT TABLE**

| Structure Number | Station | Design Truss Type | Exterior Units (2)  |                             |                | Interior Unit |                     |                             | Upper & Lower Chord |        | Verticals; Horizontals; Vertical, Horizontal, and Interior Diagonals |        | Camber at Midspan | Splicing Flange |            |      |            |                |         |         |  |  |
|------------------|---------|-------------------|---------------------|-----------------------------|----------------|---------------|---------------------|-----------------------------|---------------------|--------|--|--------|-------------------|-----------------|------------|------|------------|----------------|---------|---------|--|--|
|                  |         |                   | No. Panels per Unit | Unit Lgth.(L <sub>u</sub> ) | Panel Lgth.(P) | No. Req'd.    | No. Panels per Unit | Unit Lgth.(L <sub>i</sub> ) | Panel Lgth.(P)      | O.D.   | Wall   | O.D.   |                   | Wall            | Bolts      |      | Weld Sizes |                | A       | B       |  |  |
|                  |         |                   |                     |                             |                |               |                     |                             |                     |        |  |        |                   |                 | No./Splice | Dia. | W          | W <sub>1</sub> |         |         |  |  |
| 6S0841072L105.9  | 150+00  | III-A             | 5                   | 28'-11 1/2"                 | 5'-5"          | 1             | 6                   | 33'-9"                      | 5'-5"               | 7"     | 5/16"  | 3 3/4" | 5/16"             | 1.8"            | 6          | 1"   | 1/16"      | 3/16"          | 11 1/2" | 15"     |  |  |
| 6S0541055R124.7  | 285+00  | I-A               | 7                   | 34'-3"                      | 4'-7 1/2"      | 1             | 6                   | 29'-0"                      | 4'-7 1/2"           | 5 1/2" | 5/16"  | 2 1/2" | 5/16"             | 3.1"            | 6          | 7/8" | 3/8"       | 1/4"           | 9 1/4"  | 12 1/4" |  |  |
|                  |         |                   |                     |                             |                |               |                     |                             |                     |        |  |        |                   |                 |            |      |            |                |         |         |  |  |
|                  |         |                   |                     |                             |                |               |                     |                             |                     |        |  |        |                   |                 |            |      |            |                |         |         |  |  |
|                  |         |                   |                     |                             |                |               |                     |                             |                     |        |  |        |                   |                 |            |      |            |                |         |         |  |  |
|                  |         |                   |                     |                             |                |               |                     |                             |                     |        |  |        |                   |                 |            |      |            |                |         |         |  |  |
|                  |         |                   |                     |                             |                |               |                     |                             |                     |        |  |        |                   |                 |            |      |            |                |         |         |  |  |
|                  |         |                   |                     |                             |                |               |                     |                             |                     |        |  |        |                   |                 |            |      |            |                |         |         |  |  |
|                  |         |                   |                     |                             |                |               |                     |                             |                     |        |  |        |                   |                 |            |      |            |                |         |         |  |  |
|                  |         |                   |                     |                             |                |               |                     |                             |                     |        |  |        |                   |                 |            |      |            |                |         |         |  |  |
|                  |         |                   |                     |                             |                |               |                     |                             |                     |        |  |        |                   |                 |            |      |            |                |         |         |  |  |
|                  |         |                   |                     |                             |                |               |                     |                             |                     |        |  |        |                   |                 |            |      |            |                |         |         |  |  |

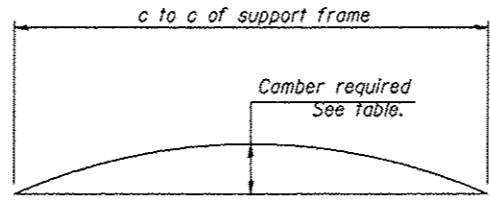


High Strength bolts with locknuts or (if members interfere) threaded studs with 2 locknuts. Use stainless steel washers under head and nut. See table.

① Splicing Flanges shall be attached to each truss unit with the truss shop assembled to camber shown. Truss units shall be in proper alignment and flange surfaces shall be shop bolted into full contact before welding. Sufficient external welds or tacks shall be made to secure flanges until remaining welds are made after disassembly. Adjacent flanges shall be "match marked" to insure proper field assembly.

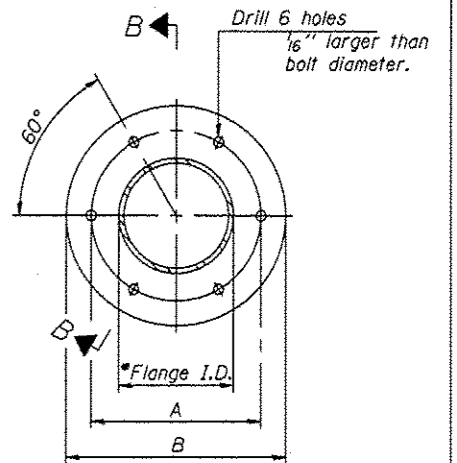
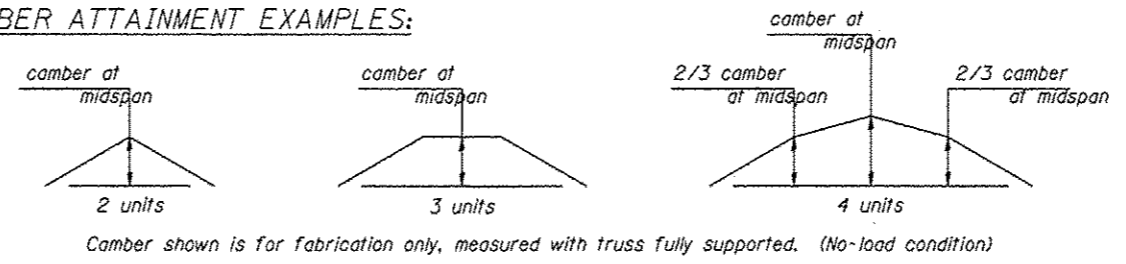


Note: Units shall be shipped individually with adequate provision to prevent detrimental motion during transport. This may require ropes between horizontals and diagonals or energy dissipating (elastic) ties to the vehicle. The Contractor is responsible for maintaining the configuration and protection of the units.

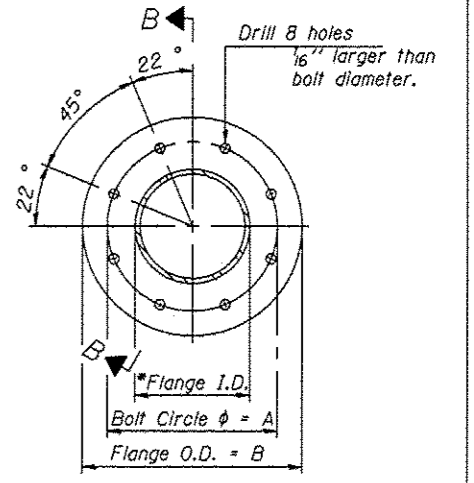


CAMBER DIAGRAM  
Camber curve shown is theoretical. Actual camber attained by slope changes at splices between units.

**CAMBER ATTAINMENT EXAMPLES:**



TRUSS TYPES I-A, II-A, & III-A



TRUSS TYPES II-A & III-A

**SPLICING FLANGES**  
ASTM B221, Alloy 6061-T6  
or ASTM B209, Alloy 6061-T651  
\*To fit O.D. of Chord with maximum gap of 1/16".

OS4-A-2

6-1-12

|   |                       |                  |                 |
|---|-----------------------|------------------|-----------------|
| FILE NAME * P:\VISION STRUCTURES\SignRepl.dgn | USER NAME * posadoada | DESIGNED - _____ | REVISED - _____ |
| PLOT SCALE * 100.0002 ft / in.                | CHECKED - _____       | REVISED - _____  | REVISED - _____ |
| PLOT DATE * Aug-27-2013 11:54:28AM            | DATE - _____          | REVISED - _____  | REVISED - _____ |

**STATE OF ILLINOIS  
DEPARTMENT OF TRANSPORTATION**

|  |                             |            |               |                 |                    |                 |
|--|-----------------------------|------------|---------------|-----------------|--------------------|-----------------|
| <b>OVERHEAD SIGN STRUCTURES - ALUMINUM TRUSS DETAILS</b> |                             | F.A. _____ | SECTION _____ | COUNTY _____    | TOTAL SHEETS _____ | SHEET NO. _____ |
| <b>FOR TRUSS TYPES I-A, II-A AND III-A</b>               |                             | RTE. _____ | DISIBIGI_6    | VARIABLES _____ | 30                 | 8               |
| SCALE: _____   | SHEET _____ OF _____ SHEETS | STA. _____ | TO STA. _____ |                 | CONTRACT NO. 45305 |                 |
| [ILLINOIS] FED. AID PROJECT                              |                             |            |               |                 |                    |                 |