

STATE OF ILLINOIS
DEPARTMENT OF TRANSPORTATION

SOUTH CURB LINE

Location	Station	Offset	Theoretical Grade Elevations
Bk. E. Abutment	13143.73	18.475	411.764
A	13153.68	18.568	411.711
B	13163.62	18.690	411.658
End E. Appr. Slab	13173.57	18.841	411.606

SOUTH EDGE OF PAVEMENT

Location	Station	Offset	Theoretical Grade Elevations
Bk. E. Abutment	13143.78	12.059	411.513
A	13153.75	12.152	411.473
B	13163.71	12.274	411.432
End E. Appr. Slab	13173.67	12.425	411.393

☉ PAVEMENT

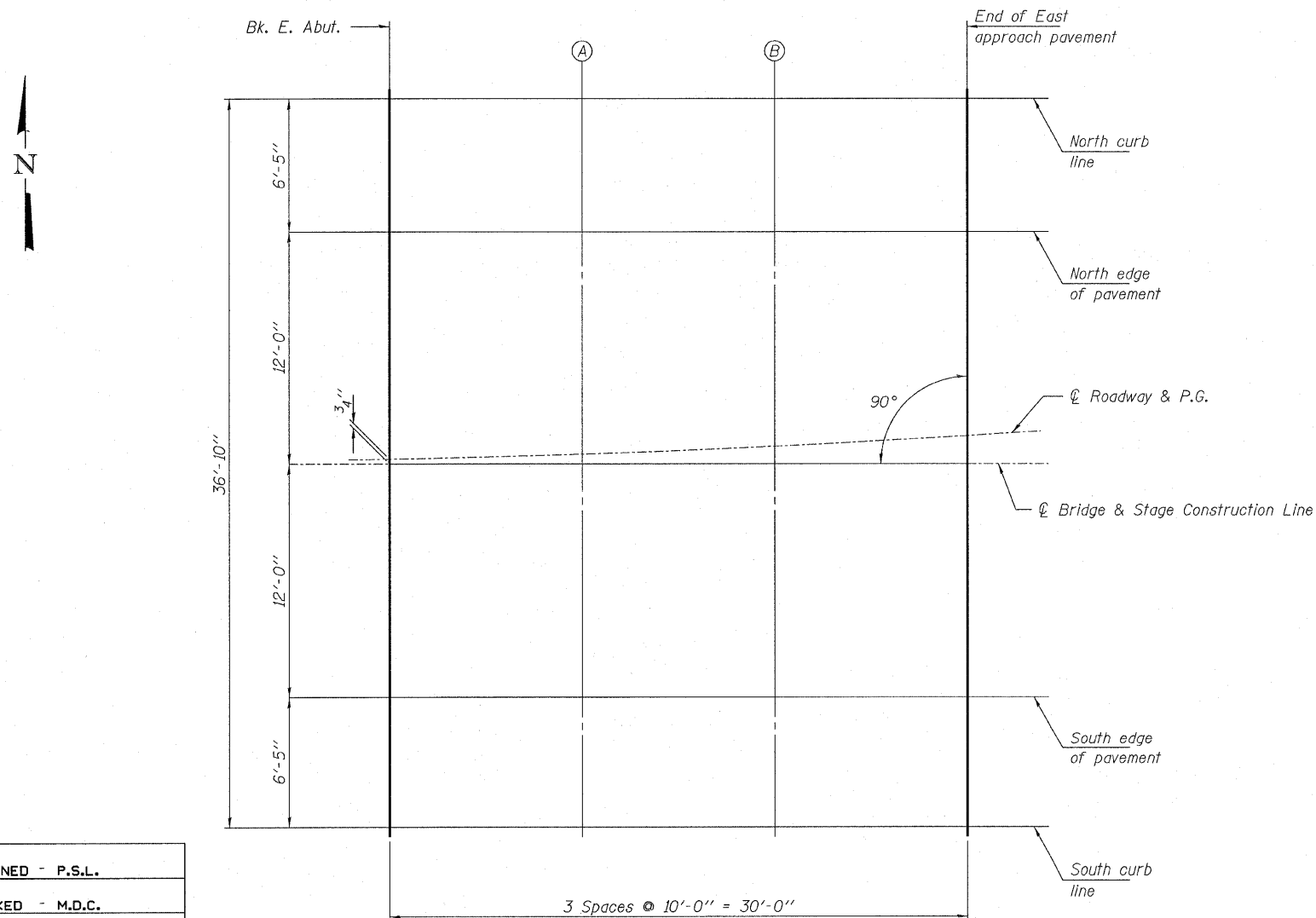
Location	Station	Offset	Theoretical Grade Elevations
Bk. E. Abutment	13143.87	0.059	411.045
A	13153.87	0.153	411.028
B	13163.87	0.275	411.011
End E. Appr. Slab	13173.87	0.426	410.994

NORTH EDGE OF PAVEMENT

Location	Station	Offset	Theoretical Grade Elevations
Bk. E. Abutment	13143.97	-11.941	410.577
A	13154.00	-11.846	410.583
B	13164.04	-11.724	410.589
End E. Appr. Slab	13174.07	-11.572	410.596

NORTH CURB LINE

Location	Station	Offset	Theoretical Grade Elevations
Bk. E. Abutment	13144.02	-18.357	410.327
A	13154.07	-18.263	410.346
B	13164.13	-18.140	410.365
End E. Appr. Slab	13174.18	-17.988	410.384



PLAN

TOP OF EAST APPROACH SLAB ELEVATIONS
STRUCTURE NO. 083-0063

DESIGNED - P.S.L.
CHECKED - M.D.C.
DRAWN - D.T.M.
CHECKED - S.W.M.

E-AS

9-3-07

HAMPTON, LENZINI & RENWICK, INC.
CIVIL & STRUCTURAL ENGINEERS
LAND SURVEYORS

HLR 3085 STEVENSON DRIVE, SUITE 201
SPRINGFIELD, ILLINOIS 62703
(217) 546-3400

PROJECT NUMBER: 08.0045.130 DATE: 09/02/08

SHEET NO. 8

19 SHEETS

F.A.S. RTE.	SECTION	COUNTY	TOTAL SHEETS	SHEET NO.
2881	30B-1	SALINE	45	22
RALEIGH RD. OVER ELDORADO RESERVOIR SPILLWAY			CONTRACT NO. 98533	
FED. ROAD DIST. NO. 9 ILLINOIS FED. AID PROJECT				