

F.A.S. RTE.	SECTION	COUNTY	TOTAL SHEETS	SHEET NO.
2881	30B-1	SALINE	45	1
FED. ROAD DIST. NO. 9	ILLINOIS	CONTRACT NO. 98533		

45-4-49

STATE OF ILLINOIS
DEPARTMENT OF TRANSPORTATION
DIVISION OF HIGHWAYS

**PROPOSED
HIGHWAY PLANS**

F.A.S. ROUTE 2881 (RALEIGH ROAD)
SECTION 30B-1
PROJECT: BRS-2881(101)
SALINE COUNTY
C-99-044-01

STRUCTURE REPLACEMENT OVER
ELDORADO RESERVOIR SPILLWAY

D-99-029-98



LOCATION OF SECTION INDICATED THUS: —■—

INDEX OF SHEETS

SHEET NO.	DESCRIPTION
1.	COVER SHEET
2.	GENERAL NOTES AND STANDARDS
3.-4.	SUMMARY OF QUANTITIES
5.-7.	SCHEDULES OF QUANTITIES
8.	TYPICAL CROSS SECTIONS
9.	PLAN AND PROFILE
10.	MISCELLANEOUS DETAILS
11.	STAGE I CONSTRUCTION
12.	STAGE II CONSTRUCTION
13.	EROSION CONTROL PLAN
14.	PAVEMENT MARKINGS
15.-32.	STRUCTURE PLANS
33.	BORING PLANS
33A.-33D	BRIDGE APPROACH PAVT. DETAILS
34.-39.	STAGE I CROSS SECTIONS
40.-45.	STAGE II CROSS SECTIONS

UTILITIES

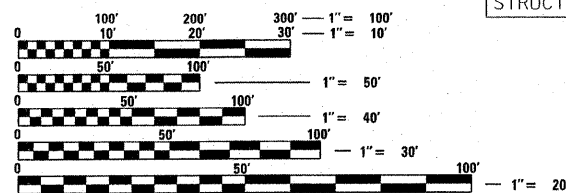
VERIZON NORTH
214 WEST MONROE
CARBONDALE, IL 62901

ATMOS ENERGY
P.O. BOX 424
HARRISBURG, IL 62946

AMEREN CIPS
1800 WEST MAIN
MARION, IL 62959

**DESIGN DESIGNATION
N.A.**

FUNCTIONAL CLASSIFICATION:	MINOR COLLECTOR (RURAL)
DESIGN SPEED:	55 MPH
POSTED SPEED:	55 MPH
ADT:	3400 (2005)
PV:	94.1%
TRUCKS:	5.9%



FULL SIZE PLANS HAVE BEEN PREPARED USING STANDARD ENGINEERING SCALES. REDUCED SIZED PLANS WILL NOT CONFORM TO STANDARD SCALES. IN MAKING MEASUREMENTS ON REDUCED PLANS, THE ABOVE SCALES MAY BE USED.

J.U.L.I.E.
JOINT UTILITY LOCATION INFORMATION FOR EXCAVATION
1-800-892-0123
OR 811

PROJECT ENGINEER
PROJECT MANAGER

CONTRACT NO. 98533

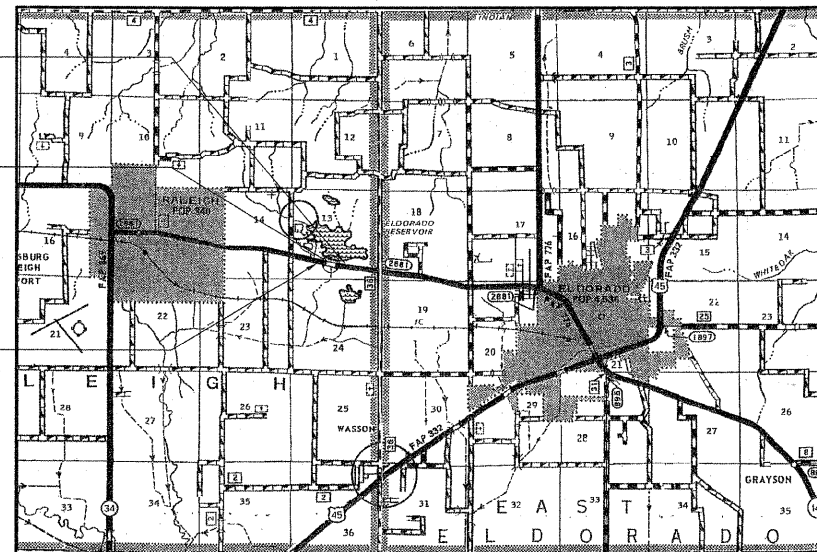
TOWNSHIP: RALEIGH

R. 6 E. R. 7 E.

IMPROVEMENT ENDS
STATION 134+60

STA. 131+16.00
WIDE FLANGE BEAM BRIDGE WITH
CONCRETE DECK ON SEMI-INTEGRAL
ABUTMENTS. SINGLE SPAN @ 52'-0"
36'-0" RDWY.; SKEW = 0°
STRUCTURE NO. 083-0063; SEC. 30B-1

IMPROVEMENT BEGINS
STATION 128+00



LOCATION MAPS

APPROXIMATE SCALE: 0 1 MILE

GROSS AND NET LENGTH OF SECTION	= 660.00 FT. = 0.125 MI.
NET ROADWAY LENGTH	= 605.92 FT. = 0.115 MI.
BRIDGE LENGTH SN 083-0063	= 54.08 FT. = 0.010 MI.

PROJECT ENGINEER: DAVID PICHE (618) 351-5227

STATE OF ILLINOIS
DEPARTMENT OF TRANSPORTATION
DIVISION OF HIGHWAYS

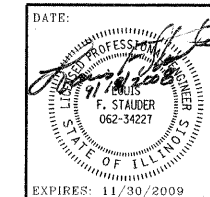
SUBMITTED Oct 14 20 08

Mary C. Lomic
DEPUTY DIRECTOR OF HIGHWAYS, REGION ENGINEER

December 5, 2008
Eric E. Harned
ENGINEER OF DESIGN AND ENVIRONMENT

December 5, 20 08
Christine M. Reed
DIRECTOR OF HIGHWAYS, CHIEF ENGINEER

PRINTED BY THE AUTHORITY
OF THE STATE OF ILLINOIS



HAMPTON, LENZINI & RENWICK, INC.
CIVIL & STRUCTURAL ENGINEERS
LAND SURVEYORS

3085 STEVENSON DRIVE, SUITE 201
SPRINGFIELD, ILLINOIS 62703
(217) 546-3400

ELGIN • SPRINGFIELD

EXPIRES: 11/30/2009

PROJECT NUMBER: 08.0045.130 DATE: 09/18/08